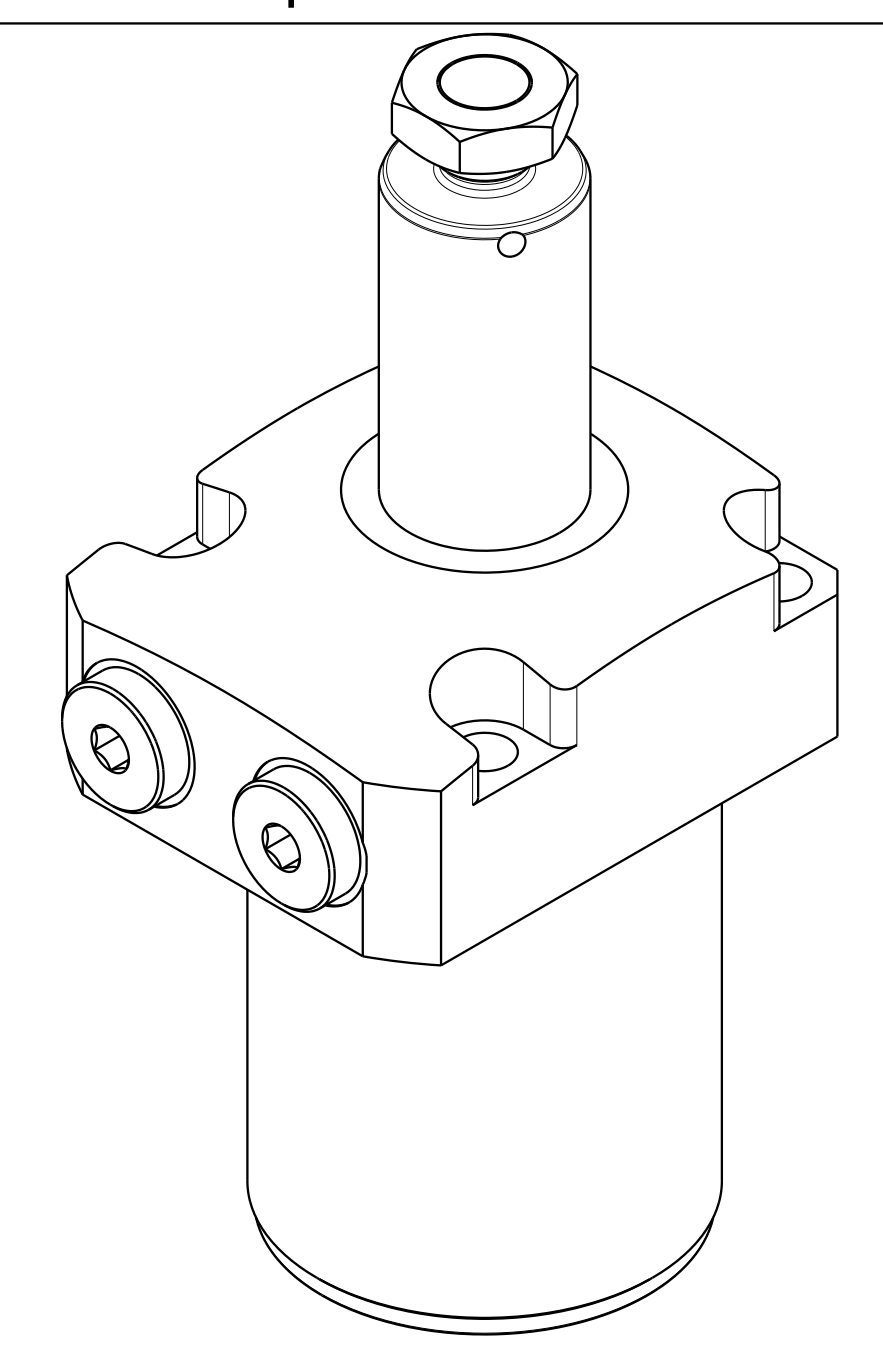
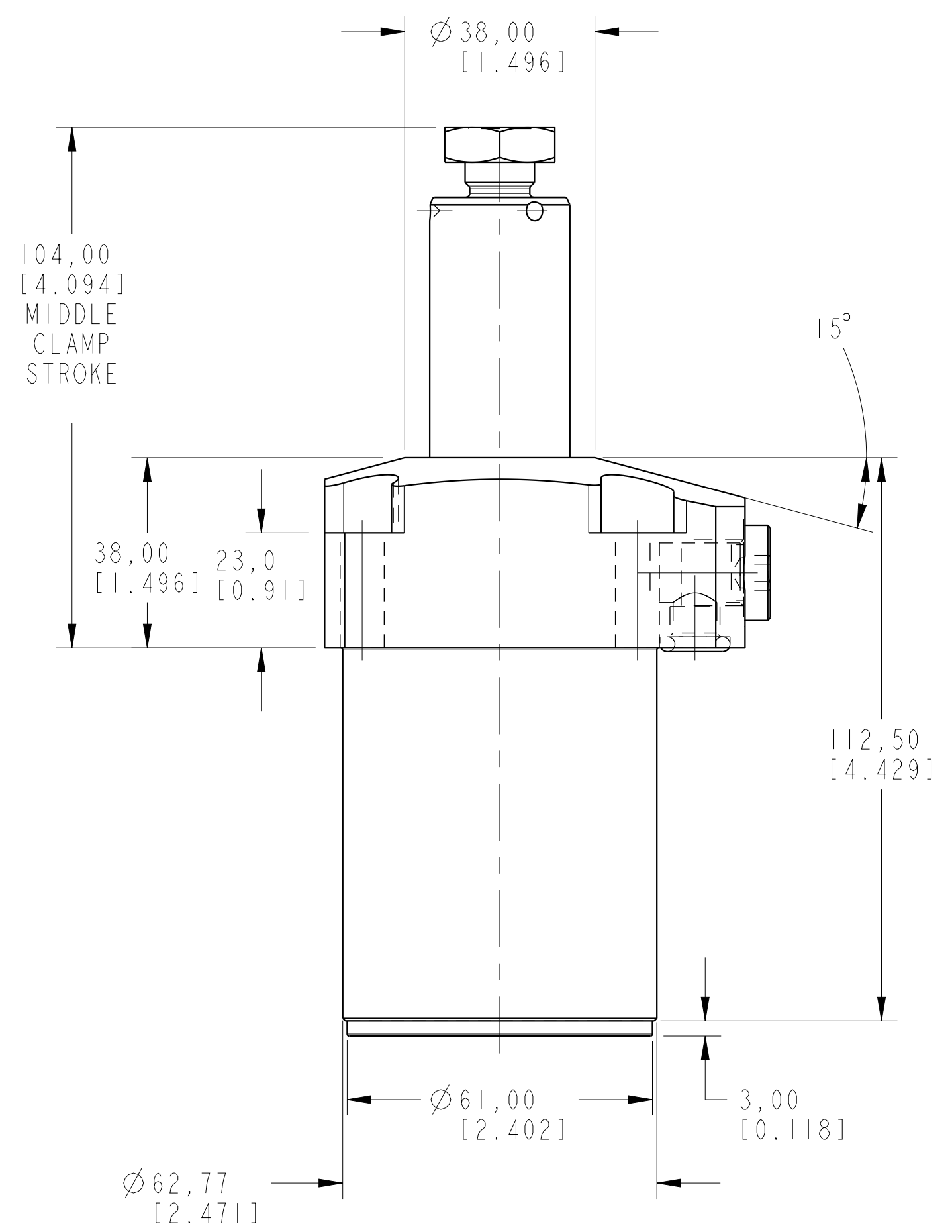
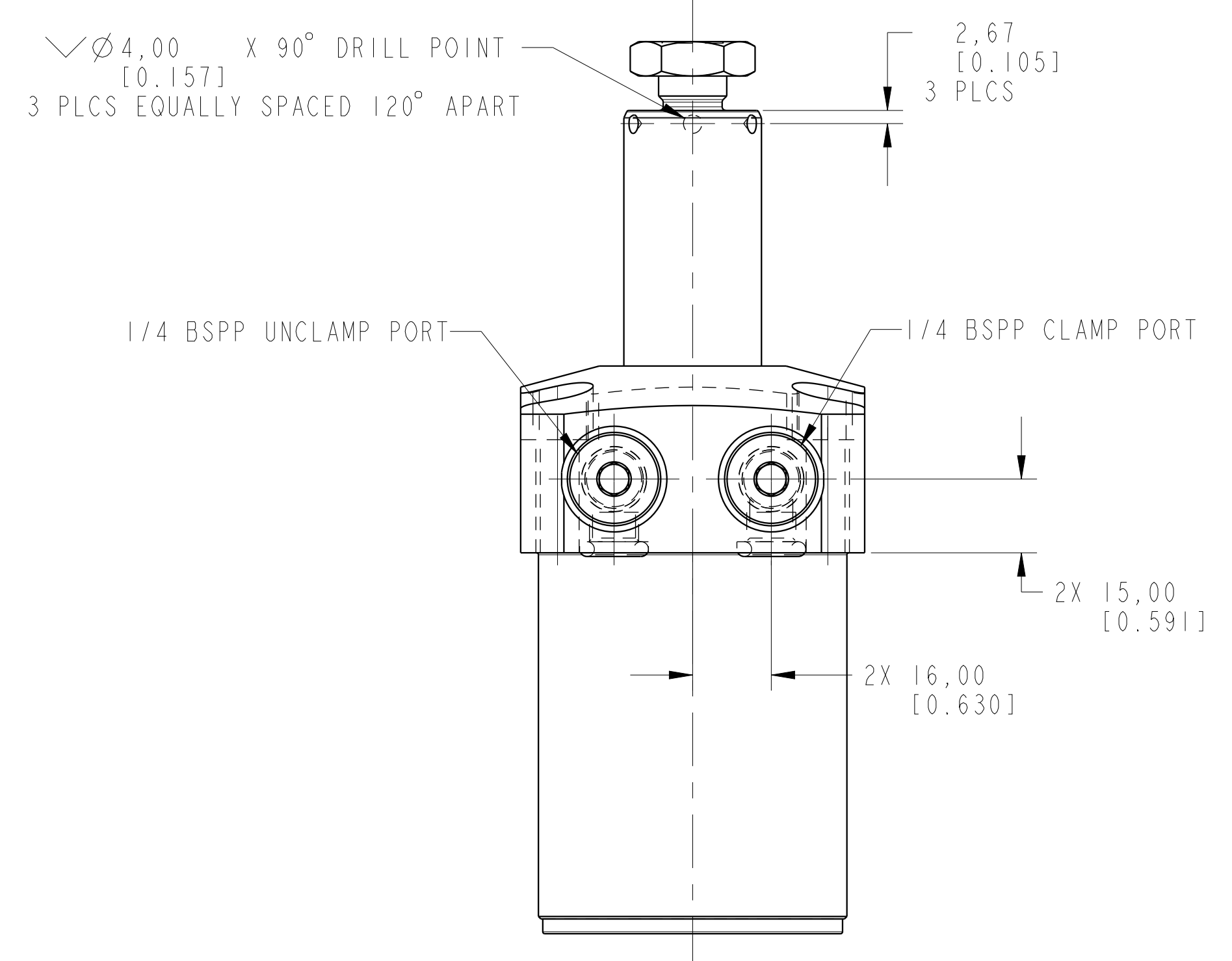
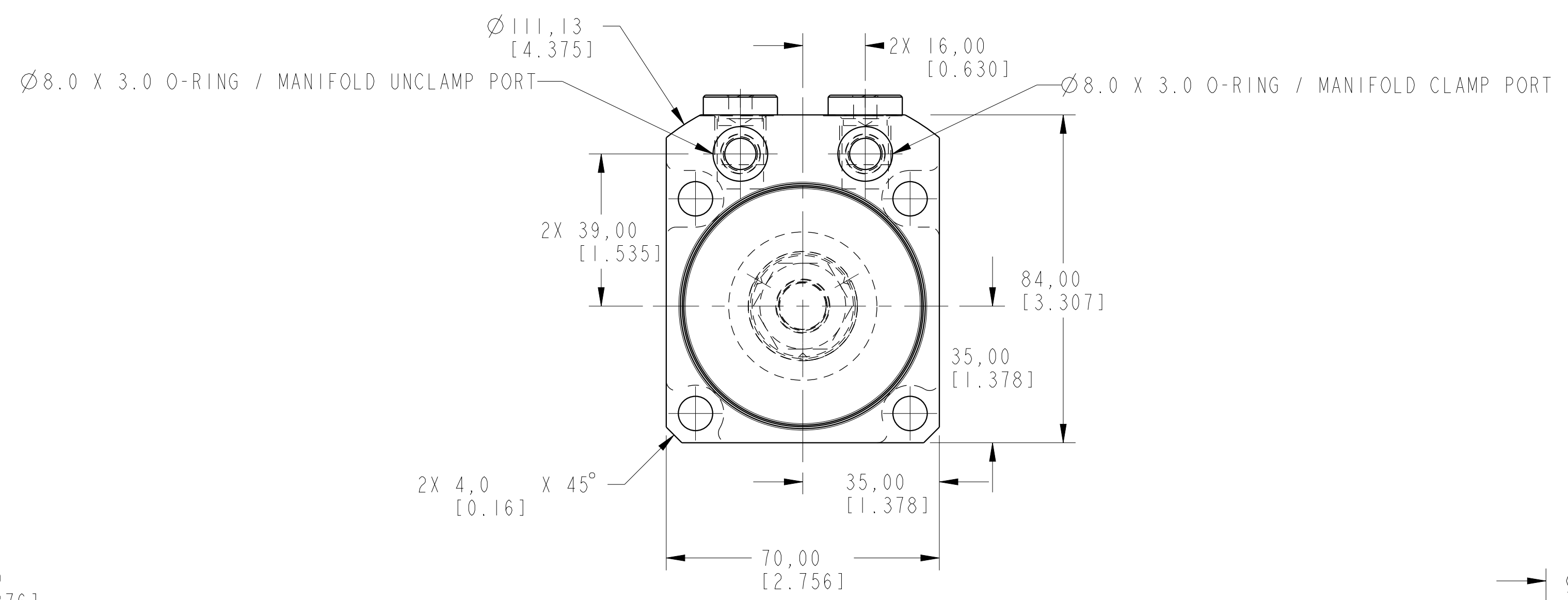
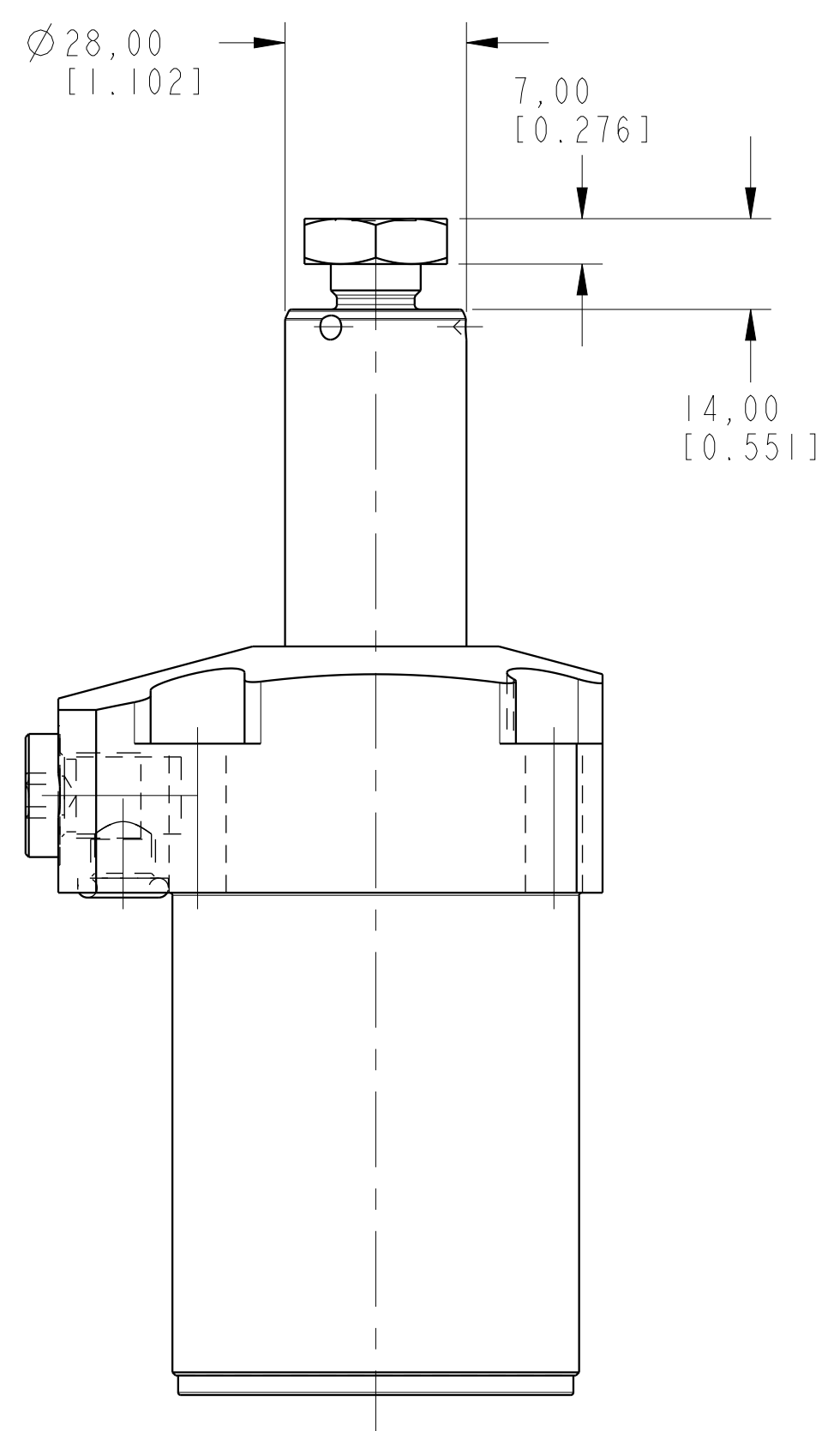


1

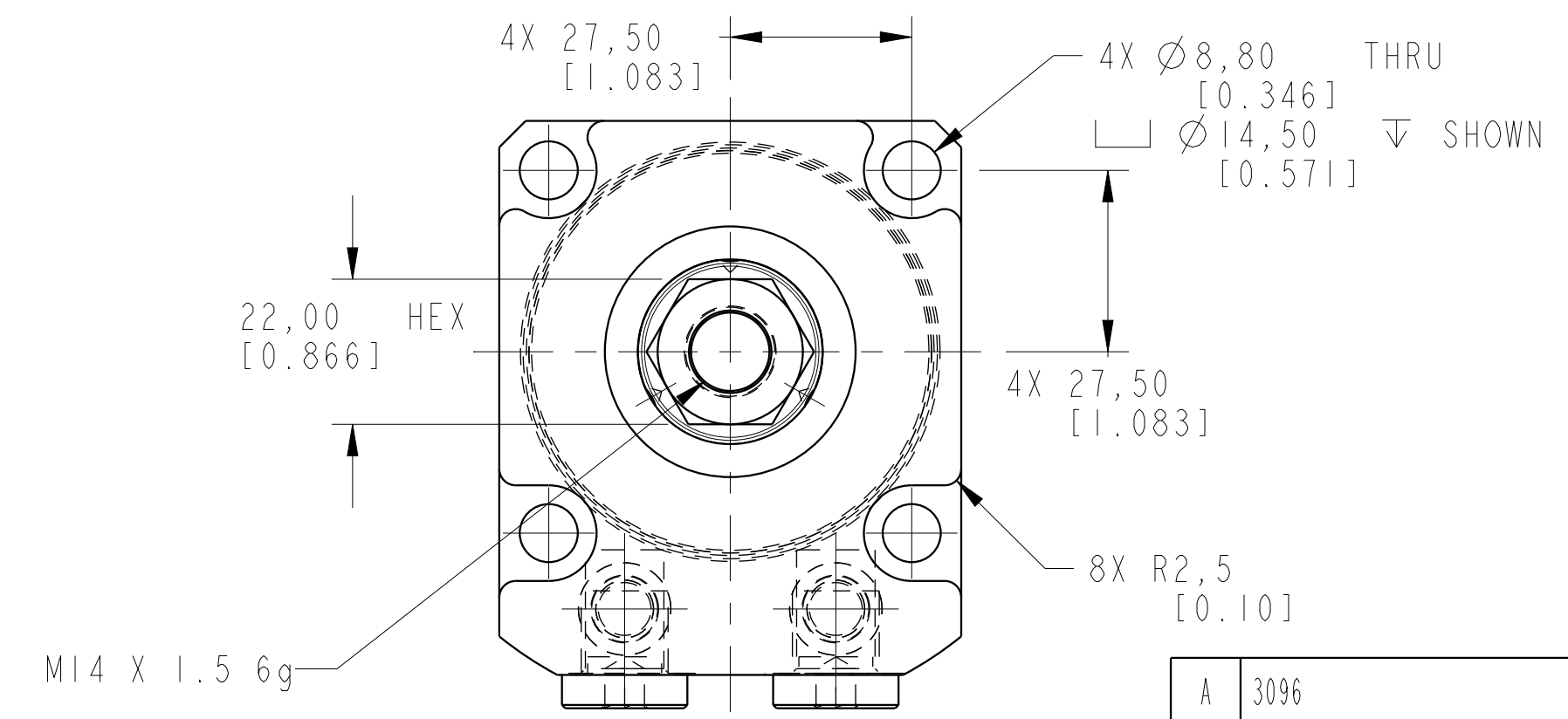
2

3

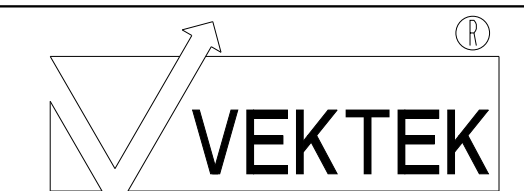
4



1LCML1405000S REV A ECN 3096



**CAD CONTROL DRAWING**



VEKTEK, INC.  
1334 E. SIXTH AVE. P.O. BOX 625  
EMPORIA, KS. 66801 U.S.A.

A	3096	RELEASE	MAJ	9/20/16
REV	IN ACCORDANCE WITH ECN	EFFECTIVE DATE	REVISED BY	DATE
DRW BY:	ALUTHI	DRAWING STATUS: <b>Released</b>		
DATE:	12-29-11	PRODUCTION APPROVED FOR RELEASED STATUS ONLY		

LI405000S	A	SC, TF, 7MPa, 50B, STR
REFERENCE MODEL	REF REV	*****
TOLERANCES DO NOT APPLY DIMENSIONS ARE NOMINAL	UNITS mm (inch)	SIZE D
		1LCML1405000S
		REV A

1

2

3

4