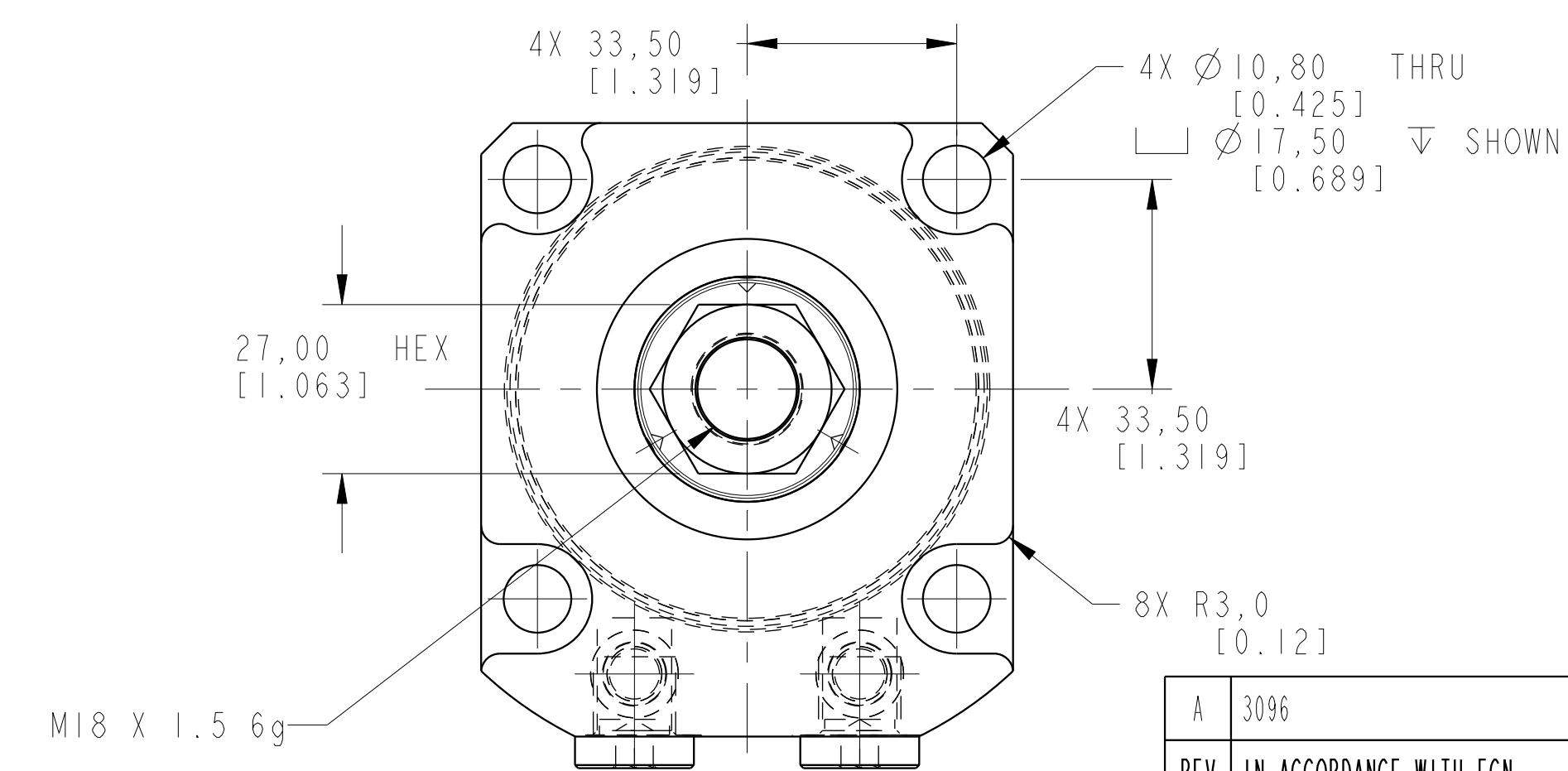


ILCML1406300S REV A ECN 3096



CAD CONTROL DRAWING



VEKTEK, INC.  
1334 E. SIXTH AVE. P.O. BOX 625  
EMPORIA, KS. 66801 U.S.A.

A	3096	RELEASE	MAJ	9/20/16
REV	IN ACCORDANCE WITH ECN	EFFECTIVE DATE	REVISED BY	DATE
DRW BY:	ALUTHI	DRAWING STATUS: <b>Released</b>		
DATE:	12-29-11	PRODUCTION APPROVED FOR RELEASED STATUS ONLY		

LI406300S	A	SC, TF, 7MPa, 63B, STR
TOLERANCES DO NOT APPLY DIMENSIONS ARE NOMINAL	UNITS mm (inch)	SIZE D
ILCML1406300S	REV A	FORM FEG036, Rev. C