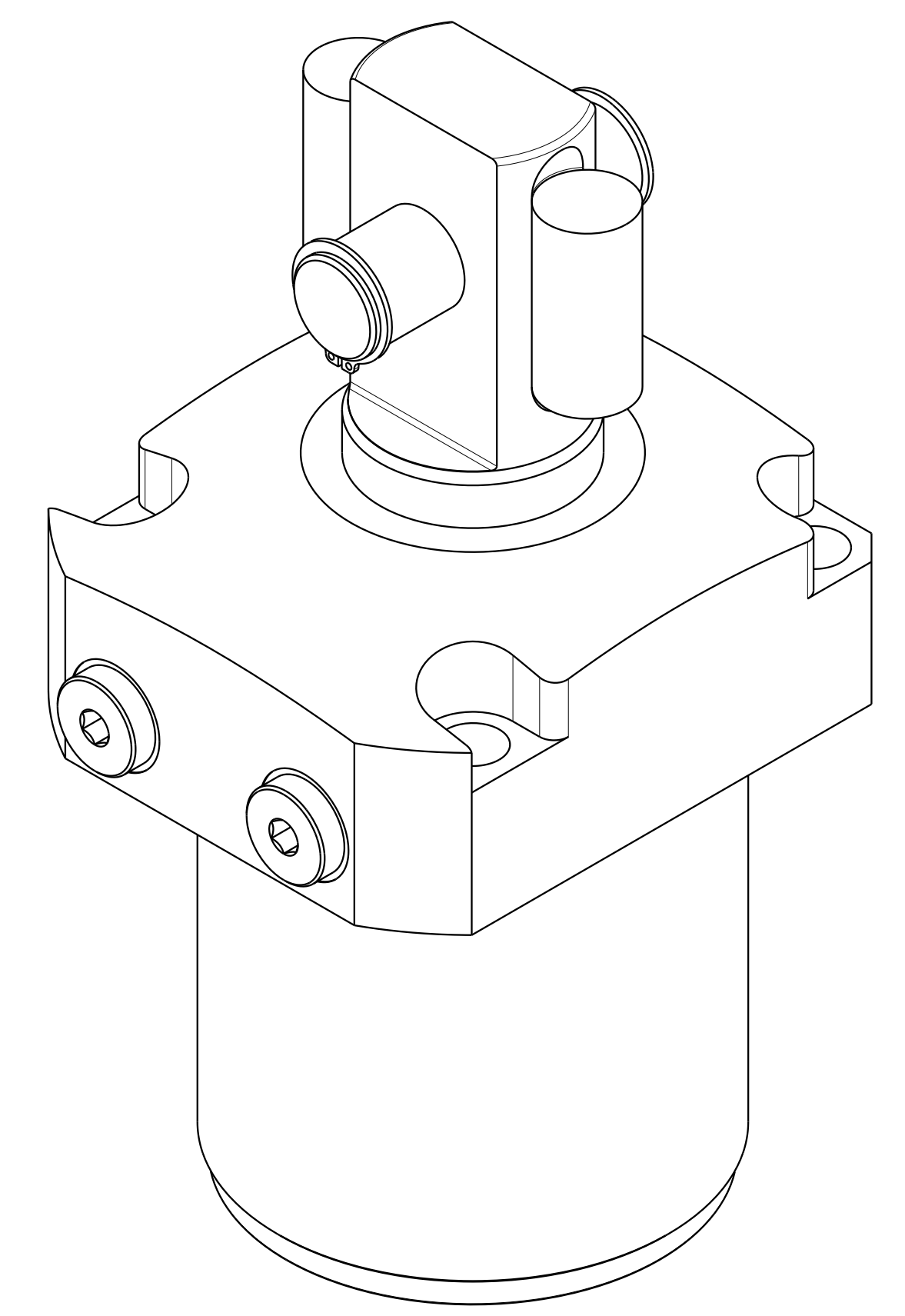
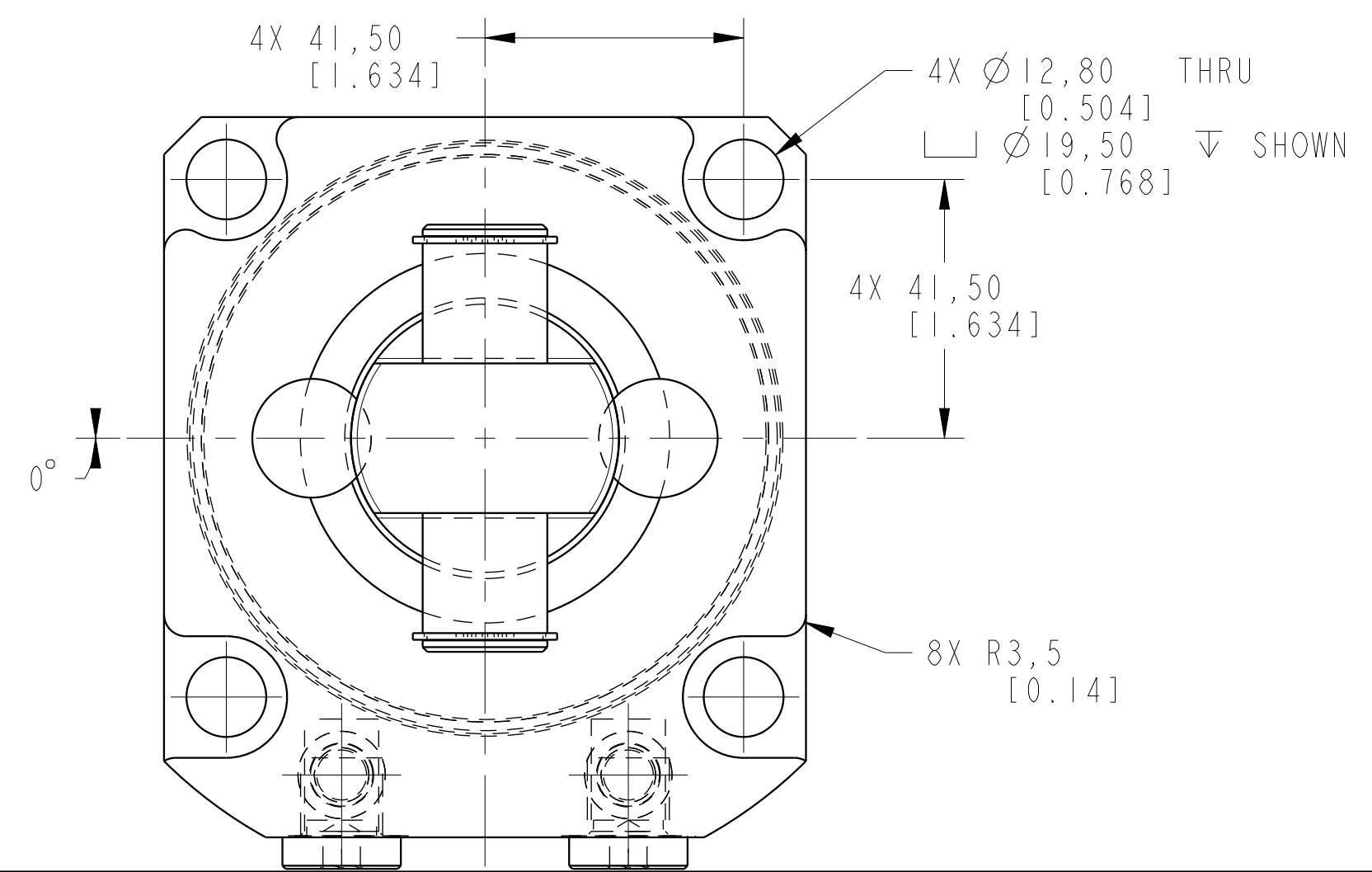
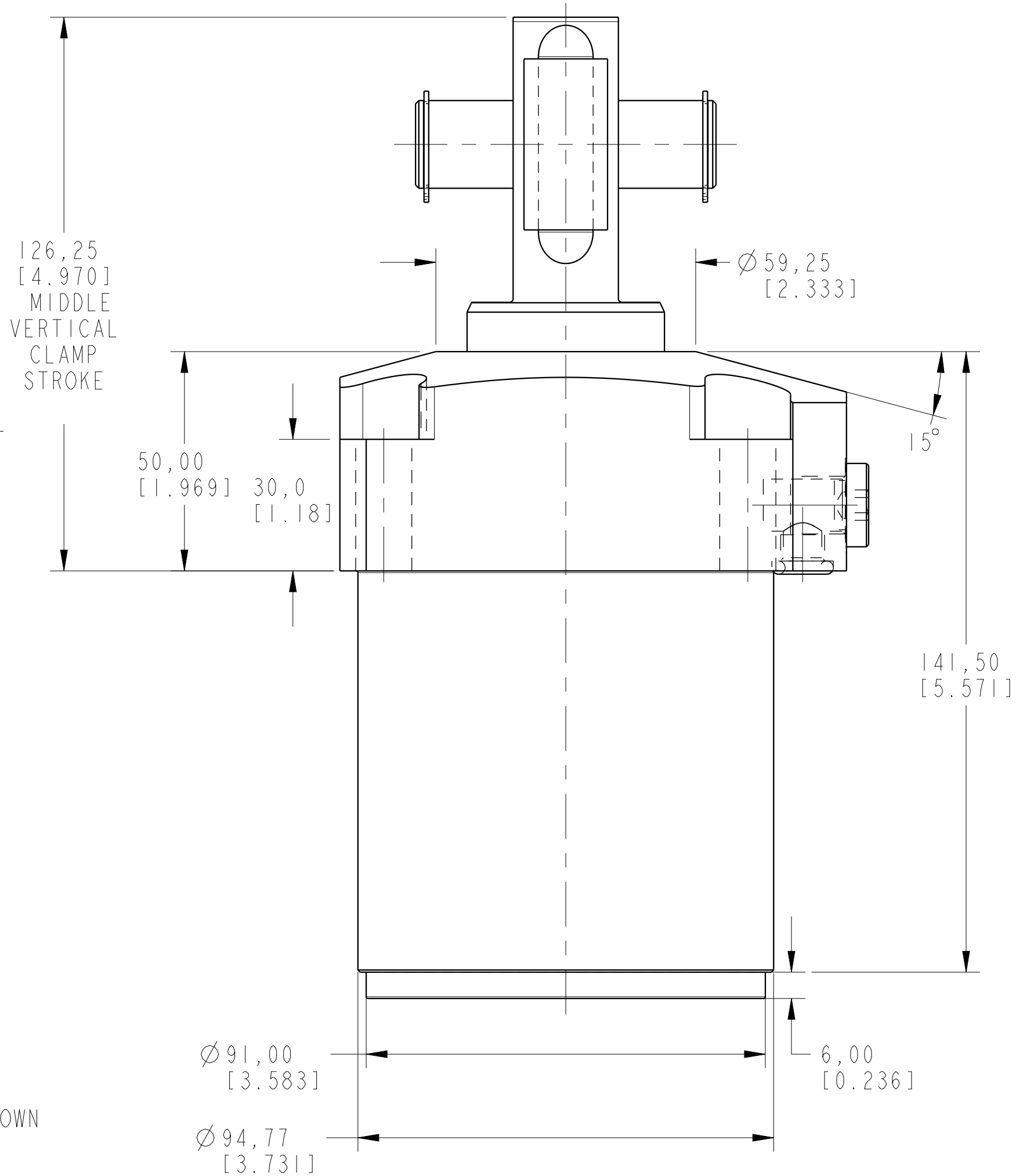
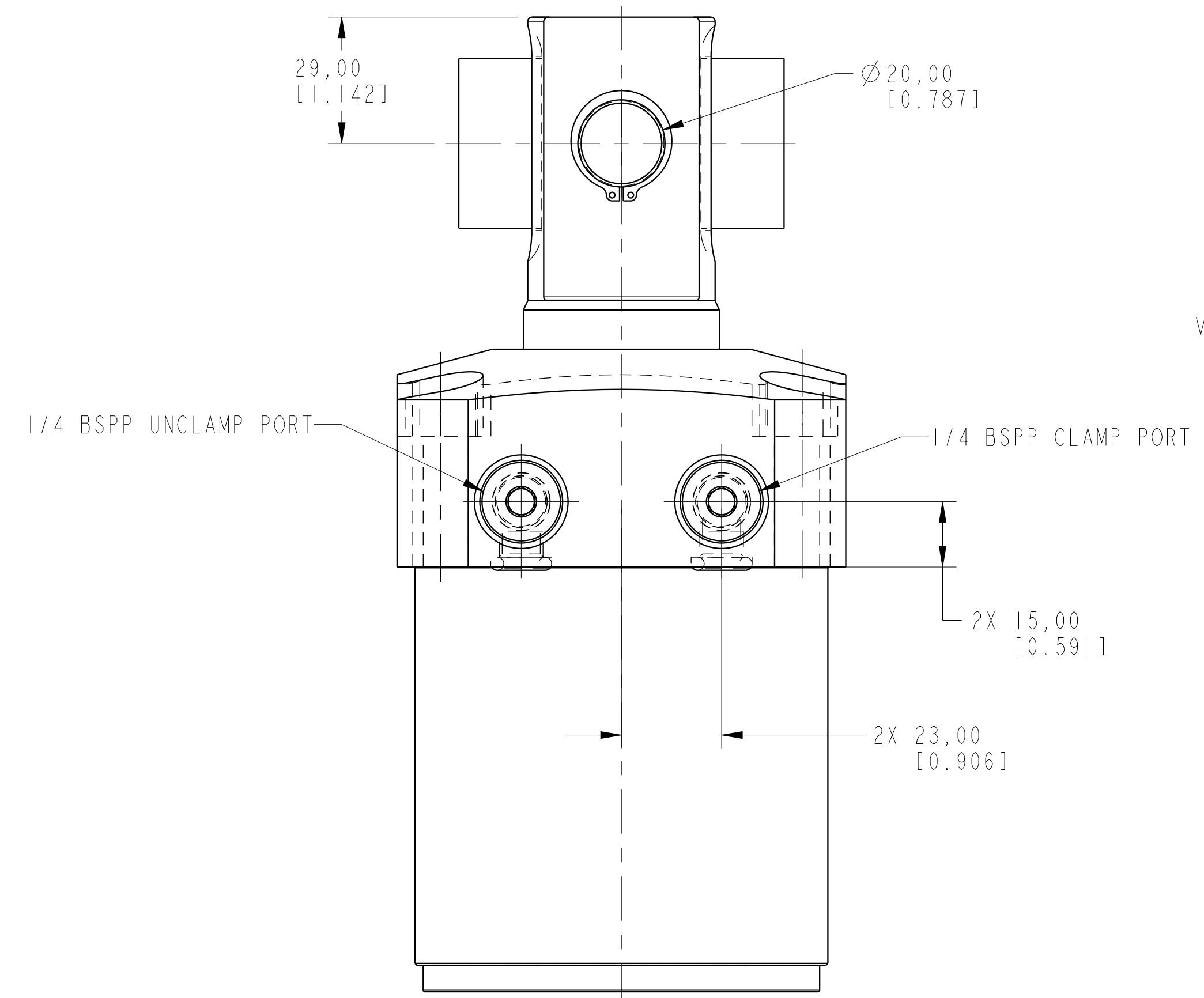
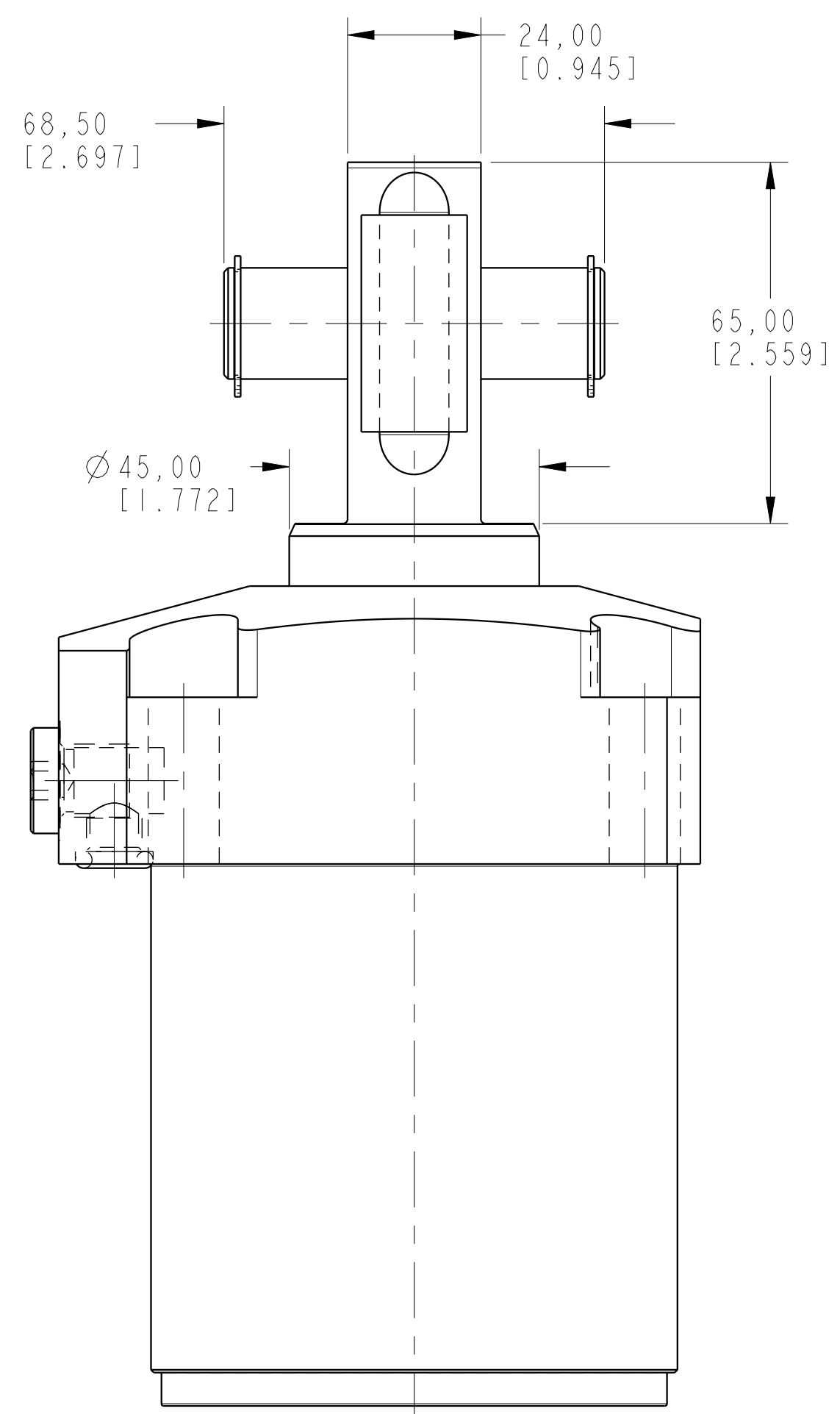
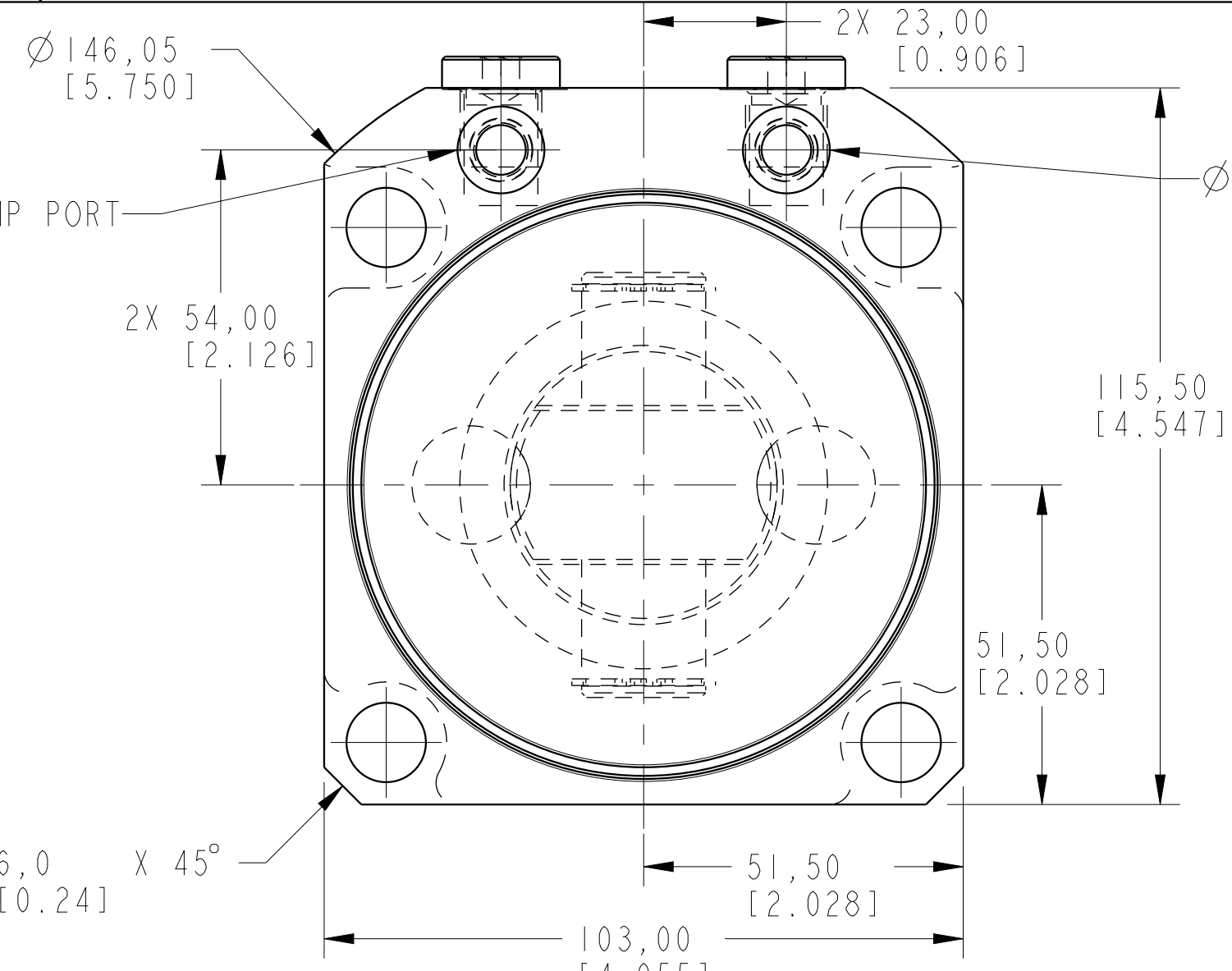


Ø8.0 X 3.0 O-RING / MANIFOLD UNCLAMP PORT

Ø8.0 X 3.0 O-RING / MANIFOLD CLAMP PORT



ILCML1408010L0 REV A ECN 2714

CAD CONTROL DRAWING



A	2714	RELEASE	MAJ	3-25-15
REV	IN ACCORDANCE WITH ECN	EFFECTIVE DATE	REVISED BY	DATE
DRW BY:	ALUTHI	DRAWING STATUS: Released		
DATE:	8-13-14	PRODUCTION APPROVED FOR RELEASED STATUS ONLY		

+	Ø
LI-4080-10-L-0	A
REFERENCE MODEL	REF REV
TOLERANCES DO NOT APPLY	SIZE
DIMENSIONS ARE NOMINAL	D

SC, TF, 7MPa, 80B, LH, CLEVIS, 0	REV
ILCML1408010L0	A
FORM FEG036, Rev. B	