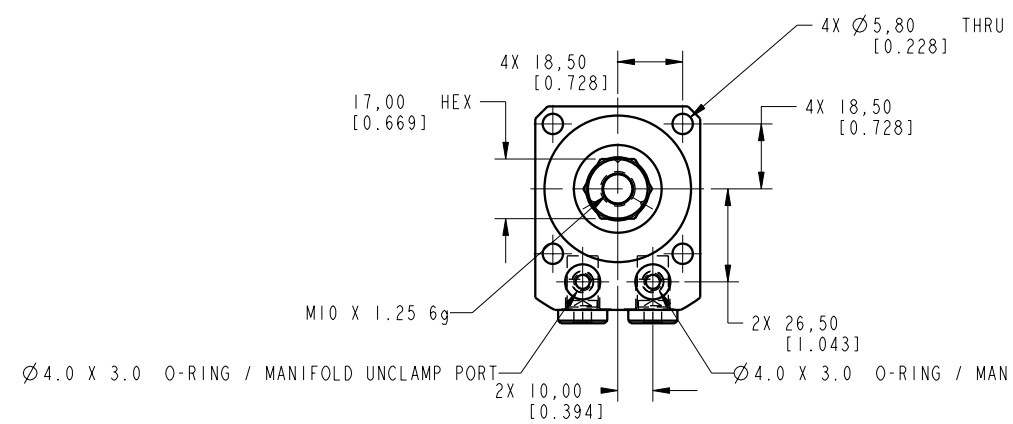
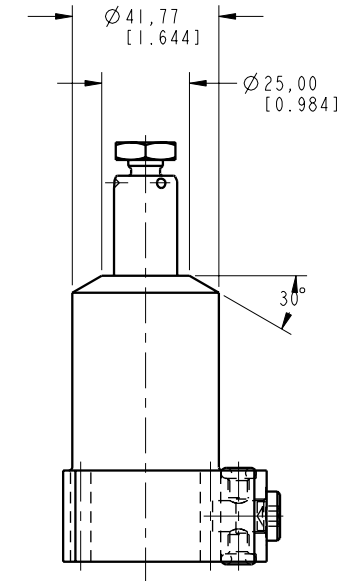
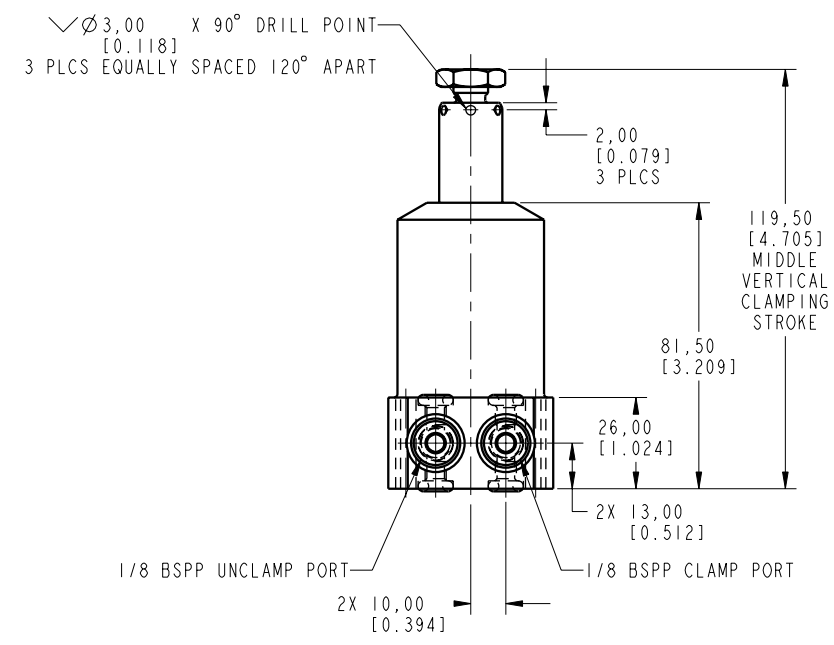
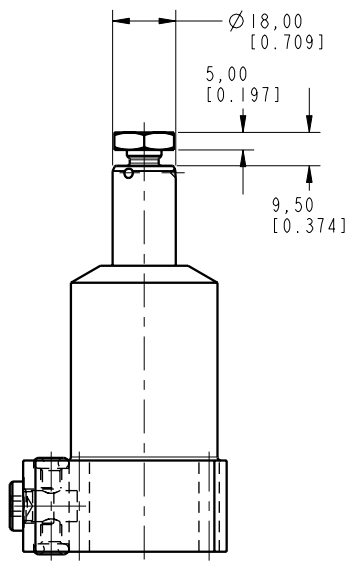


ILCML1413200L REV A ECN 2549



CAD CONTROL DRAWING



VEKTEK, INC.  
1334 E. SIXTH AVE. P.O. BOX 625  
EMPORIA, KS. 66801 U.S.A.

A	2549	RELEASE	OMITCHELL	6-13-13	LI413200L	A	SC, BF, 7MPa, 32B, LH	
REV	IN ACCORDANCE WITH ECN	EFFECTIVE DATE	REVISED BY	DATE	REFERENCE MODEL	REF REV	*****	
DRW BY:	ALUTHI	DRAWING STATUS: <b>ECN</b>			TOLERANCES DO NOT APPLY	UNITS	SIZE	
DATE:	3-9-12	PRODUCTION APPROVED FOR RELEASED STATUS ONLY			DIMENSIONS ARE NOMINAL	mm [inch]	D	
							ILCML1413200L	REV A

FORM FE036, Rev. B