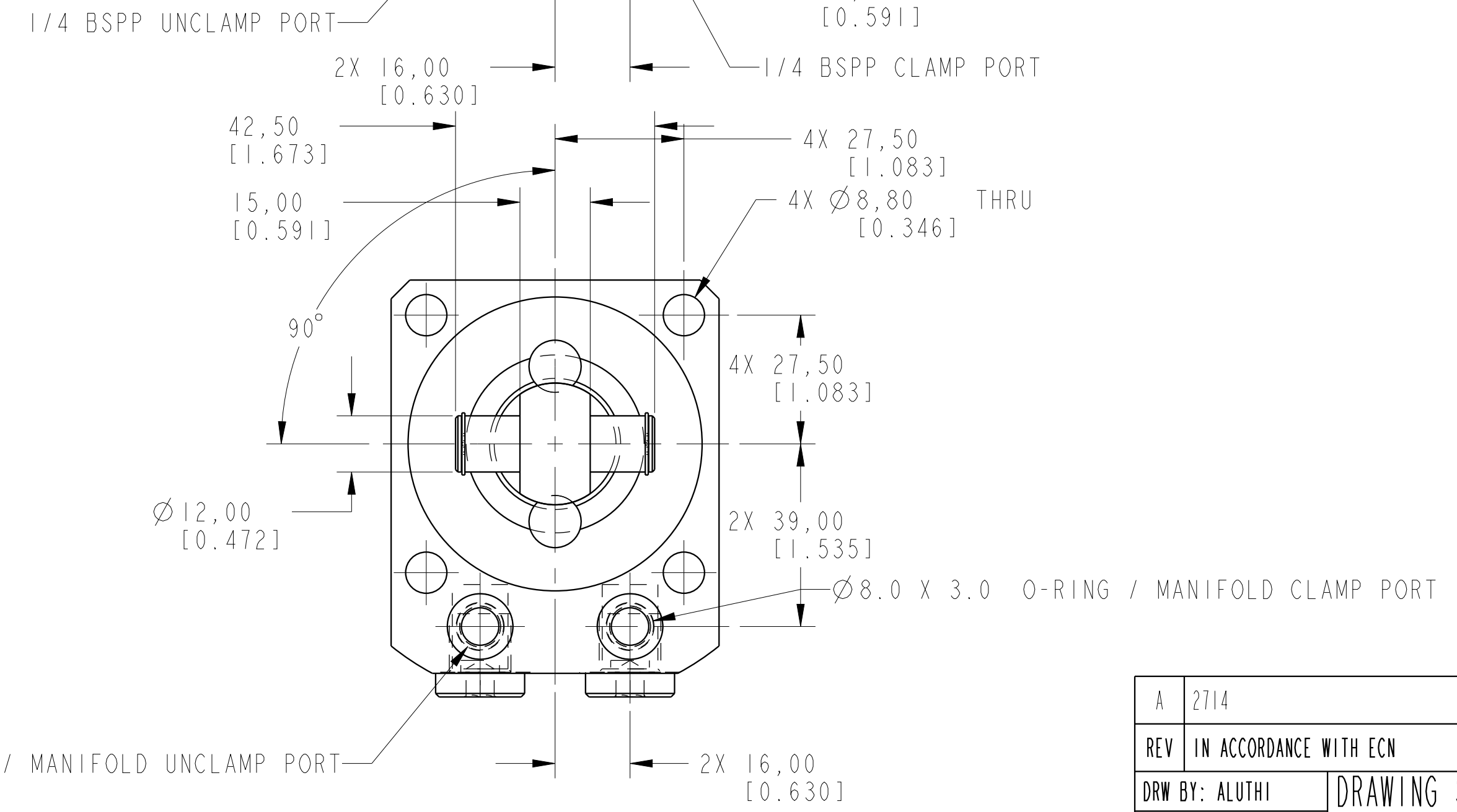
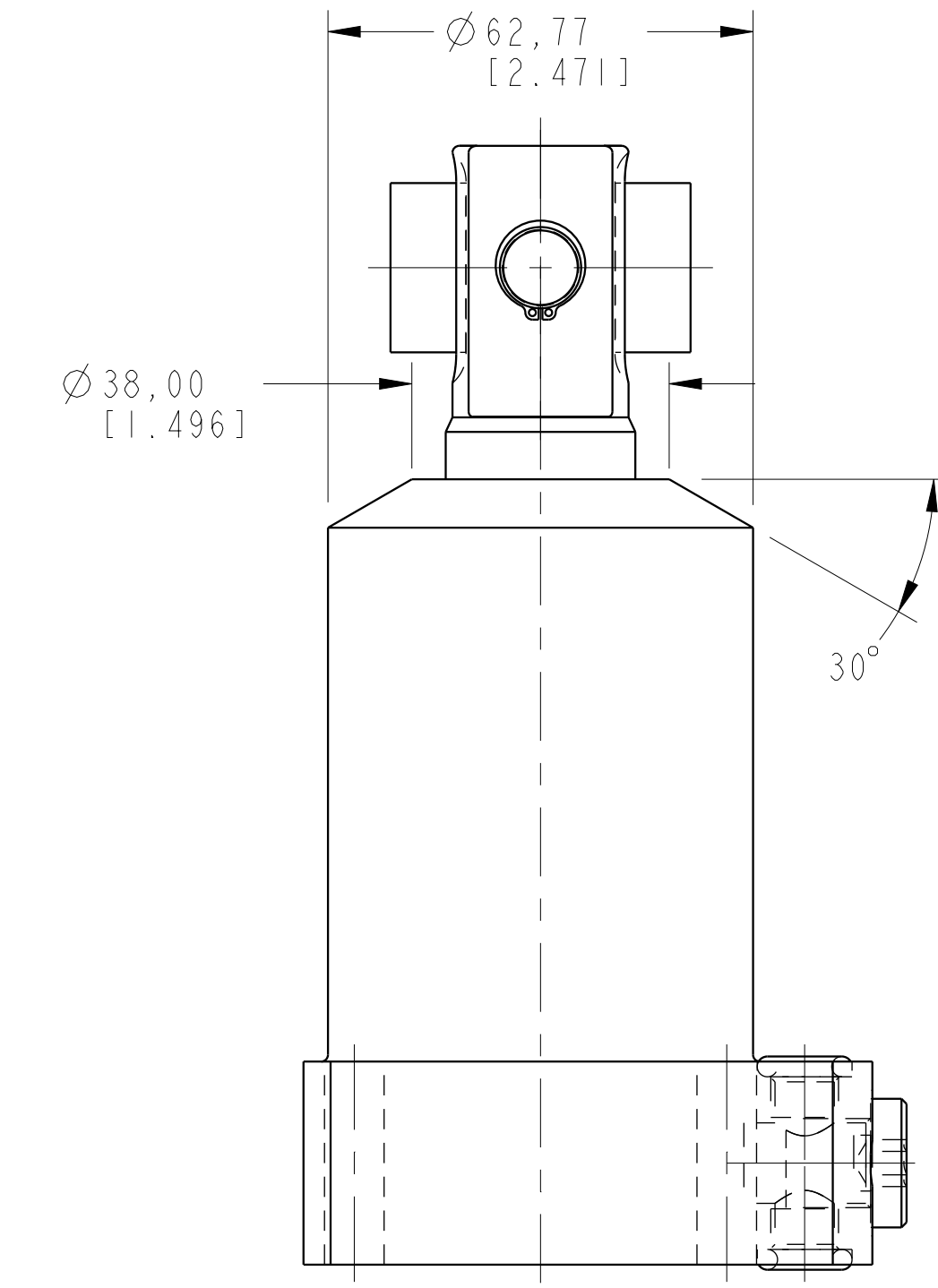
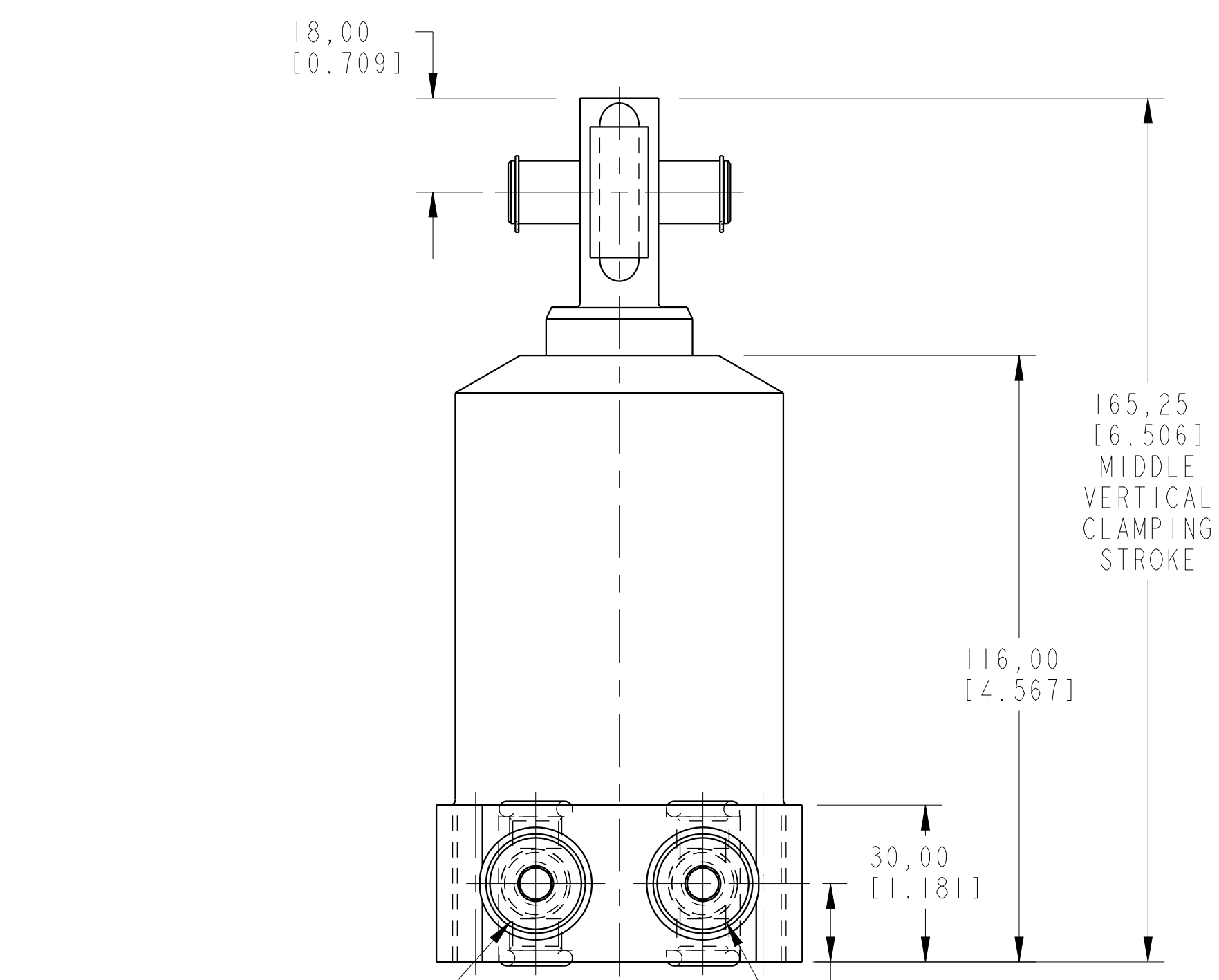
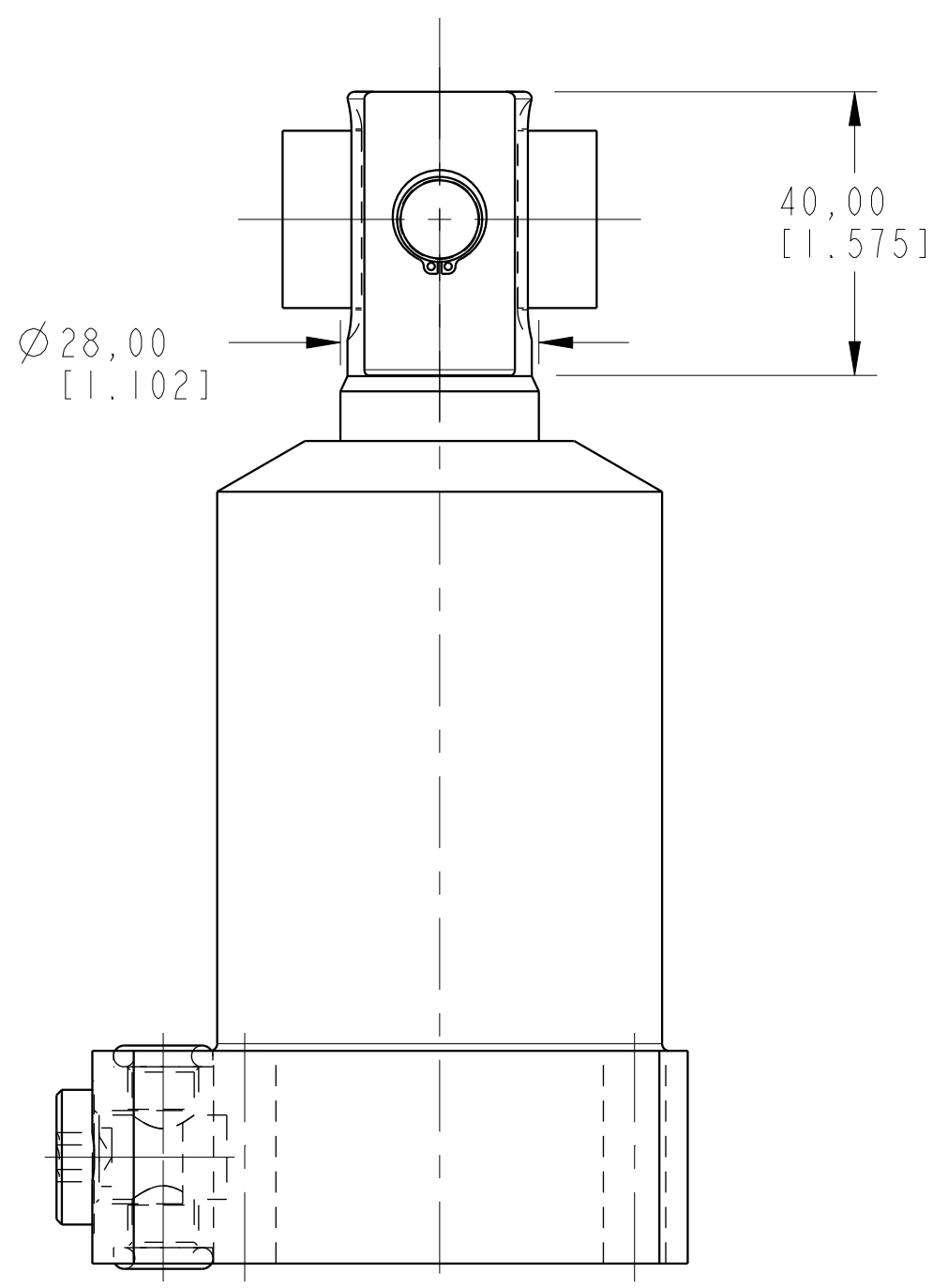


ILCML1415010L90 REV A ECN 2714



CAD CONTROL DRAWING



VEKTEK, INC.  
1334 E. SIXTH AVE. P.O. BOX 625  
EMPORIA, KS. 66801 U.S.A.

A	2714	RELEASE	MAJ	3-25-15
REV	IN ACCORDANCE WITH ECN	EFFECTIVE DATE	REVISED BY	DATE
DRW BY:	ALUTHI	DRAWING STATUS: <b>Released</b>		
DATE:	8-13-14	PRODUCTION APPROVED FOR RELEASED STATUS ONLY		

LI-4150-10-L-90	A	SC, BF, 7MPa, 50B, LH, CLEVIS, 90
REFERENCE MODEL	REF REV	*****
TOLERANCES DO NOT APPLY DIMENSIONS ARE NOMINAL	UNITS mm (inch)	SIZE D
		ILCML1415010L90 REV A