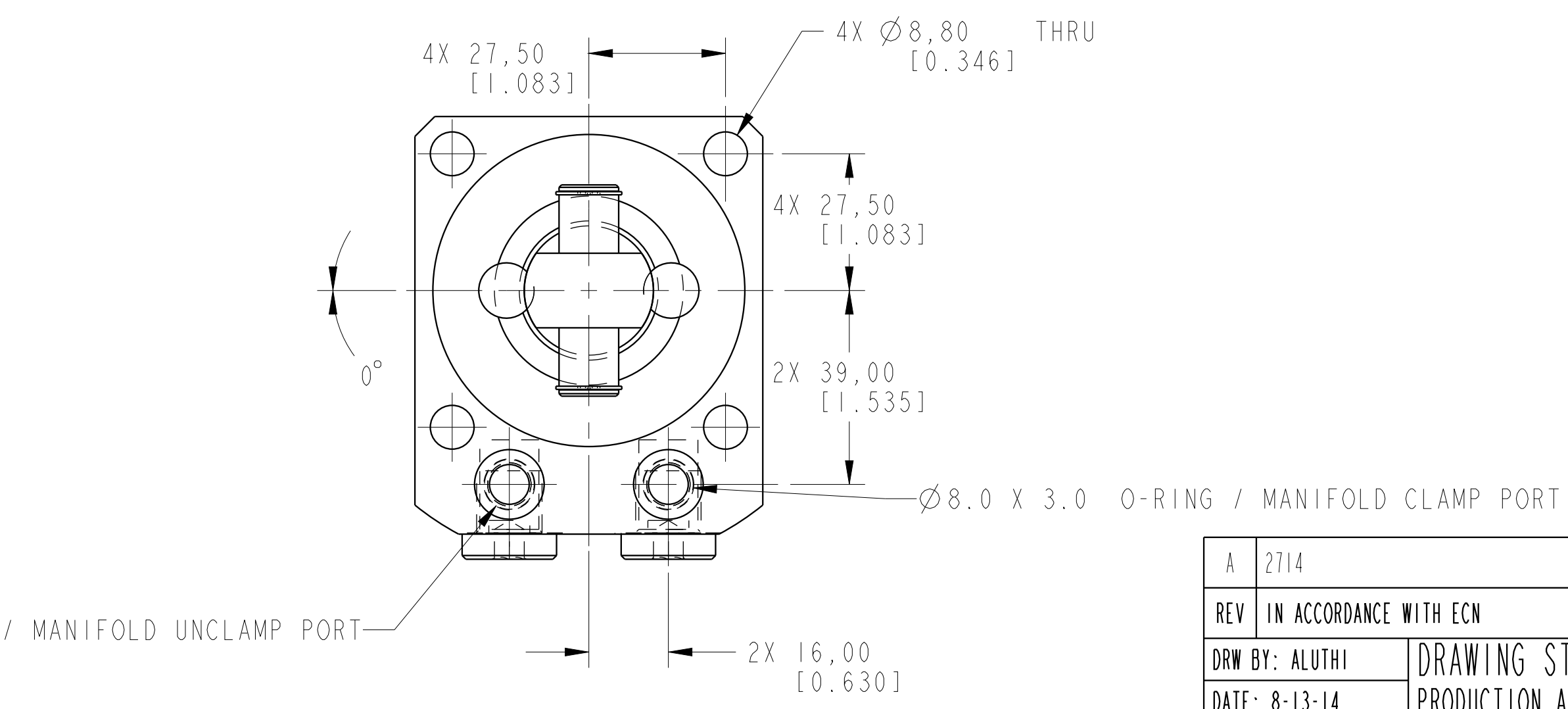
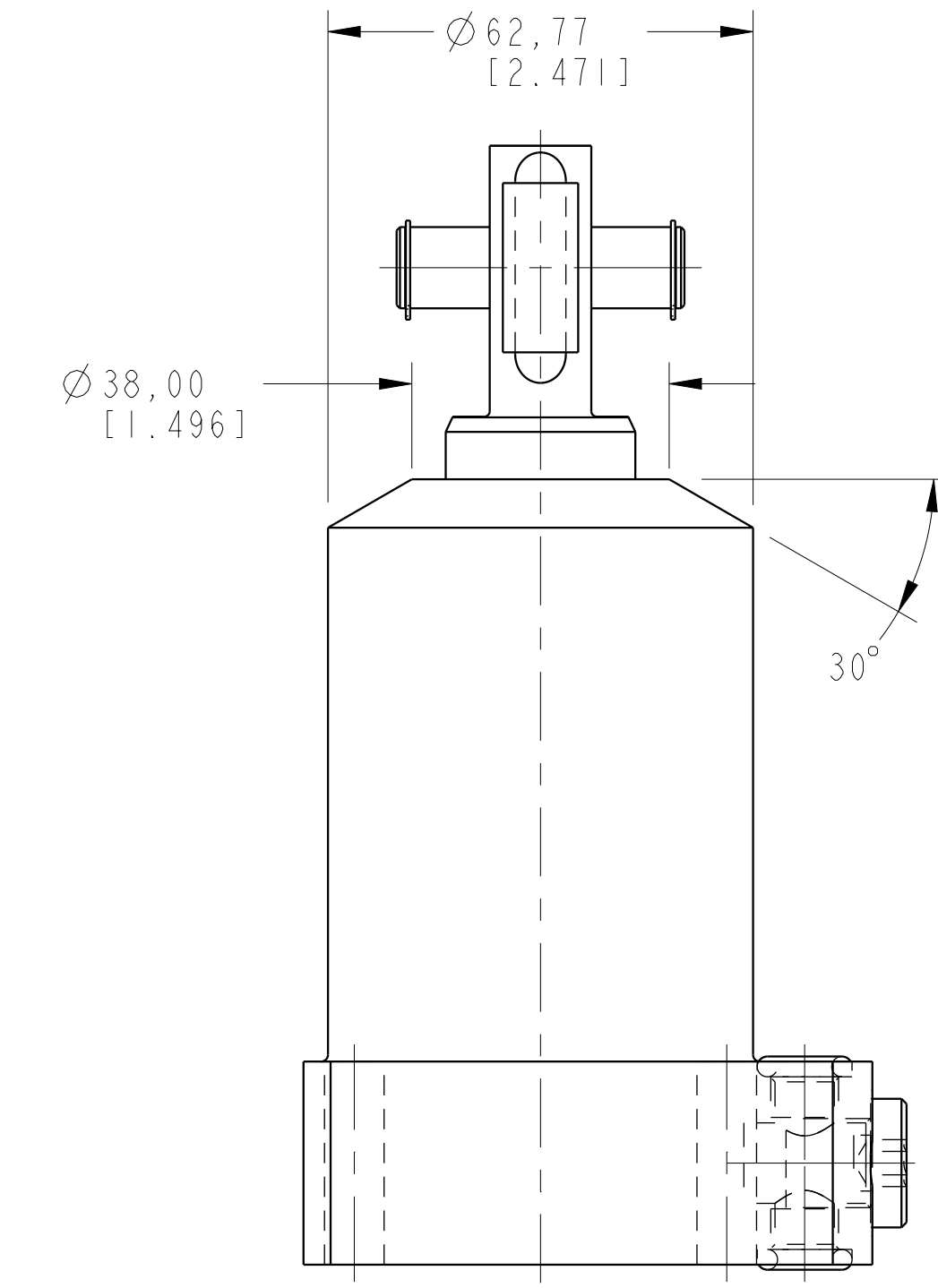
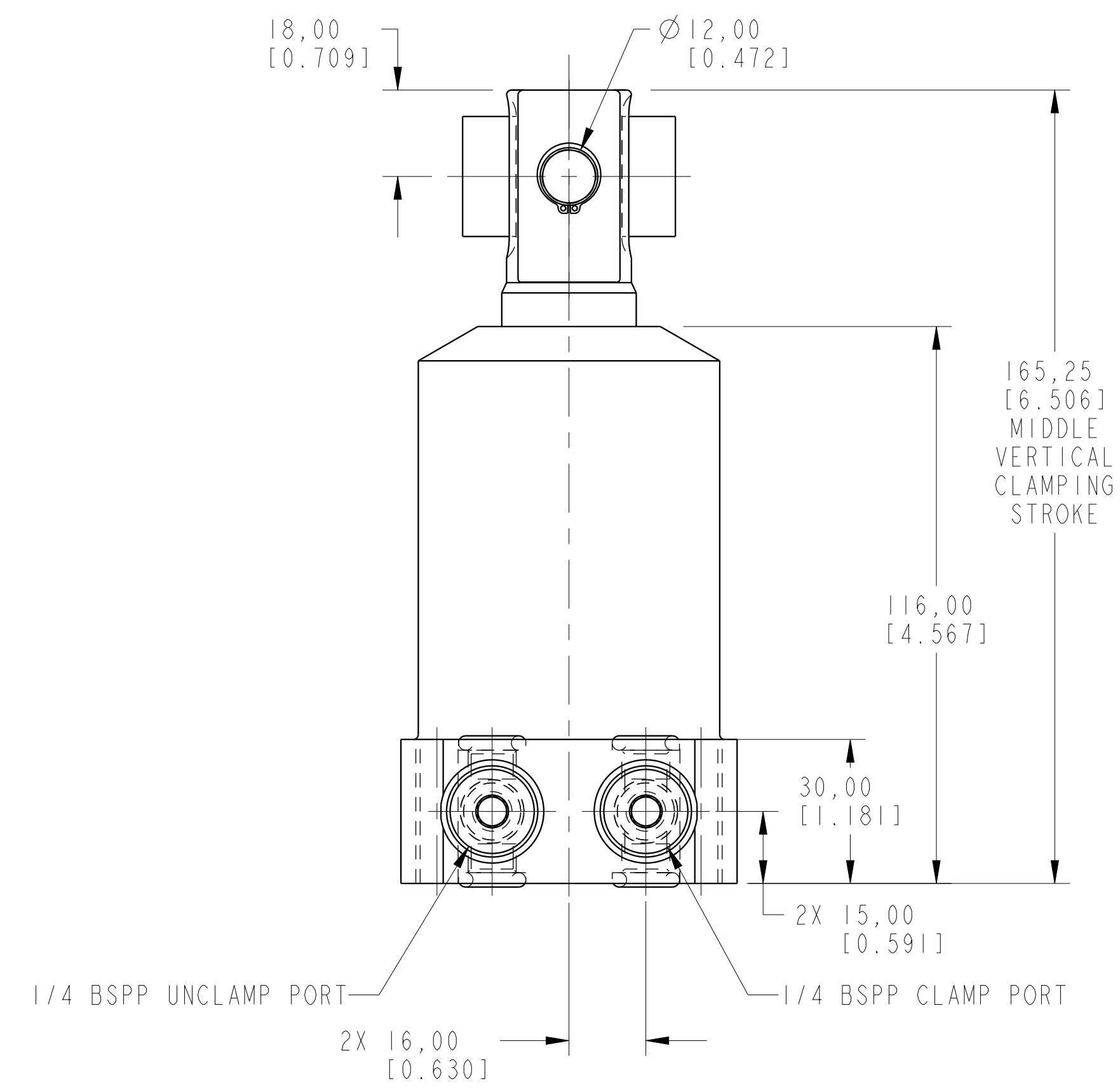
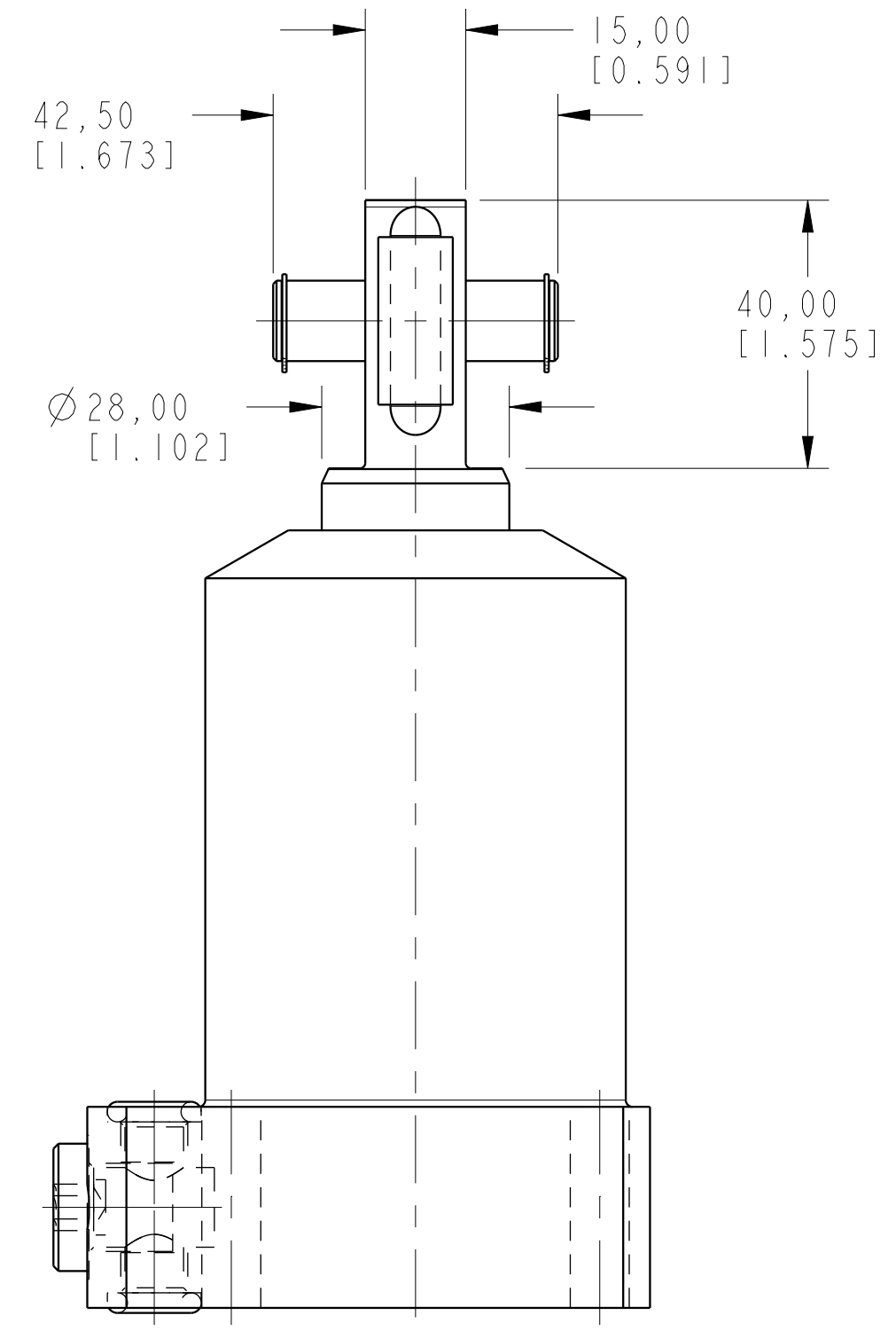


ILCML1415010R0 REV A ECN 2714



CAD CONTROL DRAWING		 VEKTEK, INC. 1334 E. SIXTH AVE. P.O. BOX 625 EMPORIA, KS. 66801 U.S.A.					
A	2714	RELEASE	MAJ	3-25-15	LI-4150-10-R-0	A	SC, BF, 7MPa, 50B, RH, CLEVIS, 0
REV	IN ACCORDANCE WITH ECN	EFFECTIVE DATE	REVISED BY	DATE	REFERENCE MODEL	REF REV	*****
DRW BY: ALUTHI	DRAWING STATUS: Released				TOLERANCES DO NOT APPLY	UNITS	SIZE
DATE: 8-13-14	PRODUCTION APPROVED FOR RELEASED STATUS ONLY				DIMENSIONS ARE NOMINAL	mm (inch)	D
					ILCML1415010R0	REV	A