

1/4 BSPP OR O-RING UNCLAMP PORT "B5"

1/4 BSPP OR O-RING CLAMP PORT "A5"

SCALE 0.625
ILCML5600541 REV A ECN3499

QUICK CONNECTOR UNCLAMP PORT "B1"

QUICK CONNECTOR CLAMP PORT "A1"

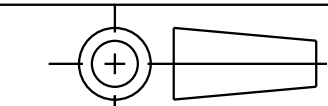
1/4 BSPP OR O-RING CLAMP PORT "A4"

1/4 BSPP CLAMP PORT "A2" USE ADAPTER IN END PORT AS REQUIRED

1/4 BSPP UNCLAMP PORT "B3"

VEKTEK
VEKTEK, INC.
1334 E. SIXTH AVE. P.O. BOX 625
EMPORIA, KS. 66801 U.S.A.

CAD CONTROL DRAWING



A	3499	RELEASE	DLG	6/21/18	LS600541	A	PD, 2H, DUAL, 7MPA, EXT ACC
REV	IN ACCORDANCE WITH ECN	EFFECTIVE DATE	REVISED BY	DATE	REFERENCE MODEL	REF REV	*****
DRW BY:	DLG	DRAWING STATUS: Released			TOLERANCES DO NOT APPLY	UNITS	SIZE
DATE:	6/12/18	PRODUCTION APPROVED FOR RELEASED STATUS ONLY			DIMENSIONS ARE NOMINAL	mm (inch)	D
							ILCML5600541
							FORM FEG036, Rev. C