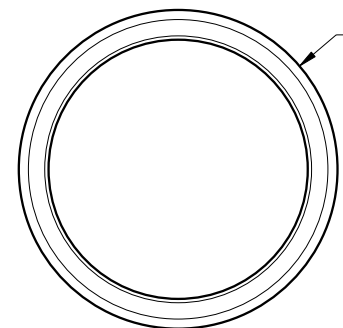
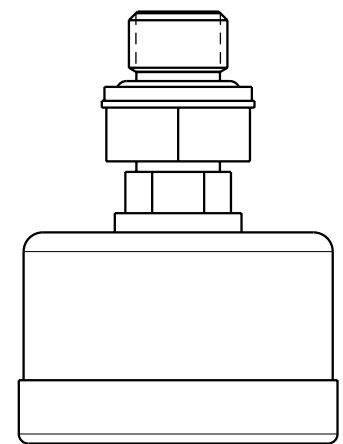
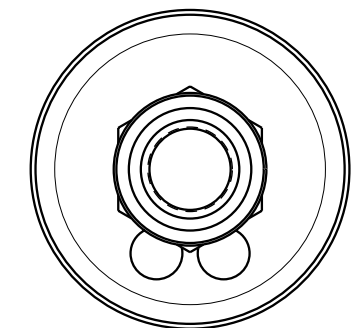
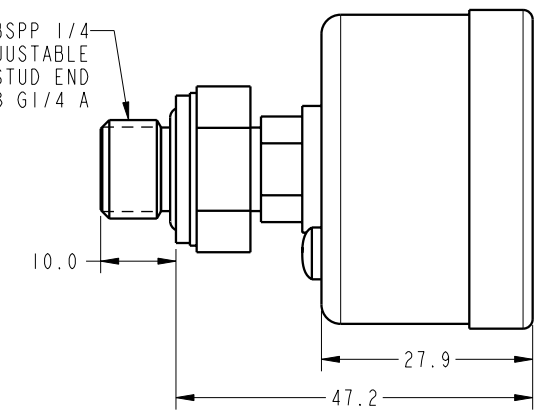


ILCML7212200 REV A ECN 2553



BSPP 1/4  
ADJUSTABLE  
STUD END  
PER ISO 1179-3 G1/4 A



CAD CONTROL  
DRAWING



VEKTEK, INC.  
1334 E. SIXTH AVE. P.O. BOX 625  
EMPORIA, KS. 66801 U.S.A.

A	2553	RELEASE	ALUTHI	7-19-13	L7212200	A	GAUGE, PRESS, HYDR, 1500PSI, CBM, BSPP 1/4, 40mm		
REV	IN ACCORDANCE WITH ECN	EFFECTIVE DATE	REVISED BY	DATE	REFERENCE MODEL	REF REV			
DRW BY:	ALUTHI	DRAWING STATUS: <b>Released</b>			TOLERANCES DO NOT APPLY	UNITS	SIZE	ILCML7212200	REV A
DATE:	4-4-13	PRODUCTION APPROVED FOR RELEASED STATUS ONLY			DIMENSIONS ARE NOMINAL	mm [inch]	B		

FORM FEG036, Rev. A

SHEET 1 OF 1