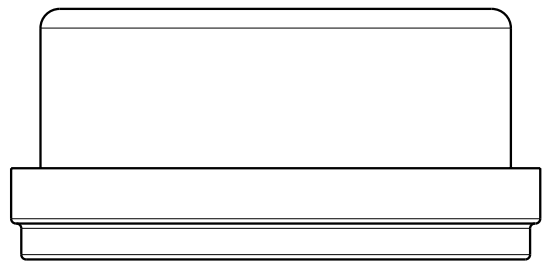


ILCML7221200 REV A ECN 2553



<b>CAD CONTROL DRAWING</b>			
		VEKTEK, INC. 1334 E. SIXTH AVE. P.O. BOX 625 EMPORIA, KS. 66801 U.S.A.	

A	2553	RELEASE	ALUTHI	7-19-13	L7221200	A	GAUGE, PRESS, HYDR, 1500PSI, LBM, BSPP1/4, 2-1/2"	
REV	IN ACCORDANCE WITH ECN	EFFECTIVE DATE	REVISED BY	DATE	REFERENCE MODEL	REF REV		
DRW BY:	ALUTHI	DRAWING STATUS: <b>Released</b>			TOLERANCES DO NOT APPLY	UNITS	SIZE	ILCML7221200 REV A
DATE:	4-5-13	PRODUCTION APPROVED FOR RELEASED STATUS ONLY			DIMENSIONS ARE NOMINAL	mm [inch]	B	

FORM FEG036, Rev. A

SHEET 1 OF 1