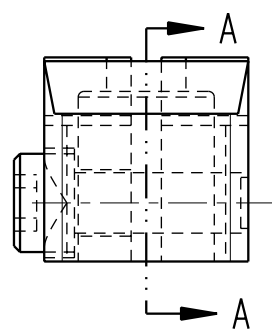
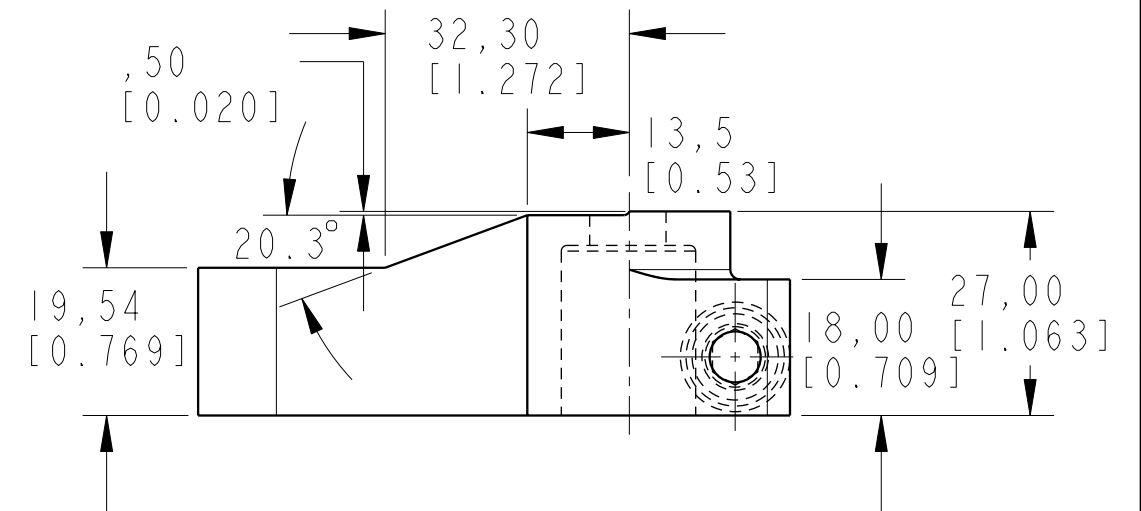
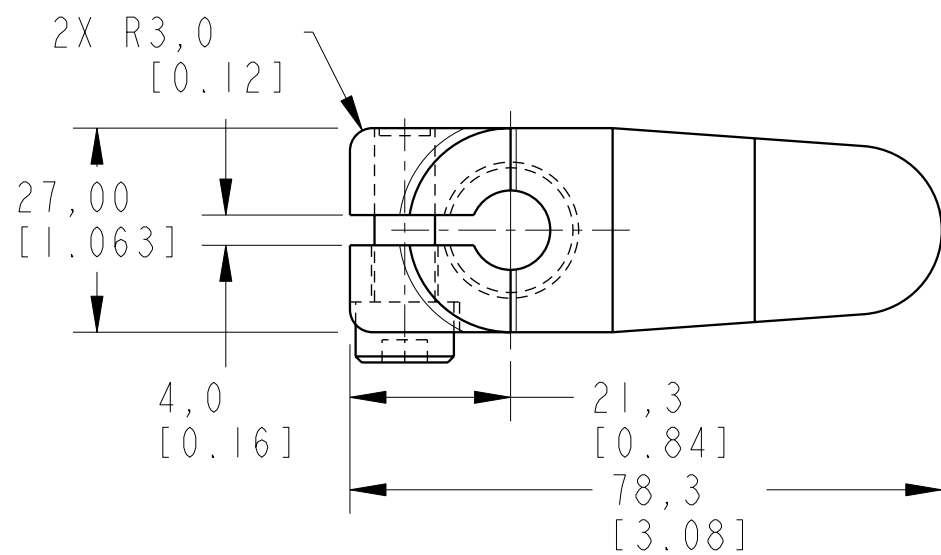
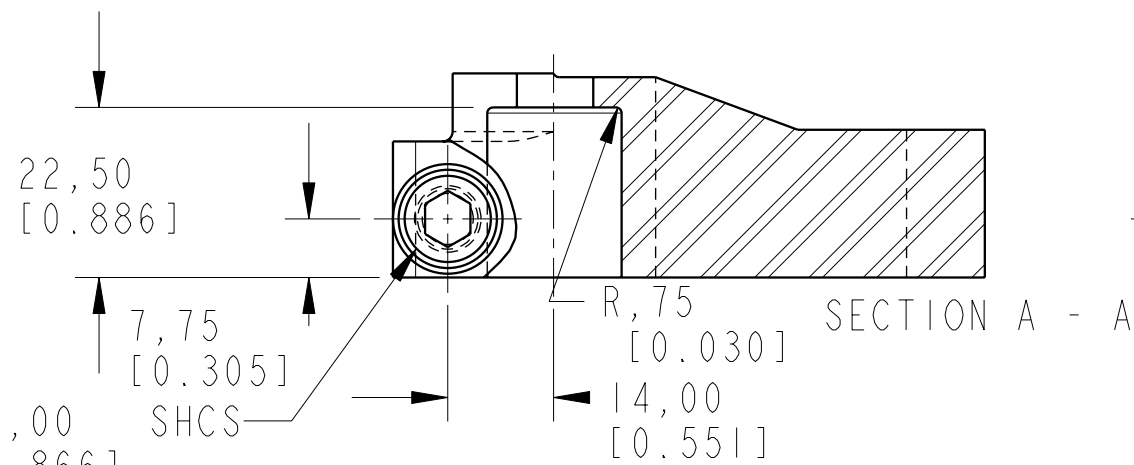


ILCML9143200 REV A ECN 2549



M8-1.25 X 22.00 SHCS [0.866]



CAD CONTROL DRAWING



VEKTEK, INC.  
1334 E. SIXTH AVE. P.O. BOX 625  
EMPORIA, KS. 66801 U.S.A.

A	2549	RELEASE	OMITCHELL	6-3-13	L9143200	A	ARM, SC, 7MPa, 32B, SHORT
REV	IN ACCORDANCE WITH ECN	EFFECTIVE DATE	REVISED BY	DATE	REFERENCE MODEL	REF REV	*****
DRW BY: ALUTHI	DRAWING STATUS: <b>ECN</b>				TOLERANCES DO NOT APPLY	UNITS	SIZE
DATE: 2-4-13	PRODUCTION APPROVED FOR RELEASED STATUS ONLY				DIMENSIONS ARE NOMINAL	mm [inch]	B
					ILCML9143200		REV A

FORM FEG036, Rev. A

SHEET 1 OF 1