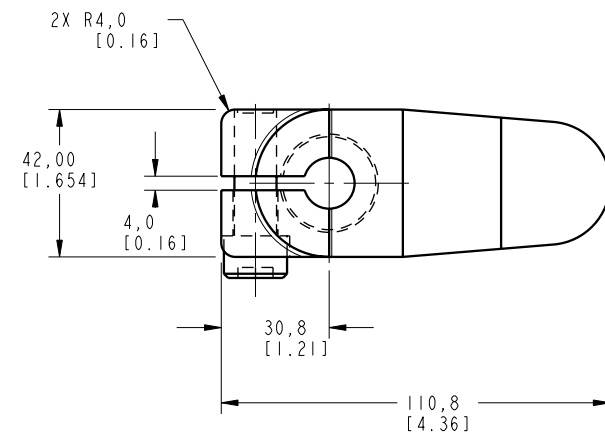
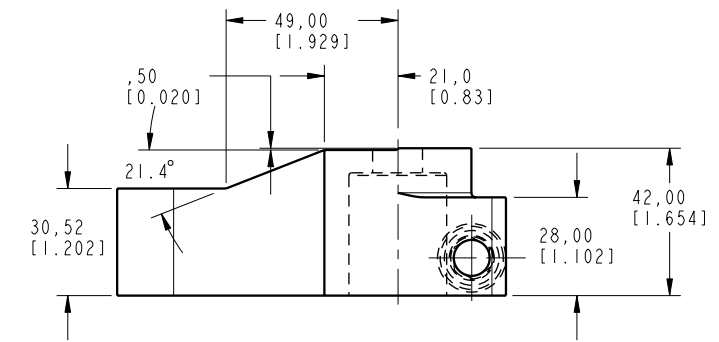
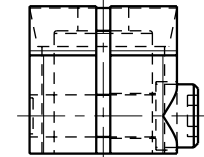
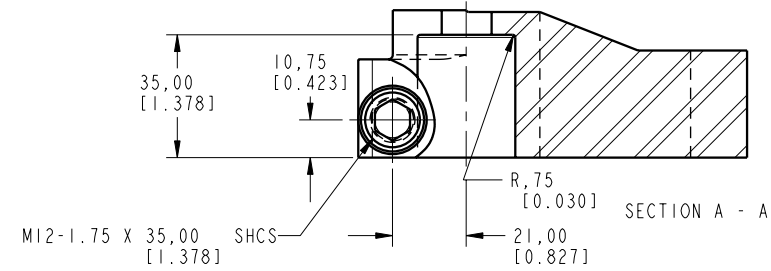
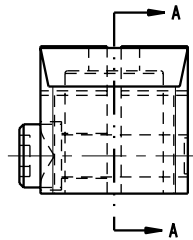


ILCML9145000 REV A ECN 2549



CAD CONTROL DRAWING



VEKTEK, INC.  
1334 E. SIXTH AVE. P.O. BOX 625  
EMPORIA, KS. 66801 U.S.A.

REV	A	2549	RELEASE	OMITCHELL	6-3-13	REFERENCE MODEL	L9145000	REF REV	A	ARM, SC, 7MPa, 50B, SHORT
REV	IN ACCORDANCE WITH ECN		EFFECTIVE DATE	REVISED BY	DATE	TOLERANCES DO NOT APPLY DIMENSIONS ARE NOMINAL	UNITS	SIZE	REV	
DRW BY:	ALUTHI		DRAWING STATUS: ECN			mm [inch]	D	ILCML9145000	A	
DATE:	2-4-13		PRODUCTION APPROVED FOR RELEASED STATUS ONLY							

FORM FEQ036, Rev. B

SHEET 1 OF 1