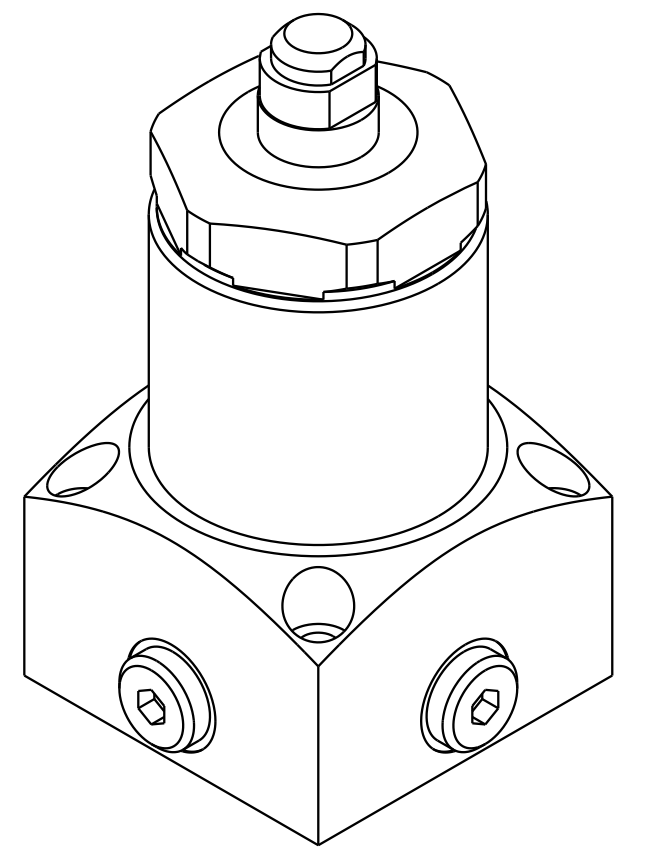
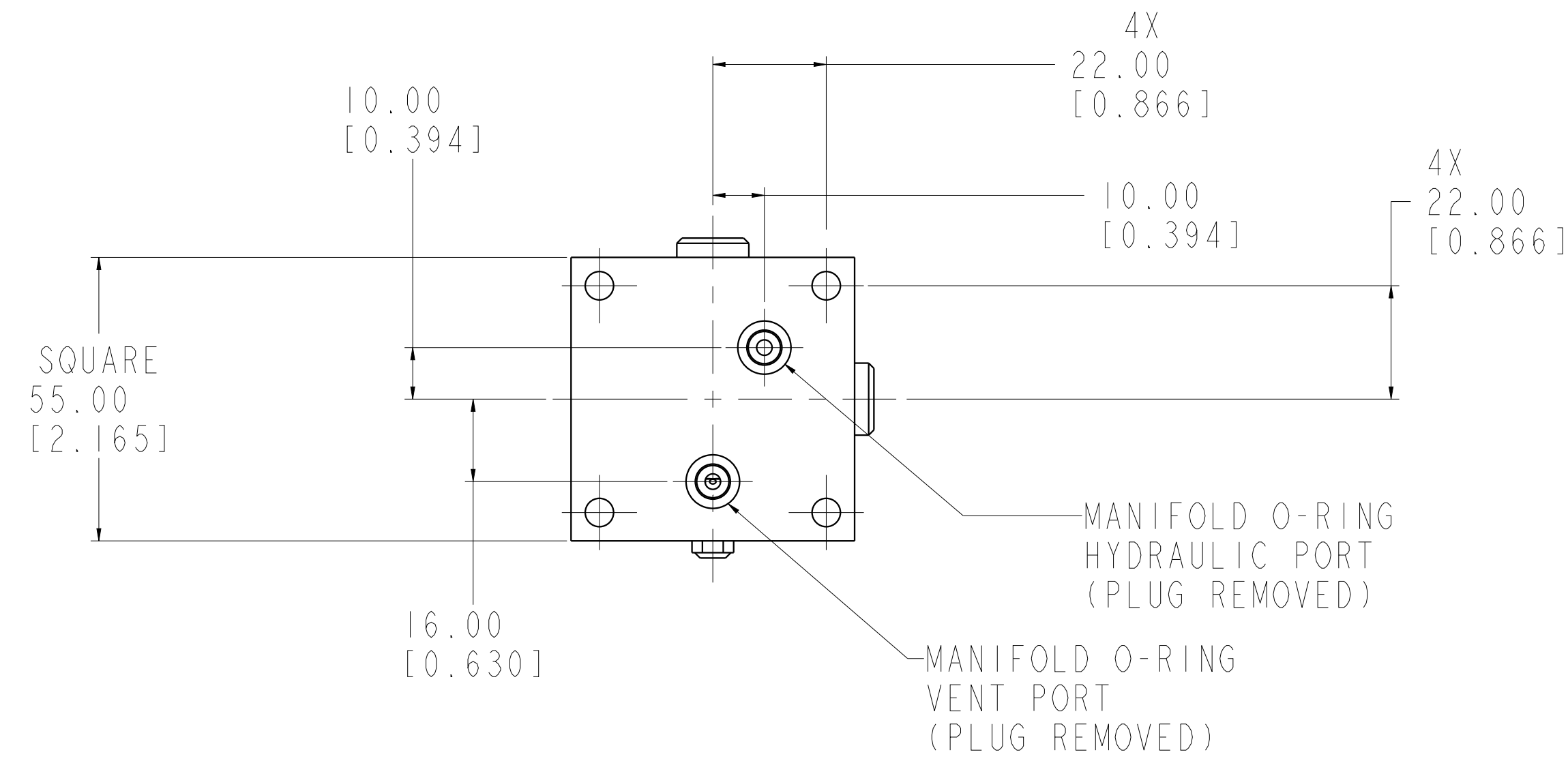


1

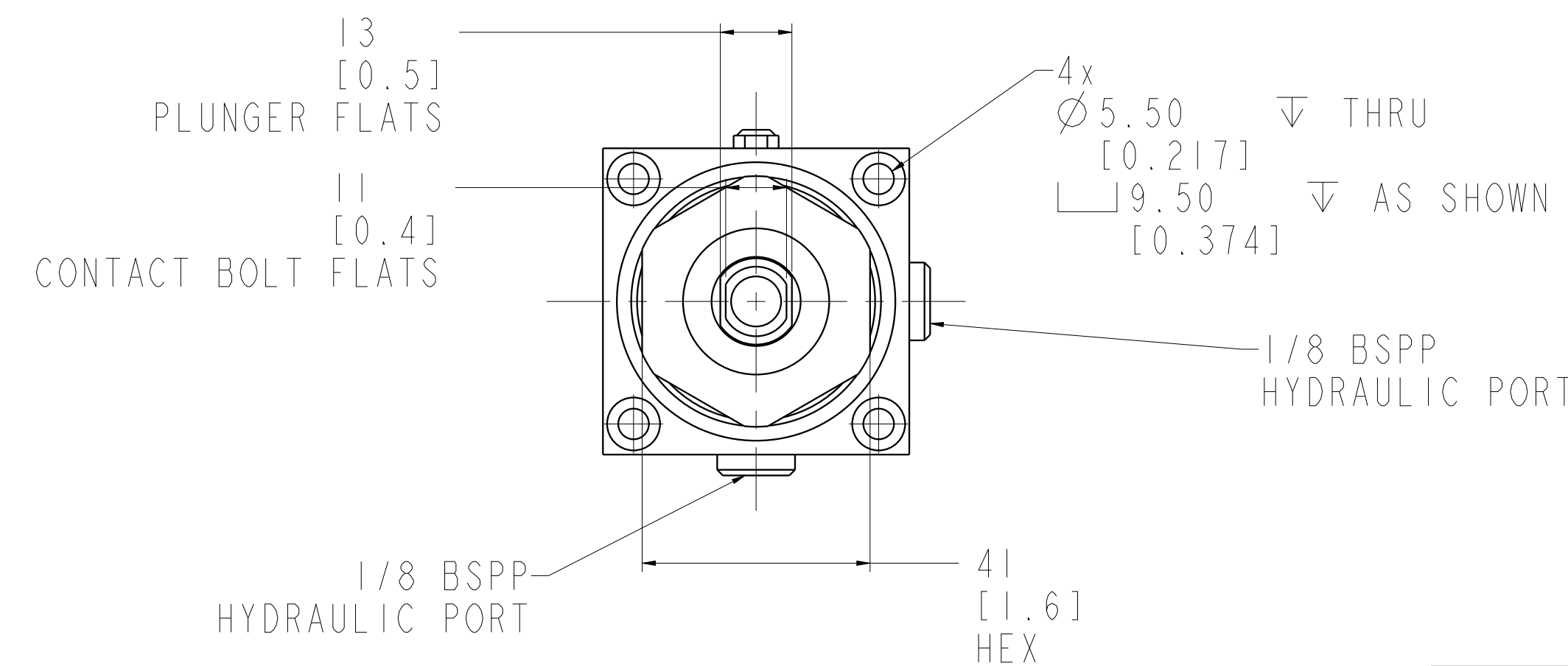
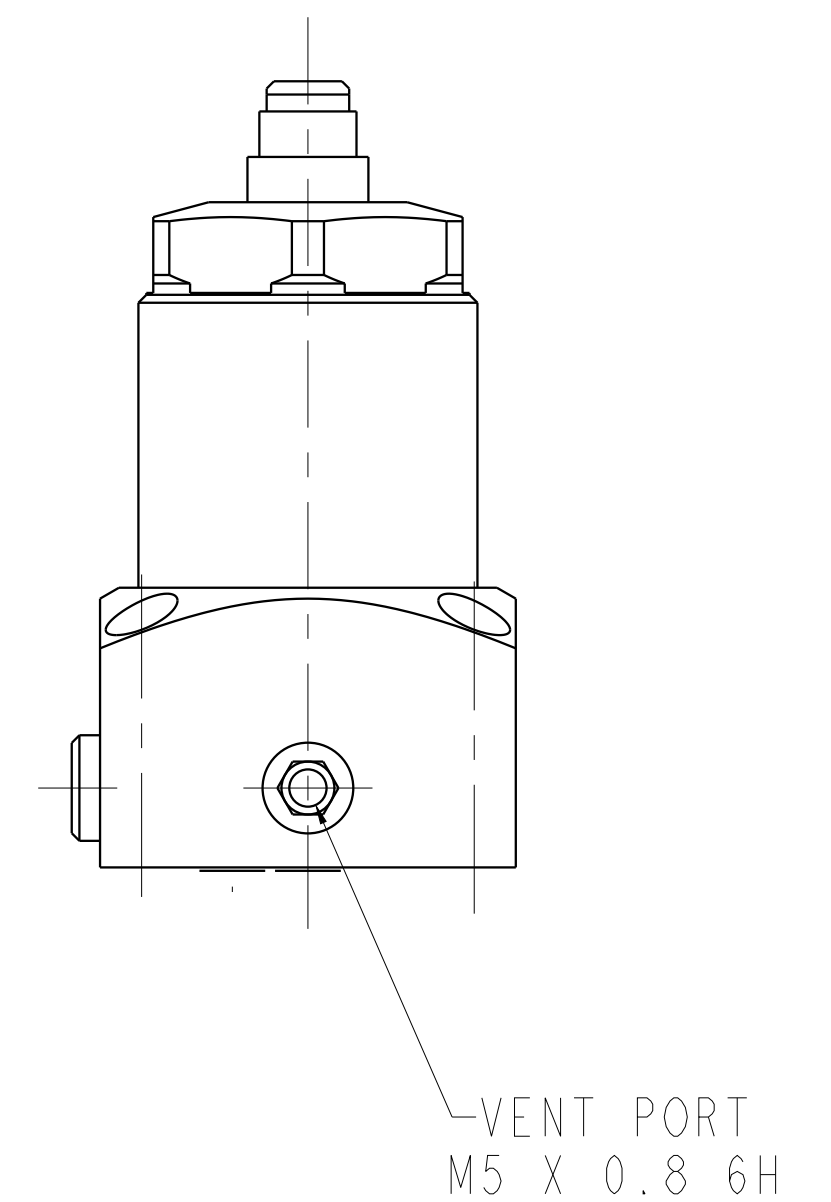
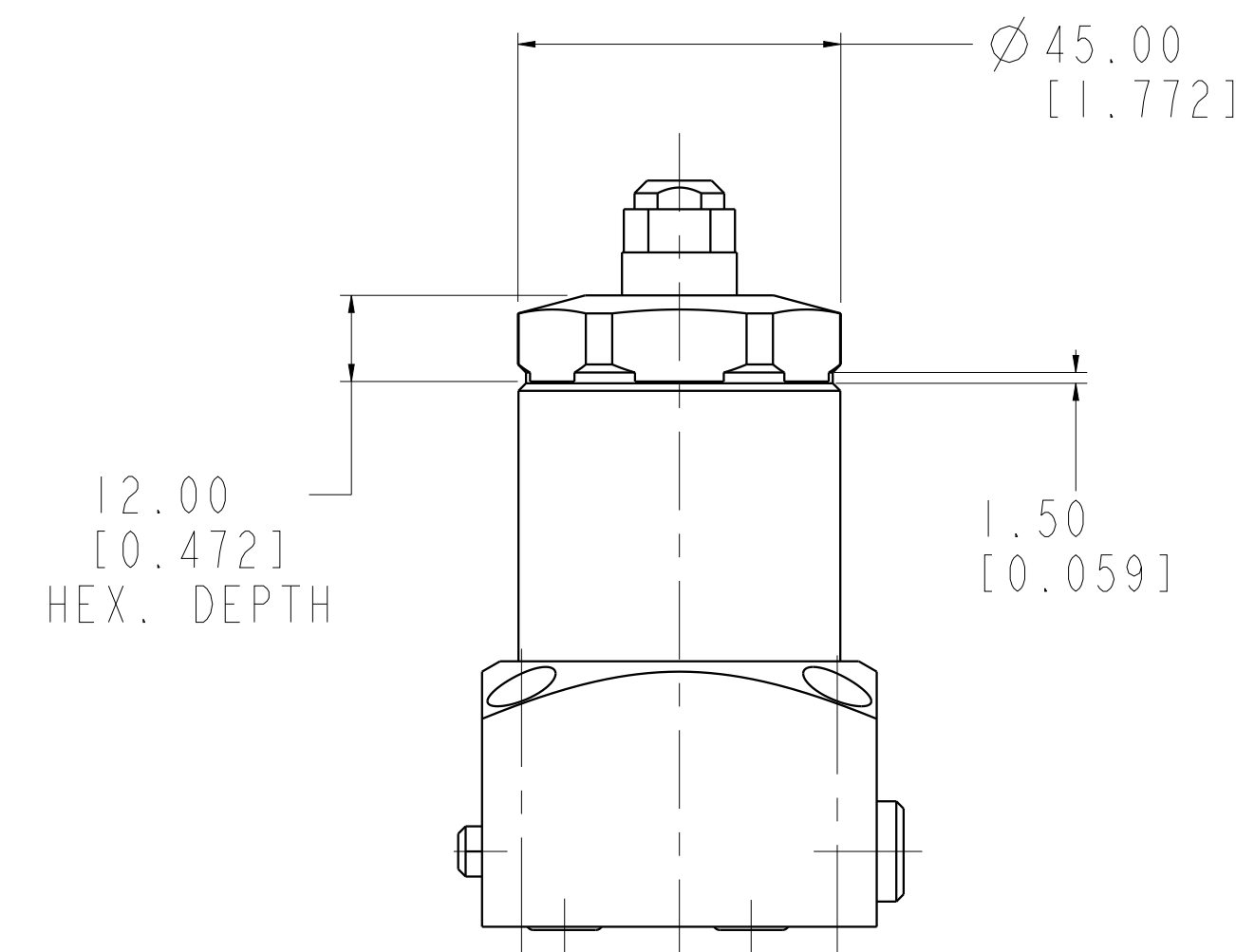
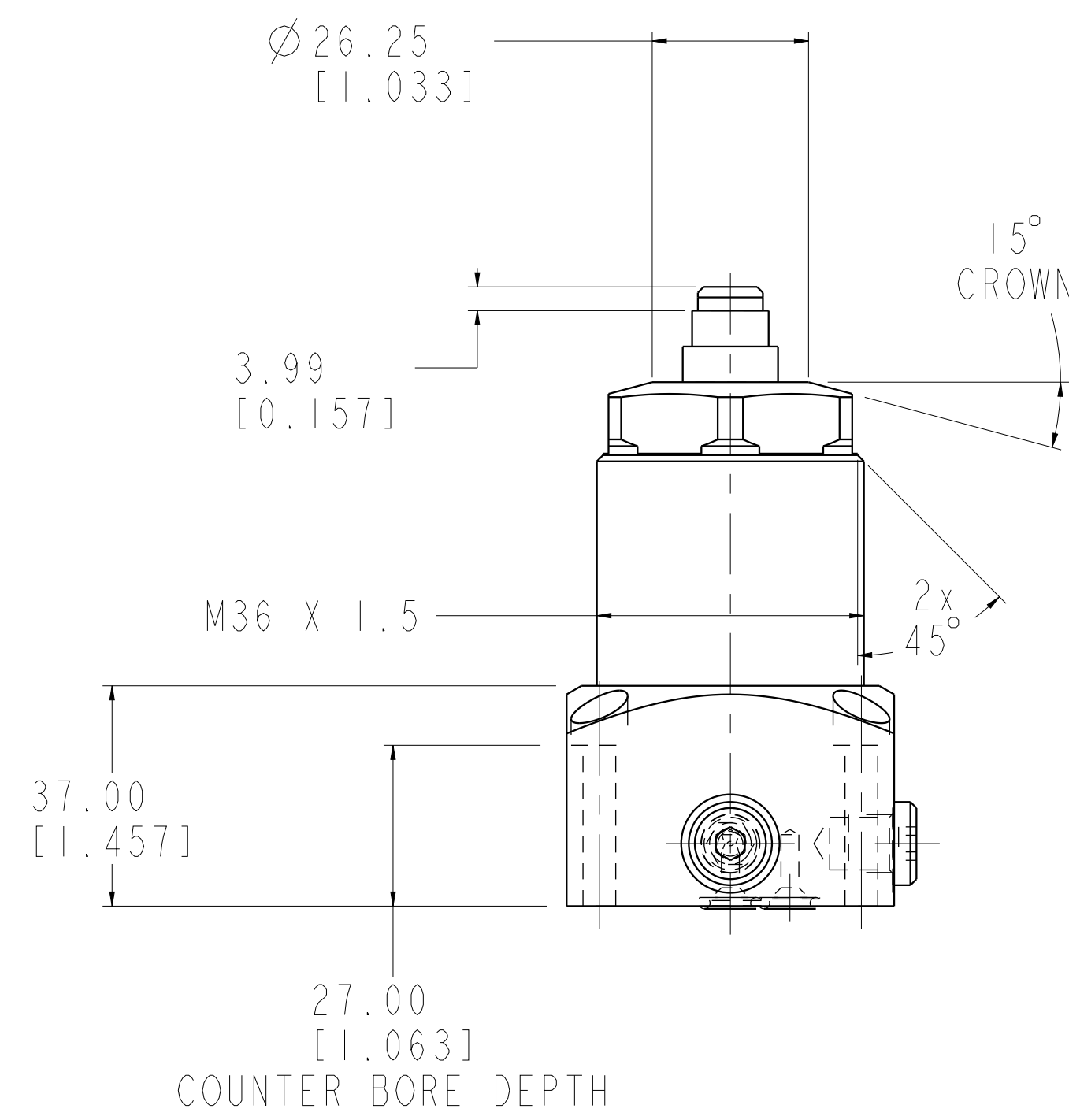
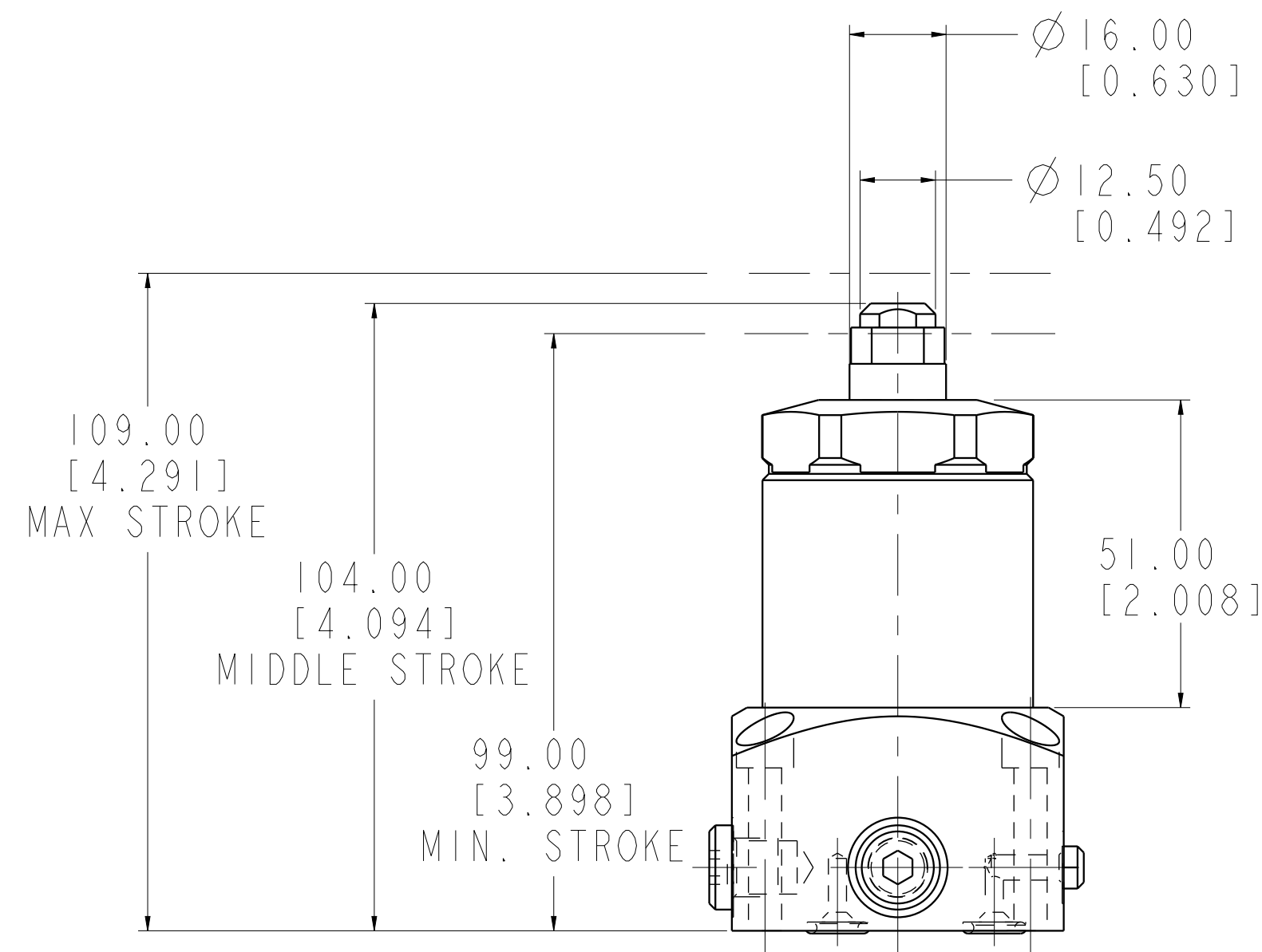
2

3

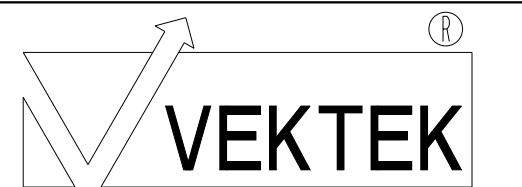
4



ILCML1061600H REV B ECN 3849



CAD CONTROL DRAWING



VEKTEK, INC.  
1334 E. SIXTH AVE. P.O. BOX 625  
EMPORIA, KS. 66801 U.S.A.

B	3849	RELEASE	MJUST	7/10/19	LI-0616-00L & LI-0616-00H	A	ASSY, WS, 7MPa, BM, FA, 10kN
REV	IN ACCORDANCE WITH ECN	EFFECTIVE DATE	REVISED BY	DATE	REFERENCE MODEL	REF REV	*****
DRW BY:	N. KARRAS	DRAWING STATUS: Released			TOLERANCES DO NOT APPLY	UNITS	SIZE
DATE:	06/19/12	PRODUCTION APPROVED FOR RELEASED STATUS ONLY			DIMENSIONS ARE NOMINAL	mm (inch)	D
					ILCML1061600H	REV	B

1

2

3

4

SHEET 1 OF 1