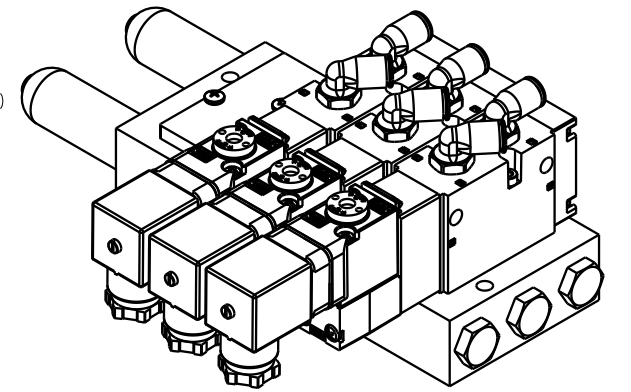
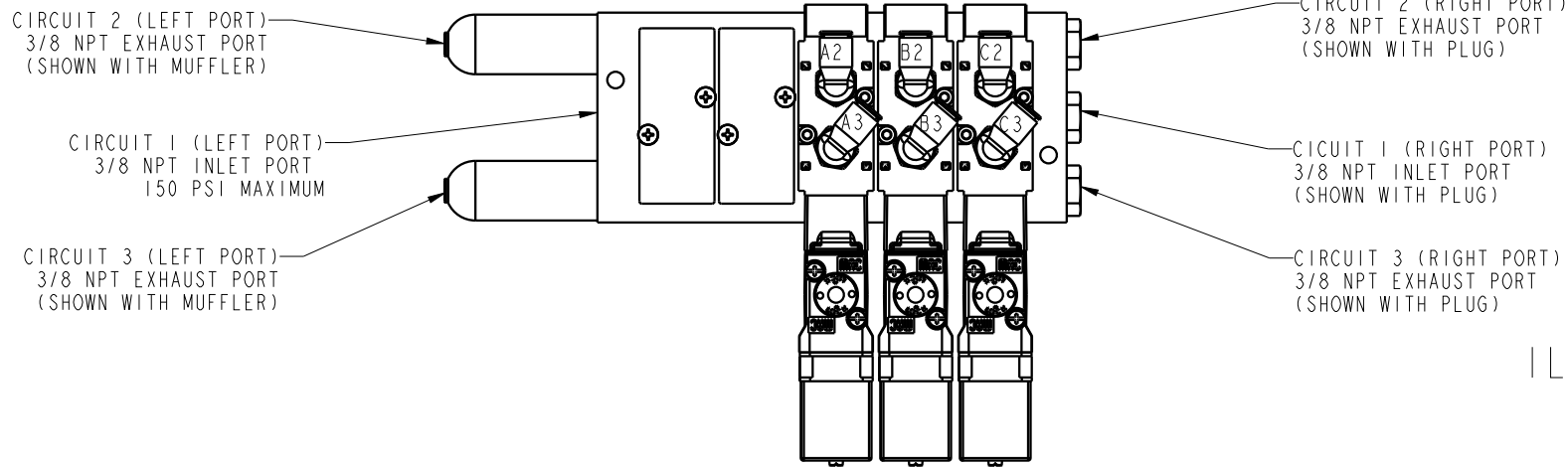
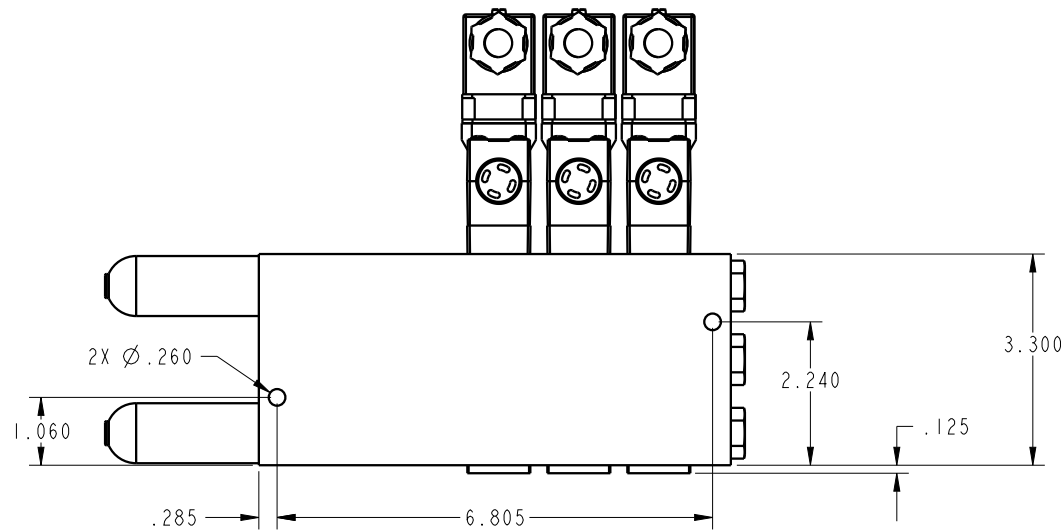
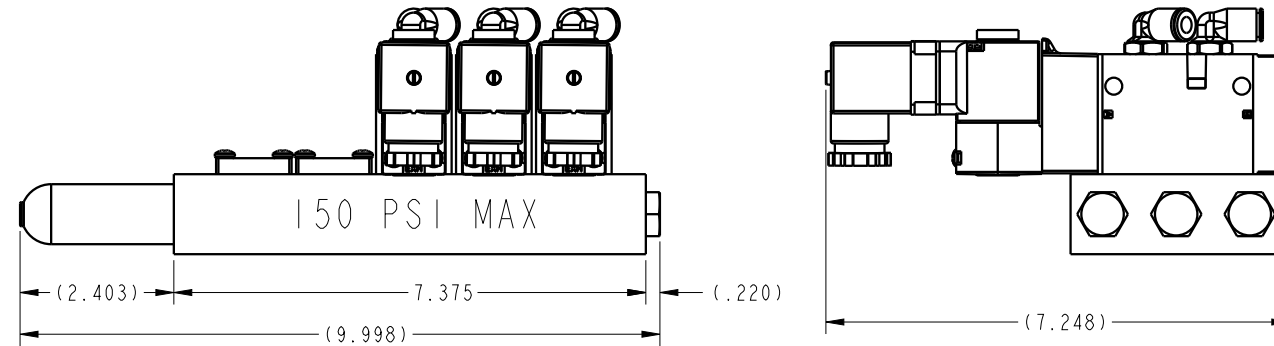
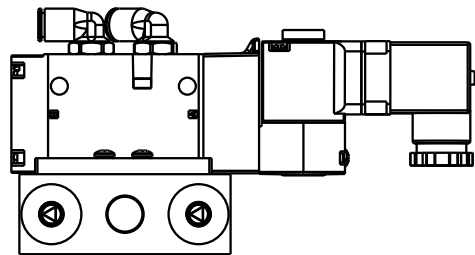


PORT DESCRIPTIONS		
PORT#	TYPE	DESCRIPTION
ALL VALVES PORT 2	1/4 NPT	PRESSURIZED WHEN SOLENOID RECIEVES 24V SIGNAL EXTENDING PISTON
ALL VALVES PORT 3	1/4 NPT	PRESSURIZED WHEN SOLENOID POWER IS DISCONNECTED RETRACTING PISTON

NOTE: THIS ASSEMBLY COMES WITH TWO 3/8NPT MUFFLERS & THREE 3/8 NPT PLUGS. MUFFLERS CAN BE USED ON EITHER THE LEFT OR RIGHT HAND PORTS, BUT THERE MUST BE AT LEAST ONE MUFFLER ON BOTH CIRCUIT 2&3. AIR INLET CAN ALSO BE ON EITHER SIDE. ALL UNUSED PORTS SHOULD BE PLUGGED!



ILCP7101213 REV A ECN#5120



RECOMENDED VALVE USES AND SETUP		
VALVE OPTION	ALL VALVES PORT 2	ALL VALVES PORT 3
AUTOCOUPLER SLIDE	TO PORT P7 ON SLIDE (EXTEND)	TO PORT P6 ON SLIDE (RETRACT)
AUTOCOUPLER/PALLET RECIEVER LOCK	TO PORT P3 (LOCKS AUTOCOUPLER)	TO PORT P4 (UNLOCKS AUTOCOUPLER)
AIR BLOWOFF	TO PORT P5 ON AUTOCOUPLER (AIR BLOWOFF ON)	NOT USED
AUTOCOUPLER AIR THROUGH PORT 1	TO PORT P1 ON AUTOCOUPLER	NOT USED
AUTOCOUPLER AIR THROUGH PORT 2	TO PORT P2 ON AUTOCOUPLER	NOT USED

NOTE: ONLY THREE OF THE ABOVE FEATURES CAN BE USED WITH THIS MODEL!

CAD CONTROL DRAWING			
		VEKTEK, INC. 1334 E. SIXTH AVE. P.O. BOX 625 EMPORIA, KS. 66801 U.S.A.	
A	5120	RELEASE	BDC
REV	IN ACCORDANCE WITH ECN	EFFECTIVE DATE	REVISED BY
DATE	7/6/23	7/10/23	
DRAWN BY: BDC		DRAWING STATUS: Design	
DATE: 7/6/23		PRODUCTION APPROVED FOR RELEASED STATUS ONLY	
TOLERANCES DO NOT APPLY DIMENSIONS ARE NOMINAL		SIZE B	ILCP7101213
		REF REV	REV A
		FORM FEG036, Rev. B	

SHEET 1 OF 1