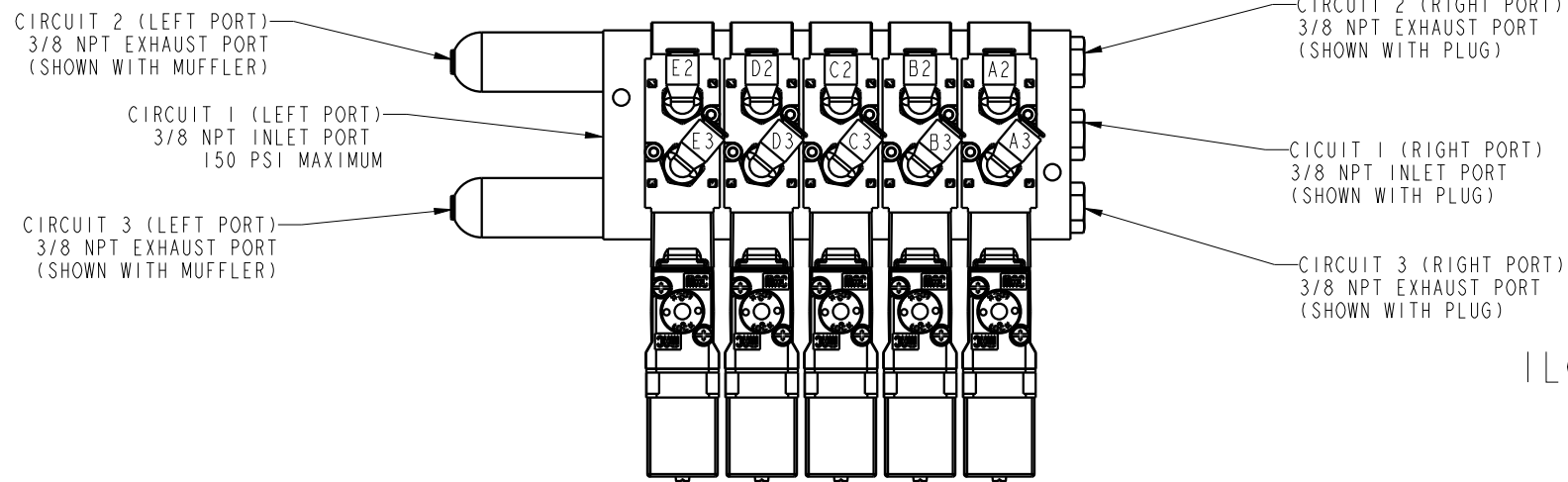
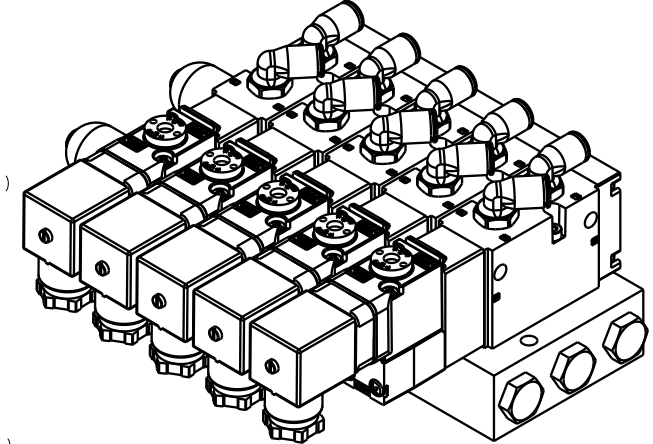
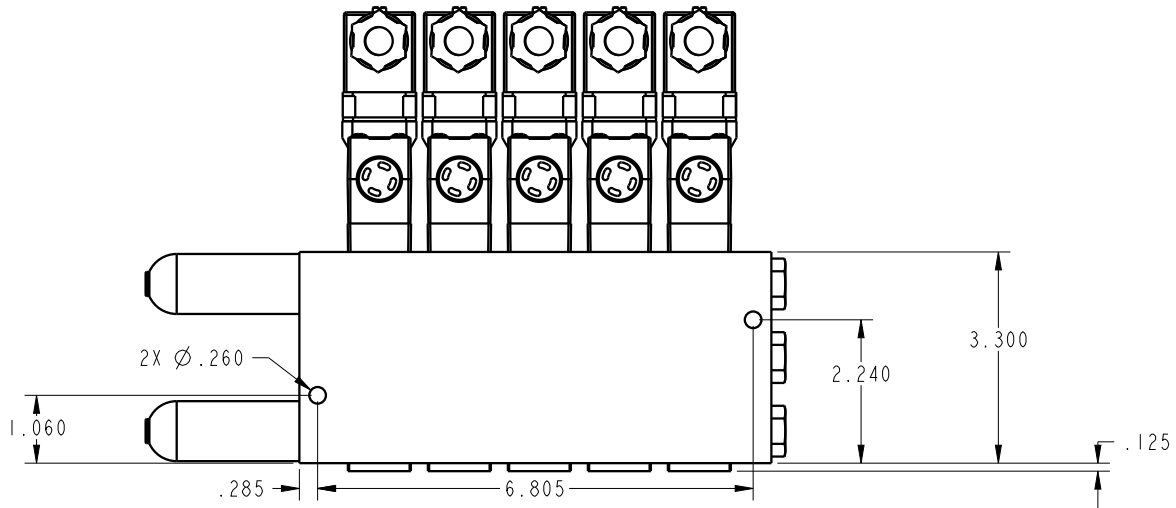
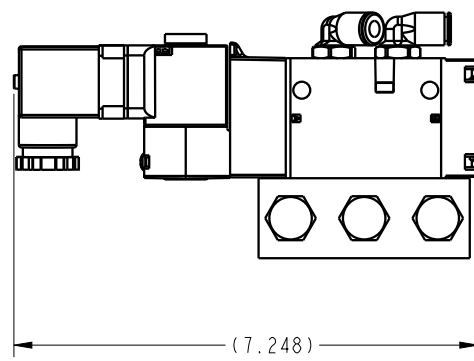
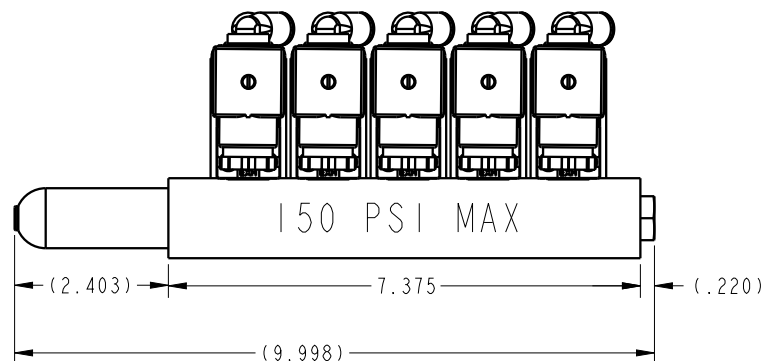
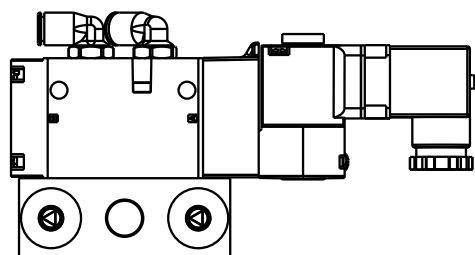


PORT DESCRIPTIONS		
PORT#	TYPE	DESCRIPTION
ALL VALVES PORT 2	1/4 NPT WITH 1/4 HOSE ADAPTER	PRESSURIZED WHEN SOLENOID RECIEVES 24V SIGNAL EXTENDING PISTON
ALL VALVES PORT 3	1/4 NPT WITH 1/4 HOSE ADAPTER	PRESSURIZED WHEN SOLENOID POWER IS DISCONNECTED RETRACTING PISTON

NOTE: THIS ASSEMBLY COMES WITH TWO 3/8NPT MUFFLERS & THREE 3/8 NPT PLUGS. MUFFLERS CAN BE USED ON EITHER THE LEFT OR RIGHT HAND PORTS, BUT THERE MUST BE AT LEAST ONE MUFFLER ON BOTH CIRCUIT 2&3. AIR INLET CAN ALSO BE ON EITHER SIDE. ALL UNUSED PORTS SHOULD BE PLUGGED!



ILCP7101215 REV A ECN#5120



RECOMENDED VALVE USES AND SETUP		
VALVE OPTION	ALL VALVES PORT 2	ALL VALVES PORT 3
AUTOCOUPLER SLIDE	TO PORT P7 ON SLIDE (EXTEND)	TO PORT P6 ON SLIDE (RETRACT)
AUTOCOUPLER/PALLET RECIEVER LOCK	TO PORT P3 (LOCKS AUTOCOUPLER)	TO PORT P4 (UNLOCKS AUTOCOUPLER)
AIR BLOWOFF	TO PORT P5 ON AUTOCOUPLER (AIR BLOWOFF ON)	NOT USED
AUTOCOUPLER AIR THROUGH PORT 1	TO PORT P1 ON AUTOCOUPLER	NOT USED
AUTOCOUPLER AIR THROUGH PORT 2	TO PORT P2 ON AUTOCOUPLER	NOT USED

CAD CONTROL DRAWING		
	VEKTEK, INC. 1334 E. SIXTH AVE. P.O. BOX 625 EMPORIA, KS. 66801 U.S.A.	

A	5120	RELEASE	BDC	7/10/23	P7101215	A	ILC, VALVE, PNEU, 5/2, 24V, SGL SOL, 5 BANK
REV	IN ACCORDANCE WITH ECN	EFFECTIVE DATE	REVISED BY	DATE	REFERENCE MODEL	REF REV	
DRW BY:	BDC	DRAWING STATUS: Design			TOLERANCES DO NOT APPLY	SIZE	ILCP7101215
DATE:	7/10/23	PRODUCTION APPROVED FOR RELEASED STATUS ONLY			DIMENSIONS ARE NOMINAL	REV	A