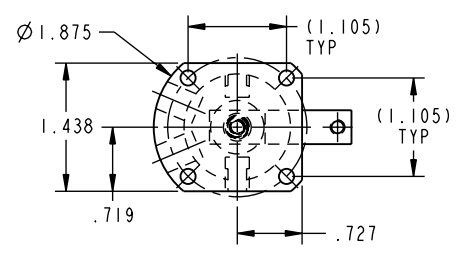
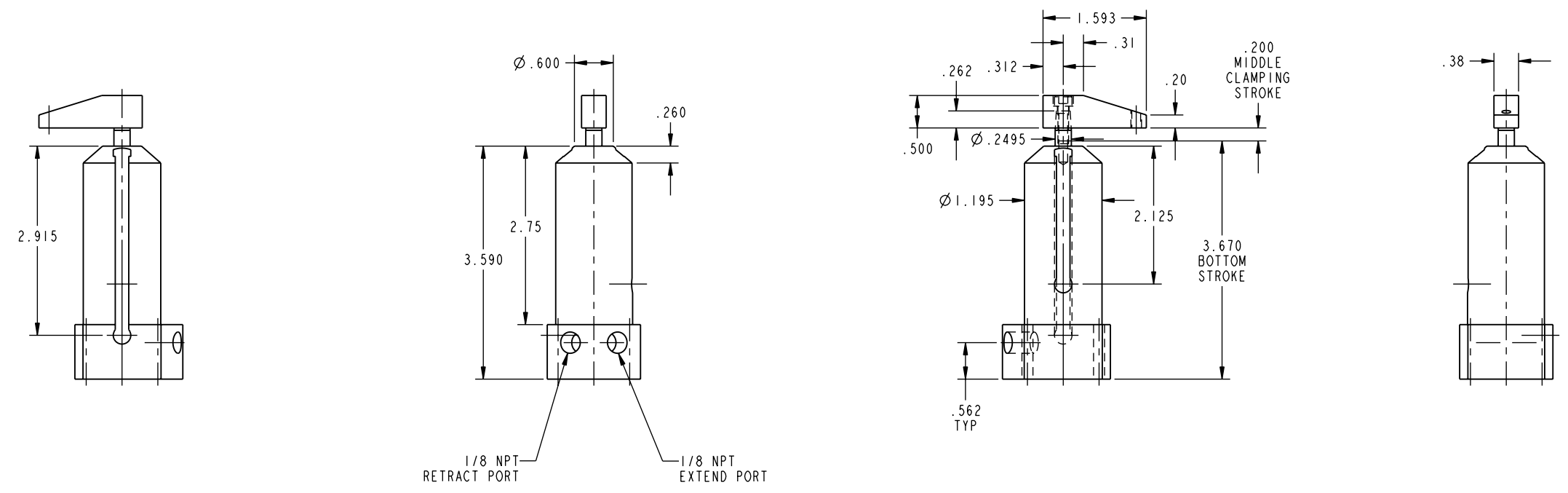


ILCP1504900 REV B ECN 2228



**CAD CONTROL DRAWING**

VEKTEK, INC.  
 1334 E. SIXTH AVE. P.O. BOX 625  
 EMPORIA, KS. 66801 U.S.A.

B	2228	RELEASE	JDW	9-15-10	P1504900	D	ASSY, SC, PNEU, BF, 1/2, STR
REV	IN ACCORDANCE WITH ECN	EFFECTIVE DATE	REVISED BY	DATE	REFERENCE MODEL	REF REV	*****
DRW BY:	K. ROEMER	DRAWING STATUS: <b>Released</b>			TOLERANCES DO NOT APPLY DIMENSIONS ARE NOMINAL		SIZE D
DATE:	10-06-06	PRODUCTION APPROVED FOR RELEASED STATUS ONLY			ILCP1504900		REV B