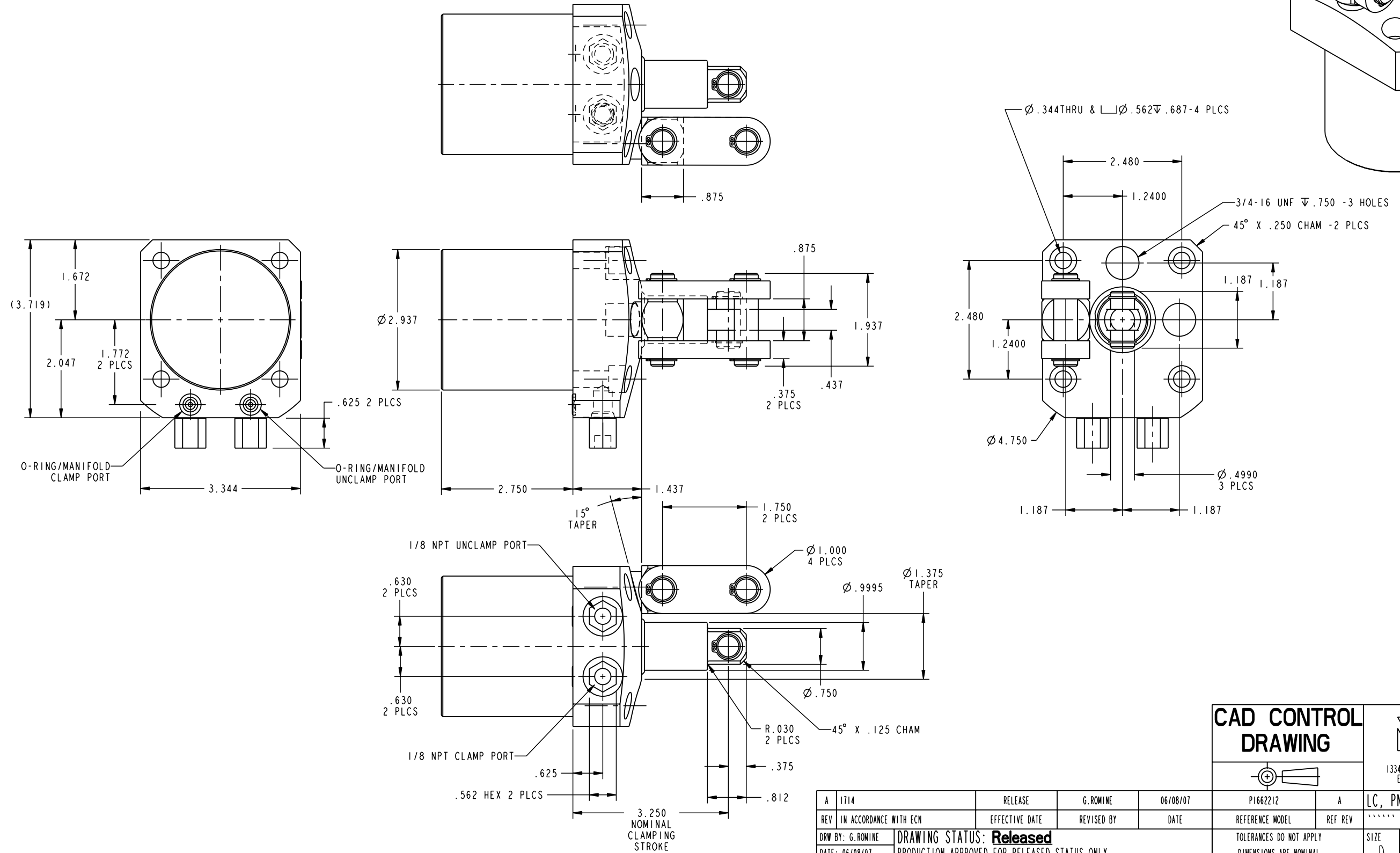
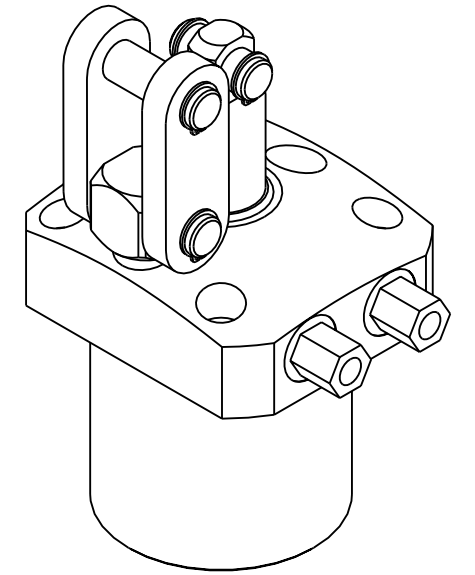


ILCP1662212 REV A ECN 1714



CAD CONTROL DRAWING			
VEKTEK, INC. 1334 E. SIXTH AVE. P.O. BOX 625 EMPORIA, KS. 66801 U.S.A.		LC, PNEU, 2 1/8, DA, LH	
A 1714	RELEASE	G.ROMINE	06/08/07
REV IN ACCORDANCE WITH ECN	EFFECTIVE DATE	REVISED BY	DATE
DRW BY: G.ROMINE	DRAWING STATUS: Released		REFERENCE MODEL
DATE: 06/08/07	PRODUCTION APPROVED FOR RELEASED STATUS ONLY		REF REV
TOLERANCES DO NOT APPLY DIMENSIONS ARE NOMINAL		SIZE	REV
		D	ILCP1662212 A
		FORM FEG036, Rev. A	