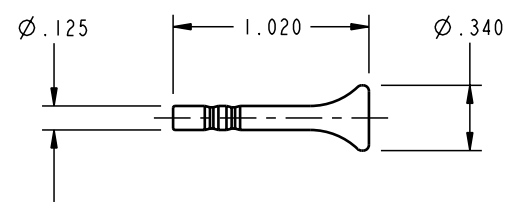


ILCP3001600 REV B ECN1588



	CAD CONTROL DRAWING	<p>VEKTEK VEKTEK, INC. 1334 E. SIXTH AVE. P.O. BOX 625 EMPORIA, KS. 66801 U.S.A.</p>

B	1588	RELEASE	K. ROEMER	11-02-06	P3001600	A	PLUG, FITTING, 1/8 TBG
REV	IN ACCORDANCE WITH ECN	EFFECTIVE DATE	REVISED BY	DATE	REFERENCE MODEL	REF REV	*****
DRW BY:	K. ROEMER	DRAWING STATUS: Released				TOLERANCES DO NOT APPLY DIMENSIONS ARE NOMINAL	
DATE:	11-02-06	PRODUCTION APPROVED FOR RELEASED STATUS ONLY					

SIZE B
ILCP3001600 REV B
FORM FEG036, Rev. A

SHEET 1 OF 1