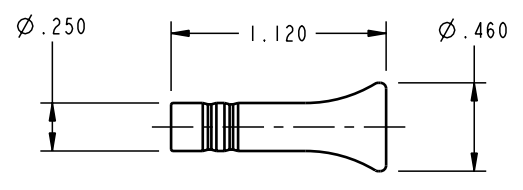




ILCP3002600 REV B ECN1588



| | | |
|---|--|---|
| CAD CONTROL DRAWING | |  VEKTEK, INC. 1334 E. SIXTH AVE. P.O. BOX 625 EMPORIA, KS. 66801 U.S.A. |
|  | | |

| | | | | | | | | |
|---------|------------------------|--|------------|----------|-------------------------|---------|------------------------|-------|
| B | 1588 | RELEASE | K. ROEMER | 11-02-06 | P3002600 | A | PLUG, FITTING, 1/4 TBG | |
| REV | IN ACCORDANCE WITH ECN | EFFECTIVE DATE | REVISED BY | DATE | REFERENCE MODEL | REF REV | ***** | |
| DRW BY: | K. ROEMER | DRAWING STATUS: Released | | | TOLERANCES DO NOT APPLY | | SIZE | |
| DATE: | 11-02-06 | PRODUCTION APPROVED FOR RELEASED STATUS ONLY | | | DIMENSIONS ARE NOMINAL | | B | |
| | | | | | | | ILCP3002600 | REV B |
| | | | | | | | FORM FEG036, Rev. A | |

SHEET 1 OF 1