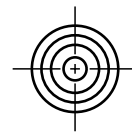
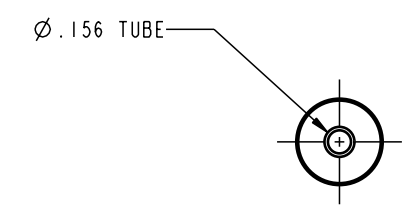
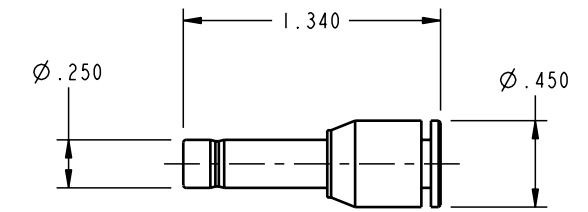


ILCP3012802 REV A ECN1588



**CAD CONTROL  
DRAWING**



VEKTEK, INC.  
1334 E. SIXTH AVE. P.O. BOX 625  
EMPORIA, KS. 66801 U.S.A.

|         |                        |  |            |          |   |         |                       |
|---------|------------------------|--|------------|----------|---|---------|-----------------------|
| A       | 1588                   | RELEASE                                      | K. ROEMER  | 11-02-06 | P3012801  | A       | REDUCER, 5/32-1/4 TBG |
| REV     | IN ACCORDANCE WITH ECN | EFFECTIVE DATE                               | REVISED BY | DATE     | REFERENCE MODEL                                   | REF REV | *****                 |
| DRW BY: | K. ROEMER              | DRAWING STATUS: <b>Released</b>              |            |          | TOLERANCES DO NOT APPLY<br>DIMENSIONS ARE NOMINAL |         | SIZE B                |
| DATE:   | 11-02-06               | PRODUCTION APPROVED FOR RELEASED STATUS ONLY |            |          |   |         | ILCP3012802 REV A     |
|         |                        |  |            |          |   |         | FORM FEG036, Rev. A   |

SHEET 1 OF 1