

1

2

3

4

D

D

C

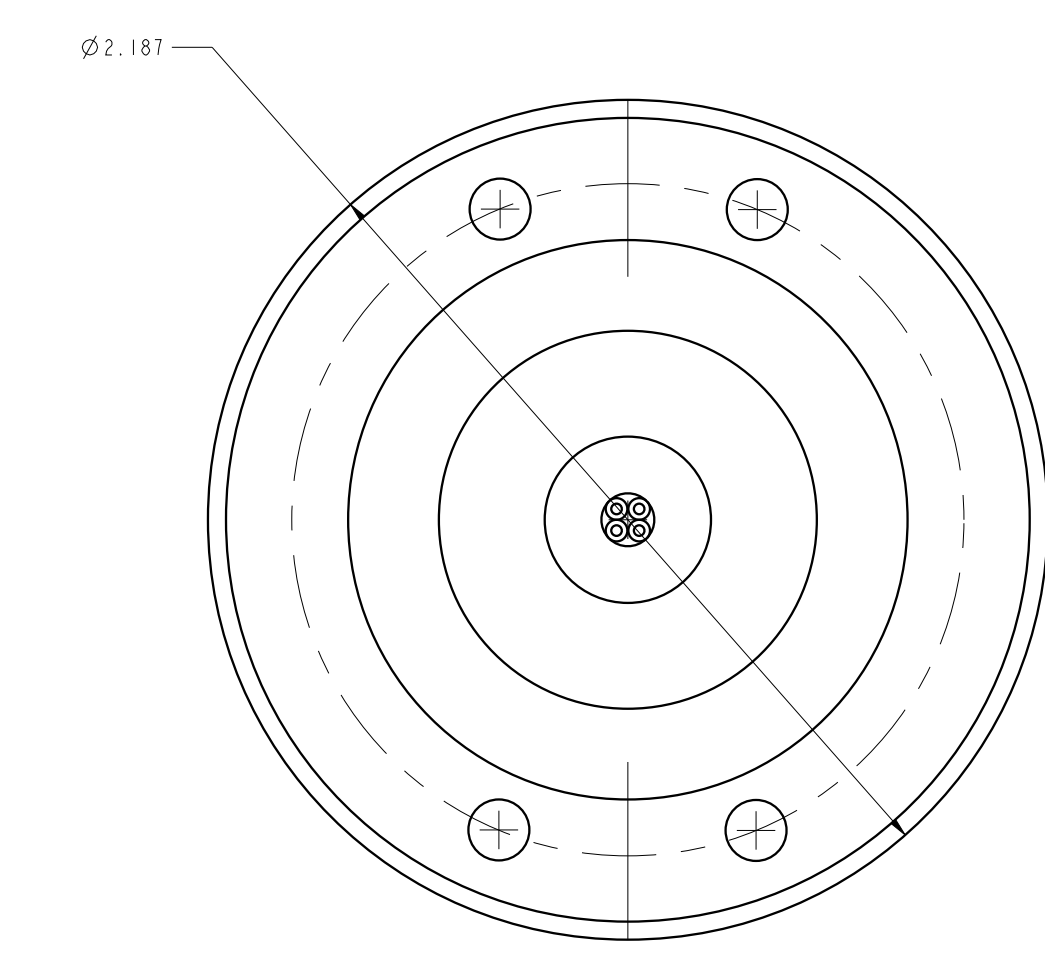
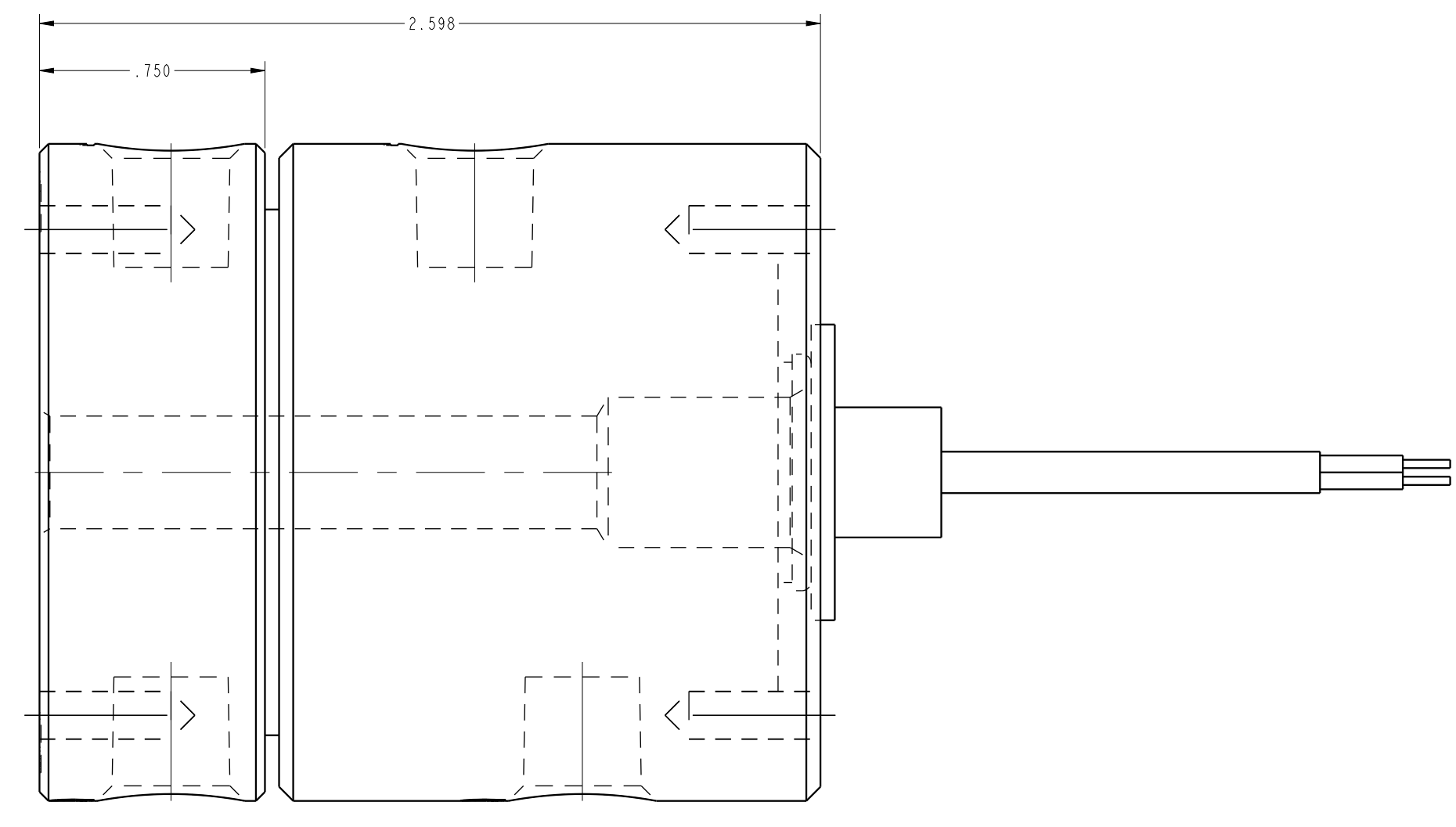
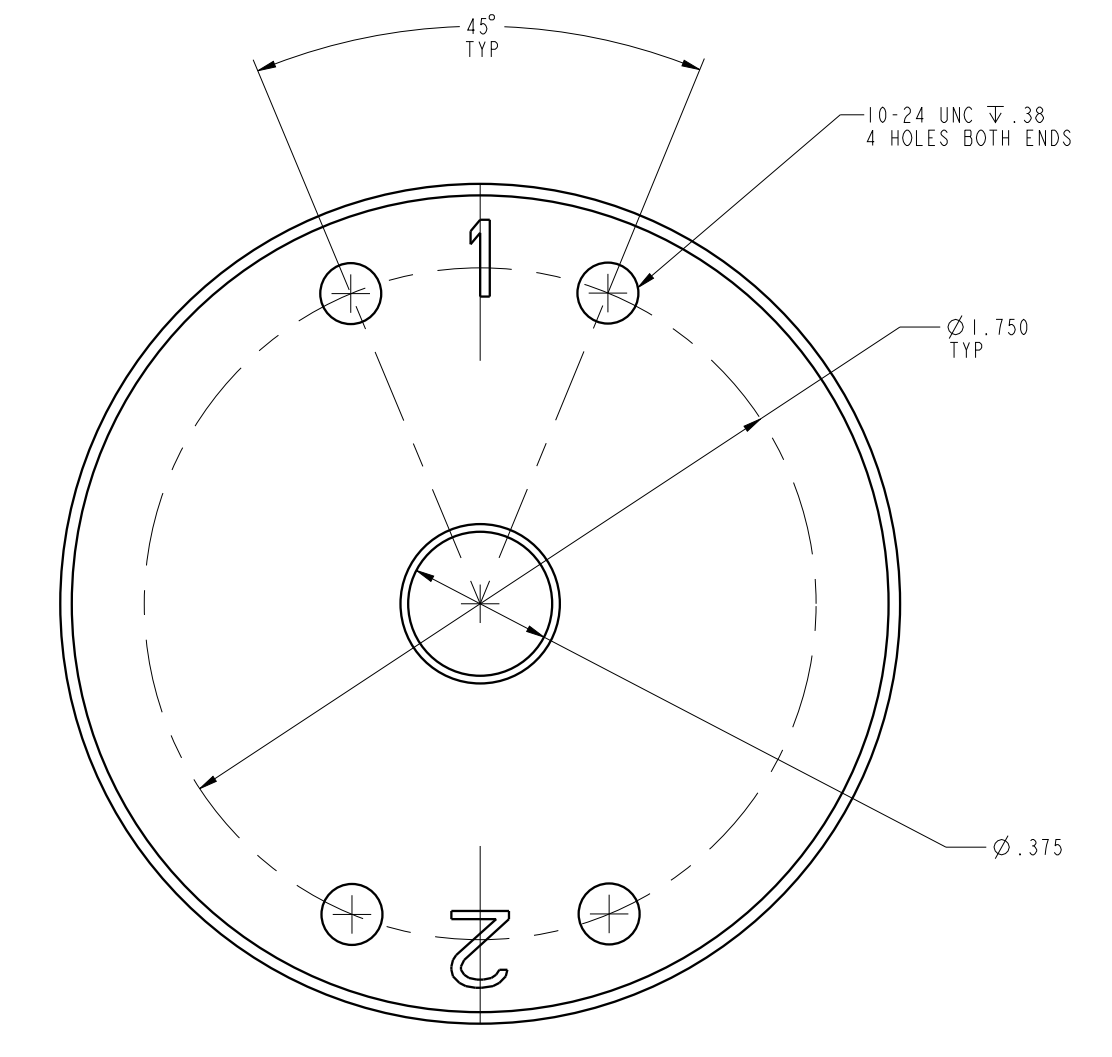
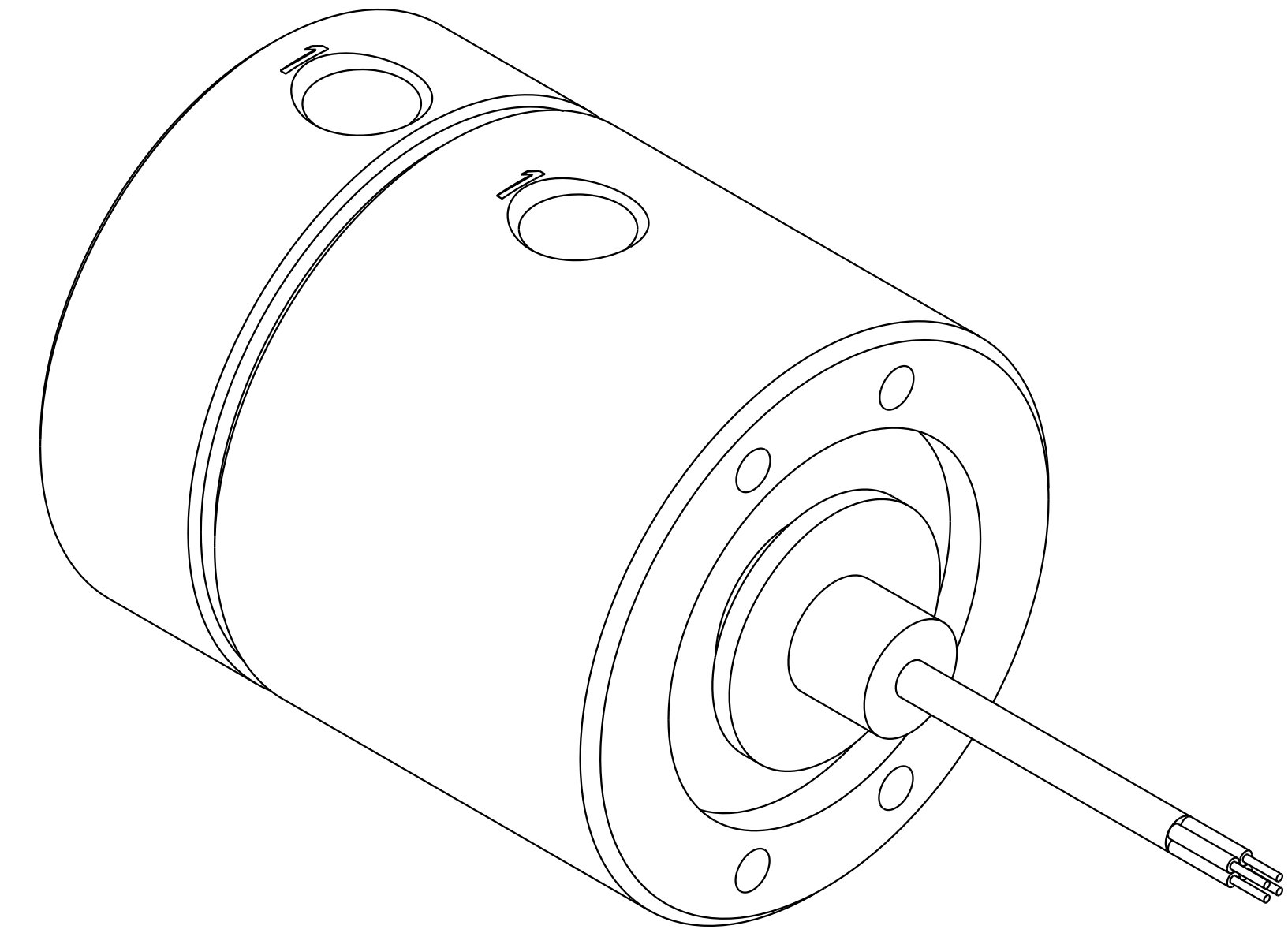
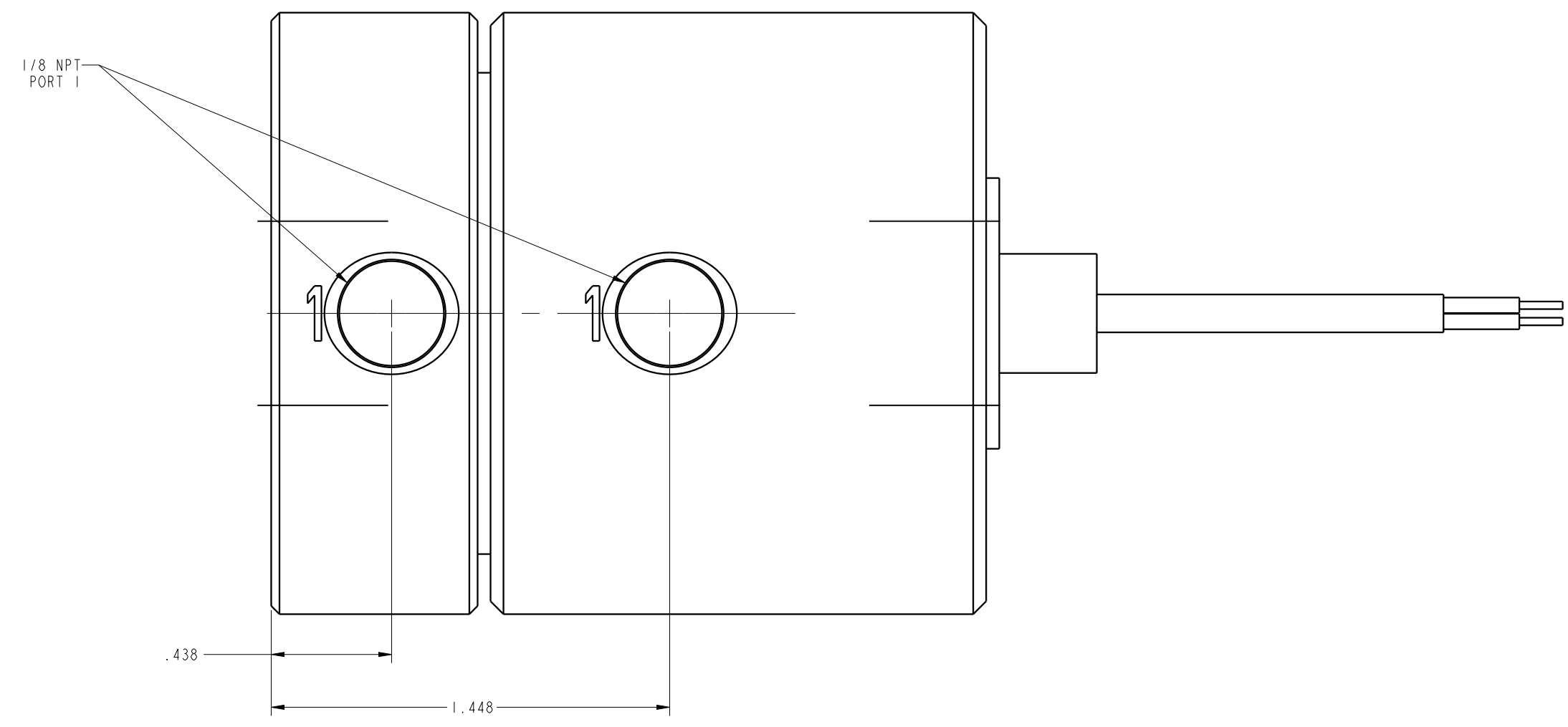
C

B

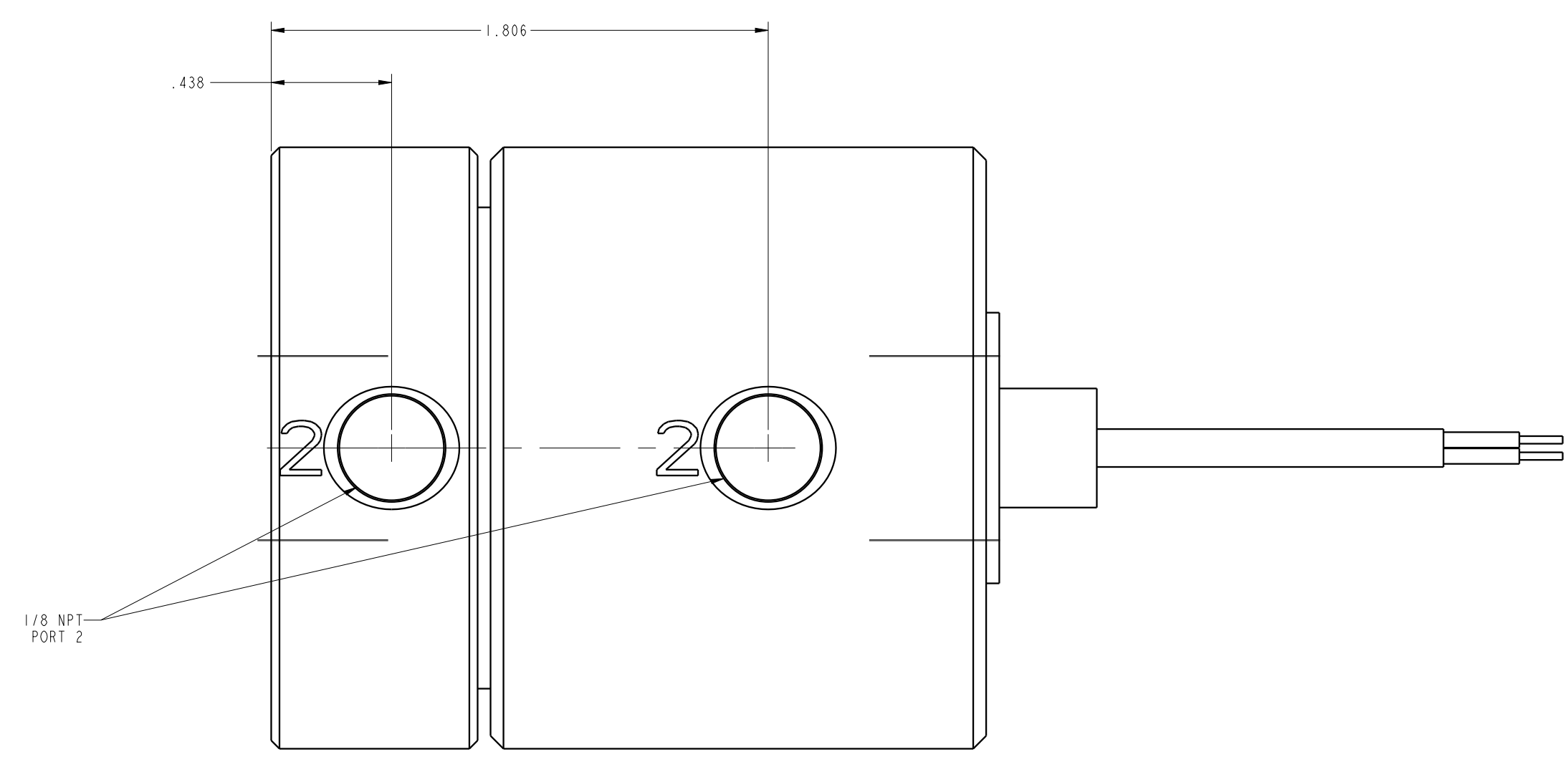
B

A

A



1LCP322420IES6A REV B ECN5033



CAD CONTROL DRAWING



VEKTEK, INC.
1334 E. SIXTH AVE. P.O. BOX 625
EMPORIA, KS. 66801 U.S.A.

B	5033	RELEASE	JDW	02/17/23	P322420IES6A	c	RU, 2 PASSAGE, 6 CIRCUIT
REV	IN ACCORDANCE WITH ECN	EFFECTIVE DATE	REVISED BY	DATE	REFERENCE MODEL	REF REV	
DRW BY:	K. ROEMER	DRAWING STATUS: Released			TOLERANCES DO NOT APPLY		SIZE
DATE:	10-17-06	PRODUCTION APPROVED FOR RELEASED STATUS ONLY			DIMENSIONS ARE NOMINAL		D

1LCP322420IES6A	REV B
-----------------	-------

1

2

3

4

SHEET 1 OF 1