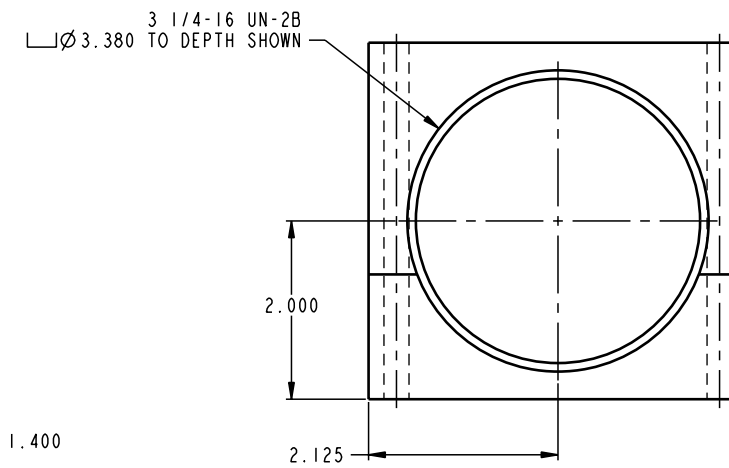
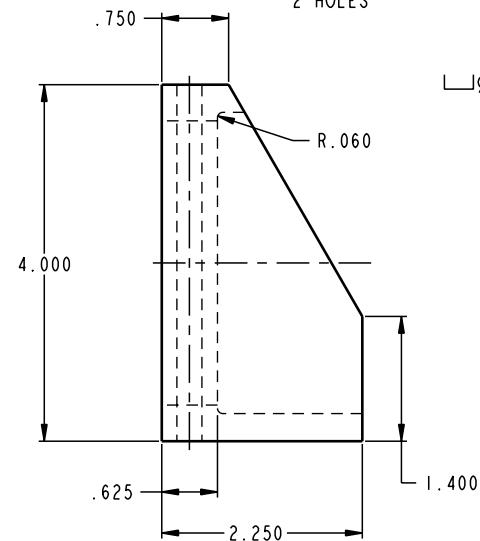
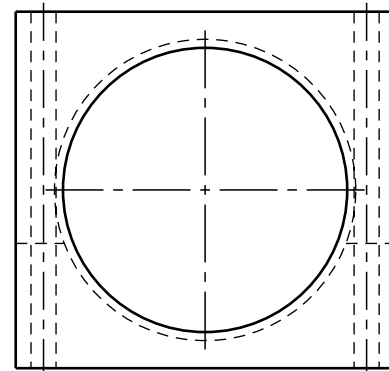


ILCP6403320 REV A ECN 1600



CAD CONTROL  
DRAWING



VEKTEK, INC.  
1334 E. SIXTH AVE. P.O. BOX 625  
EMPORIA, KS. 66801 U.S.A.

A	1600	RELEASE	K. ROEMER	11-16-06	P6403320	A	BRACKET, MOUNTING, 3 1/4-16
REV	IN ACCORDANCE WITH ECN	EFFECTIVE DATE	REVISED BY	DATE	REFERENCE MODEL	REF REV	''''
DRW BY:	K. ROEMER	DRAWING STATUS: <b>Released</b>			TOLERANCES DO NOT APPLY DIMENSIONS ARE NOMINAL		SIZE D
DATE:	11-16-06	PRODUCTION APPROVED FOR RELEASED STATUS ONLY			ILCP6403320		REV A

FORM FEG036, Rev. A

SHEET 1 OF 1