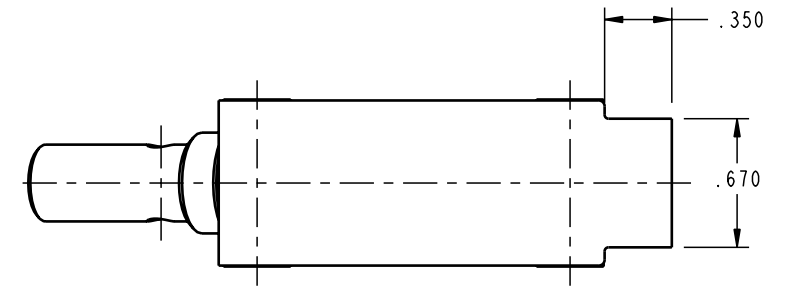


ILCP7002001 REV B ECN1588



CAD CONTROL DRAWING			
		VEKTEK, INC. 1334 E. SIXTH AVE. P.O. BOX 625 EMPORIA, KS. 66801 U.S.A.	
B	1588	RELEASE	K. ROEMER
REV	IN ACCORDANCE WITH ECN	EFFECTIVE DATE	REVISED BY
DRW BY:	K. ROEMER	DATE	11-02-06
DATE:	11-02-06	DRAWING STATUS: Released	
		PRODUCTION APPROVED FOR RELEASED STATUS ONLY	
		REFERENCE MODEL	REF REV
		TOLERANCES DO NOT APPLY	SIZE
		DIMENSIONS ARE NOMINAL	B
		VALVE, CONTROL, FLOW, 1/4 NPT	ILCP7002001
		FORM FEG036, Rev. A	REV B