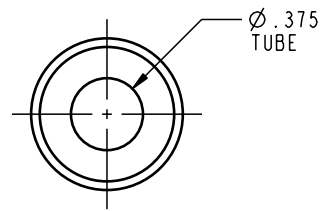
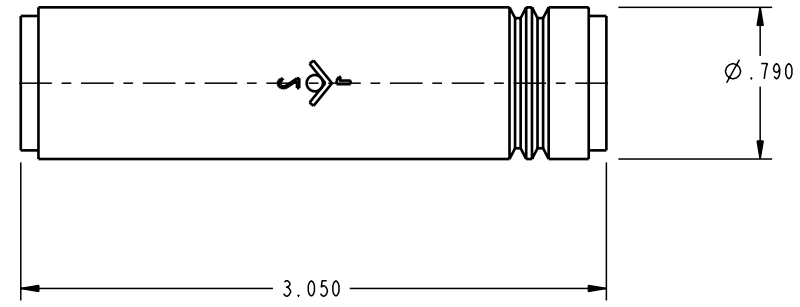


ILCP7003001 REV B ECN1601



**CAD CONTROL  
DRAWING**



VEKTEK, INC.  
1334 E. SIXTH AVE. P.O. BOX 625  
EMPORIA, KS. 66801 U.S.A.

B	1601	RELEASE	K. ROEMER	11-17-06	P7003001	B	
REV	IN ACCORDANCE WITH ECN	EFFECTIVE DATE	REVISED BY	DATE	REFERENCE MODEL	REF REV	
DRW BY:	K. ROEMER	<b>DRAWING STATUS: Released</b>				TOLERANCES DO NOT APPLY	SIZE
DATE:	11-17-06	PRODUCTION APPROVED FOR RELEASED STATUS ONLY				DIMENSIONS ARE NOMINAL	B

VLV,CHECK,3/8 TBG,230 PSI,PNEU

ILCP7003001 REV B

FORM FEG036, Rev. A

SHEET 1 OF 1