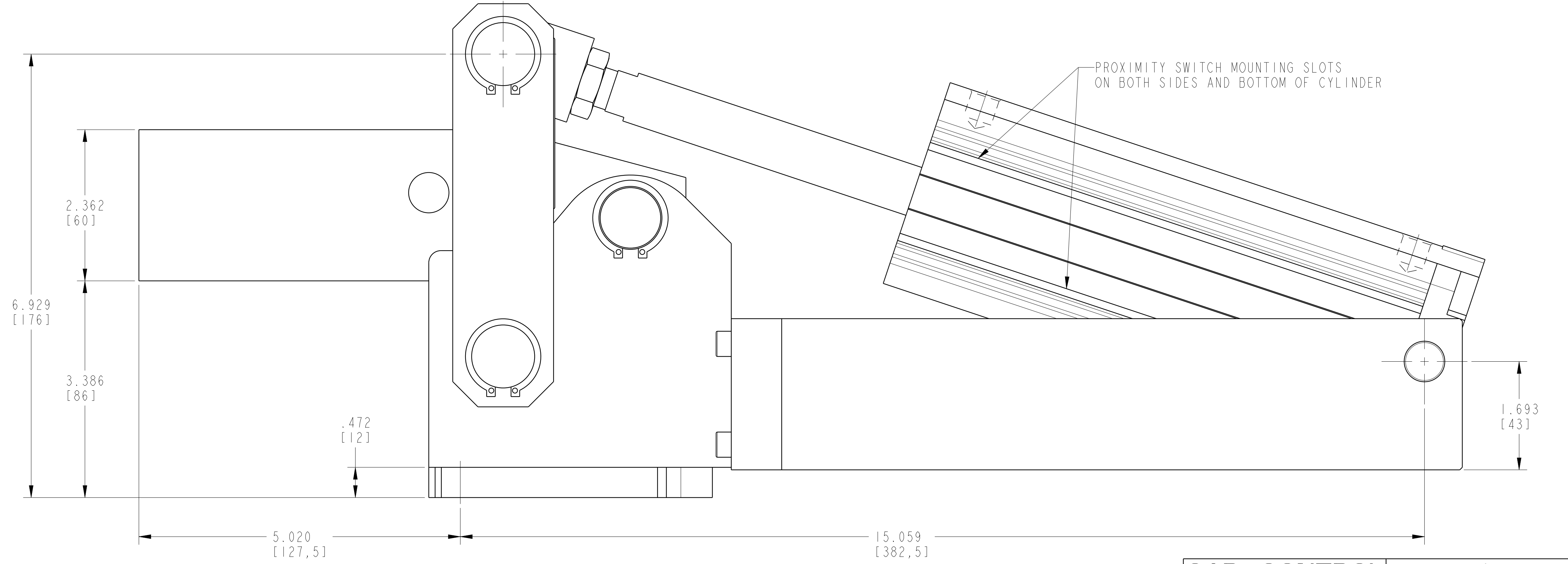
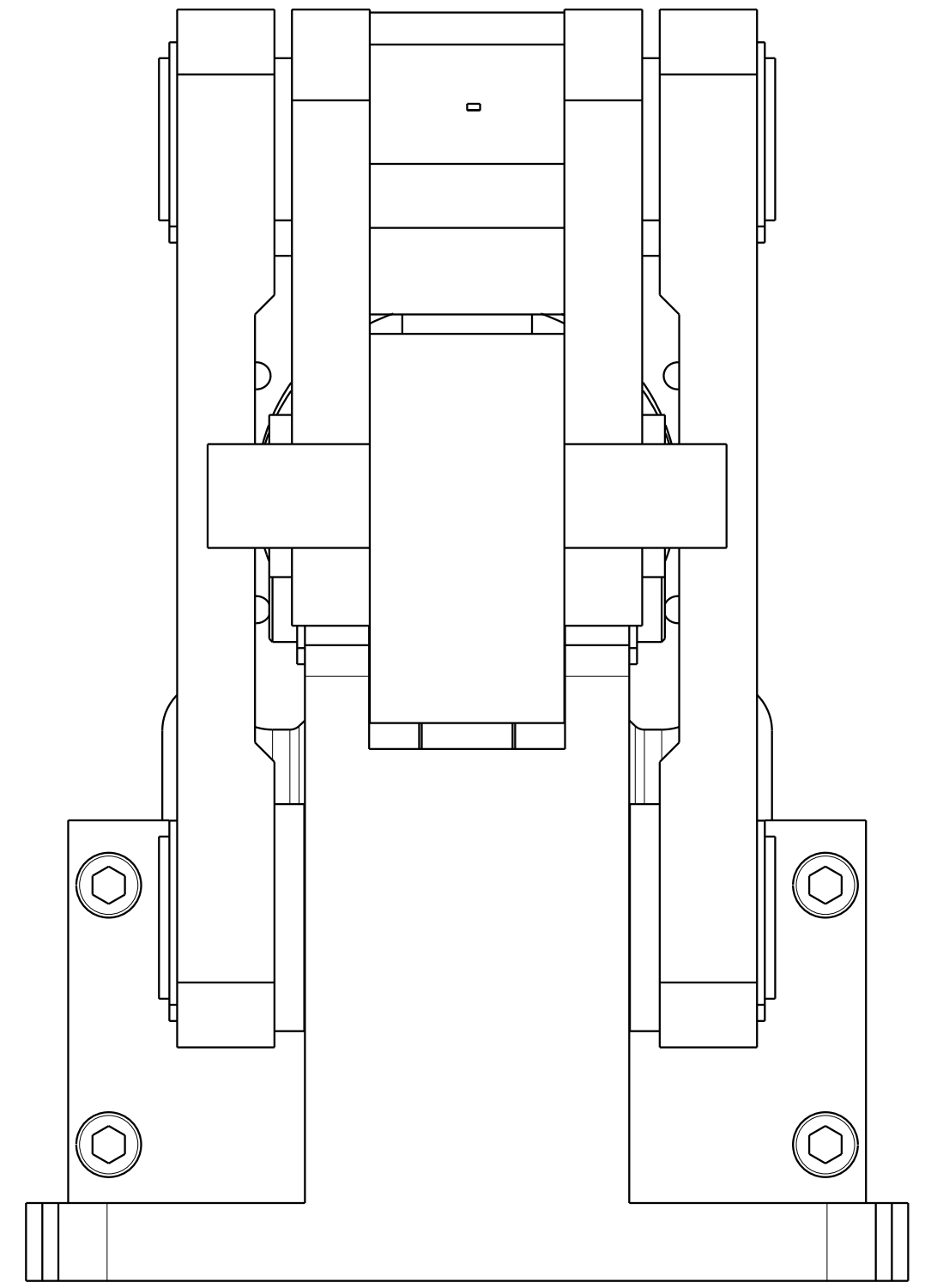
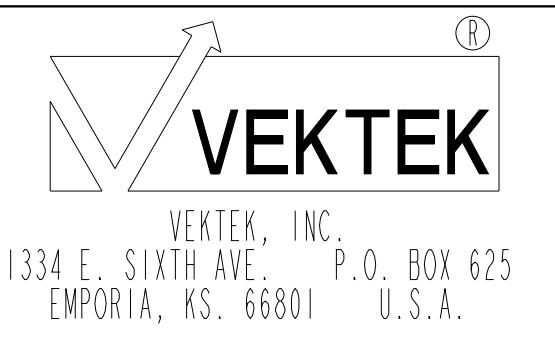


ILCP92221 REV E ECN5219



**CAD CONTROL
DRAWING**



E	5219	RELEASE	RLK	12/14/23	P92221	B	CLAMP, TOGGLE, HD, HORZ, 8
REV	IN ACCORDANCE WITH ECN	EFFECTIVE DATE	REVISED BY	DATE	REFERENCE MODEL	REF REV	
DRW BY:	DRAWING STATUS: Released			TOLERANCES DO NOT APPLY		SIZE	REV
DATE:	PRODUCTION APPROVED FOR RELEASED STATUS ONLY			DIMENSIONS ARE NOMINAL		D	E

ILCP92221
FORM FEG036, Rev. B