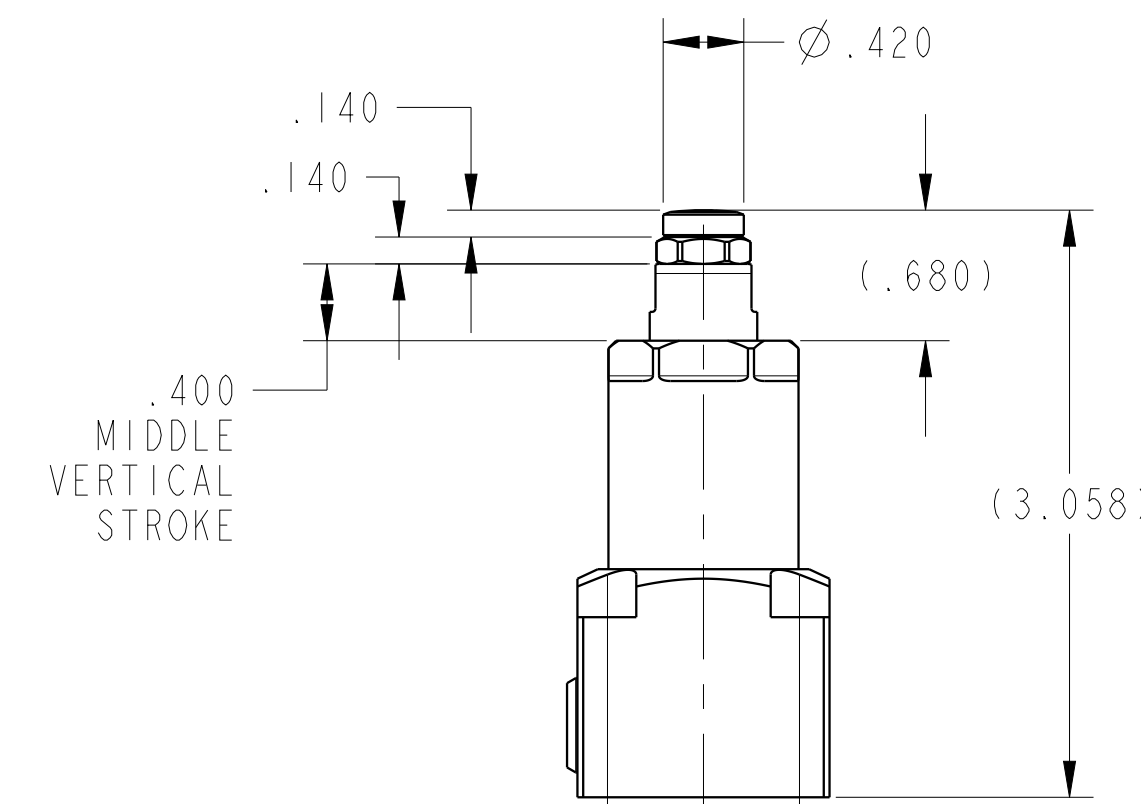
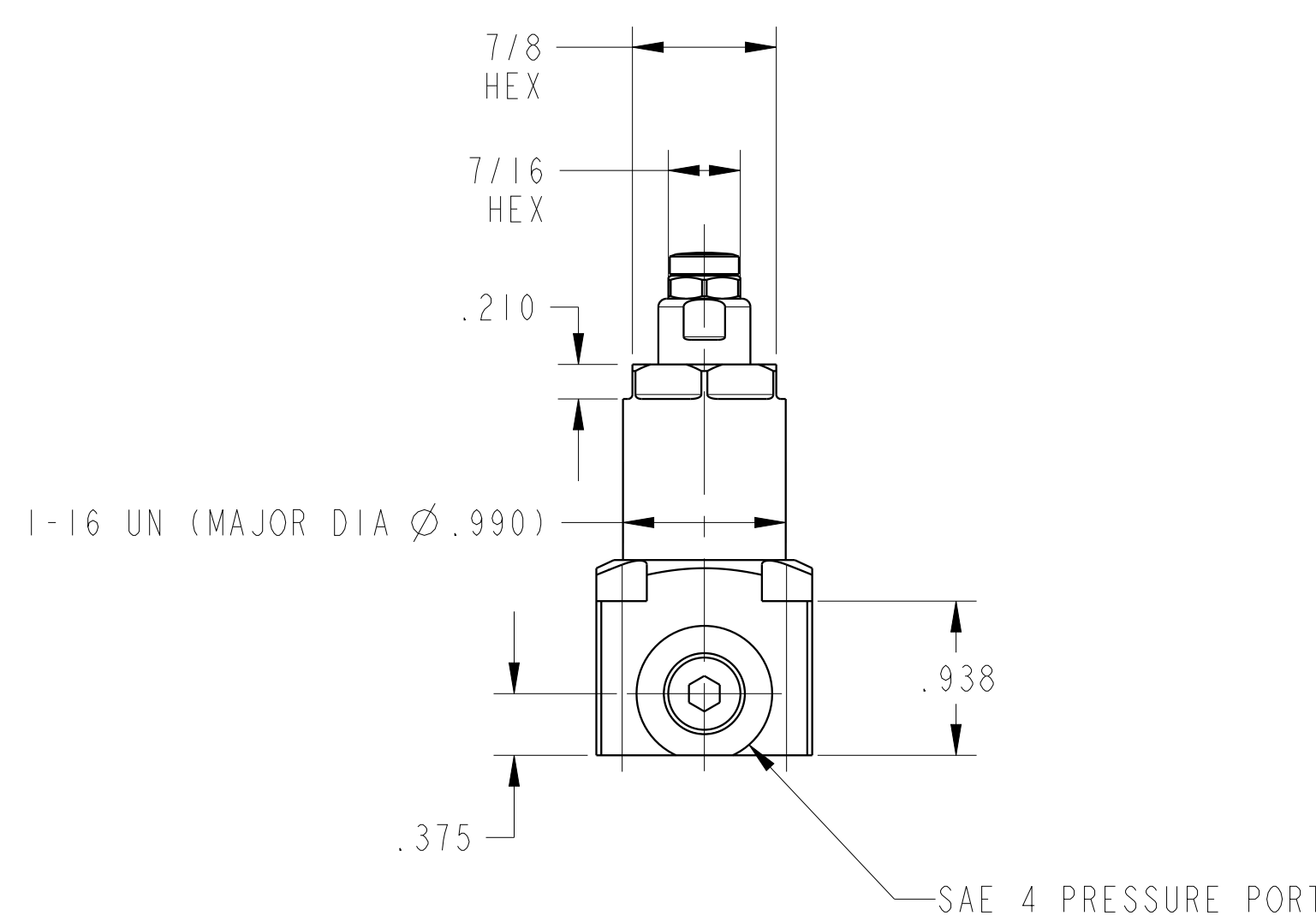
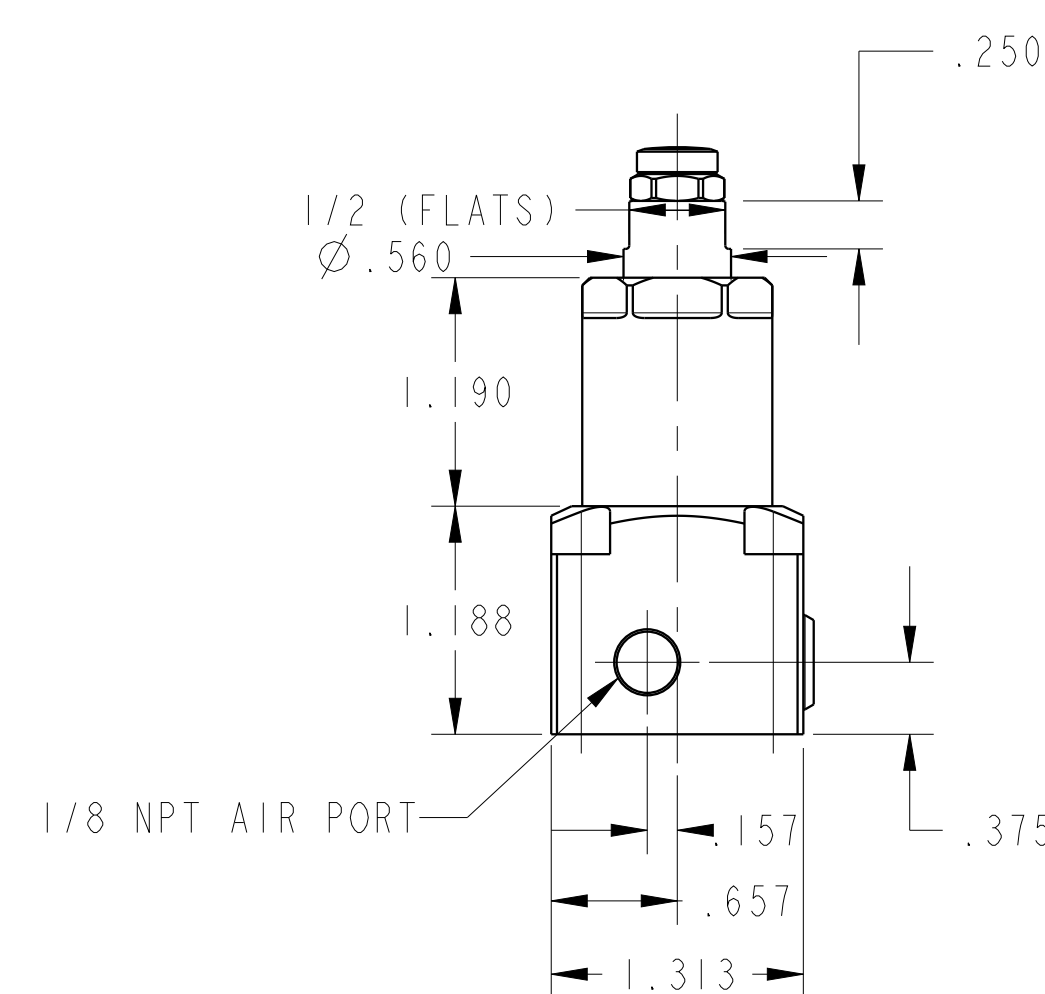
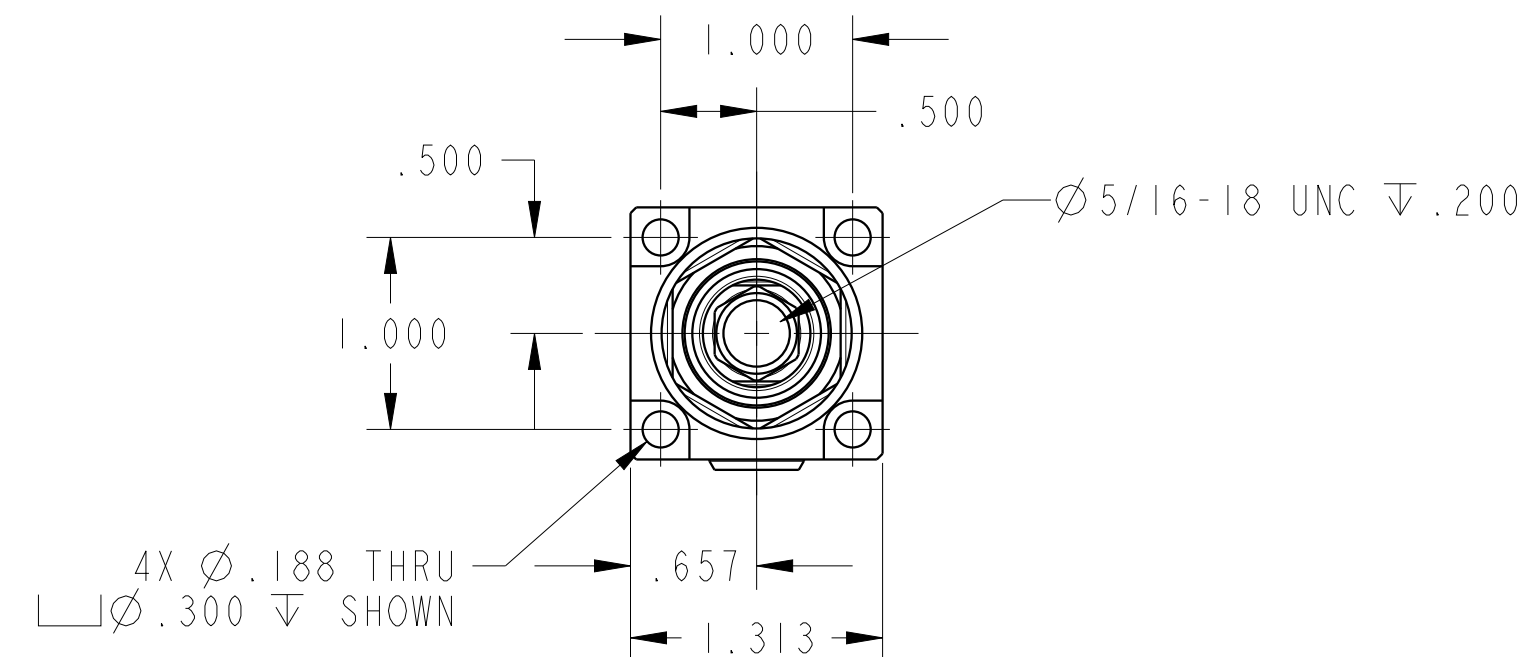
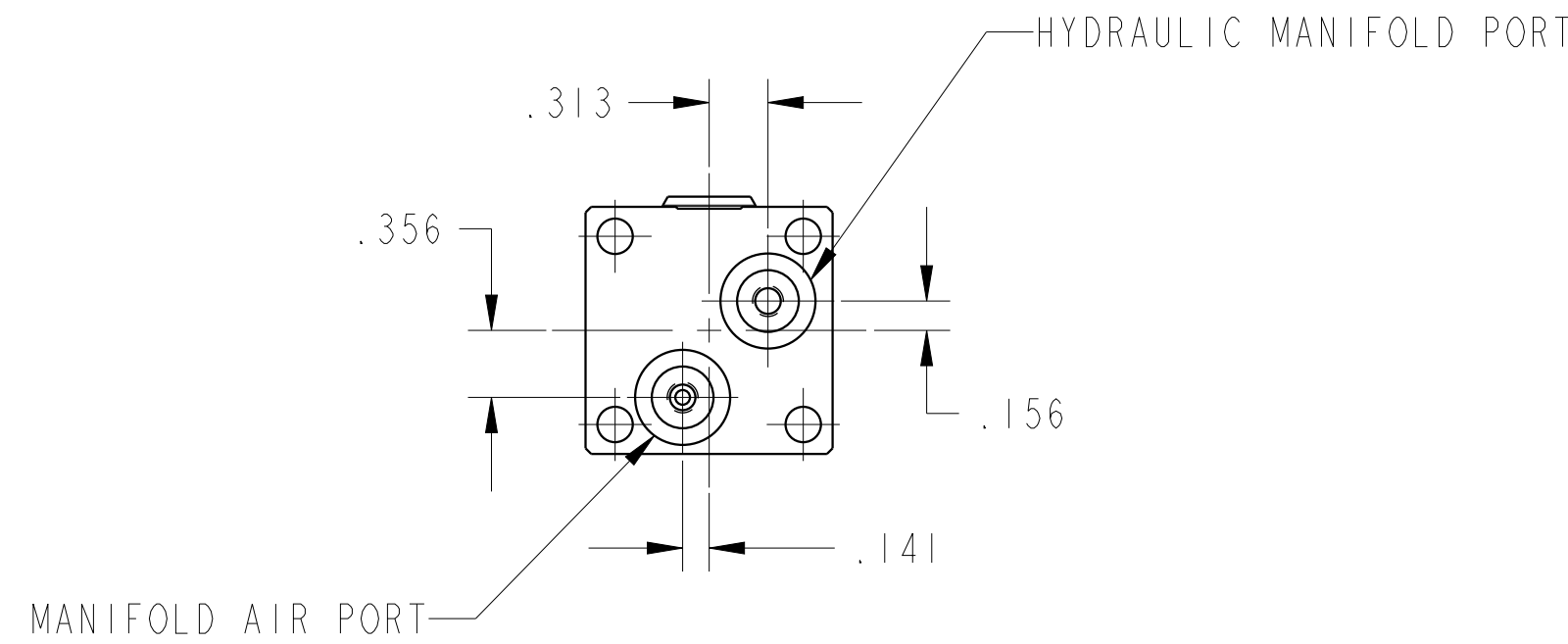


ILC10080620PS REV C ECN4096

SCALE 1.000



SEE IS5003 FOR PART POSITION SENSOR SETUP



CAD CONTROL DRAWING		VEKTEK, INC. 1334 E. SIXTH AVE. P.O. BOX 625 EMPORIA, KS. 66801 U.S.A.	
		WS, FA, BM, HC, 2000, PPS	REV C

C	4096	RELEASE	MJUST	3/5/20	10080620PS	B	WS, FA, BM, HC, 2000, PPS
REV	IN ACCORDANCE WITH ECN	EFFECTIVE DATE	REVISED BY	DATE	REFERENCE MODEL	REF REV	
DRW BY:	BCD	DRAWING STATUS: Released			TOLERANCES DO NOT APPLY		SIZE D
DATE:	30-Aug-18	PRODUCTION APPROVED FOR RELEASED STATUS ONLY			DIMENSIONS ARE NOMINAL		ILC10080620PS