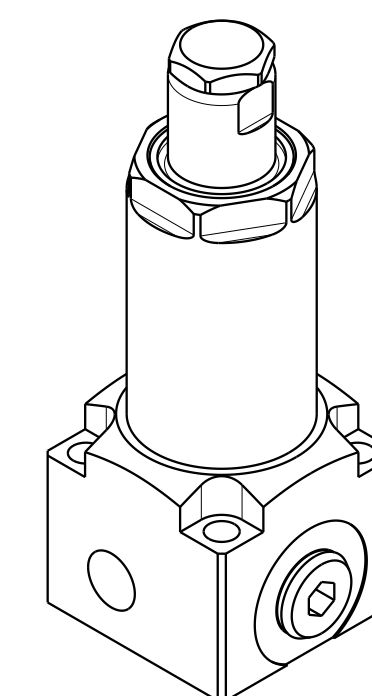


1

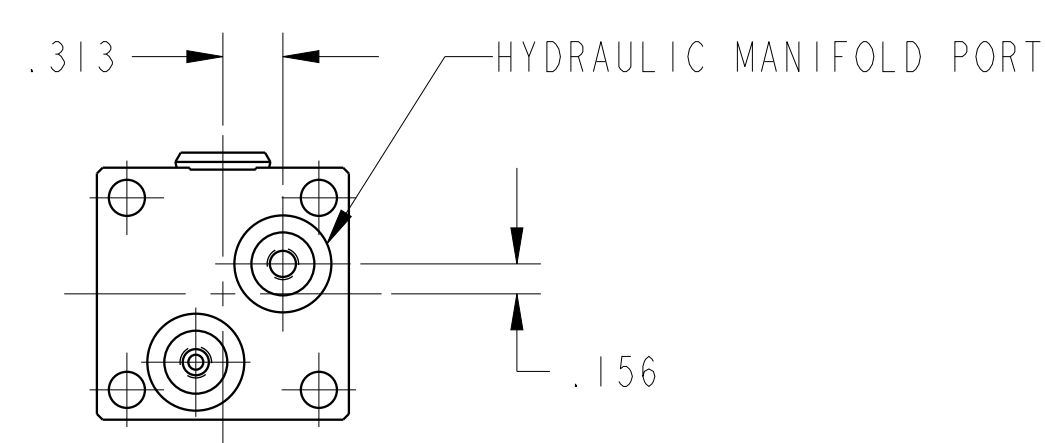
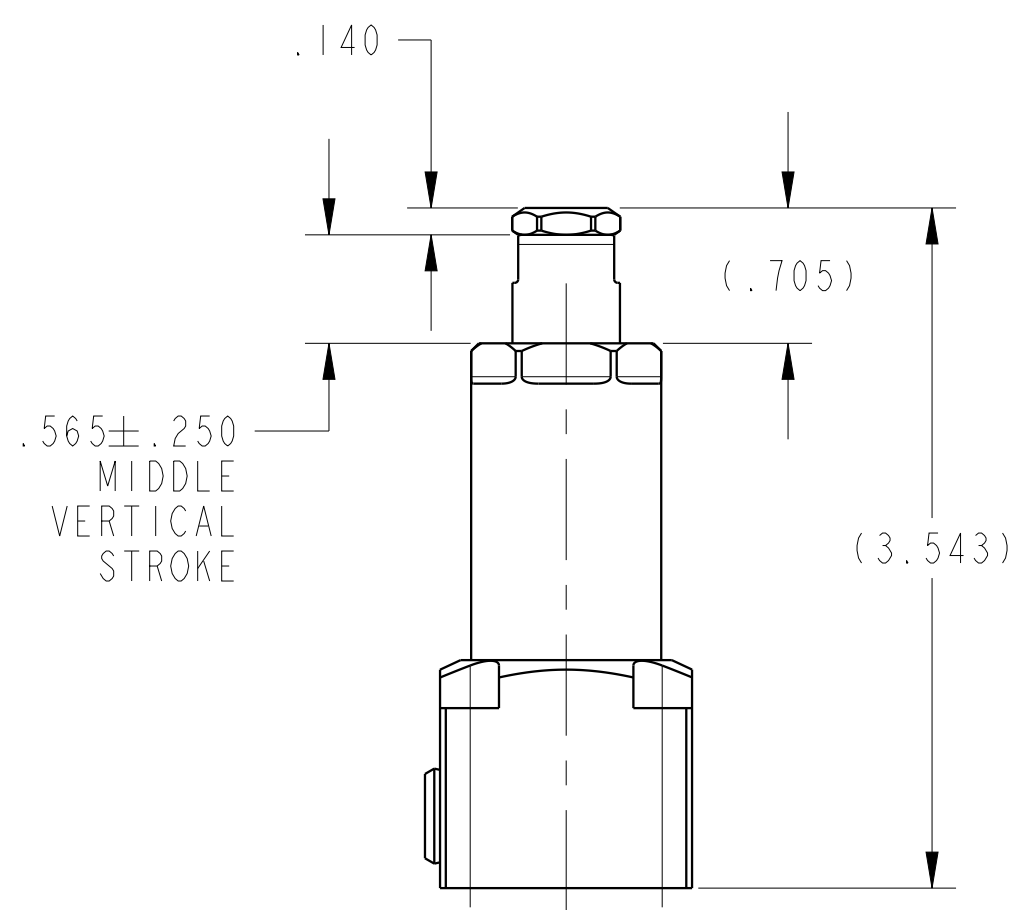
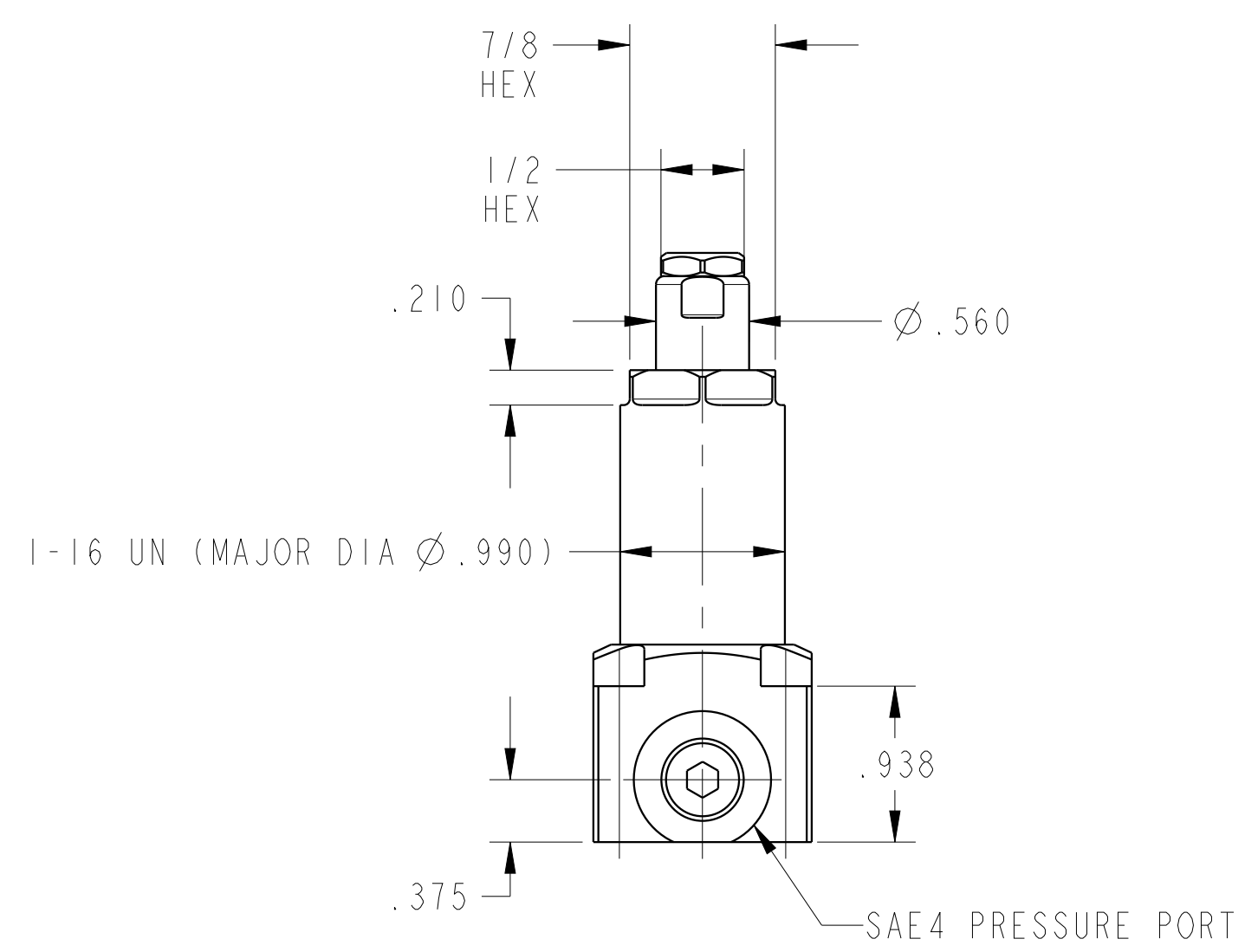
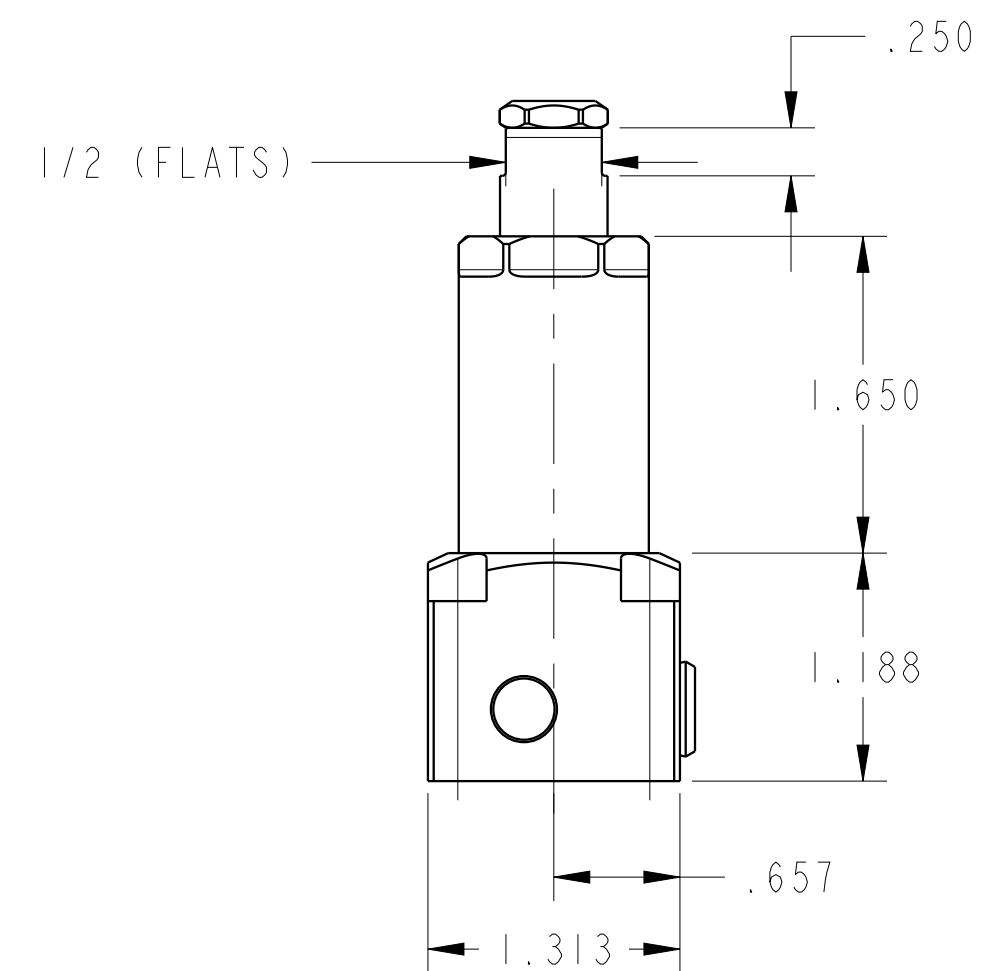
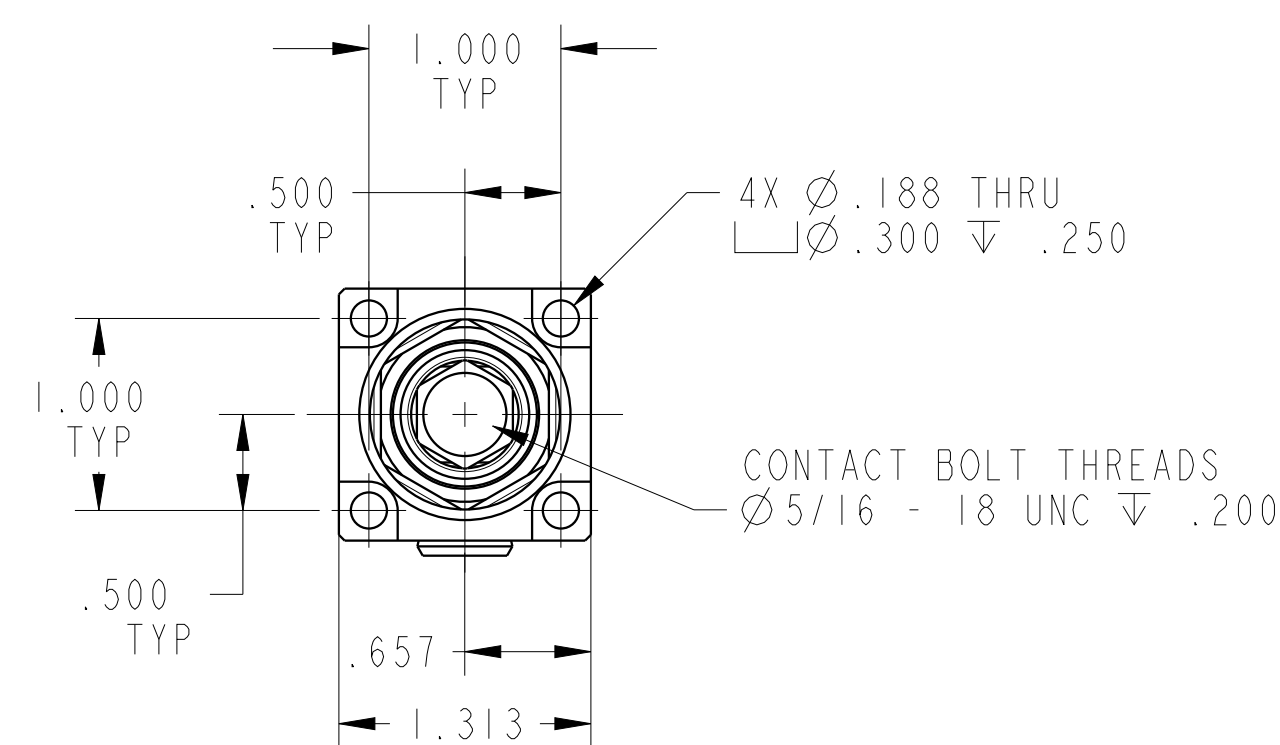
2

3

4



ILC10080626 REV A ECN3869



CAD CONTROL DRAWING		
	VEKTEK, INC. 1334 E. SIXTH AVE. P.O. BOX 625 EMPORIA, KS. 66801 U.S.A.	

A	3869	RELEASE	ALS	6/22/20	10080626	A	WS, FA, BM, HC, 2000, LS
REV	IN ACCORDANCE WITH ECN	EFFECTIVE DATE	REVISED BY	DATE	REFERENCE MODEL	REF REV	
DRW BY:	ALS	DRAWING STATUS: <b>Released</b>			TOLERANCES DO NOT APPLY		SIZE
DATE:	3/2/20	PRODUCTION APPROVED FOR RELEASED STATUS ONLY			DIMENSIONS ARE NOMINAL		D
					ILC10080626		REV A
							FORM FEG036, Rev. B

1

2

3

4

SHEET 1 OF 1