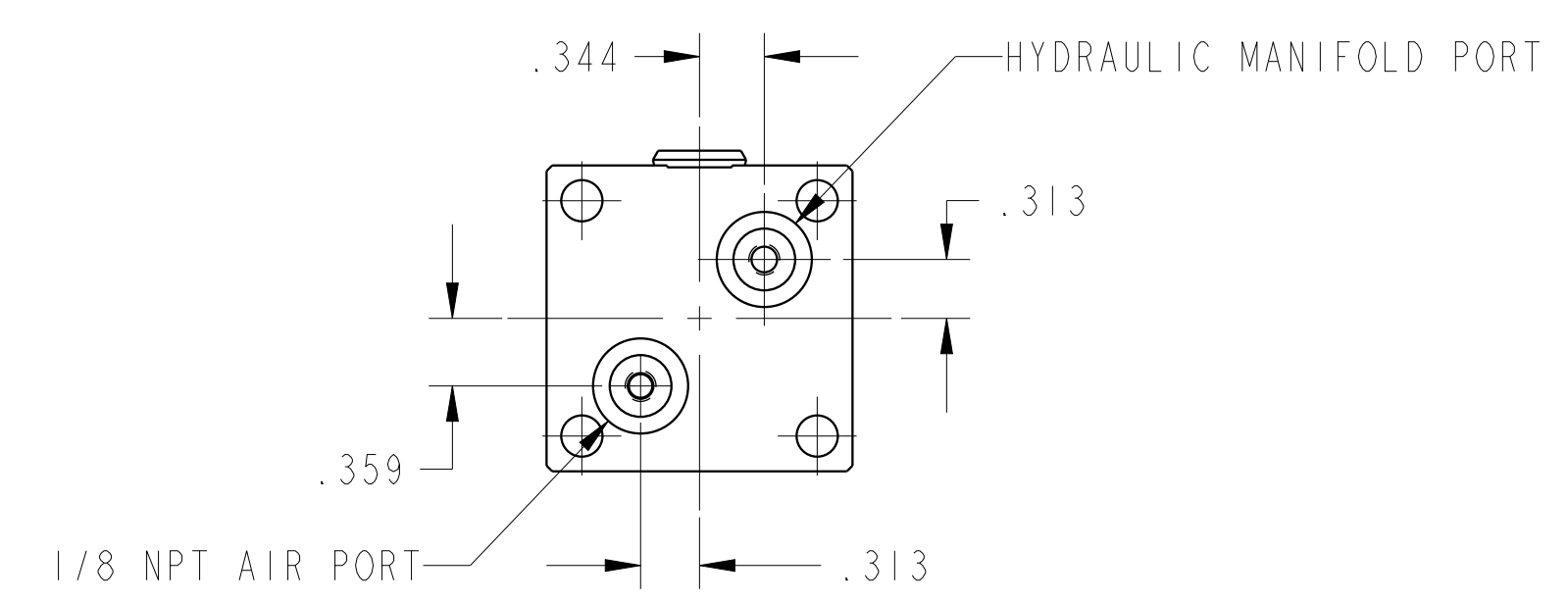
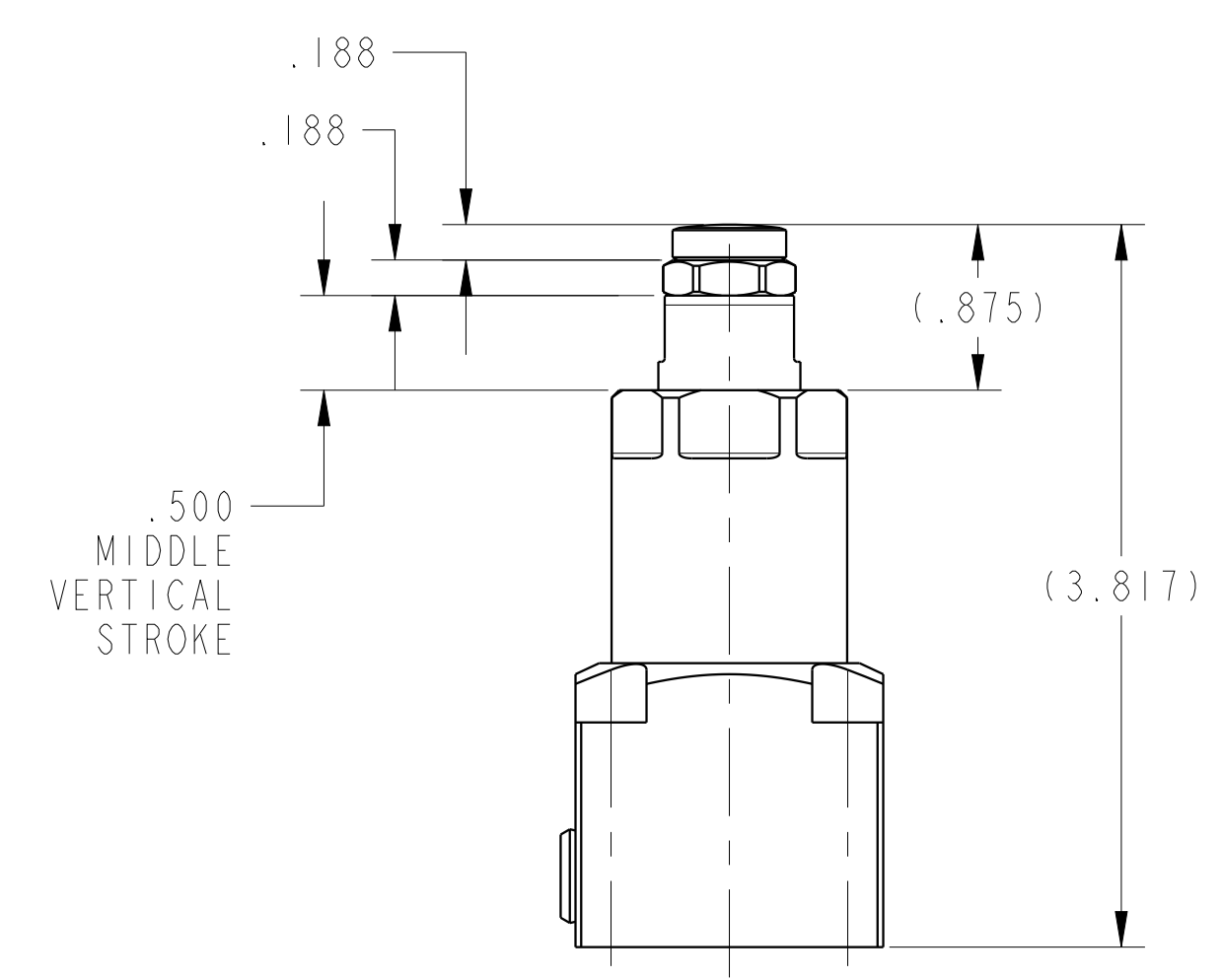
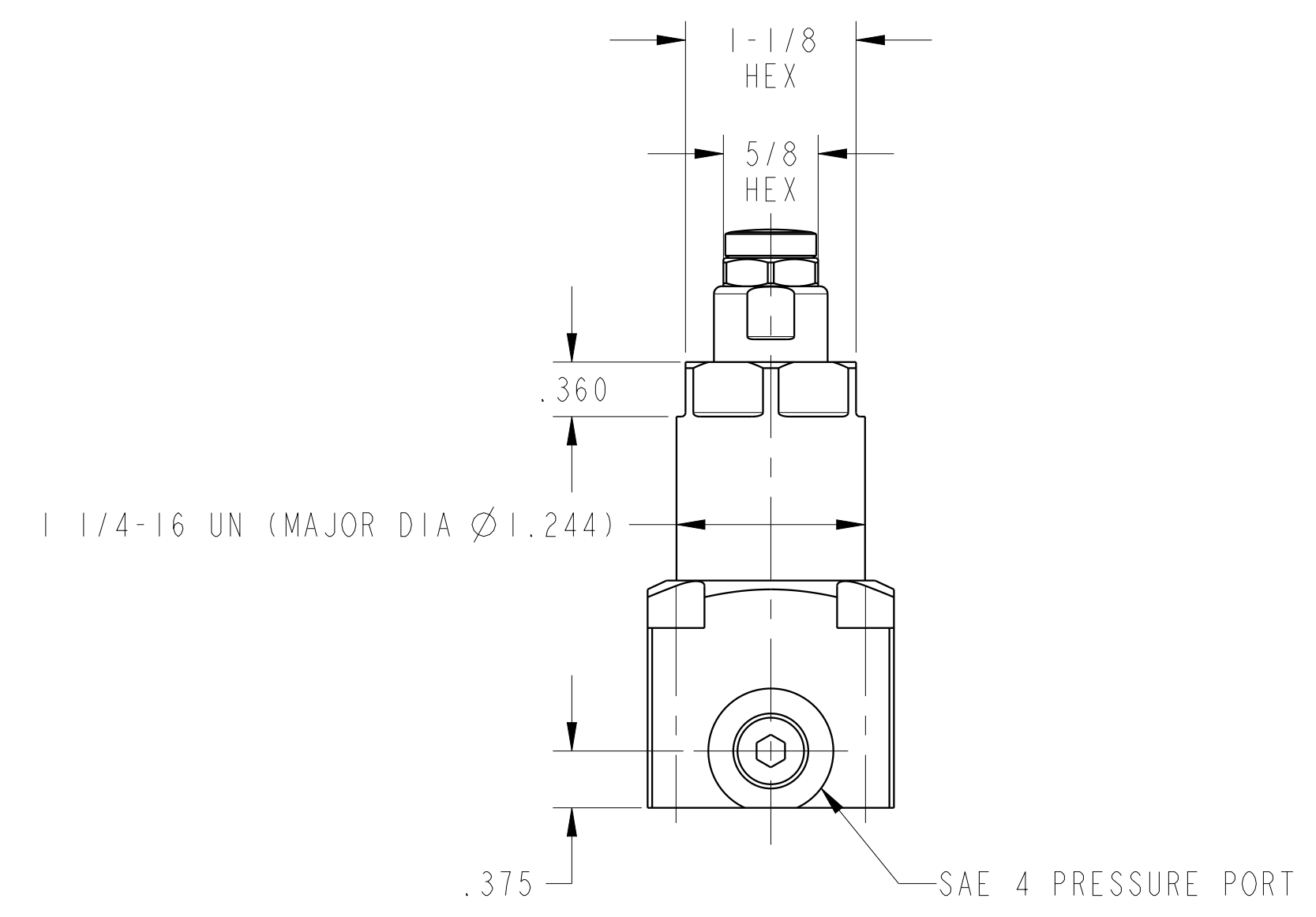
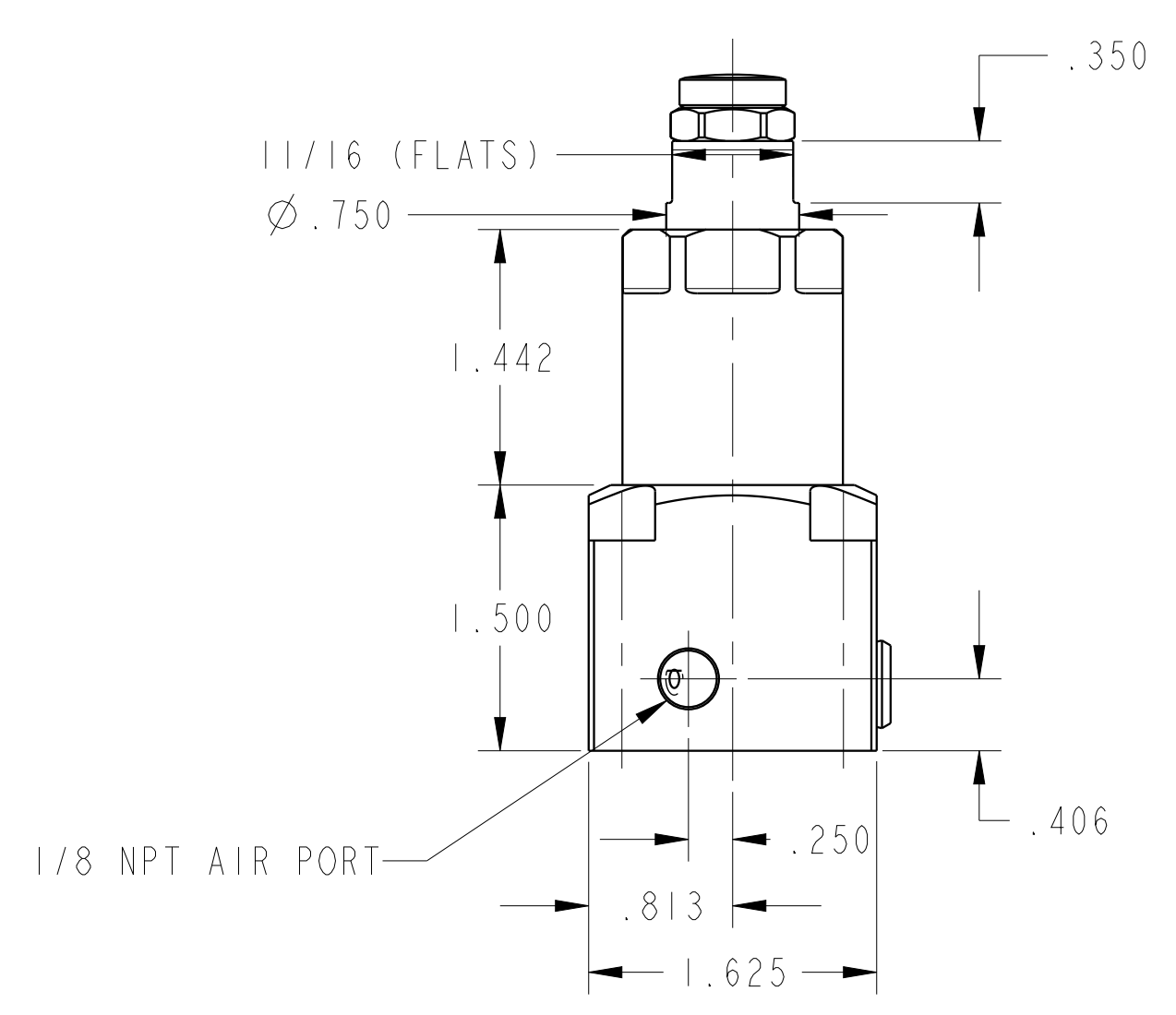


ILC10080820PS REV C ECN4096

SCALE 1.000

SEE IS5003 FOR PART POSITION SENSOR SETUP



<b>CAD CONTROL DRAWING</b>			
		VEKTEK, INC. 1334 E. SIXTH AVE. P.O. BOX 625 EMPORIA, KS. 66801 U.S.A.	

C	4096	RELEASE	MJUST	3/9/20	10080820PS	B	WS, FA, BM, HC, 4000, PPS
REV	IN ACCORDANCE WITH ECN	EFFECTIVE DATE	REVISED BY	DATE	REFERENCE MODEL	REF REV	
DRW BY:	BCD	<b>DRAWING STATUS: Released</b>			TOLERANCES DO NOT APPLY DIMENSIONS ARE NOMINAL		SIZE D
DATE:	30-Aug-18	PRODUCTION APPROVED FOR RELEASED STATUS ONLY			ILC10080820PS		REV C