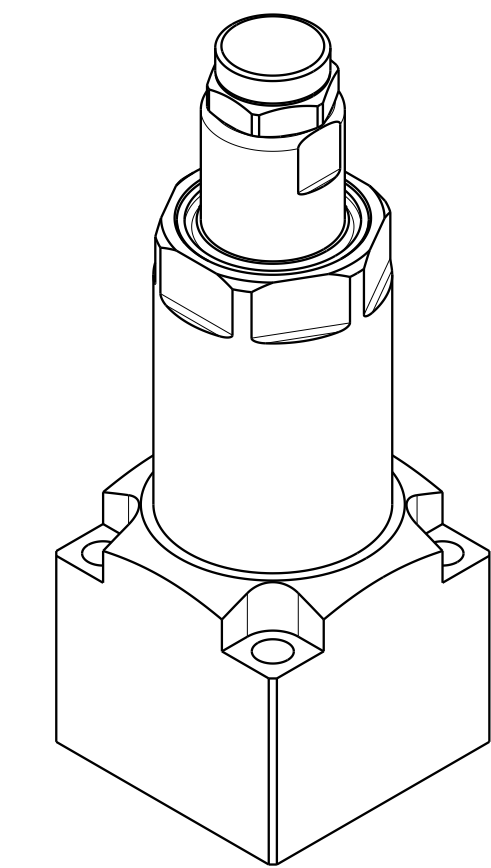
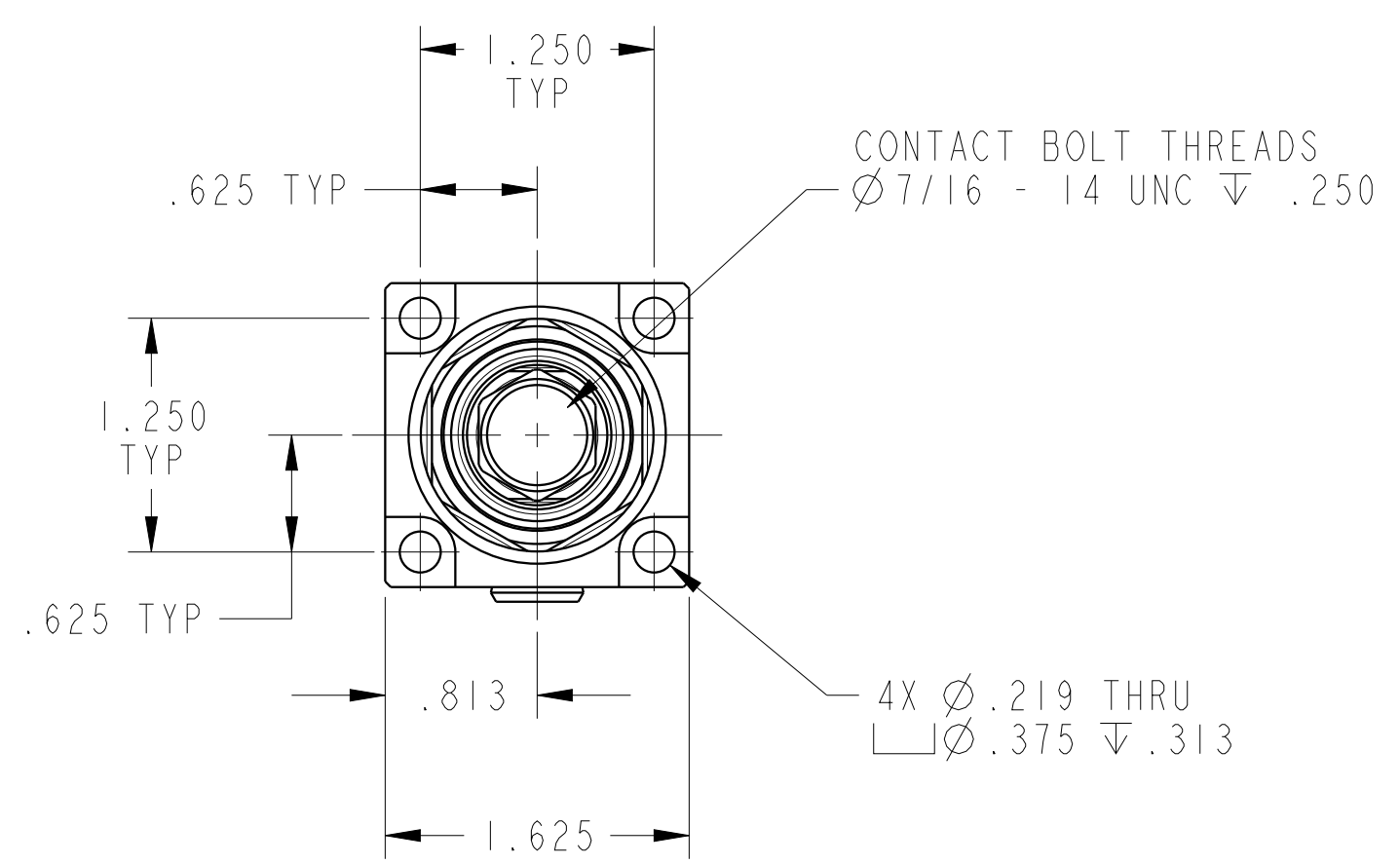


1

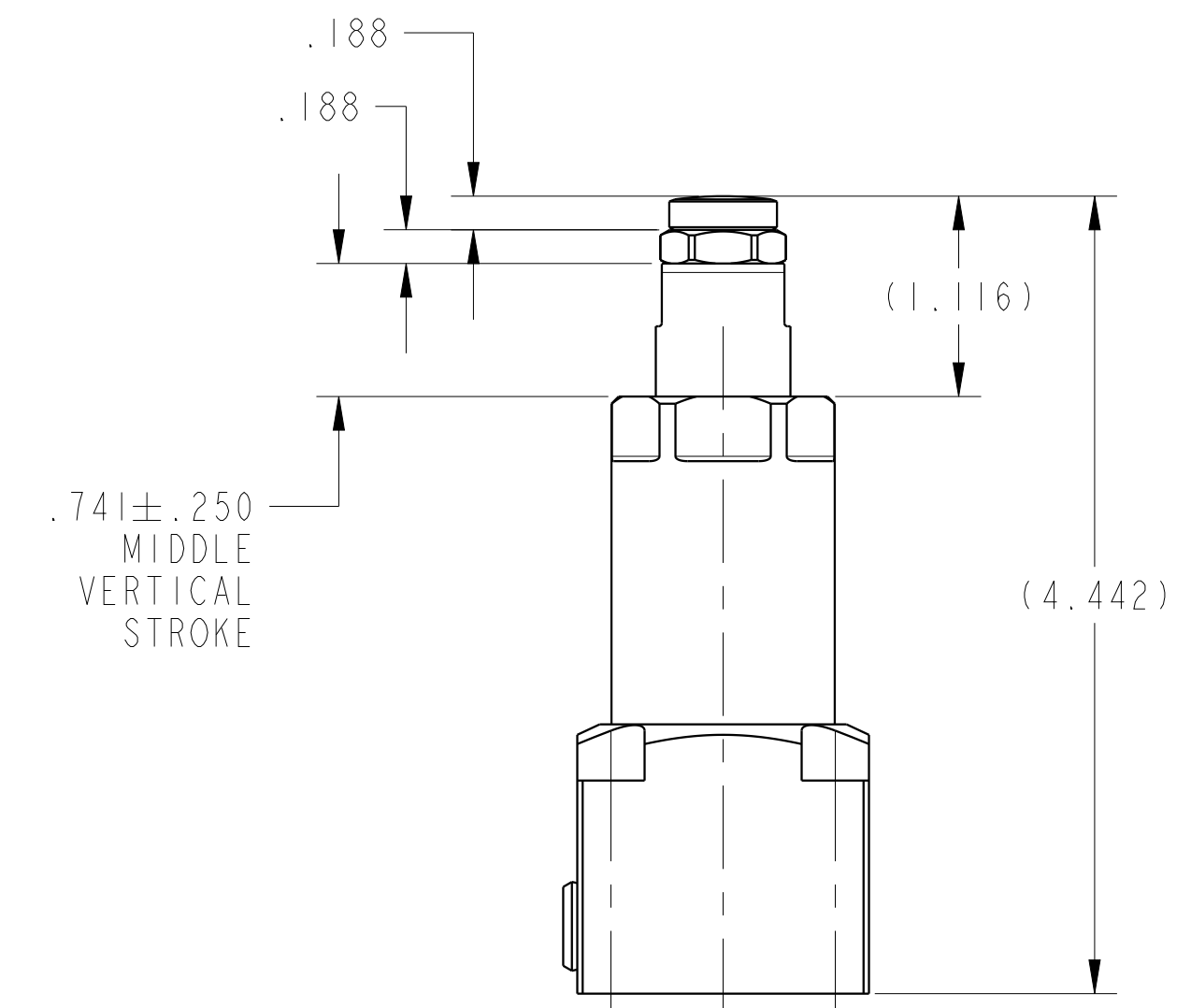
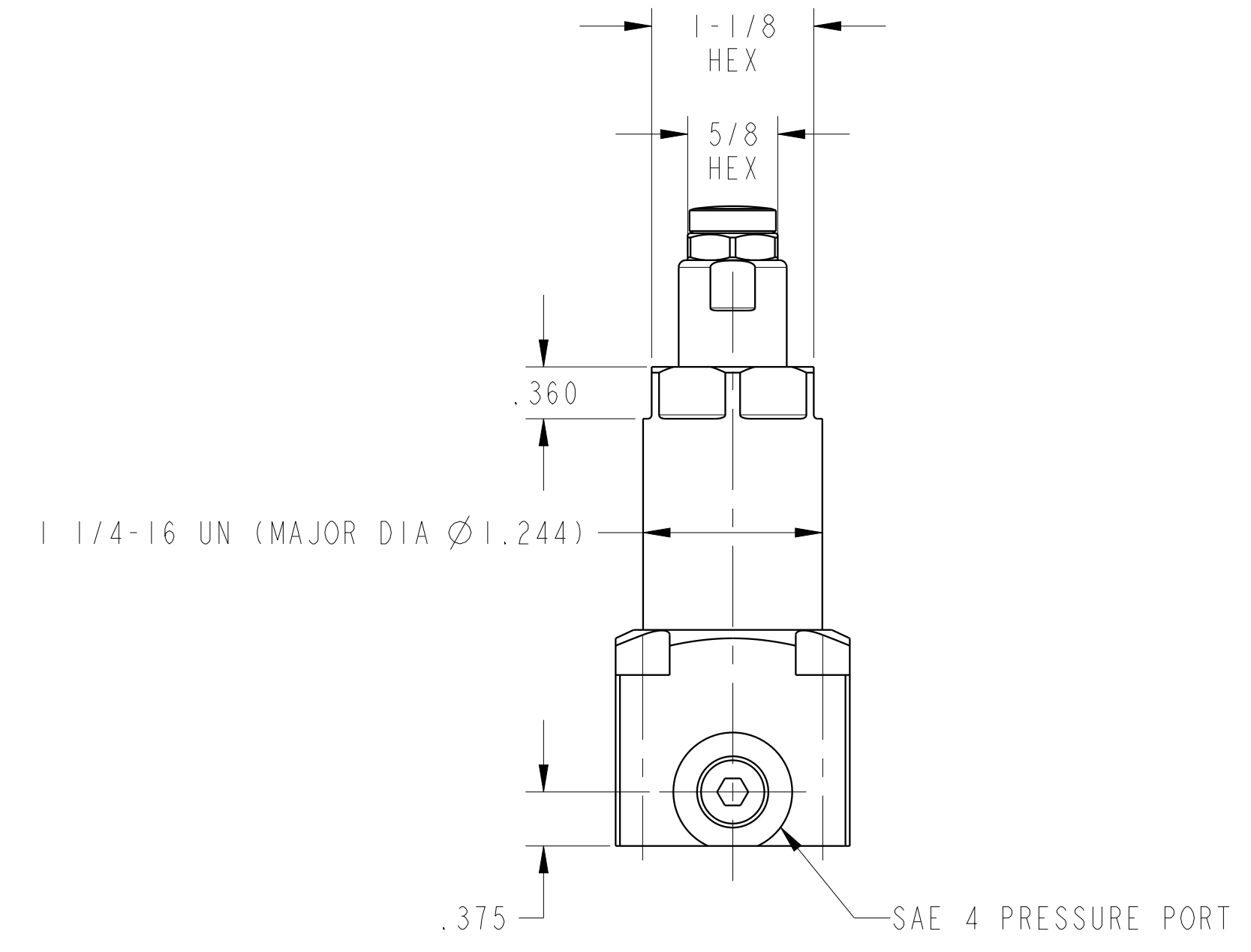
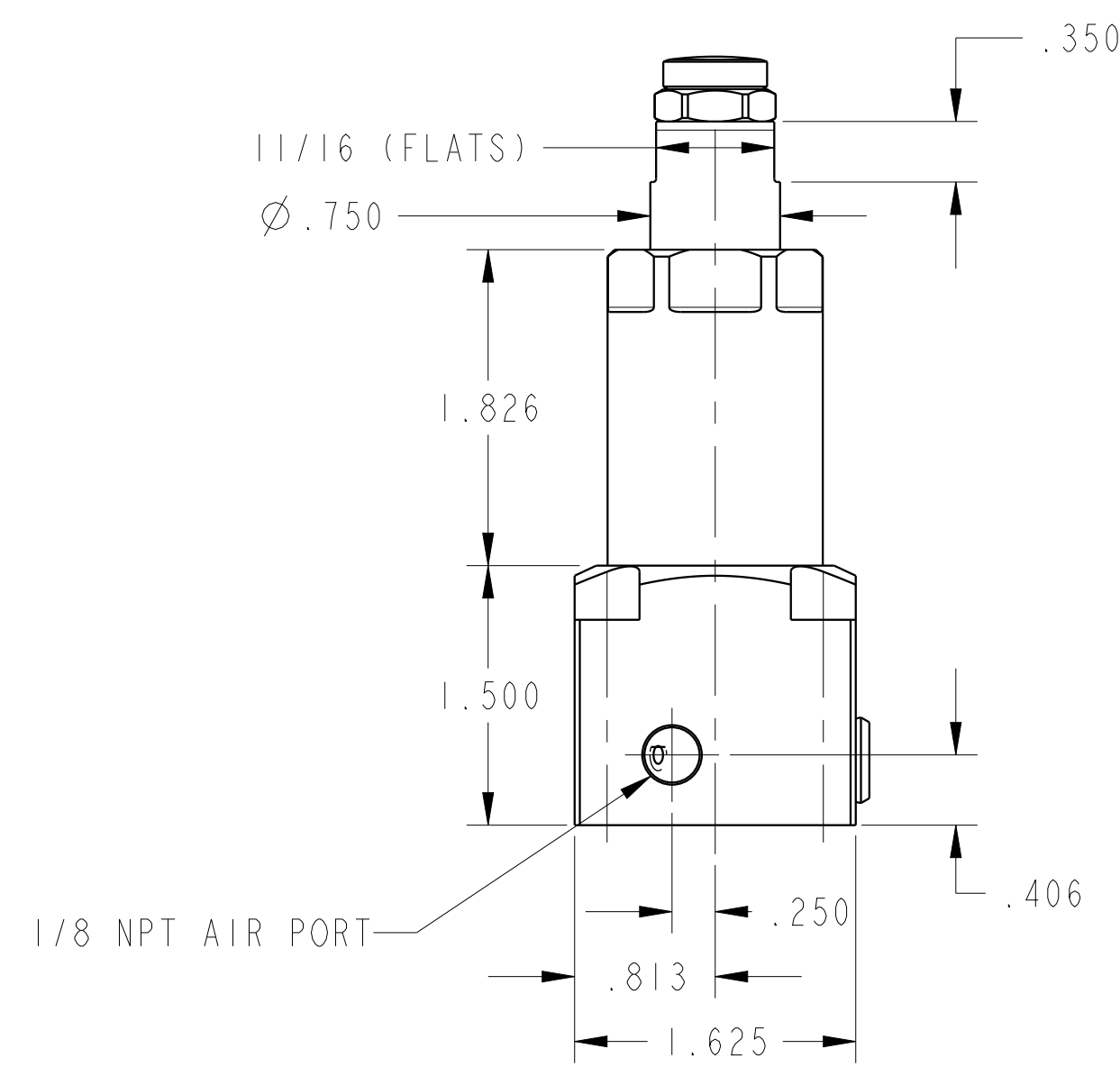
2

3

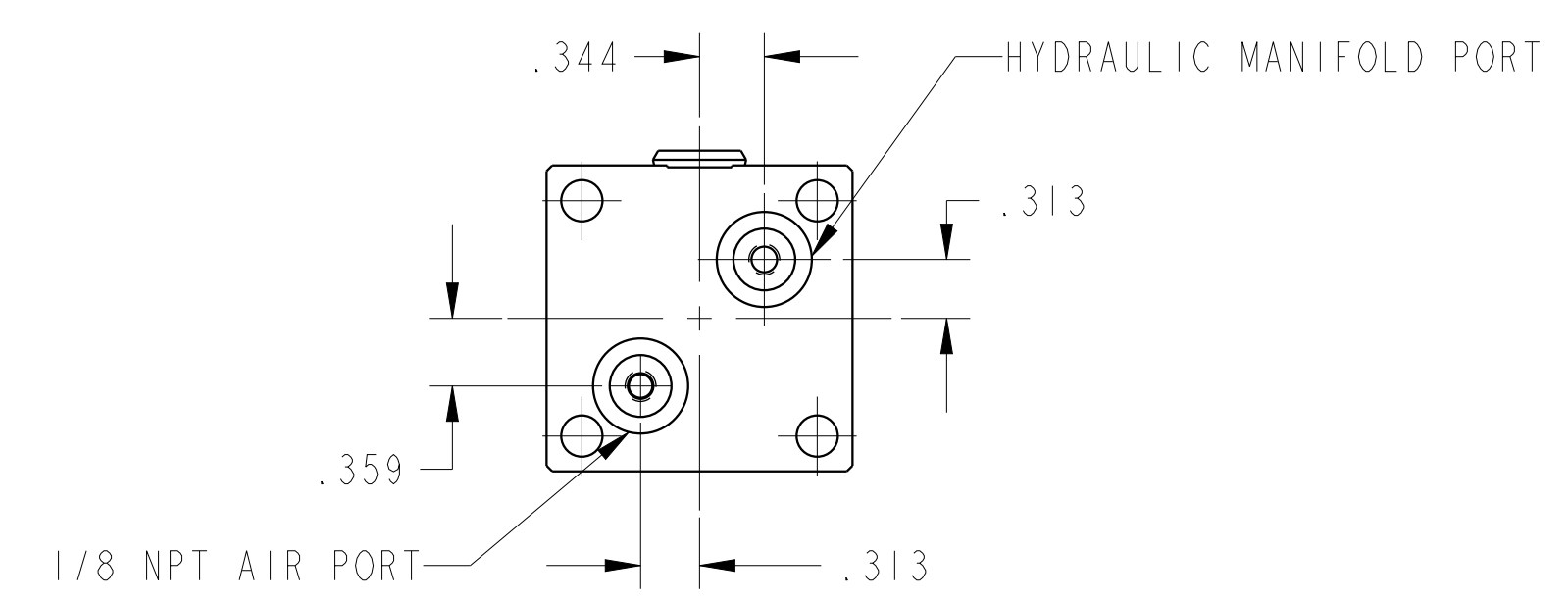
4



ILC10080826PS REV A ECN3869



SEE IS5003 FOR PART POSITION SENSOR SETUP



CAD CONTROL DRAWING		
	VEKTEK, INC. 1334 E. SIXTH AVE. P.O. BOX 625 EMPORIA, KS. 66801 U.S.A.	

A	3869	RELEASE	ALS	6/22/20	10080826PS	A	WS, FA, BM, HC, 4000, PPS, LS
REV	IN ACCORDANCE WITH ECN	EFFECTIVE DATE	REVISED BY	DATE	REFERENCE MODEL	REF REV	
DRW BY:	ALS	DRAWING STATUS: Released			TOLERANCES DO NOT APPLY DIMENSIONS ARE NOMINAL		SIZE D
DATE:	3/2/20	PRODUCTION APPROVED FOR RELEASED STATUS ONLY			I L C 1 0 0 8 0 8 2 6 P S		REV A

1

2

3

4

SHEET 1 OF 1