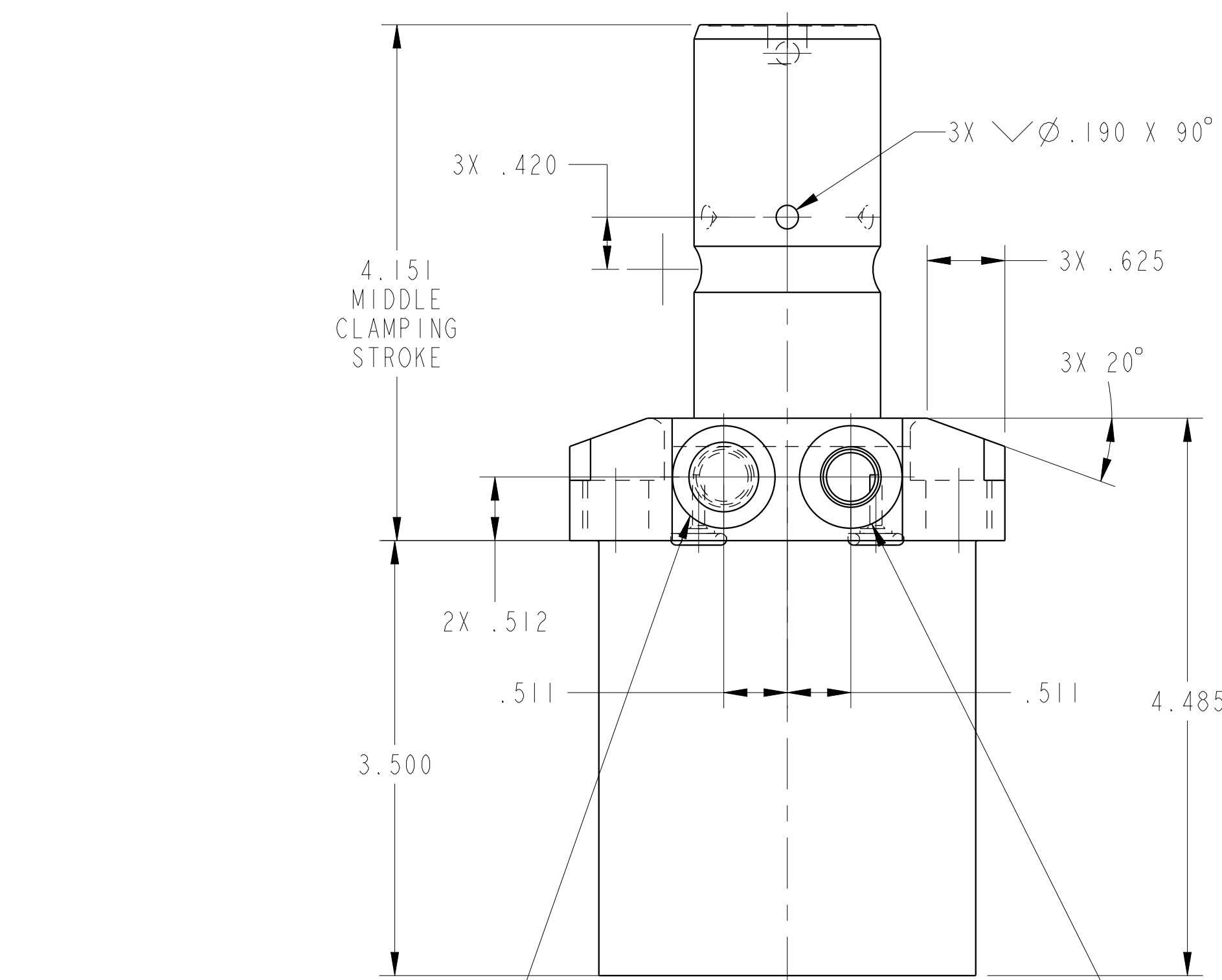
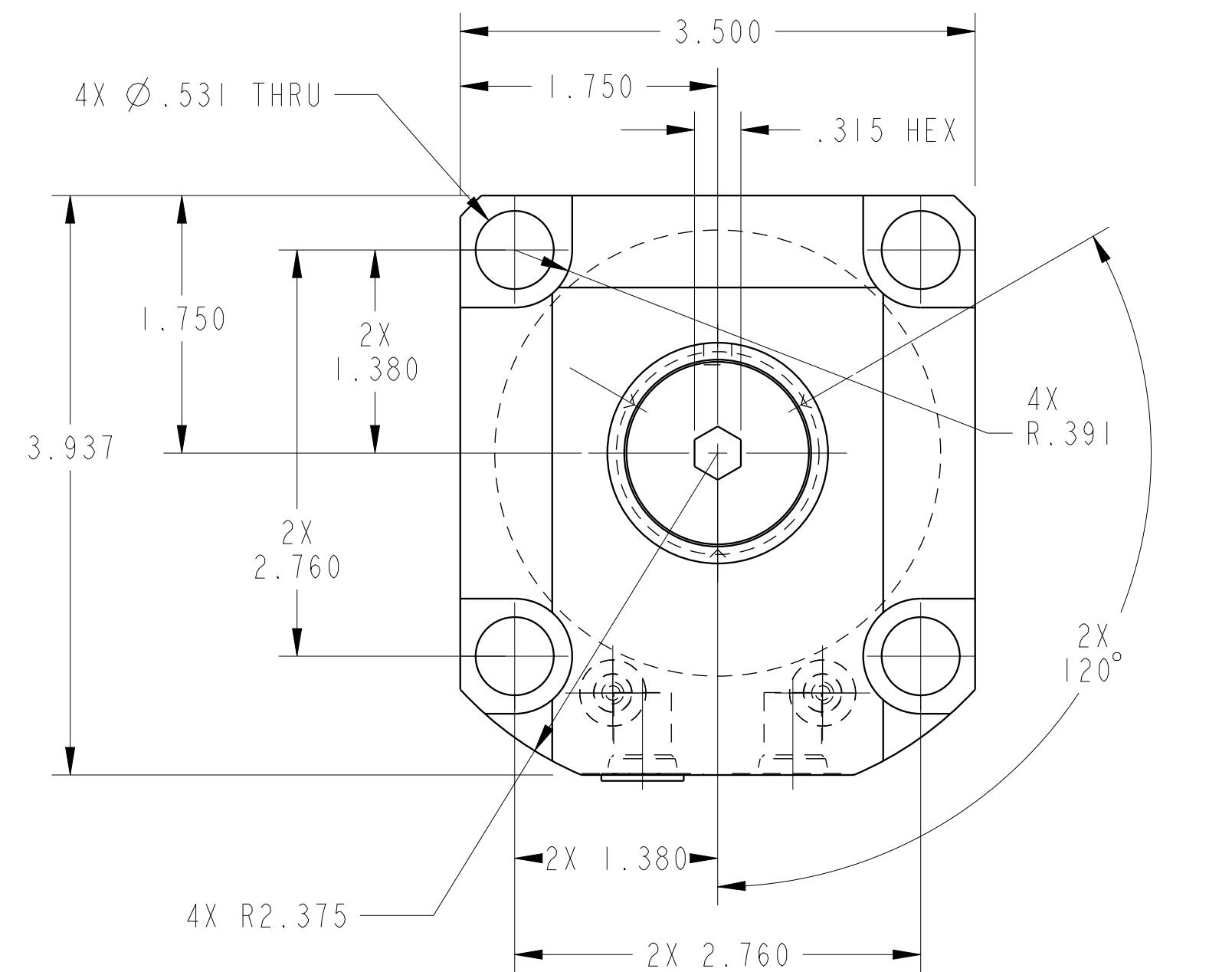
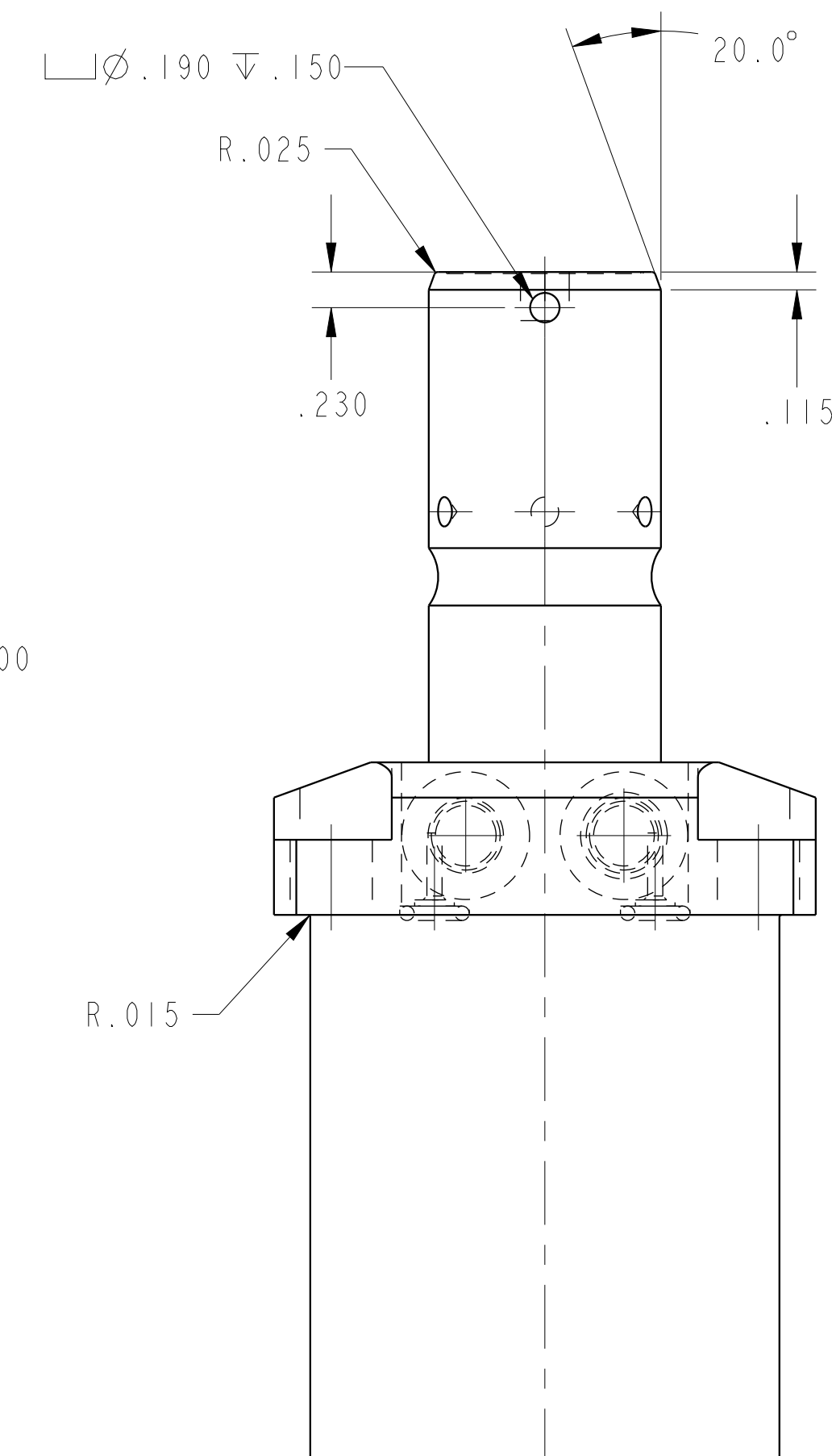
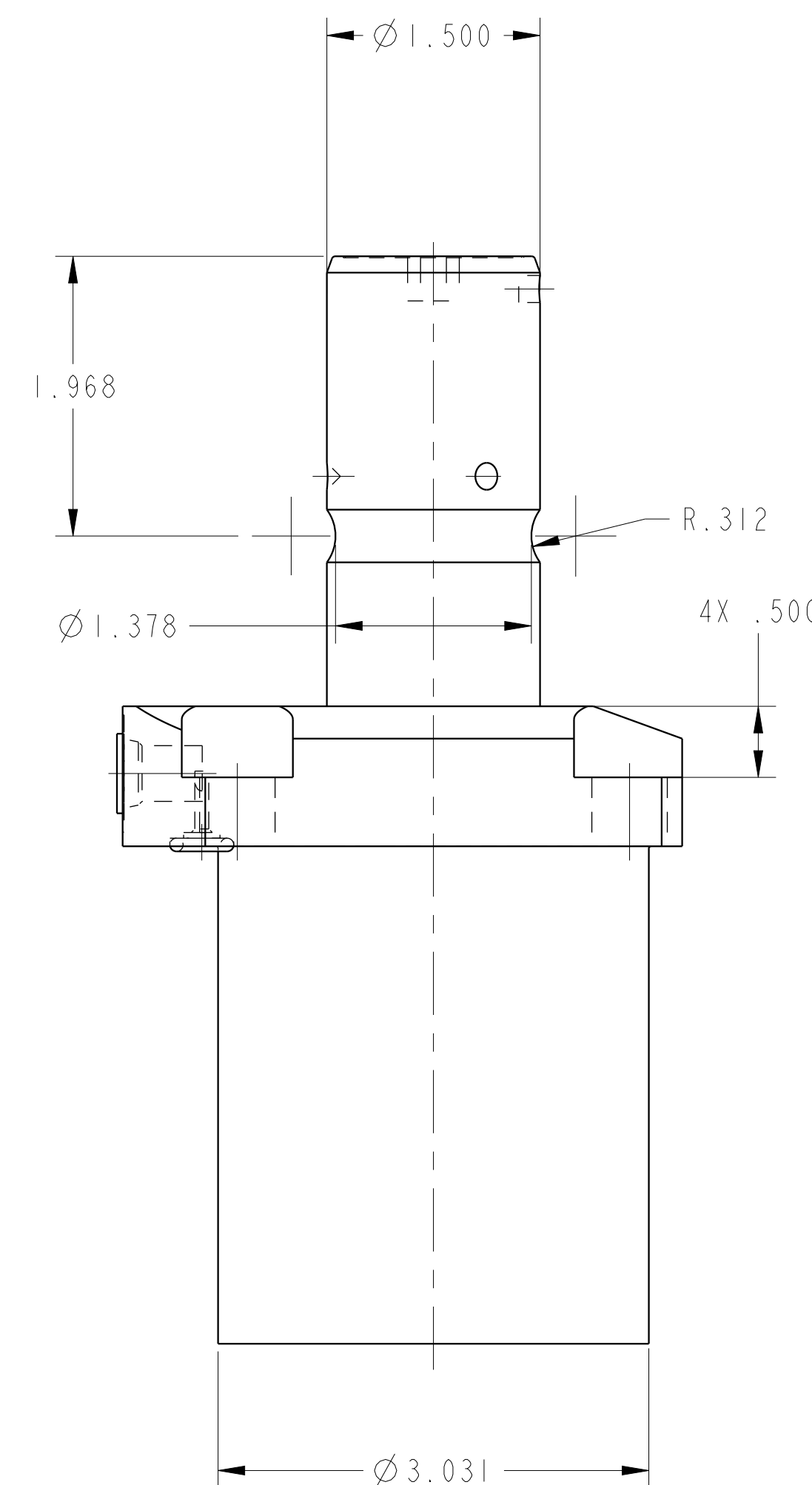
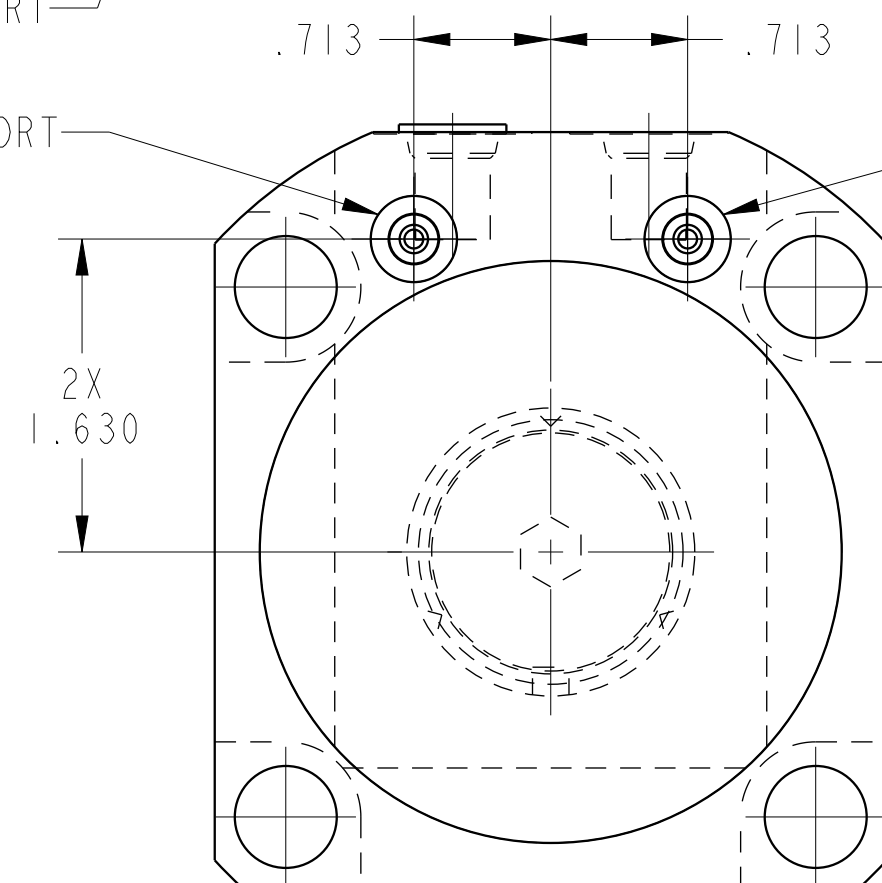


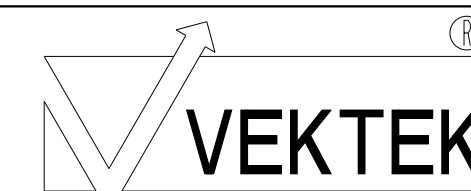
ILC14052100 REV A ECN 2307



SAE 4 BREATHER PORT
MANIFOLD O-RING BREATHER PORT
SAE 4 CLAMP PORT
MANIFOLD O-RING CLAMP PORT



CAD CONTROL DRAWING



VEKTEK, INC.
1334 E. SIXTH AVE. P.O. BOX 625
EMPORIA, KS. 66801 U.S.A.

A	2307	RELEASE	JDW	7-14-11
REV	IN ACCORDANCE WITH ECN	EFFECTIVE DATE	REVISED BY	DATE
DRW BY:	JDW	DRAWING STATUS: Released		
DATE:	7-14-11	PRODUCTION APPROVED FOR RELEASED STATUS ONLY		

14052100	A
REFERENCE MODEL	REF REV
TOLERANCES DO NOT APPLY DIMENSIONS ARE NOMINAL	

SC,LP,TF,TC,7500,SA,RH	SIZE D	ILC14052100	REV A
------------------------	--------	-------------	-------