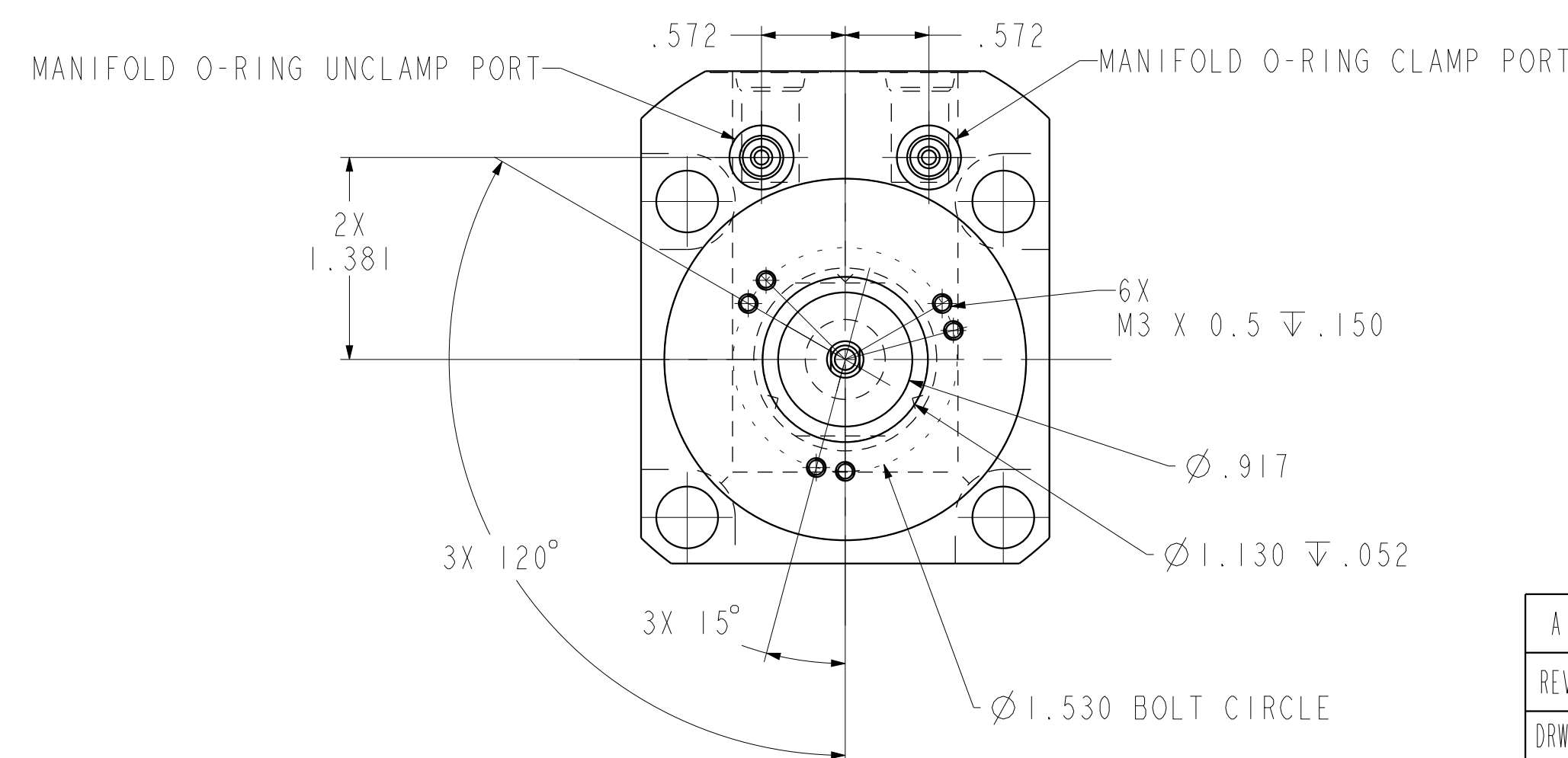
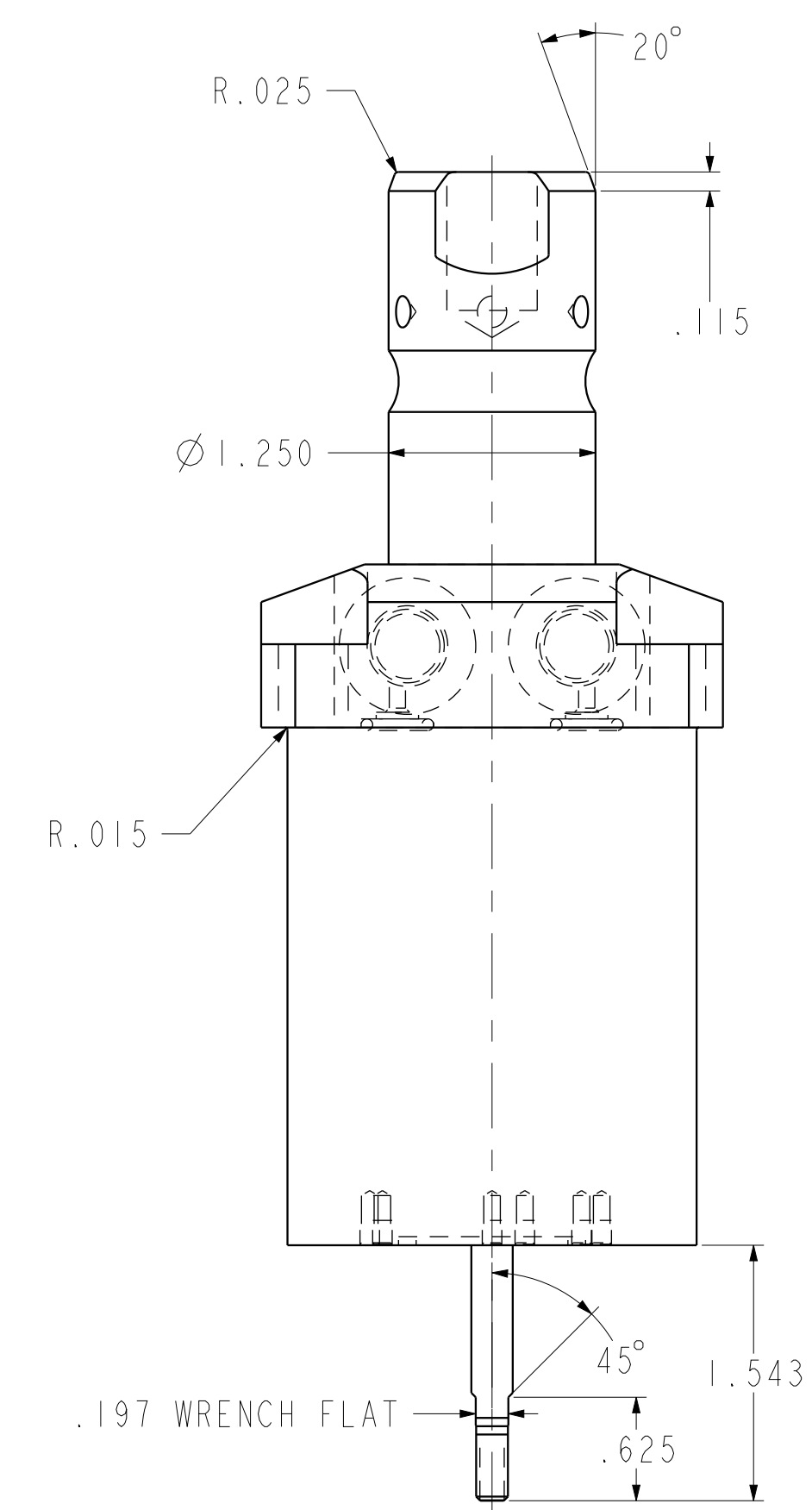
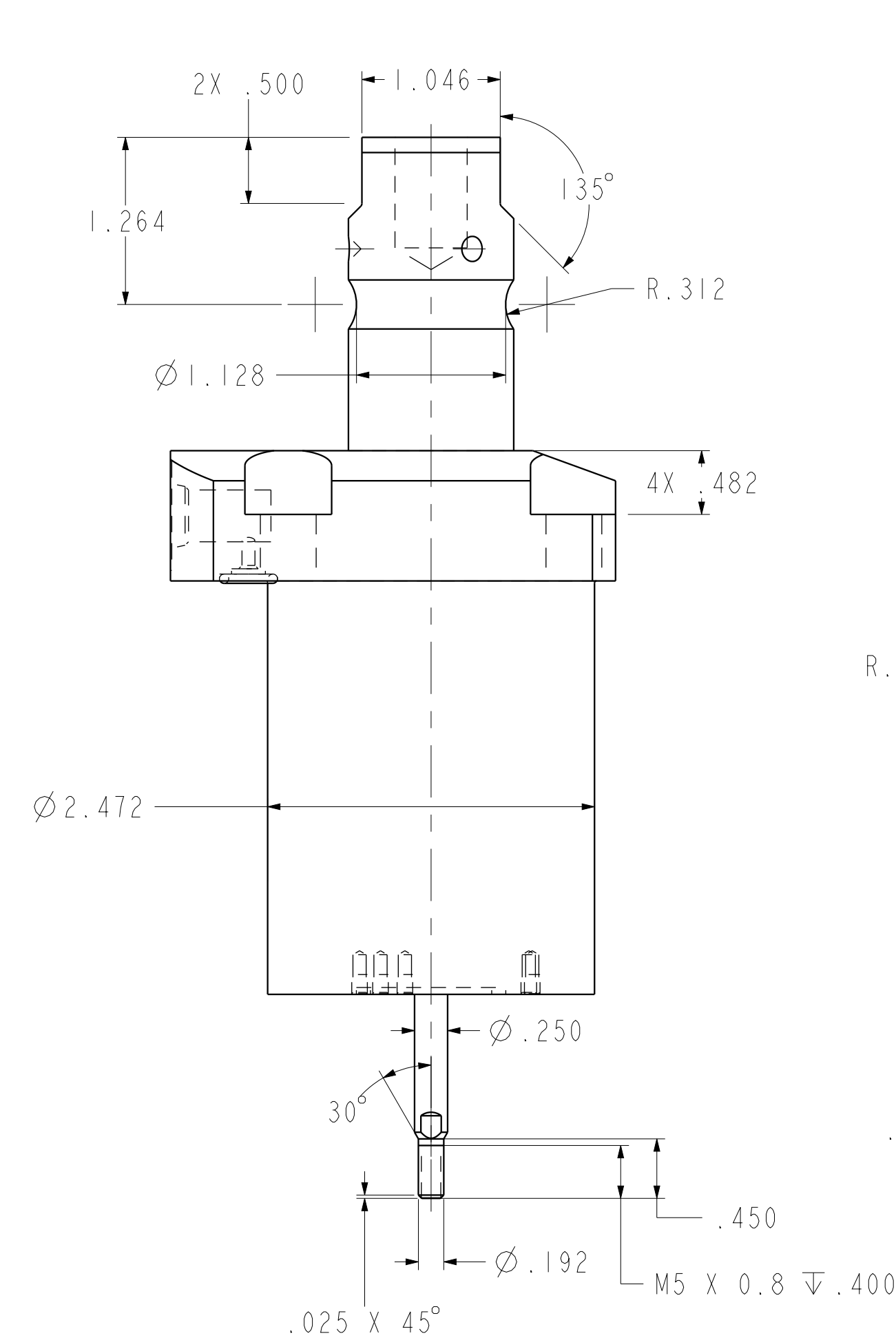
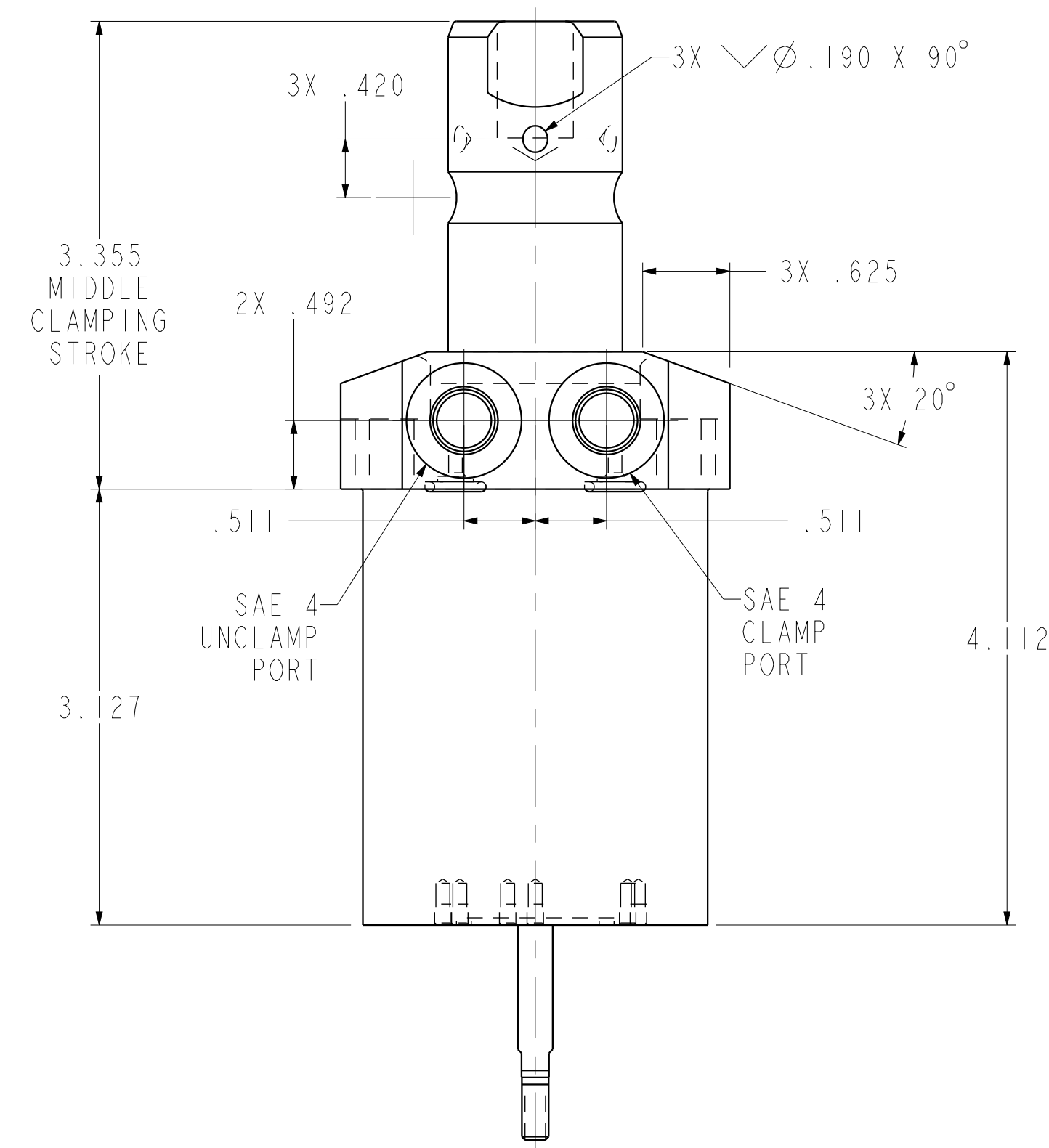
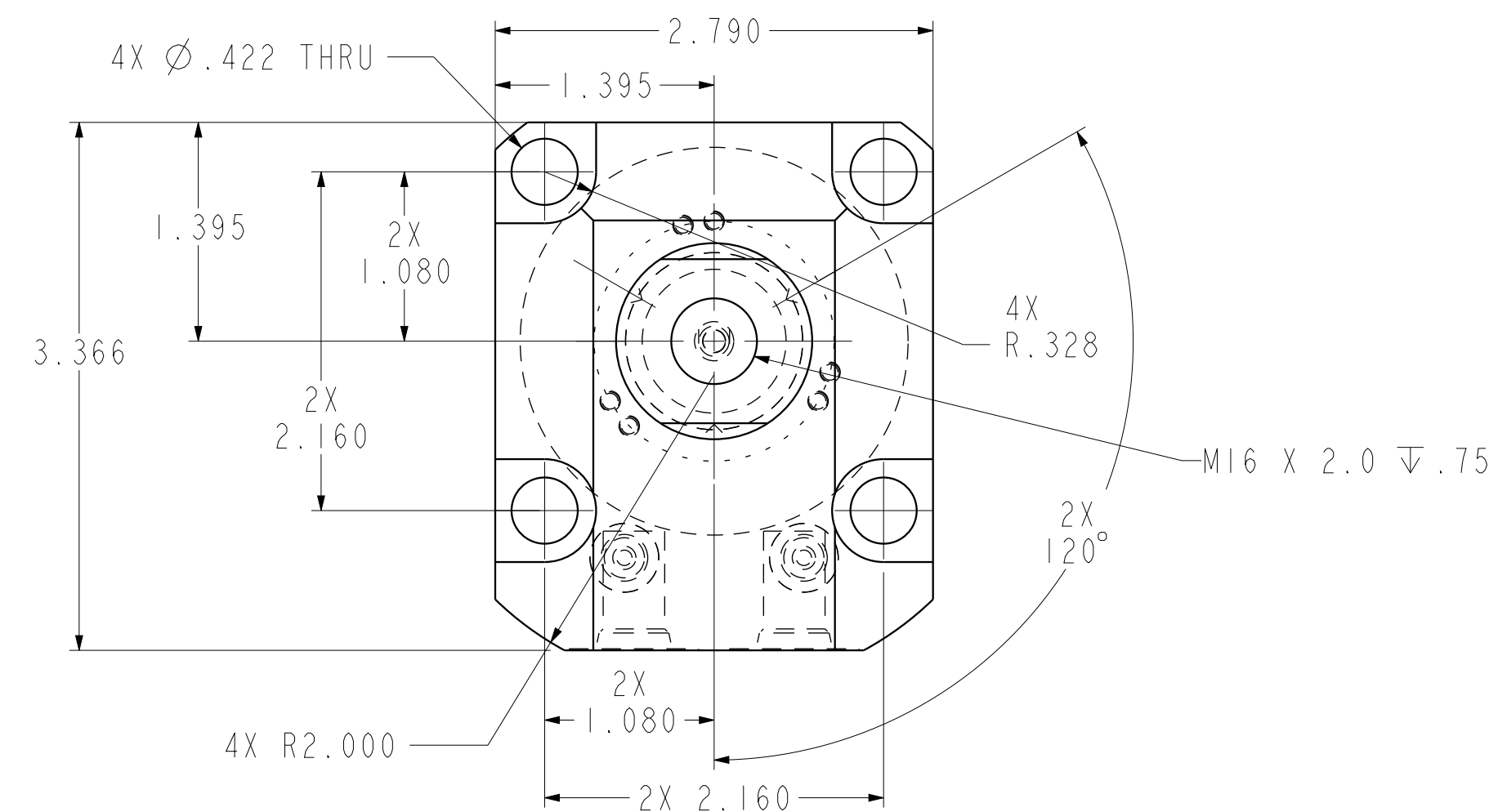
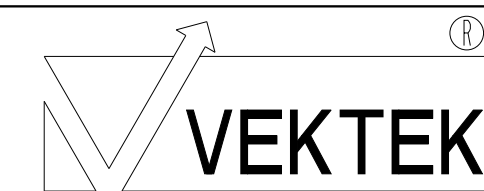


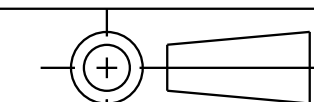
ILC14061800PR REV A ECN 3481



CAD CONTROL DRAWING



VEKTEK, INC.
1334 E. SIXTH AVE. P.O. BOX 625
EMPORIA, KS. 66801 U.S.A.



A	3481	RELEASE	JDW	06/02/18	14061800PR	A	SC, LP, TF, TC, 5000, DA, RH, PR
REV	IN ACCORDANCE WITH ECN	EFFECTIVE DATE	REVISED BY	DATE	REFERENCE MODEL	REF REV	
DRW BY:	JDW	DRAWING STATUS: Released			TOLERANCES DO NOT APPLY		SIZE
DATE:	06/02/18	PRODUCTION APPROVED FOR RELEASED STATUS ONLY			DIMENSIONS ARE NOMINAL		D ILC14061800PR REV A