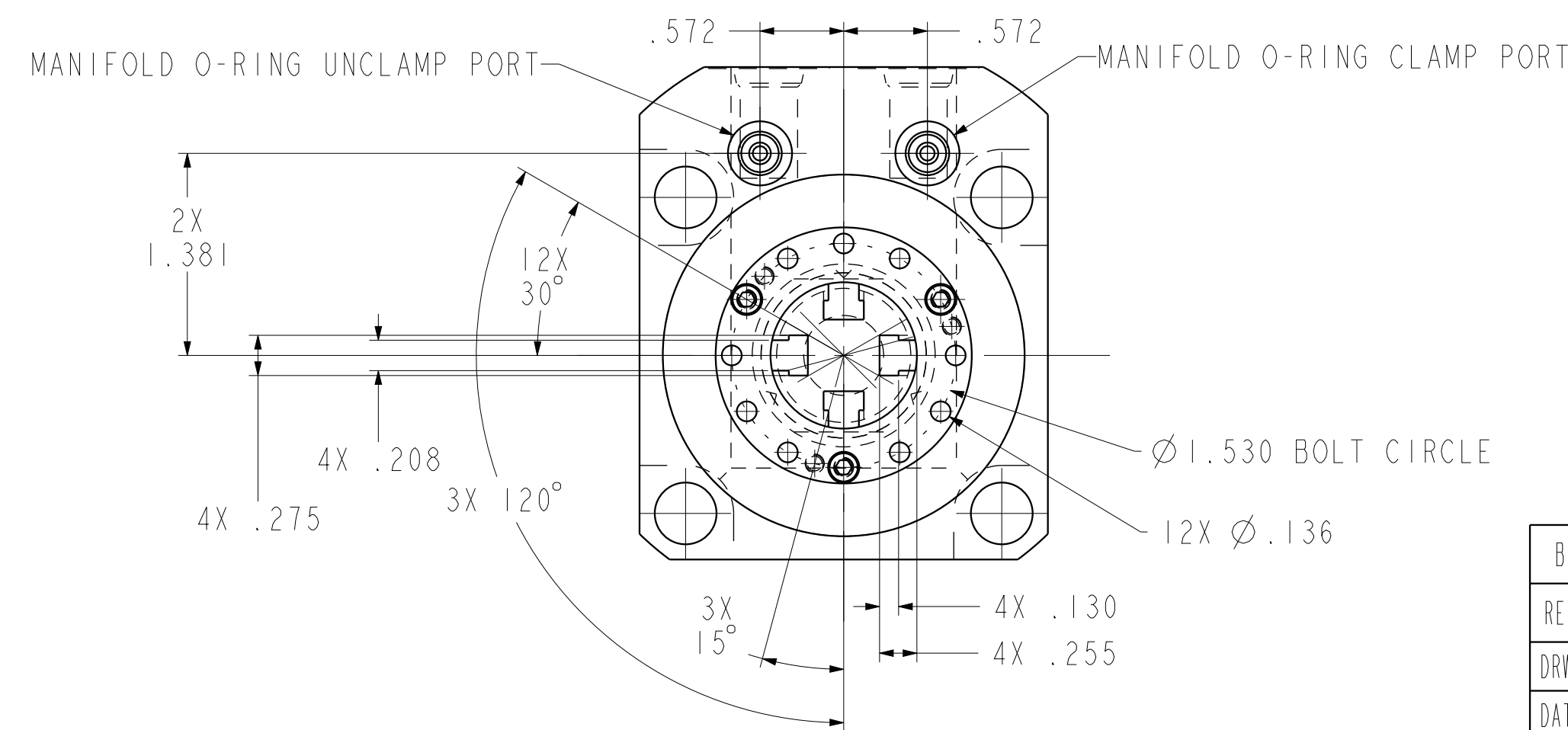
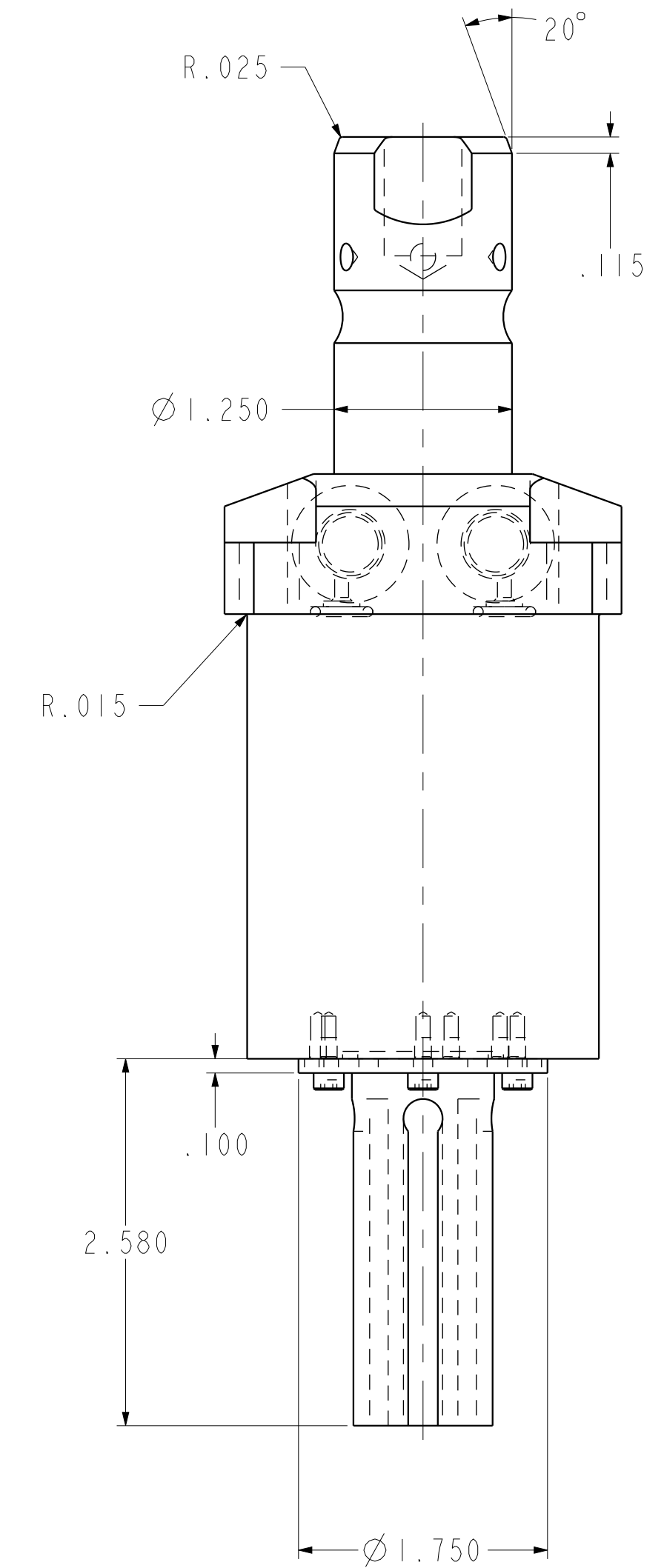
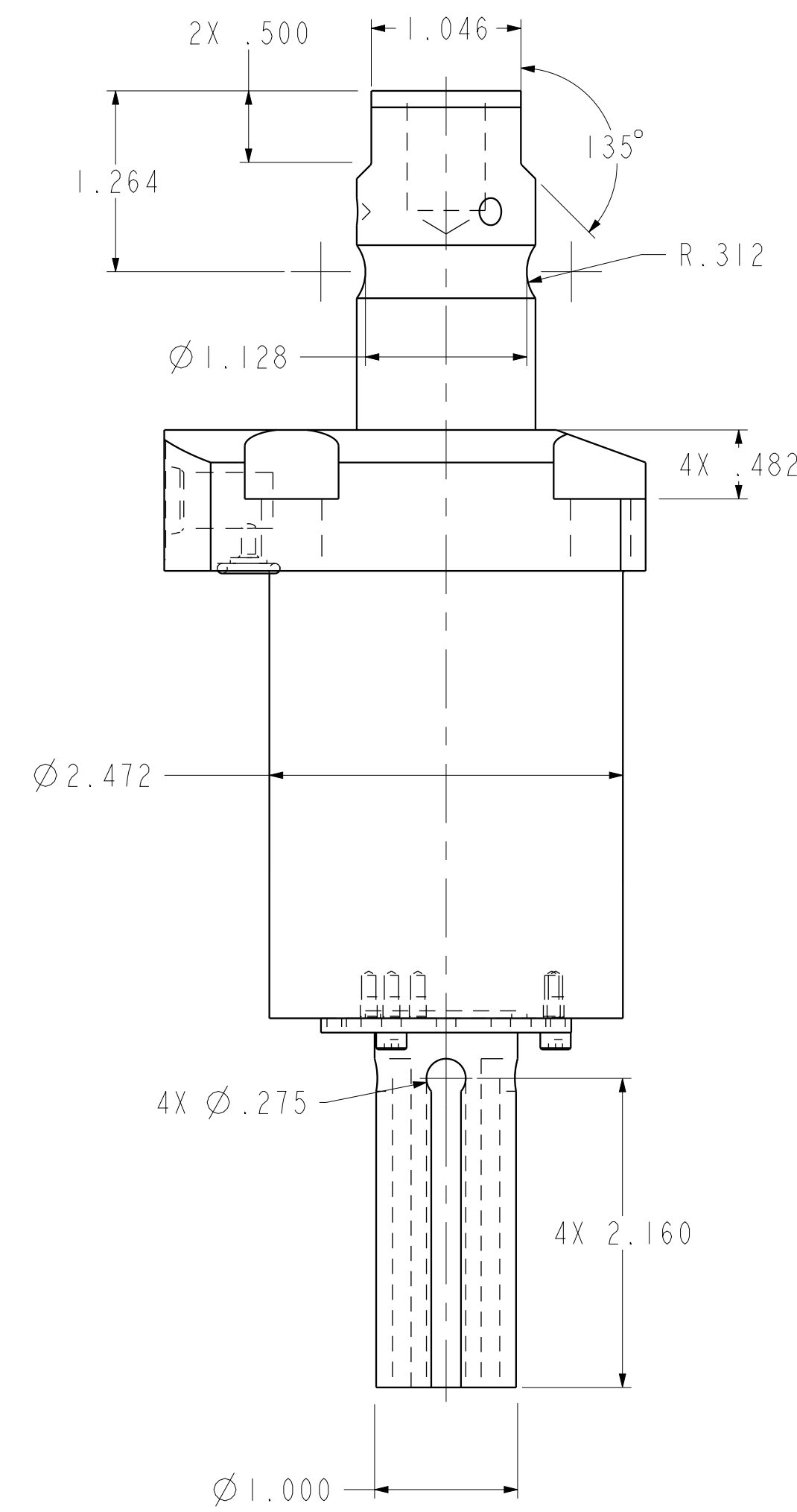
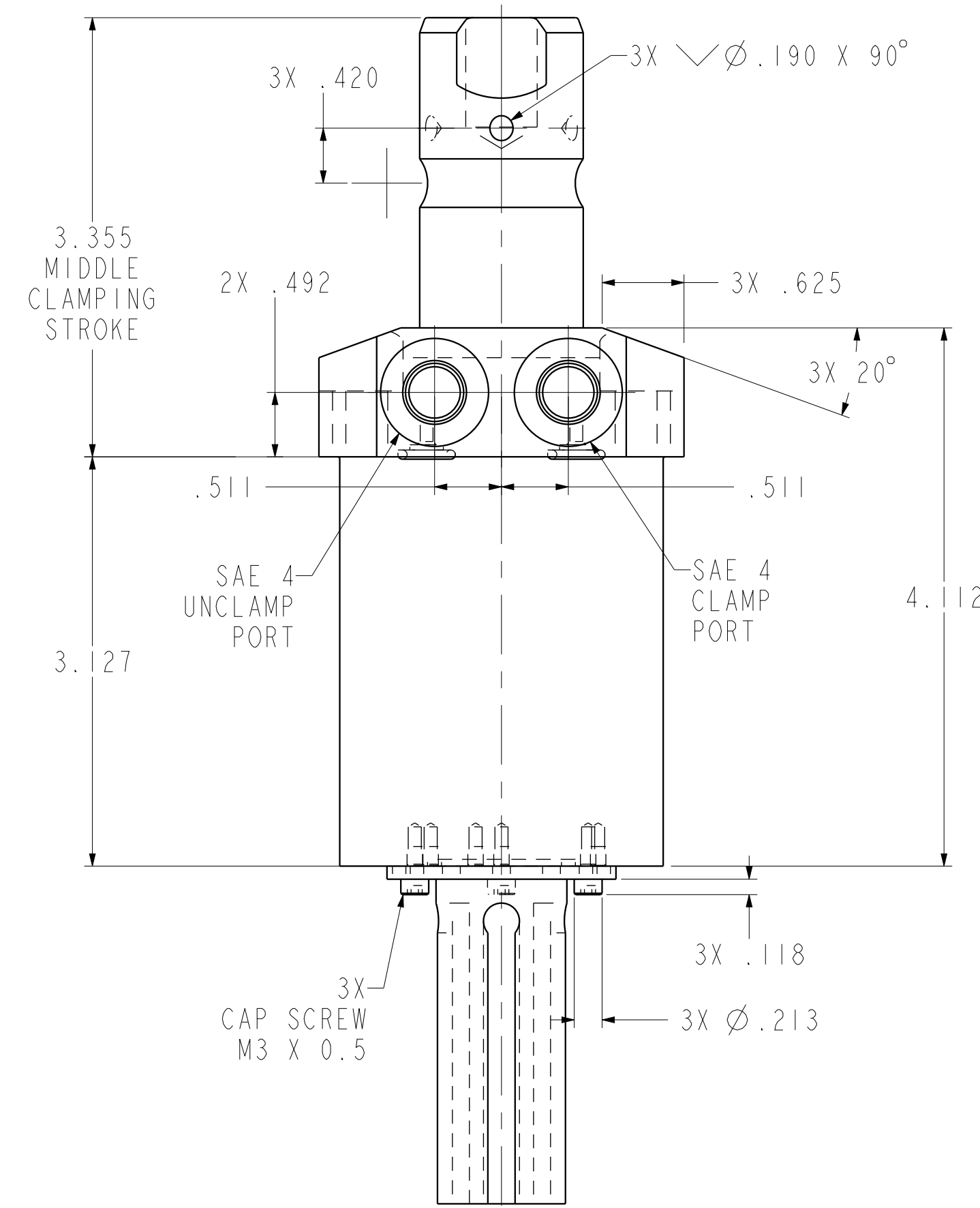
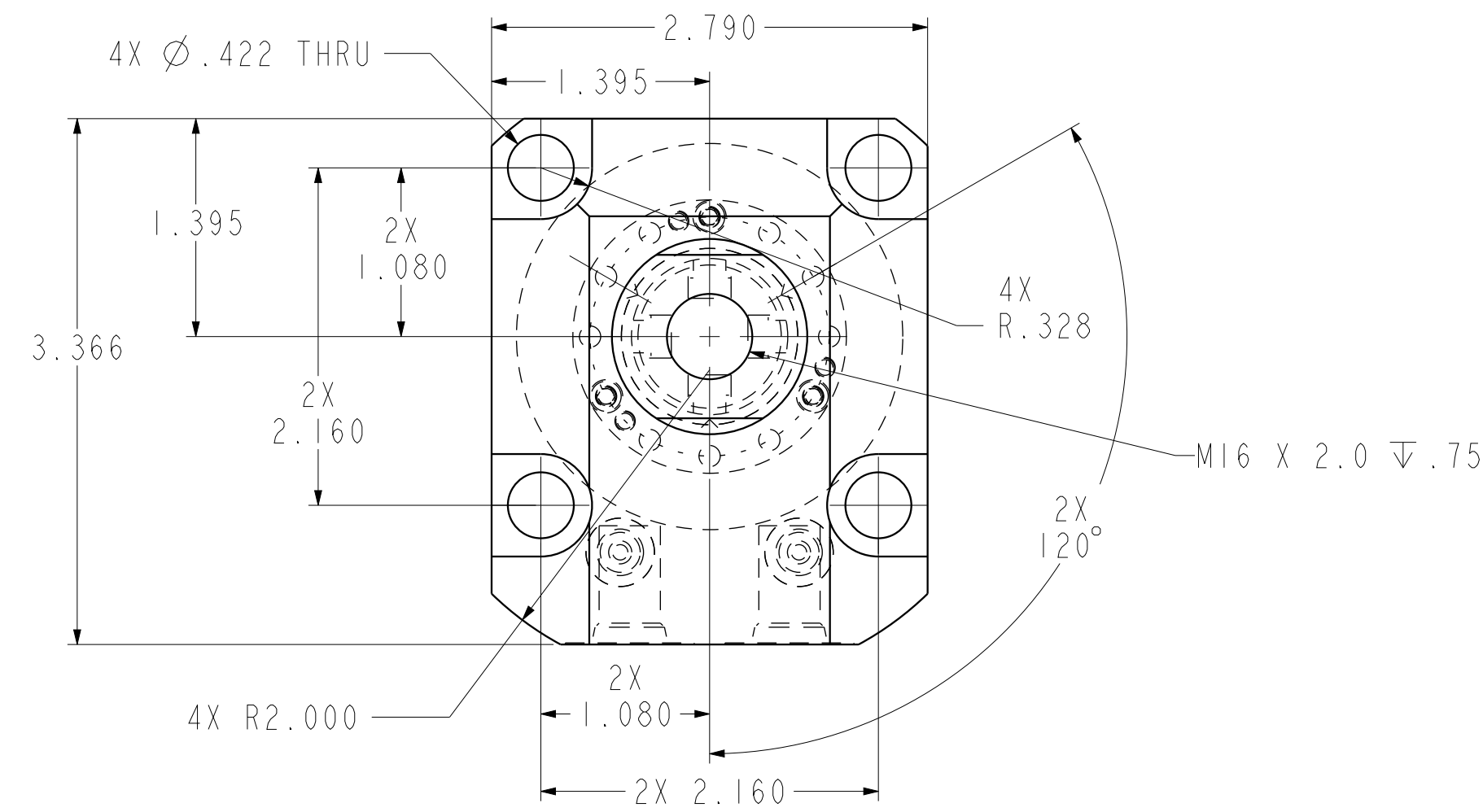
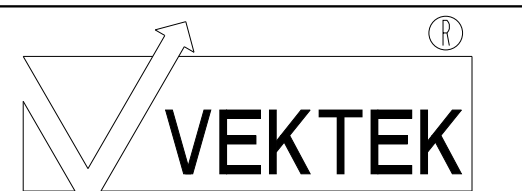


ILC14061800PS REV B ECN 4191



CAD CONTROL DRAWING



VEKTEK, INC.
1334 E. SIXTH AVE. P.O. BOX 625
EMPORIA, KS. 66801 U.S.A.

| | | | | | | | |
|---------|------------------------|--|------------|----------|-------------------------|---------|----------------------------------|
| B | 4191 | RELEASE | JDW | 05/22/20 | 14061800PS | A | SC, LP, TF, TC, 5000, DA, RH, PS |
| REV | IN ACCORDANCE WITH ECN | EFFECTIVE DATE | REVISED BY | DATE | REFERENCE MODEL | REF REV | |
| DRW BY: | JDW | DRAWING STATUS: Released | | | TOLERANCES DO NOT APPLY | | SIZE |
| DATE: | 06/02/18 | PRODUCTION APPROVED FOR RELEASED STATUS ONLY | | | DIMENSIONS ARE NOMINAL | | D ILC14061800PS REV B |
| | | | | | | | FORM FEG036, Rev. B |