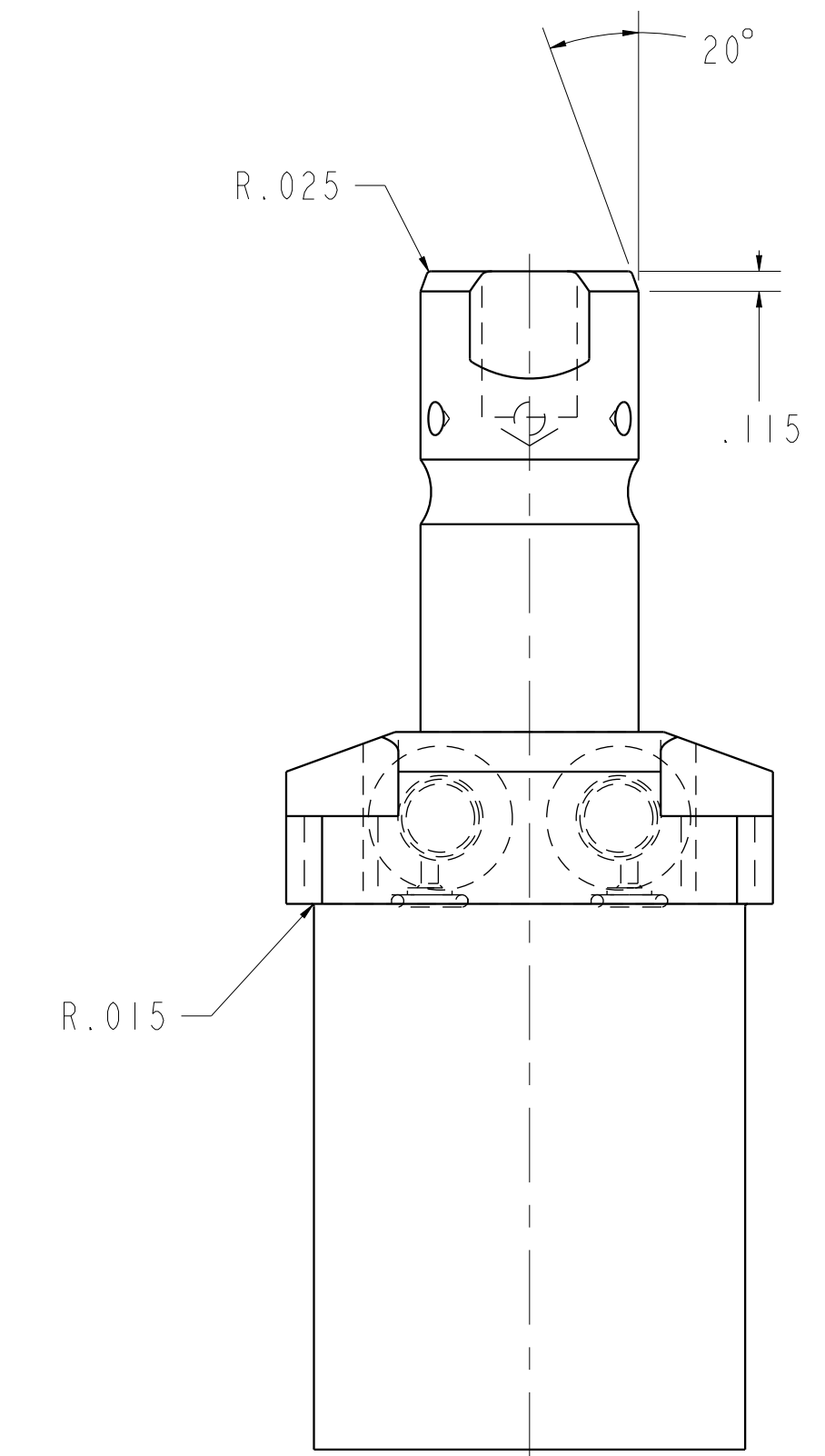
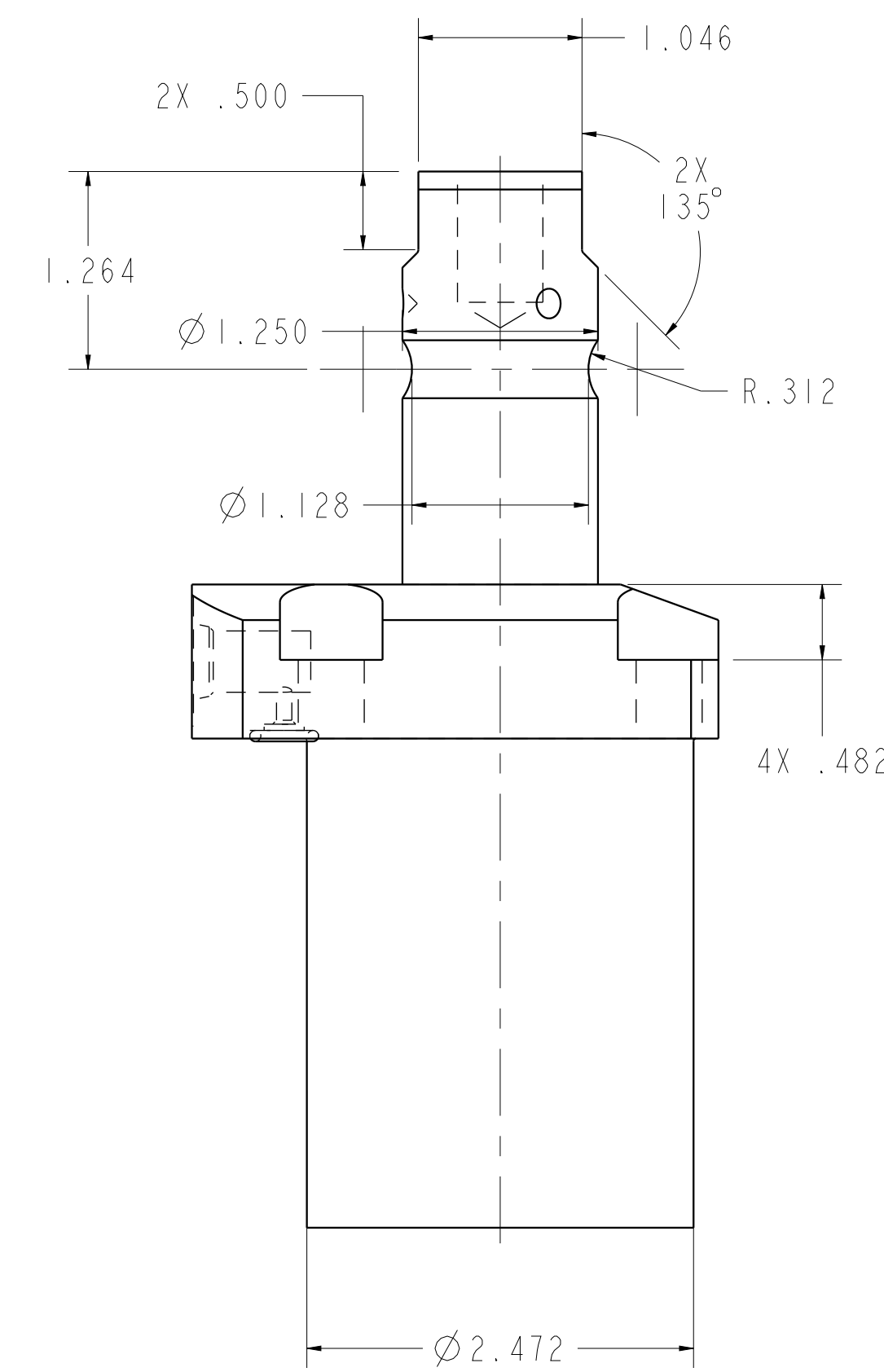
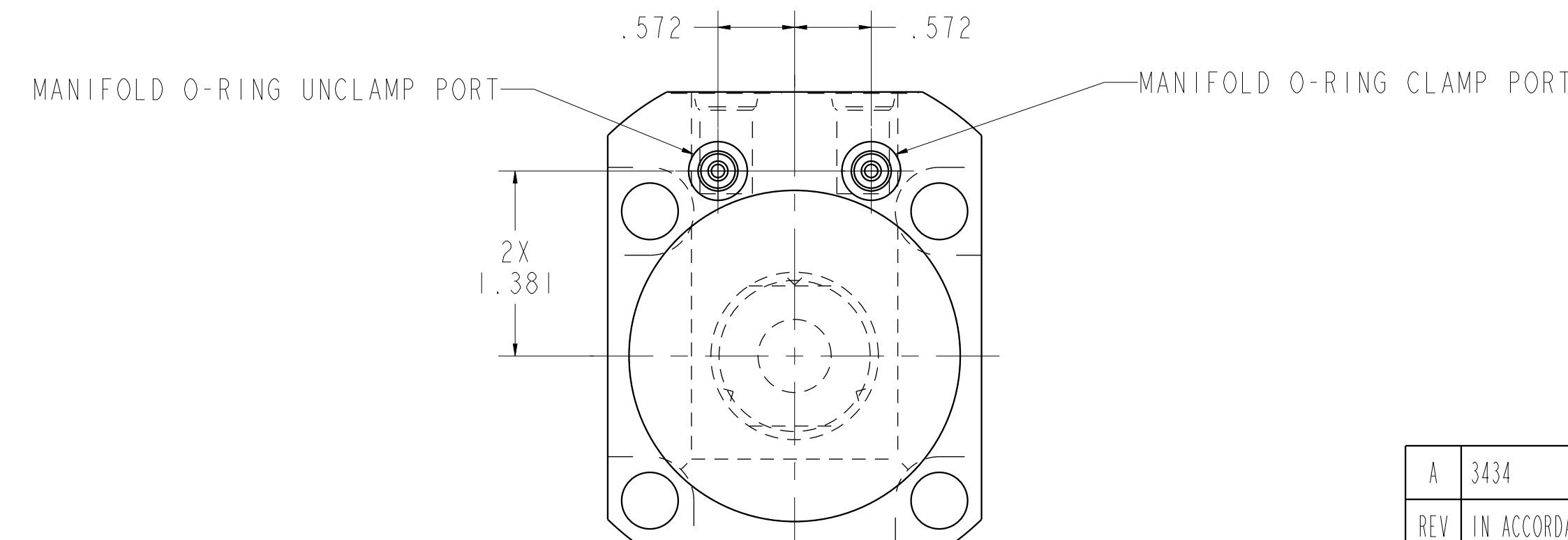
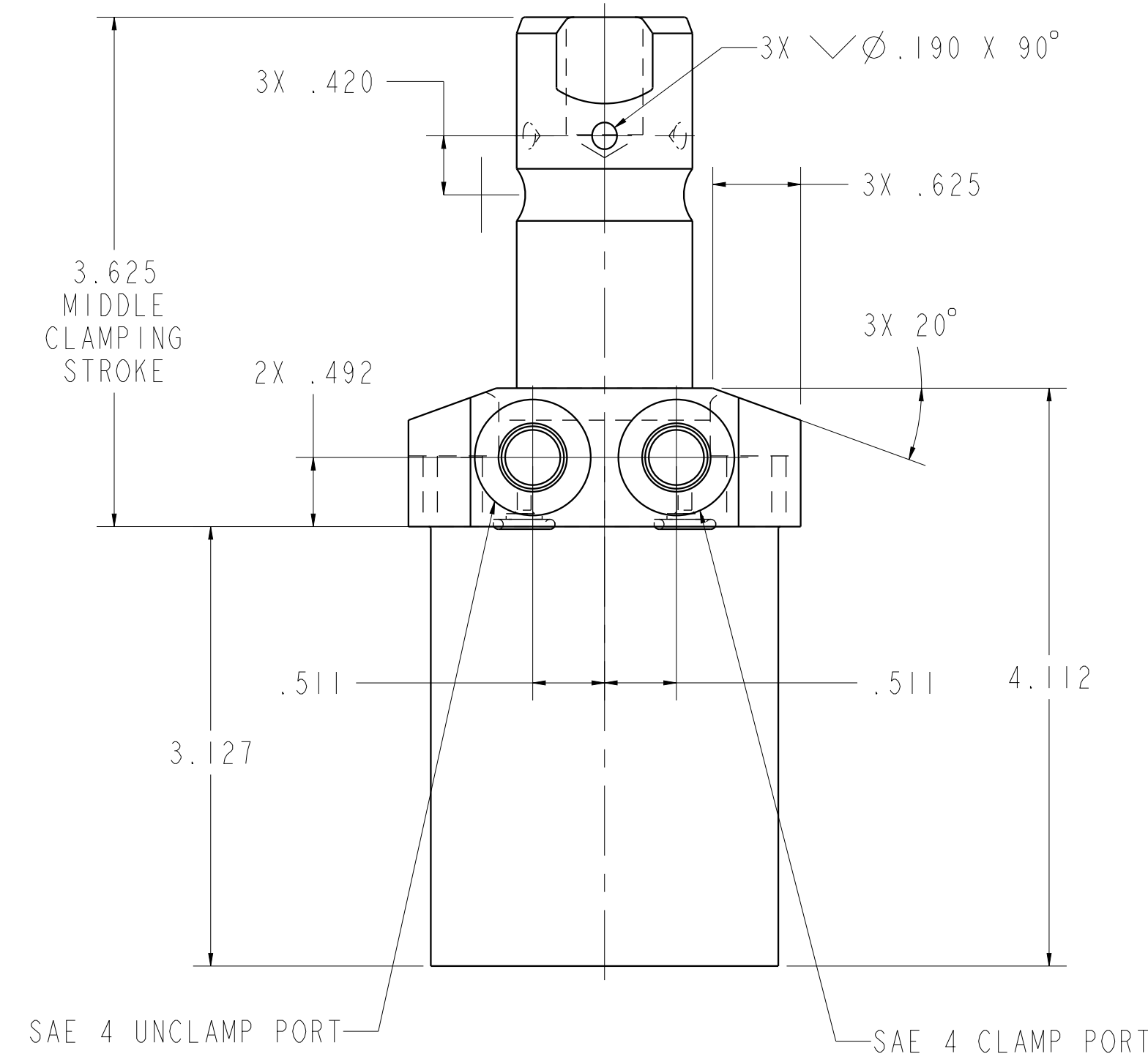
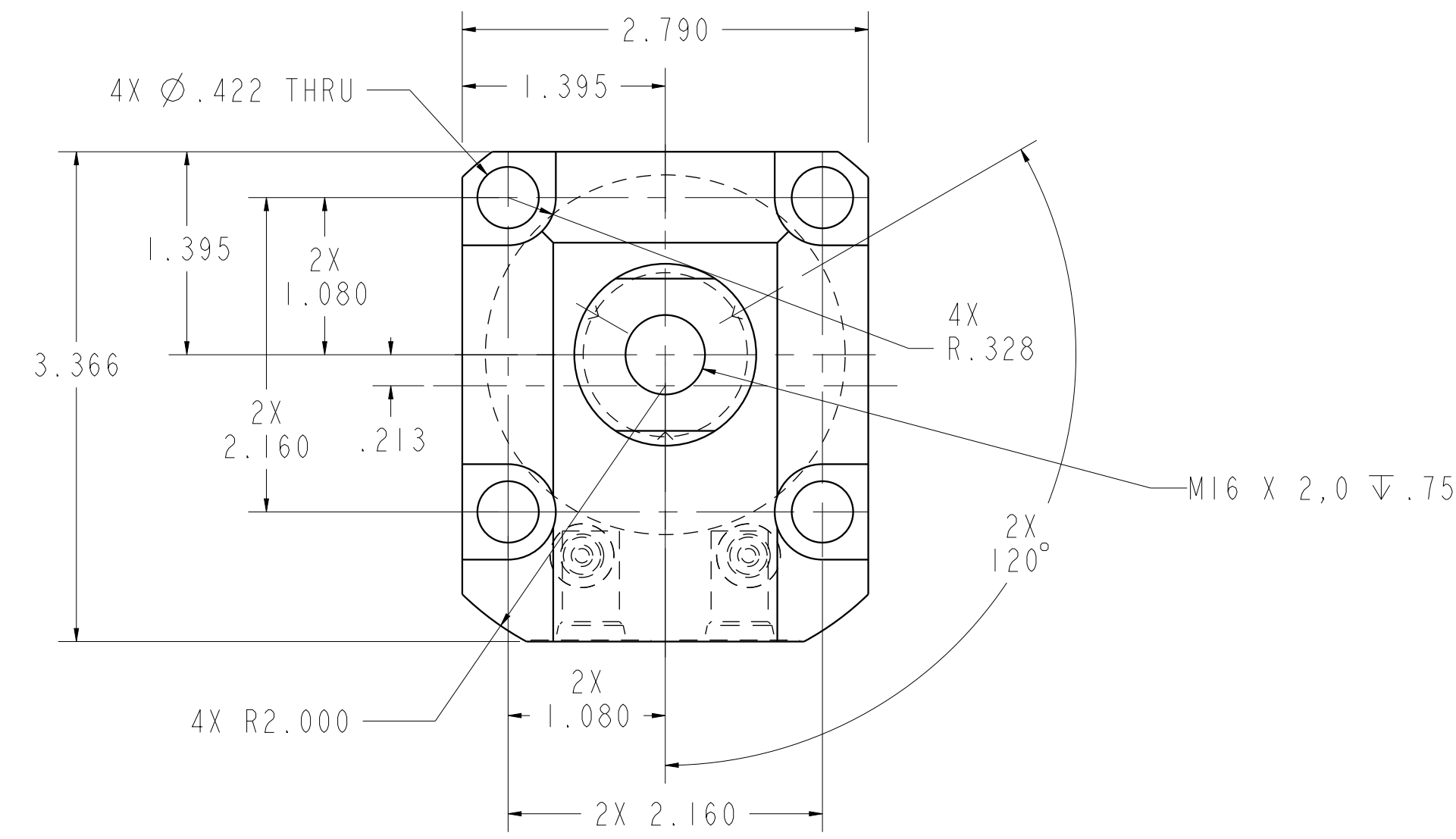
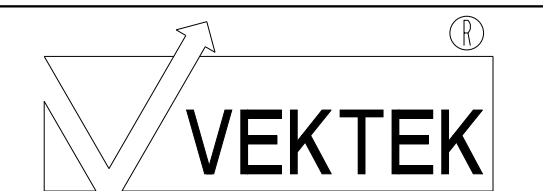


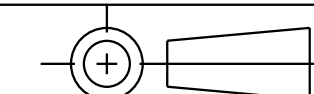
ILC14061802 REV A ECN 3434



CAD CONTROL DRAWING



VEKTEK, INC.
1334 E. SIXTH AVE. P.O. BOX 625
EMPORIA, KS. 66801 U.S.A.



A	3434	RELEASE	JDW	05/08/18
REV	IN ACCORDANCE WITH ECN	EFFECTIVE DATE	REVISED BY	DATE
DRW BY:	JDW	DRAWING STATUS: Released		
DATE:	05/08/18	PRODUCTION APPROVED FOR RELEASED STATUS ONLY		

14061802	A
REFERENCE MODEL	REF REV
TOLERANCES DO NOT APPLY DIMENSIONS ARE NOMINAL	

SC,LP,TF,TC,5000,DA,STR	SIZE D	REV A
ILC14061802		

FORM FEG036, Rev. B