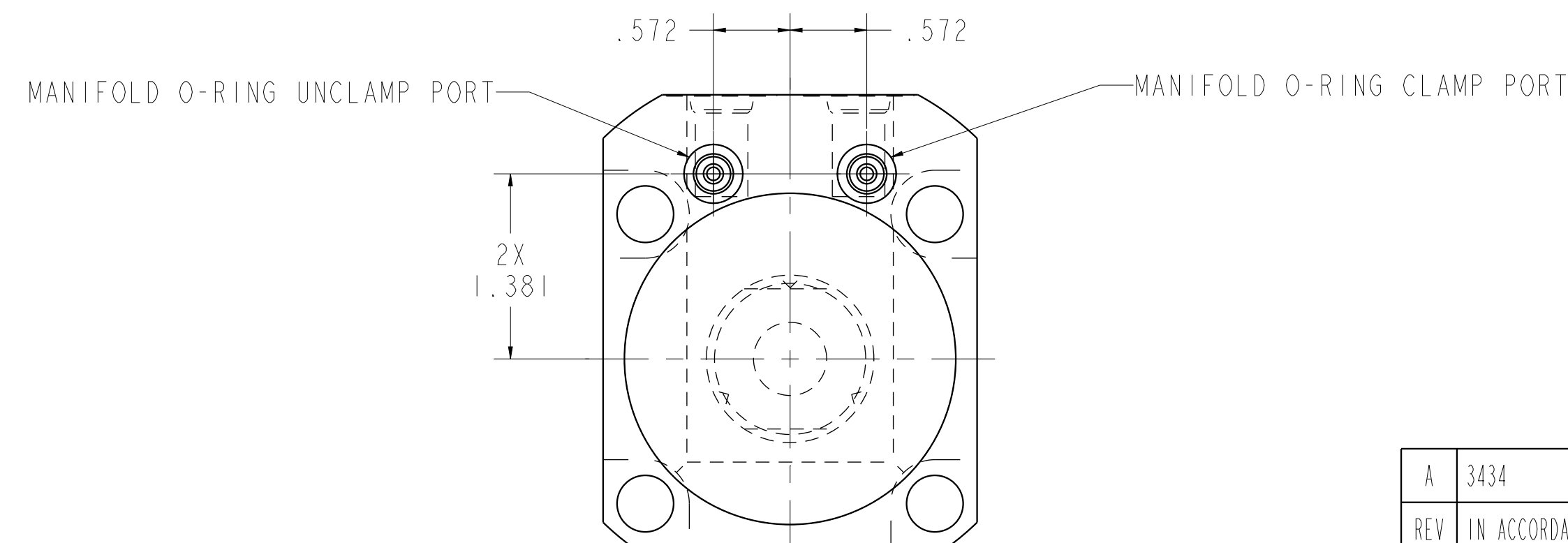
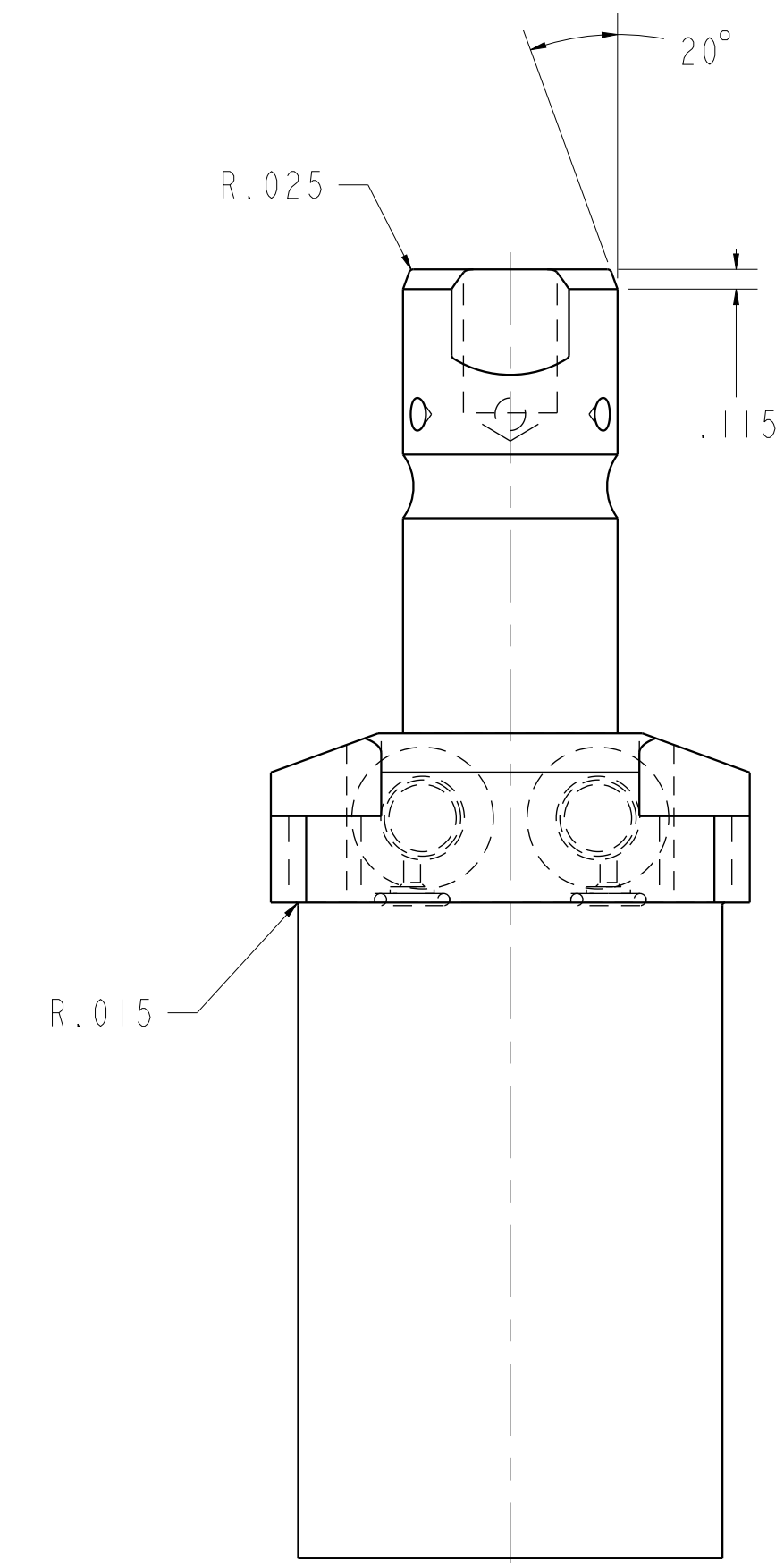
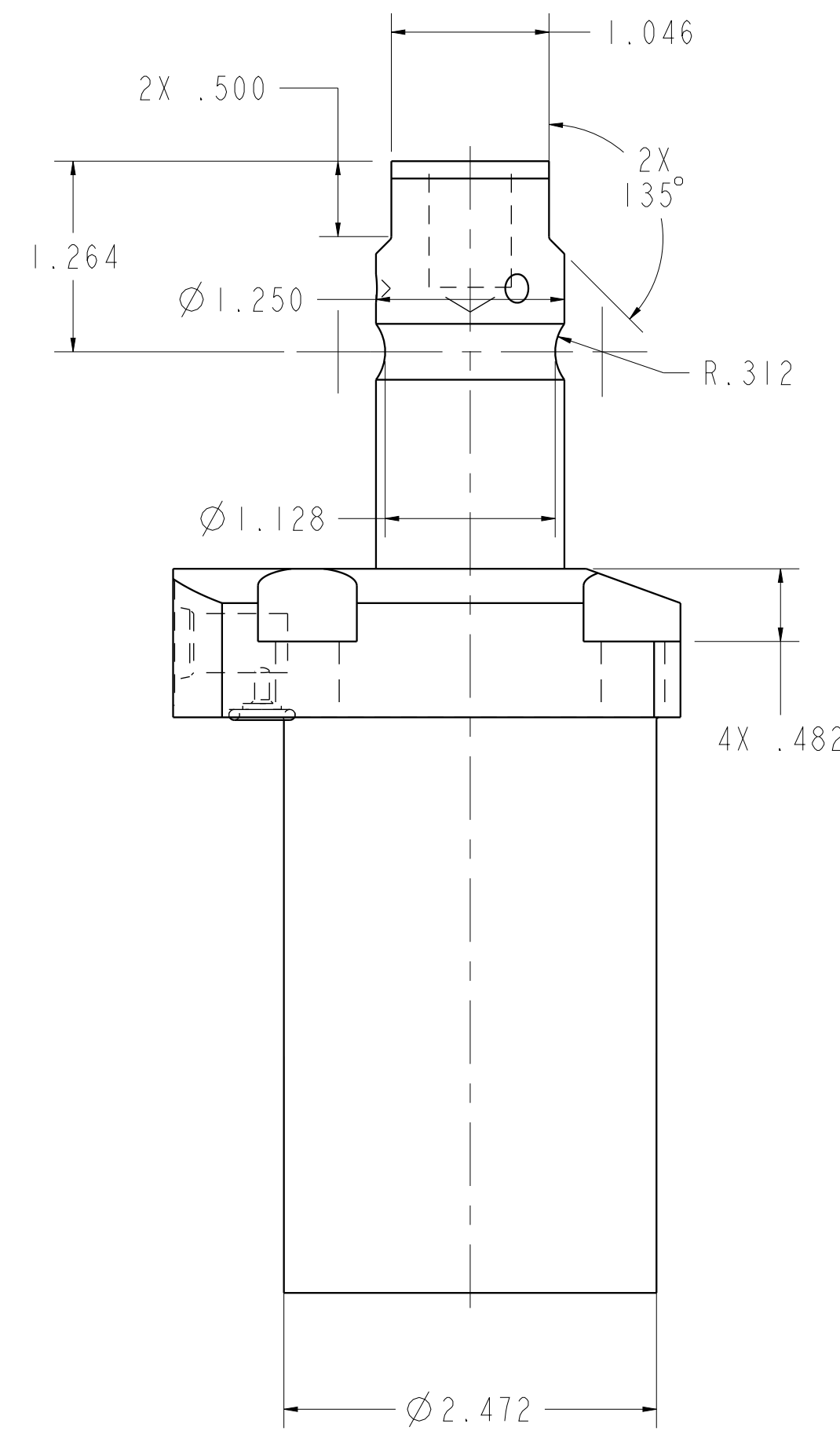
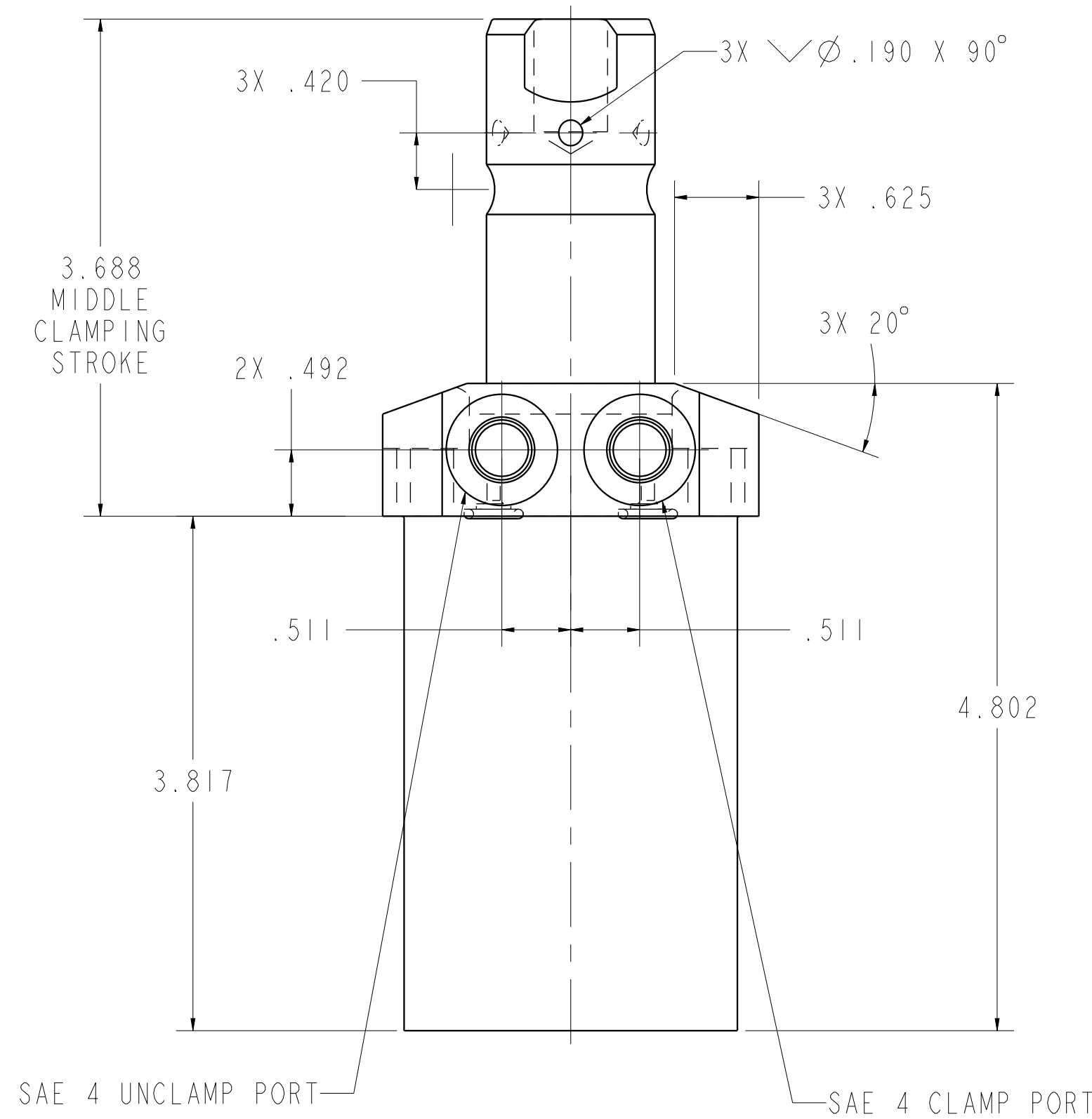
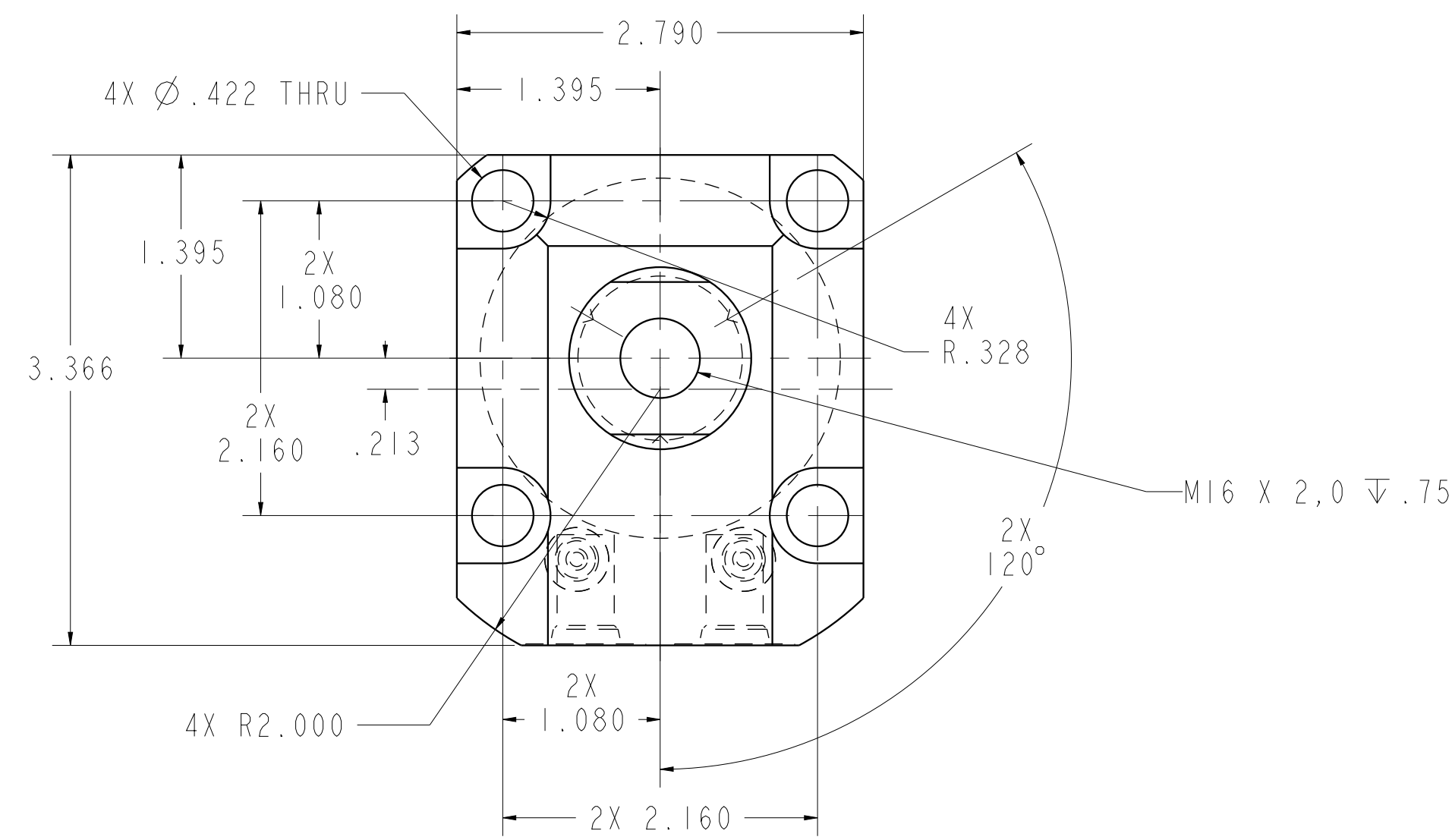
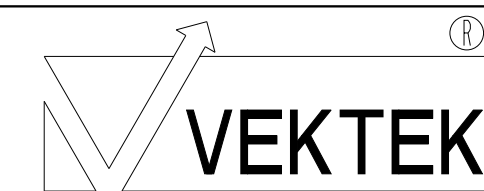


ILC14061803 REV A ECN 3434

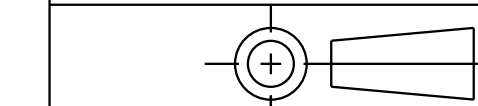


CAD CONTROL DRAWING



VEKTEK, INC.
1334 E. SIXTH AVE. P.O. BOX 625
EMPORIA, KS. 66801 U.S.A.

A	3434	RELEASE	JDW	05/08/18
REV	IN ACCORDANCE WITH ECN	EFFECTIVE DATE	REVISED BY	DATE
DRW BY:	JDW	DRAWING STATUS: Released		
DATE:	05/08/18	PRODUCTION APPROVED FOR RELEASED STATUS ONLY		



TOLERANCES DO NOT APPLY
DIMENSIONS ARE NOMINAL

SIZE D ILC14061803 REV A