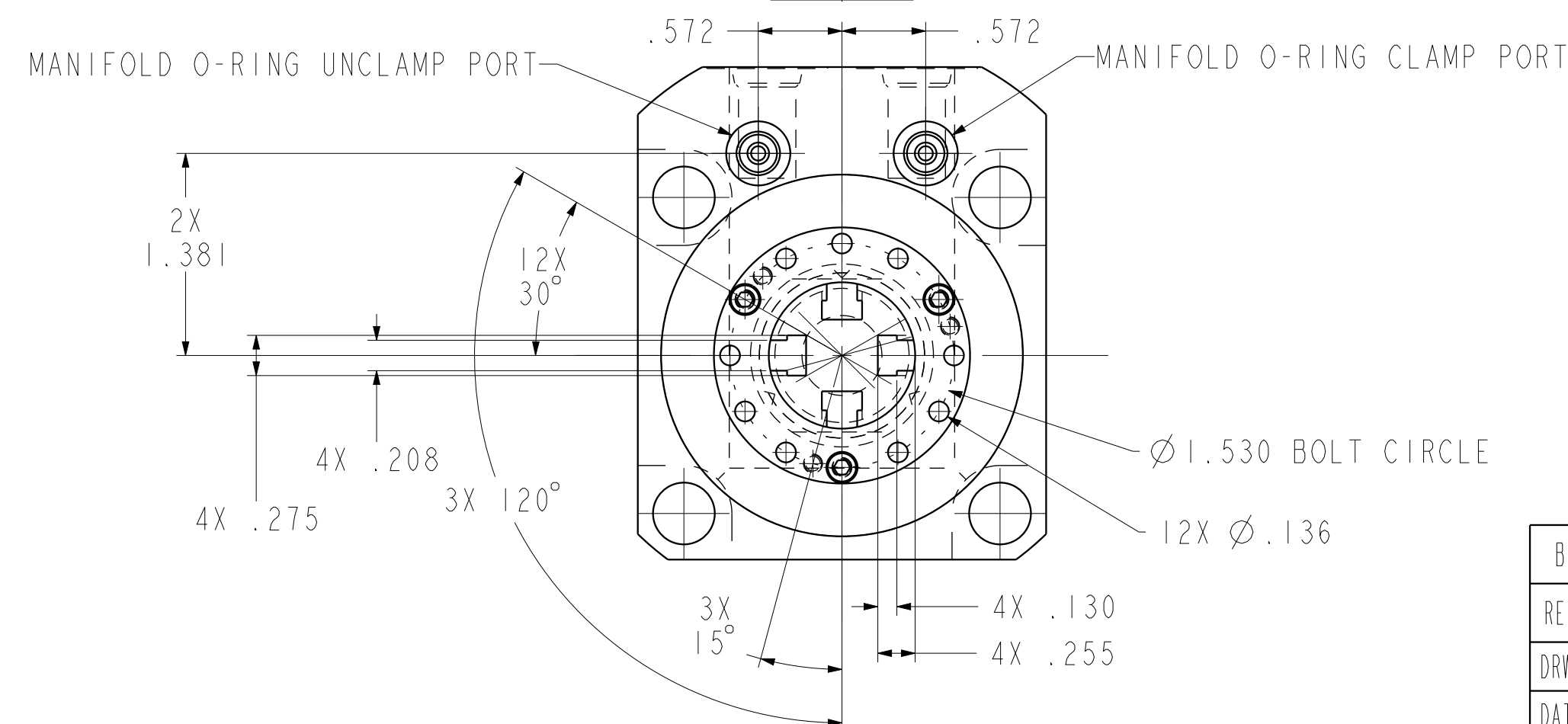
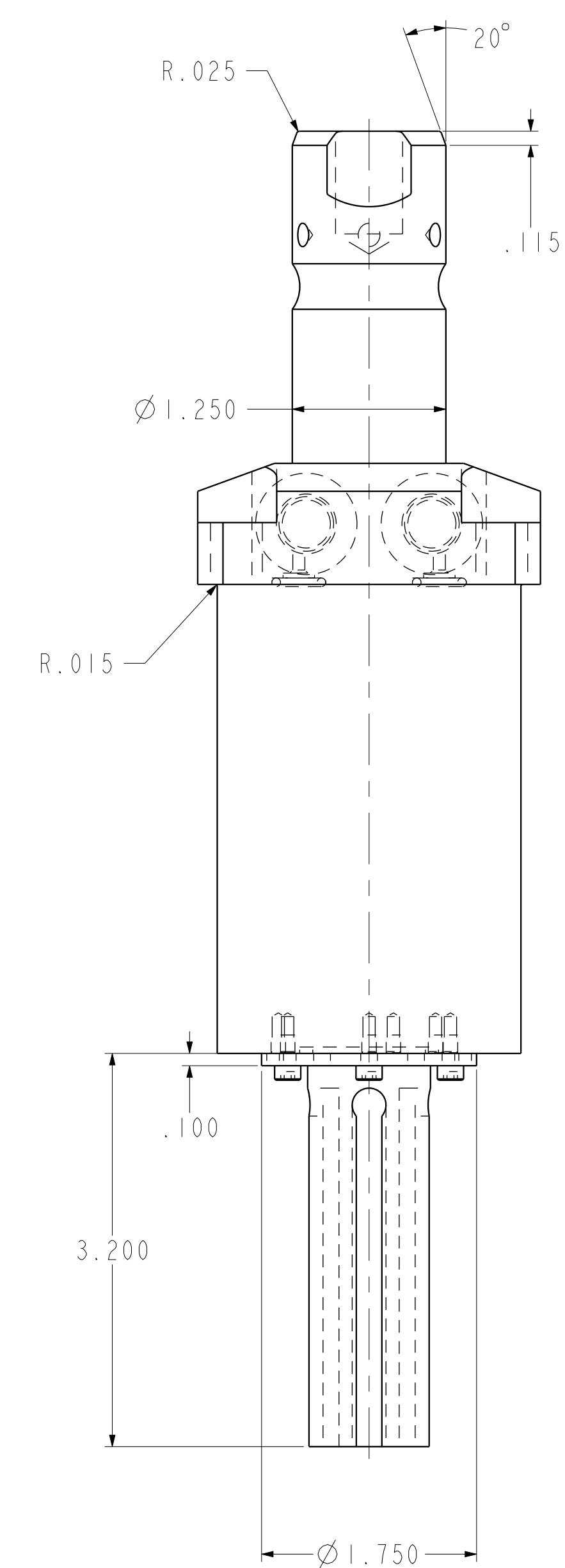
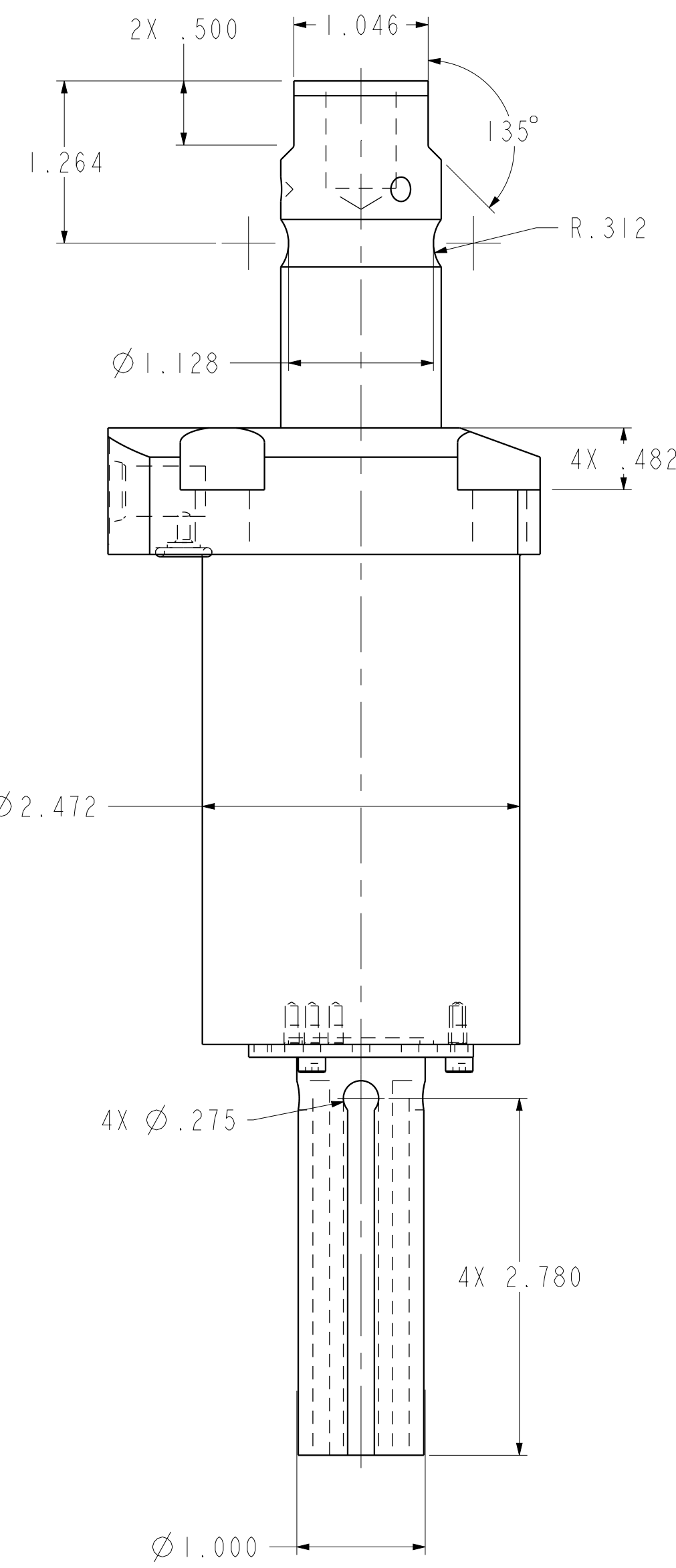
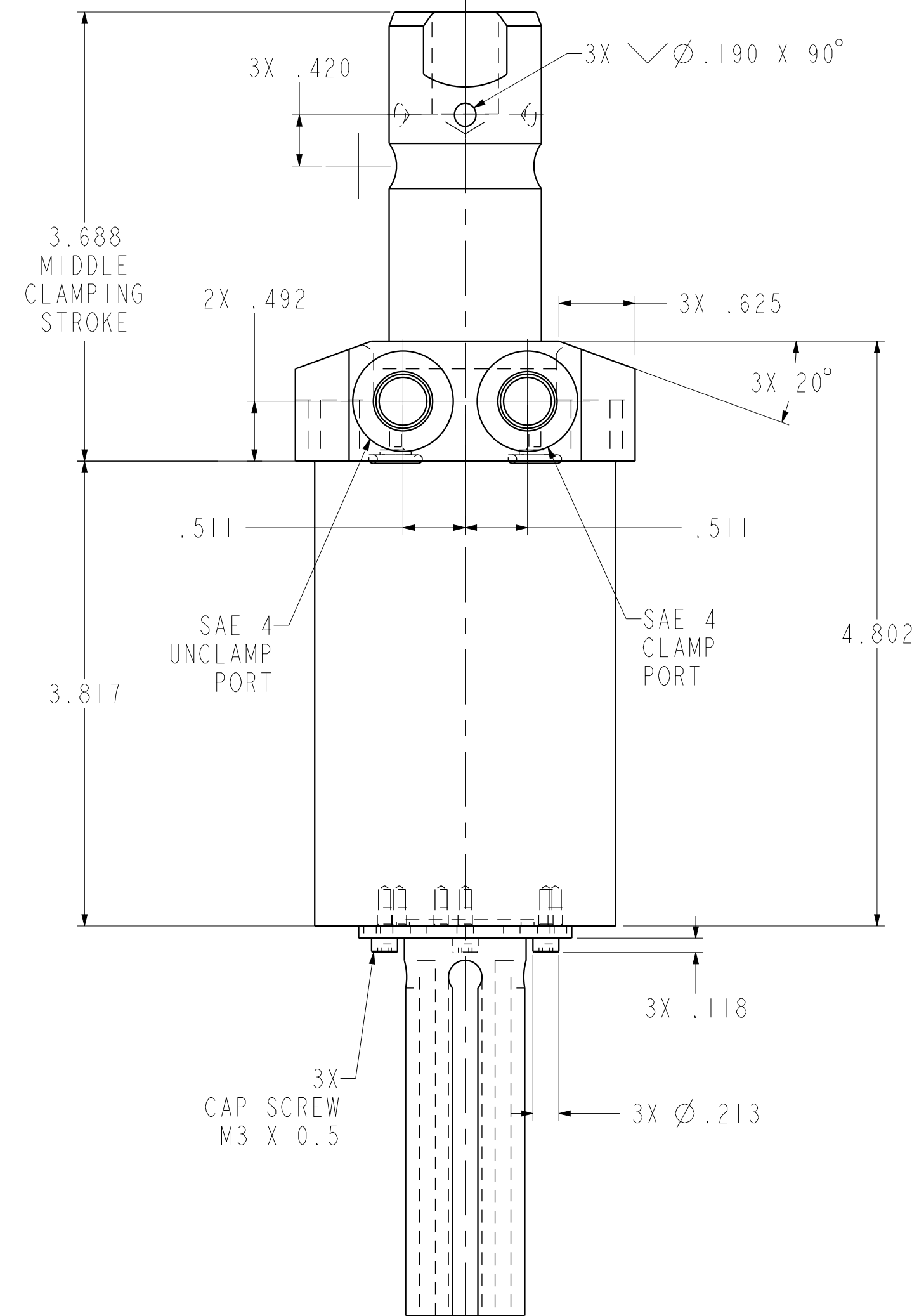
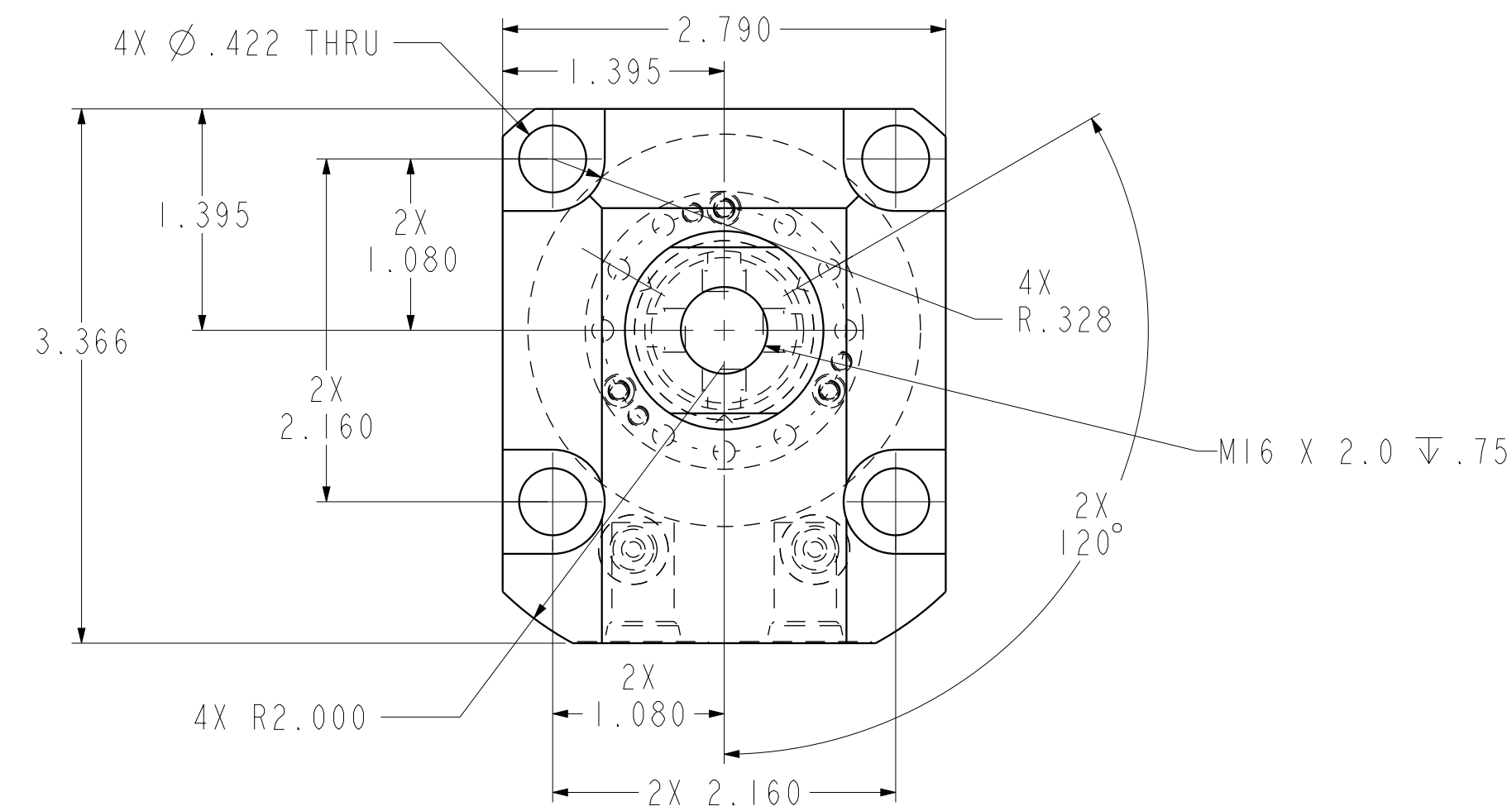


ILC14061803PS REV B ECN 4191



<b>CAD CONTROL DRAWING</b>			
		VEKTEK, INC. 1334 E. SIXTH AVE. P.O. BOX 625 EMPORIA, KS. 66801 U.S.A.	

B	4191	RELEASE	JDW	05/22/20	14061803PS	A	SC, LP, TF, TC, 5000, DA, RH, LS, PS
REV	IN ACCORDANCE WITH ECN	EFFECTIVE DATE	REVISED BY	DATE	REFERENCE MODEL	REF REV	
DRW BY:	JDW	DRAWING STATUS: <b>Released</b>			TOLERANCES DO NOT APPLY DIMENSIONS ARE NOMINAL		SIZE D
DATE:	06/02/18	PRODUCTION APPROVED FOR RELEASED STATUS ONLY					REV B
							FORM FEG036, Rev. B