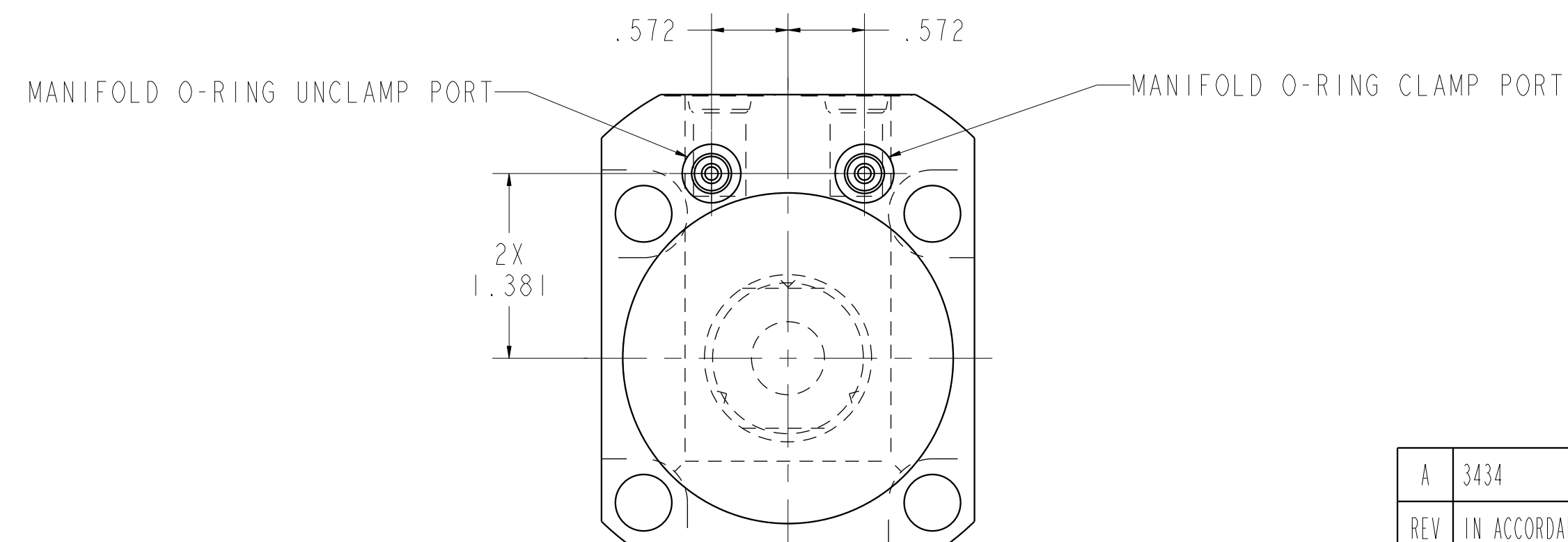
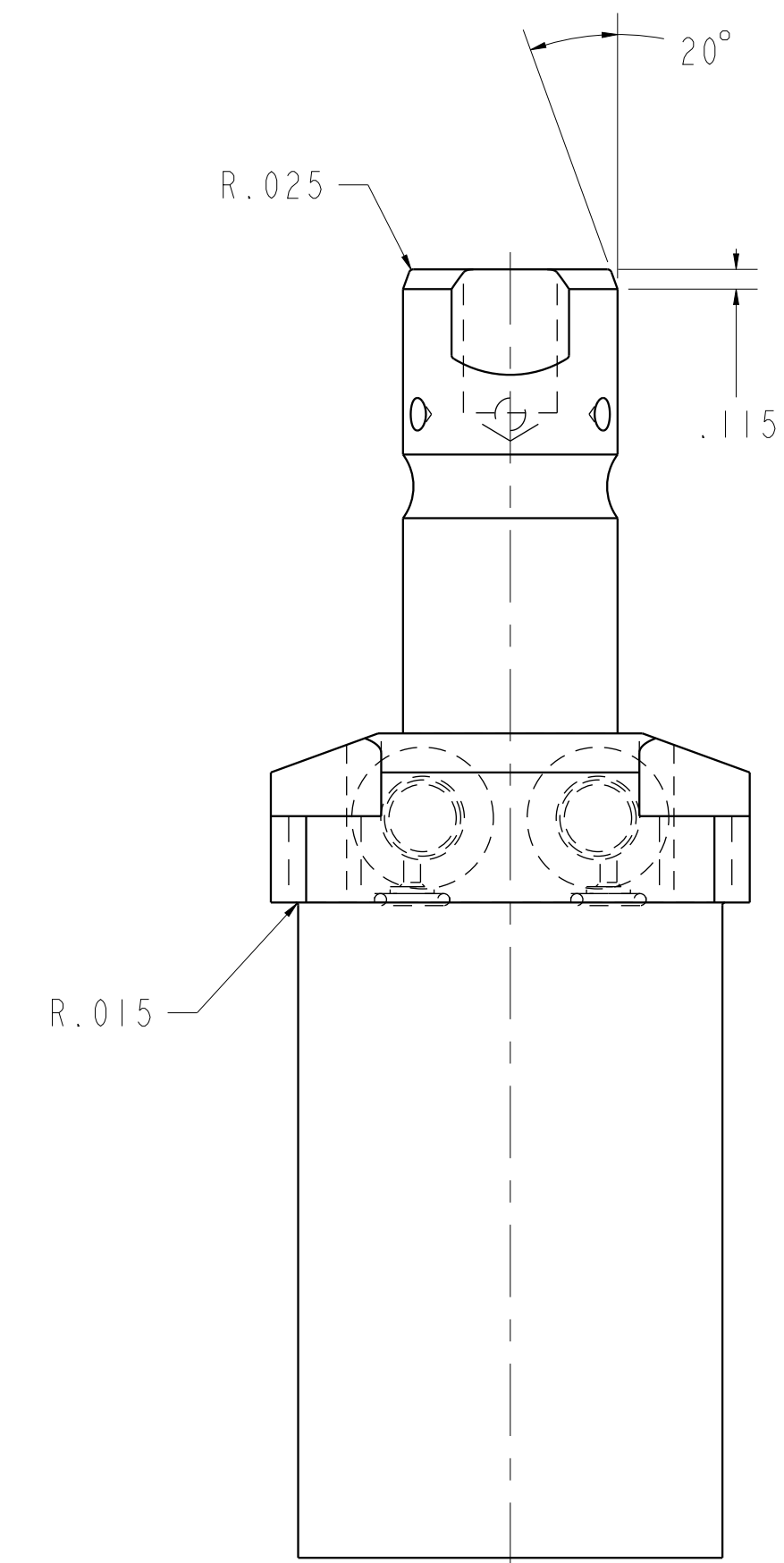
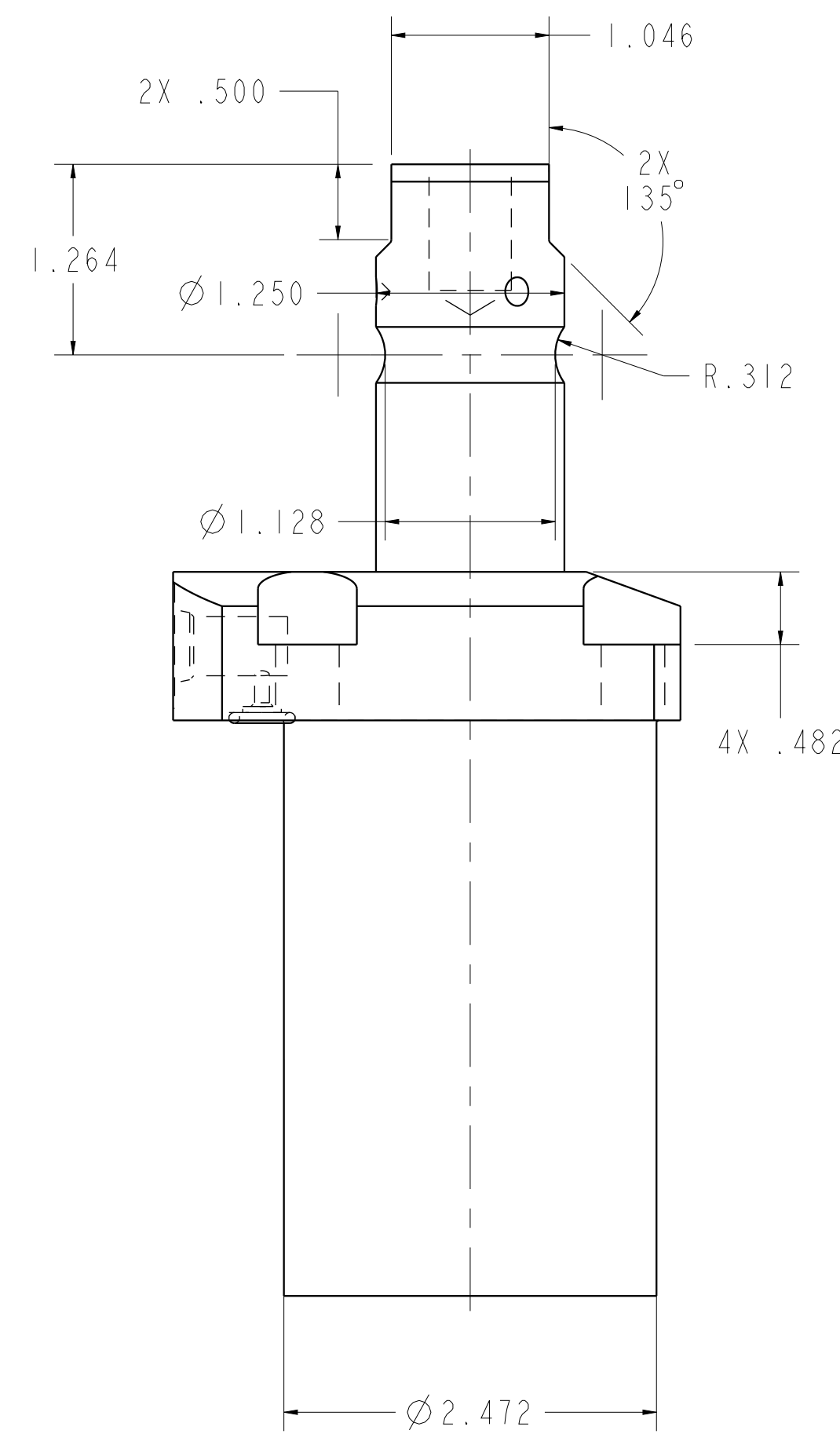
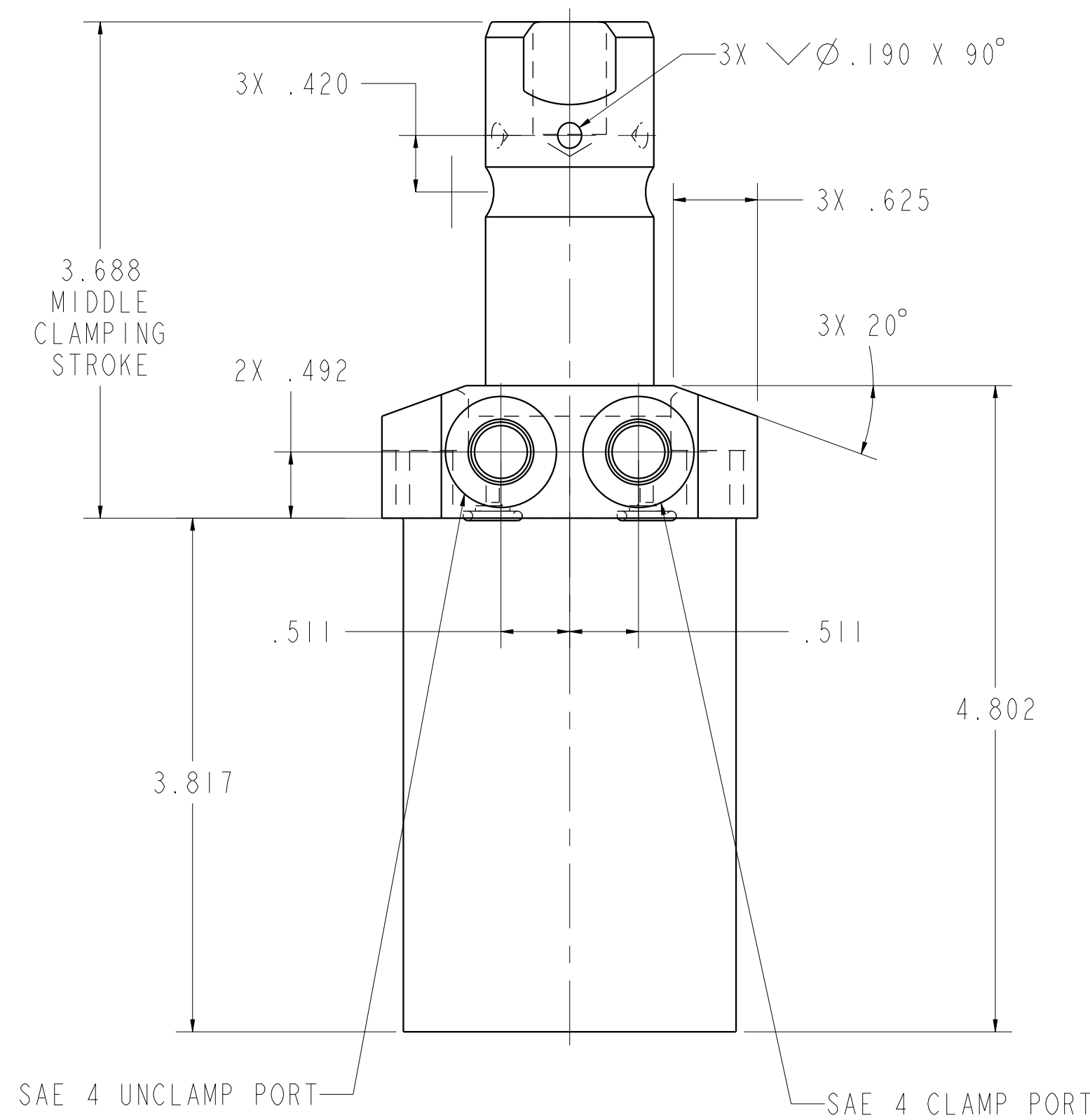
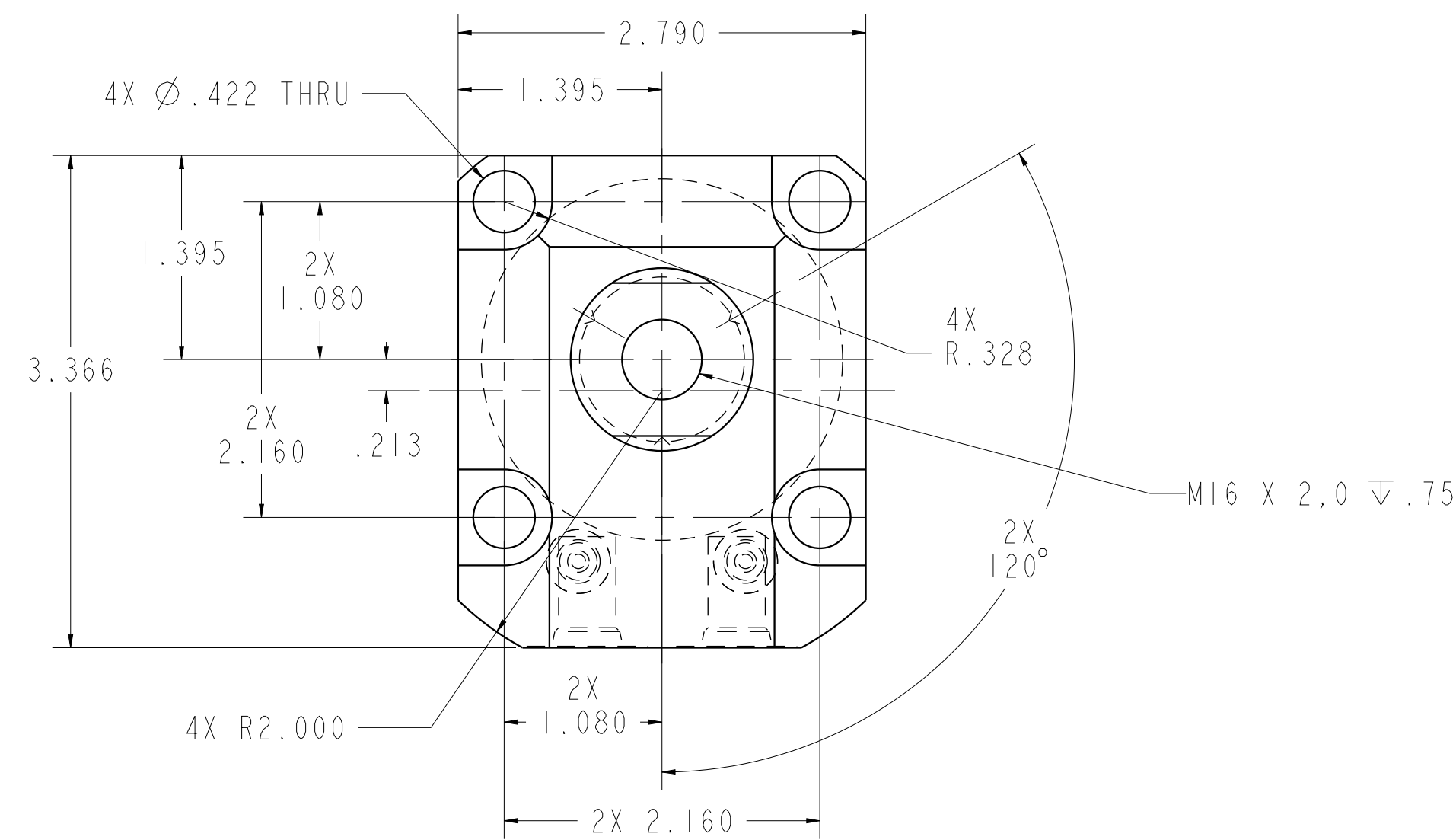
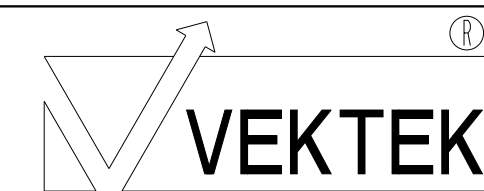


ILC14061804 REV A ECN 3434



CAD CONTROL DRAWING



VEKTEK, INC.  
1334 E. SIXTH AVE. P.O. BOX 625  
EMPORIA, KS. 66801 U.S.A.

A	3434	RELEASE	JDW	05/08/18	14061804	A	SC, LP, TF, TC, 5000, DA, LH, LS
REV	IN ACCORDANCE WITH ECN	EFFECTIVE DATE	REVISED BY	DATE	REFERENCE MODEL	REF REV	
DRW BY:	JDW	DRAWING STATUS: Released			TOLERANCES DO NOT APPLY DIMENSIONS ARE NOMINAL		SIZE D
DATE:	05/08/18	PRODUCTION APPROVED FOR RELEASED STATUS ONLY					ILC14061804 REV A