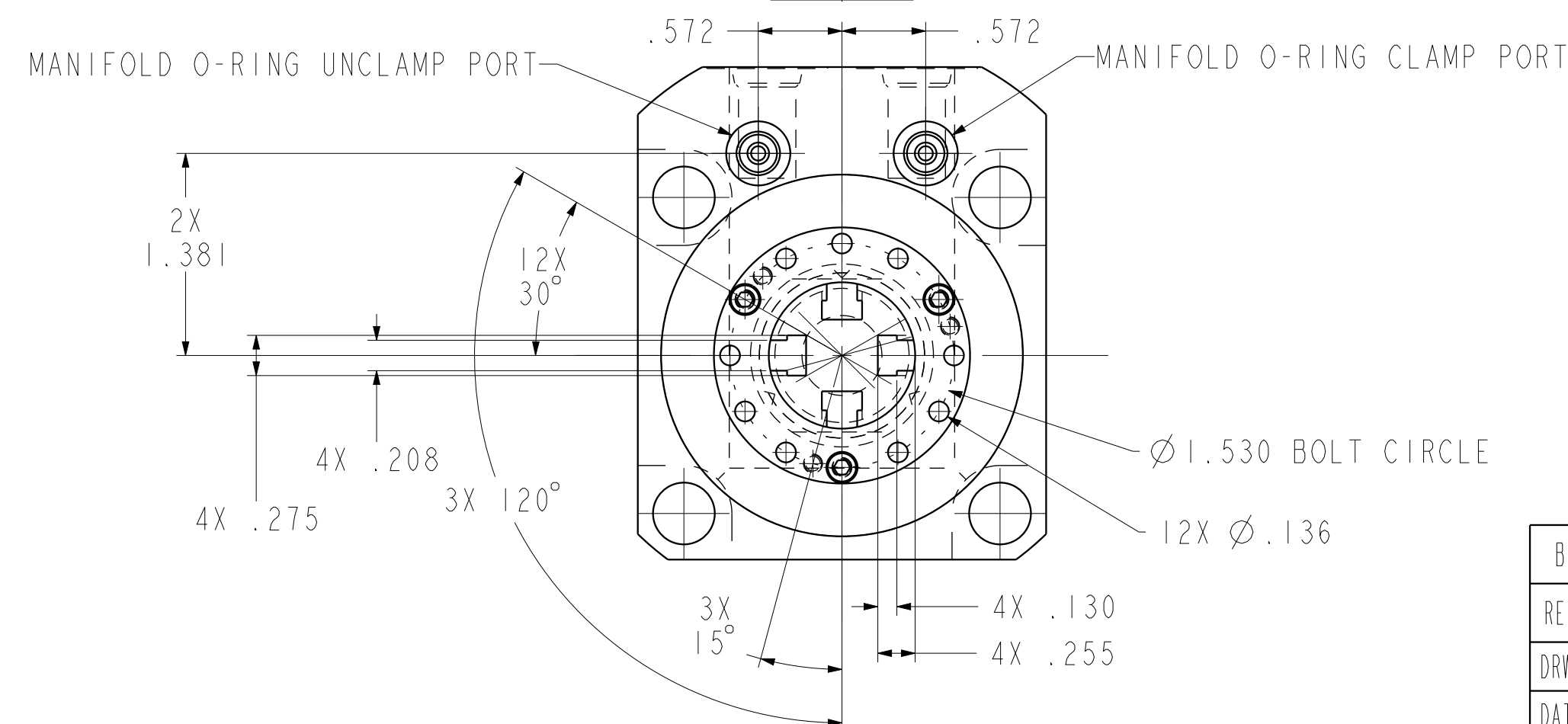
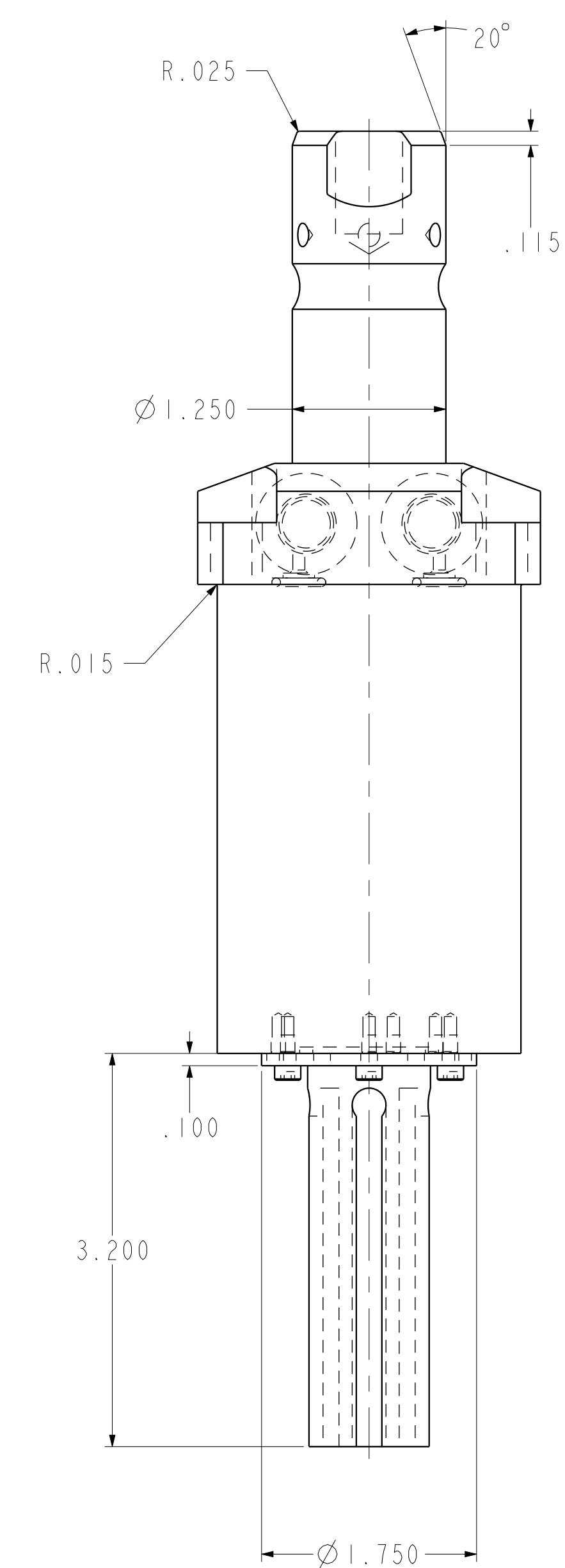
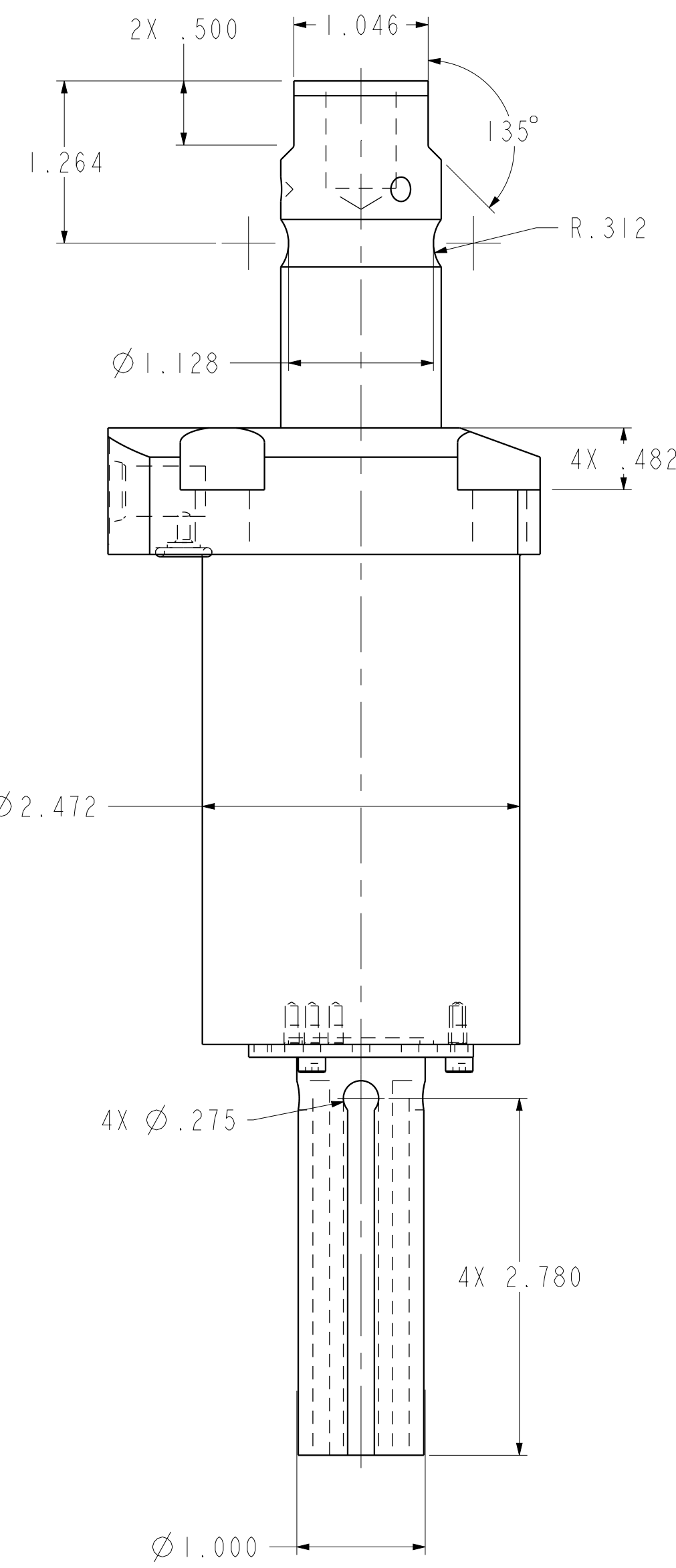
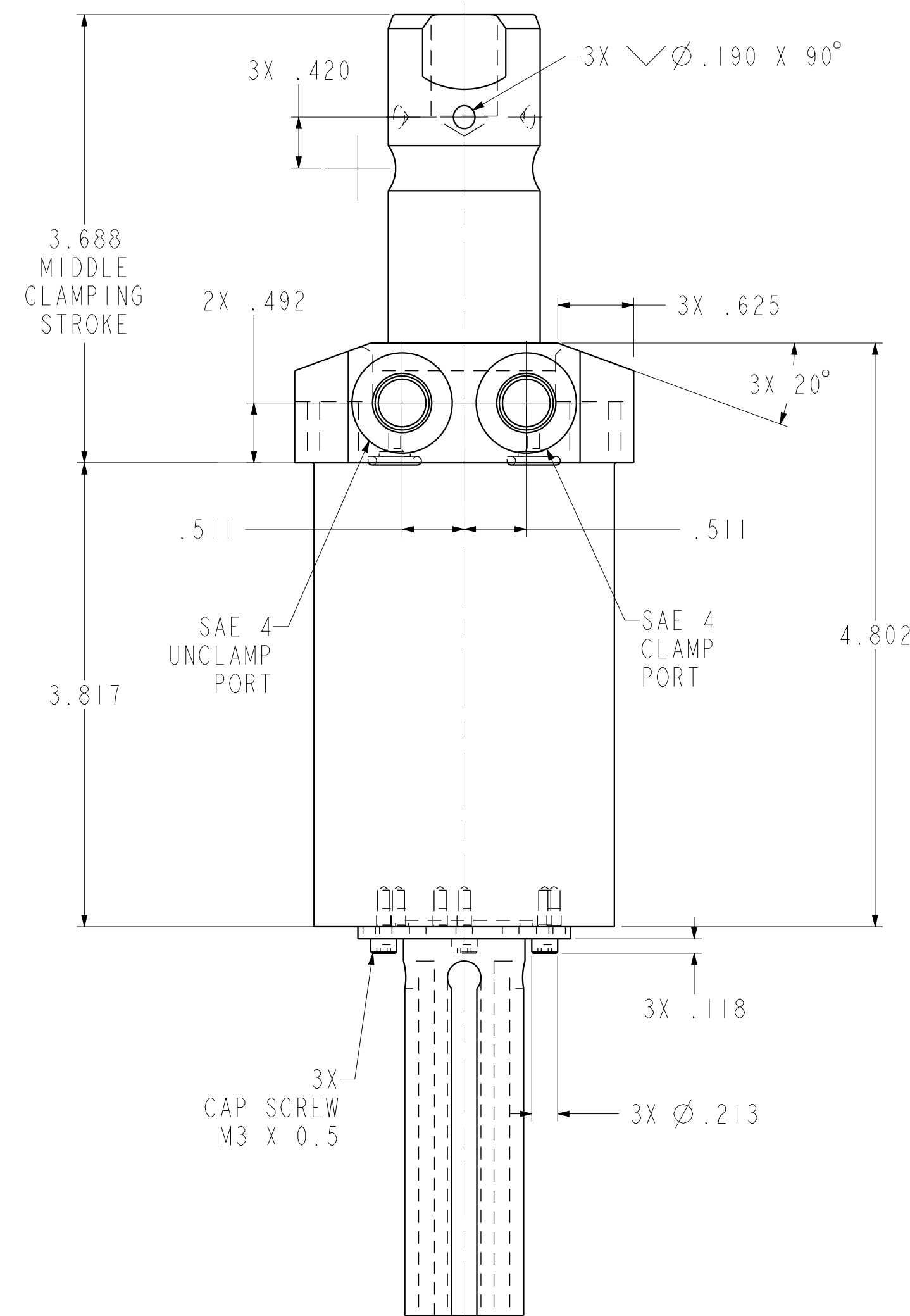
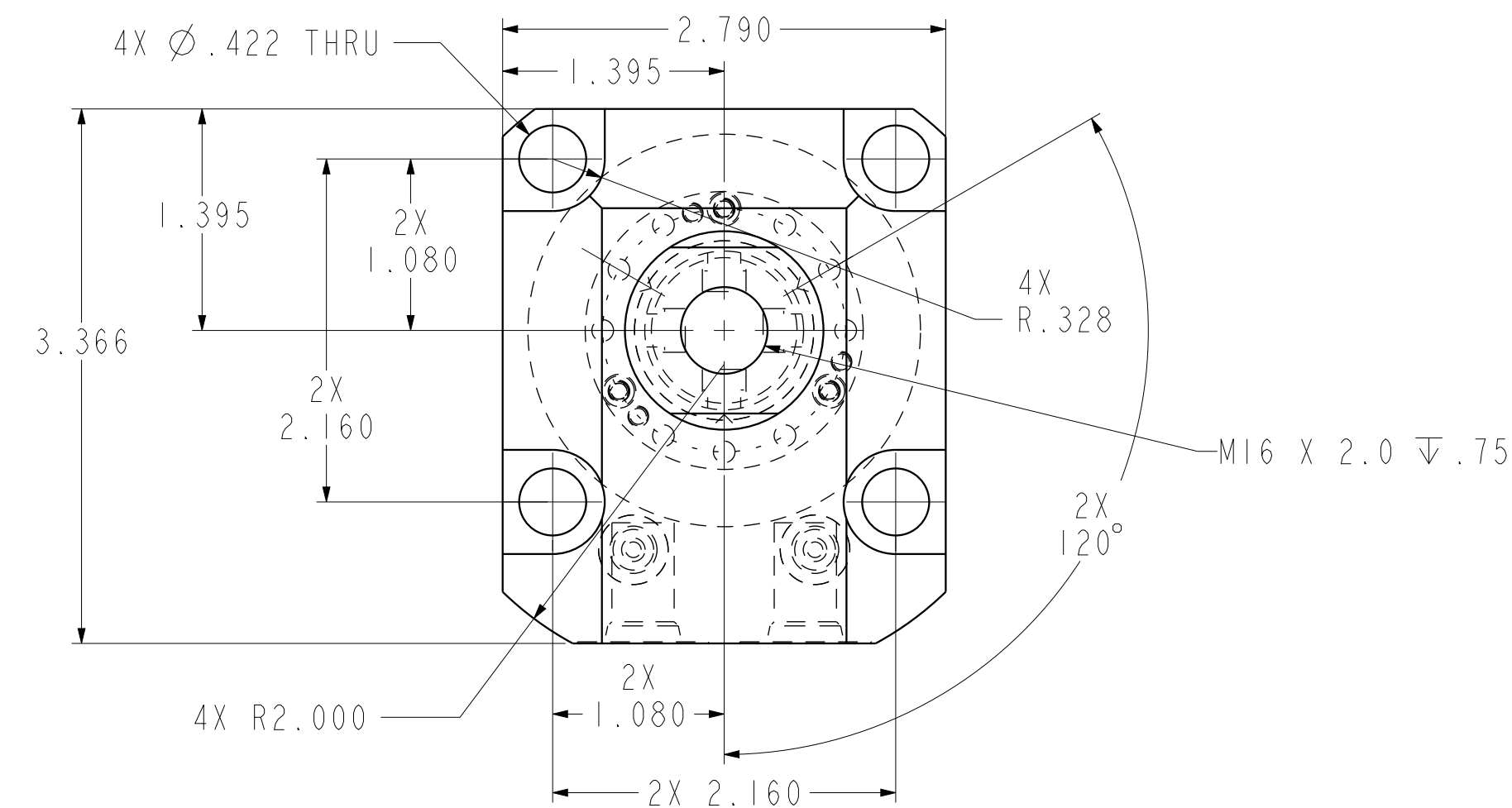


ILC14061804PS REV B ECN 4191



CAD CONTROL DRAWING			
		VEKTEK, INC. 1334 E. SIXTH AVE. P.O. BOX 625 EMPORIA, KS. 66801 U.S.A.	

B	4191	RELEASE	JDW	05/22/20	14061804PS	A	SC, LP, TF, TC, 5000, DA, LH, LS, PS
REV	IN ACCORDANCE WITH ECN	EFFECTIVE DATE	REVISED BY	DATE	REFERENCE MODEL	REF REV	
DRW BY:	JDW	DRAWING STATUS: Released			TOLERANCES DO NOT APPLY DIMENSIONS ARE NOMINAL		SIZE D
DATE:	06/02/18	PRODUCTION APPROVED FOR RELEASED STATUS ONLY			FORM FEG036, Rev. B		REV B