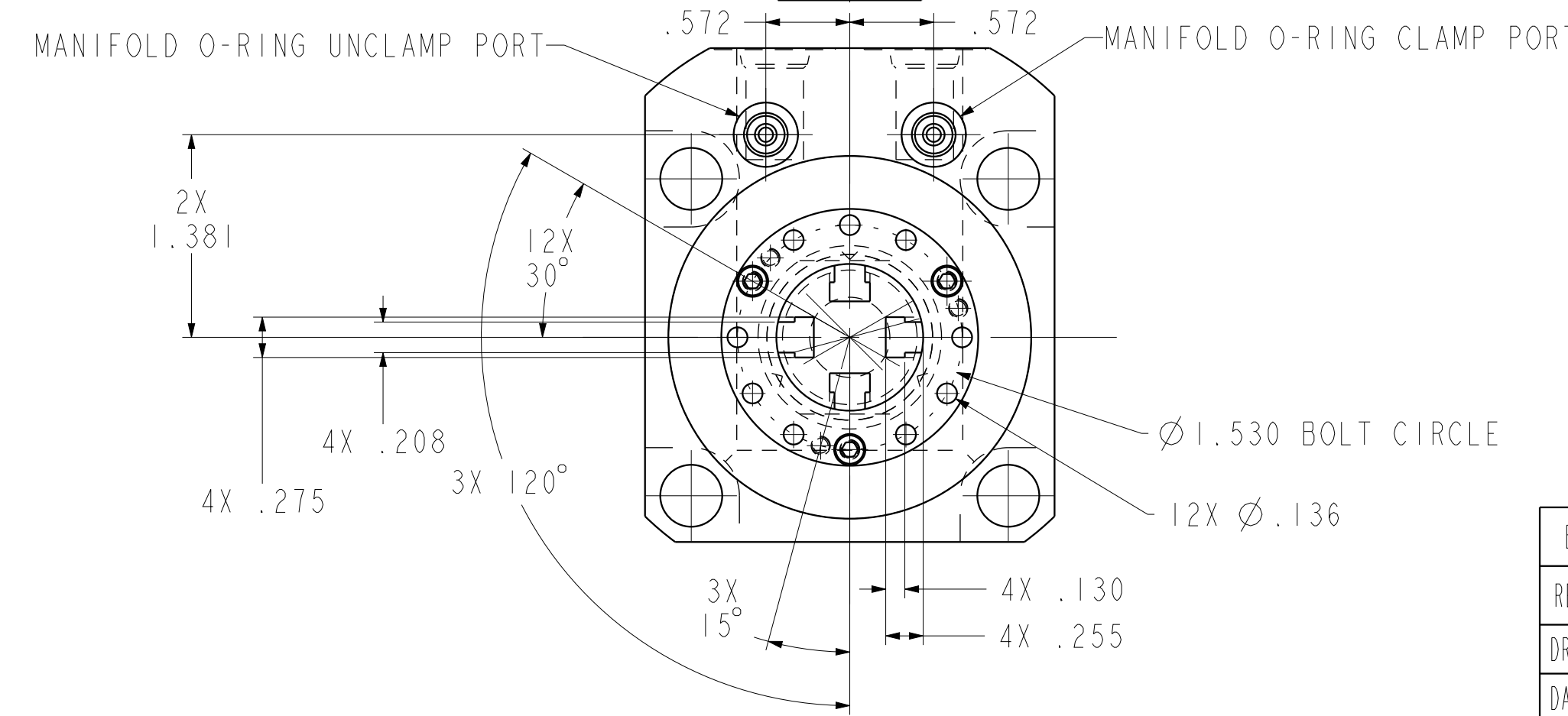
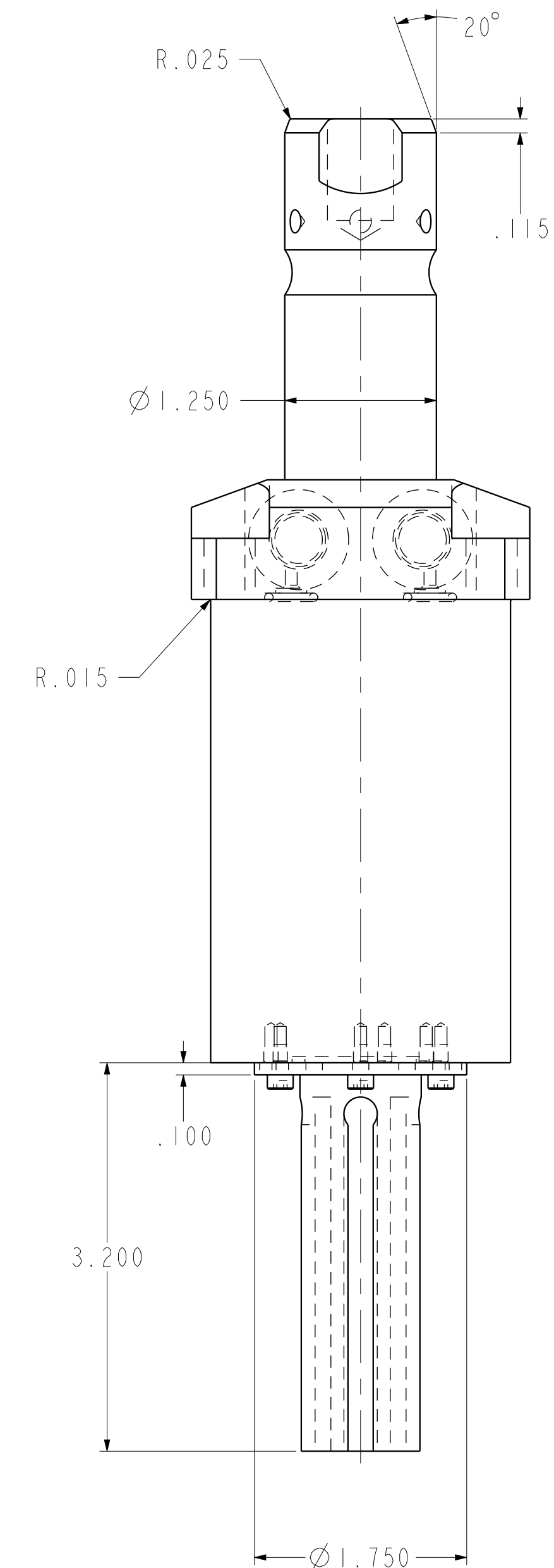
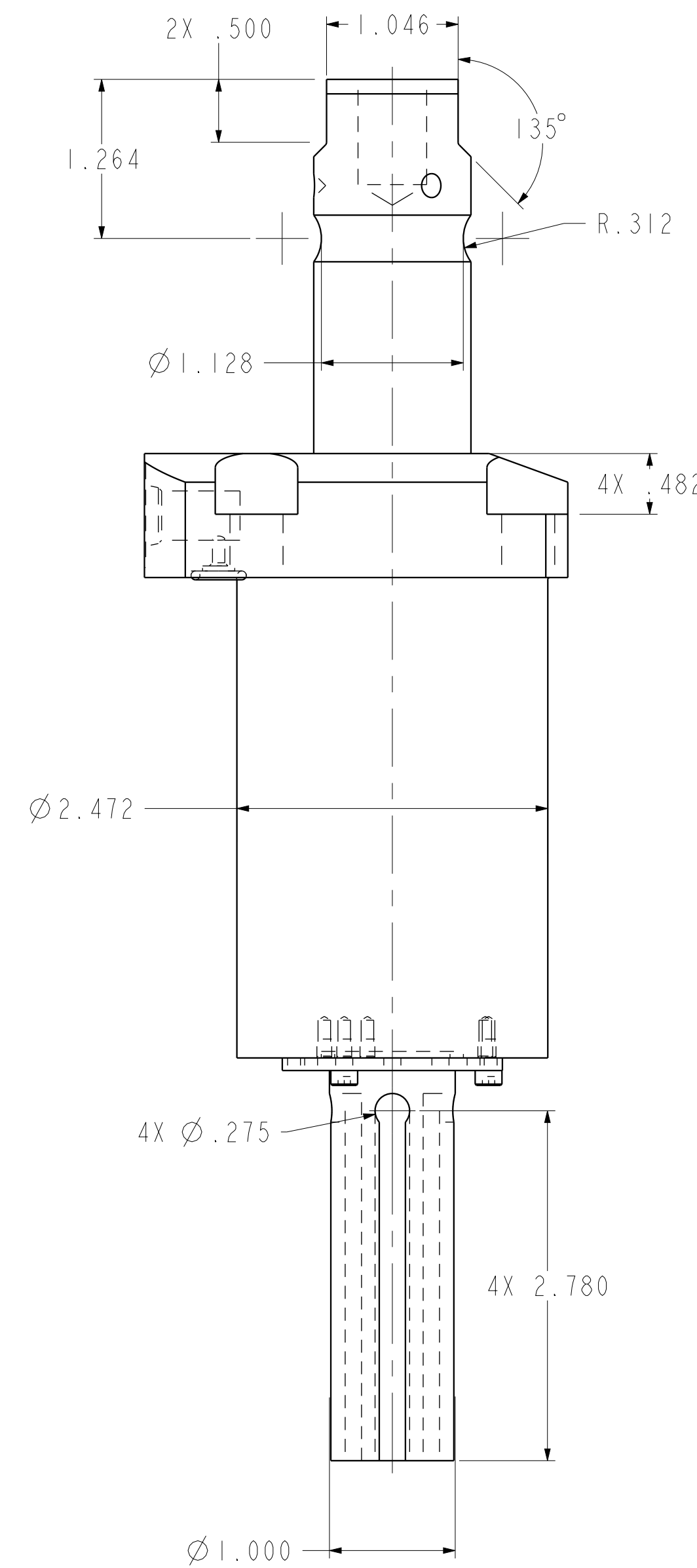
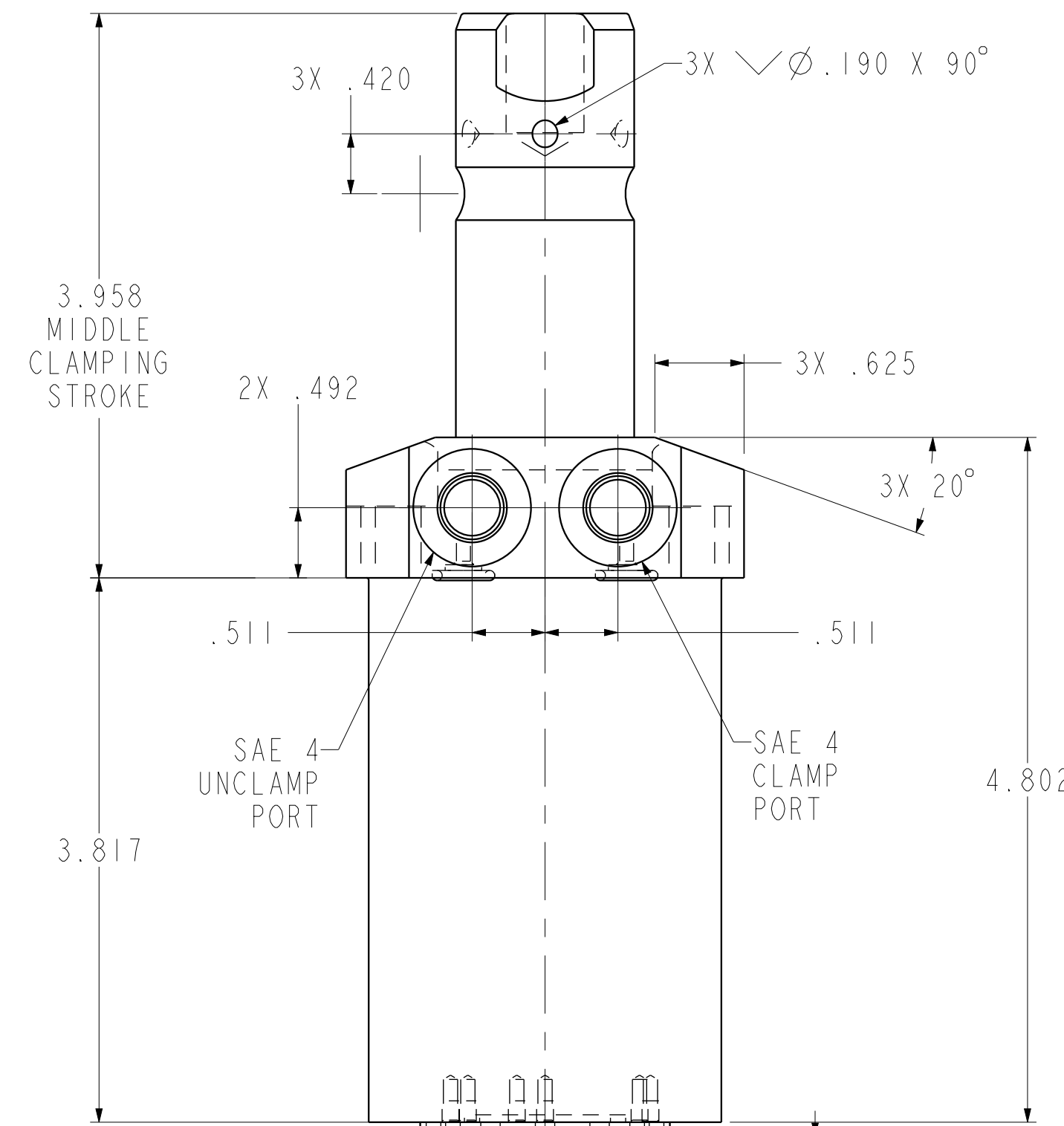
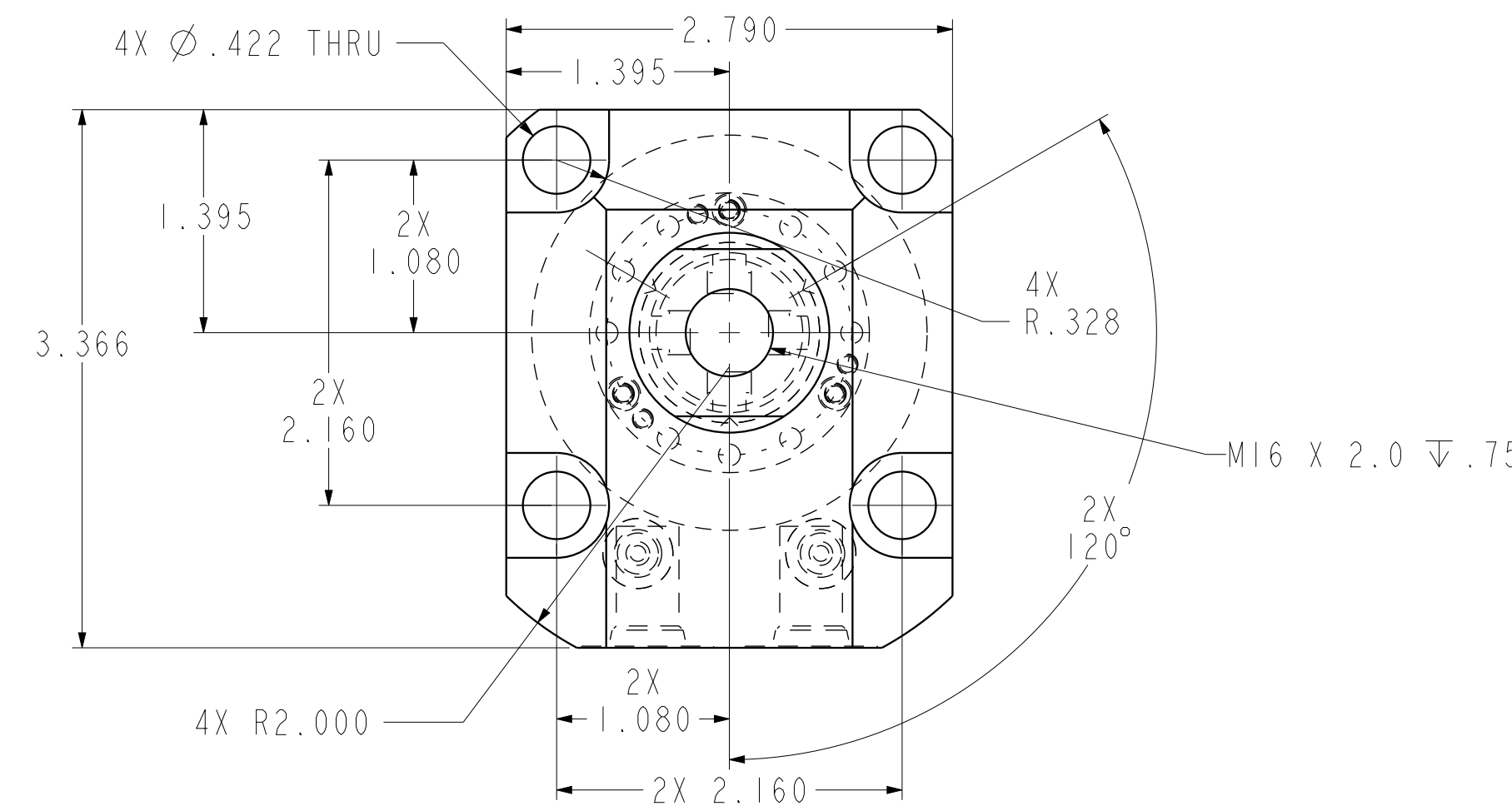
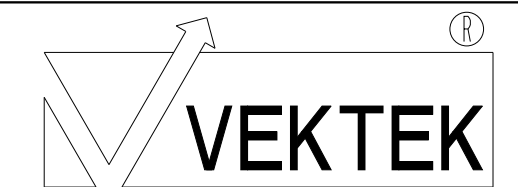


ILC14061805PS REV B ECN 4191



CAD CONTROL DRAWING



VEKTEK, INC.
1334 E. SIXTH AVE. P.O. BOX 625
EMPORIA, KS. 66801 U.S.A.

B	4191	RELEASE	JDW	05/22/20	14061805PS	A	SC,LP,TF,TC,5000,DA,STR,LS,PS
REV	IN ACCORDANCE WITH ECN	EFFECTIVE DATE	REVISED BY	DATE	REFERENCE MODEL	REF REV	
DRW BY:	JDW	DRAWING STATUS: Released			TOLERANCES DO NOT APPLY DIMENSIONS ARE NOMINAL		SIZE D
DATE:	06/02/18	PRODUCTION APPROVED FOR RELEASED STATUS ONLY			I L C 1 4 0 6 1 8 0 5 P S		REV B