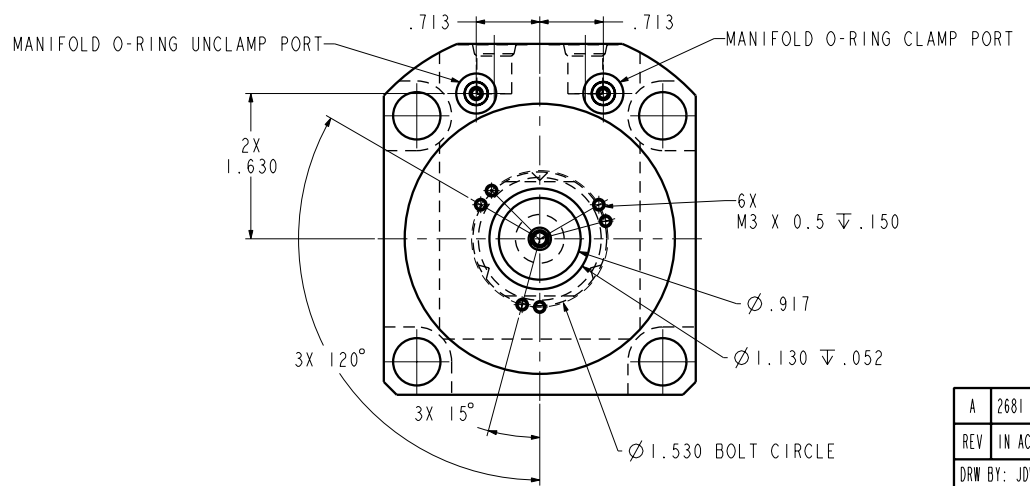


ILCI4062101PR REV A ECN 2681



**CAD CONTROL DRAWING**



VEKTEK, INC.  
1334 E. SIXTH AVE. P.O. BOX 625  
EMPORIA, KS. 66801 U.S.A.

REV	A	2681	RELEASE	JDW	06/30/14	14062101PR	A	SC, LP, TF, TC, 7500, DA, LH, PR
REV	IN ACCORDANCE WITH ECN		EFFECTIVE DATE	REVISED BY	DATE	REFERENCE MODEL	REF REV	
DRW BY:	JDW		DRAWING STATUS: <b>Released</b>			TOLERANCES DO NOT APPLY		SIZE
DATE:	06/30/14		PRODUCTION APPROVED FOR RELEASED STATUS ONLY			DIMENSIONS ARE NOMINAL		D ILCI4062101PR REV A

FORM FEG036, Rev. B