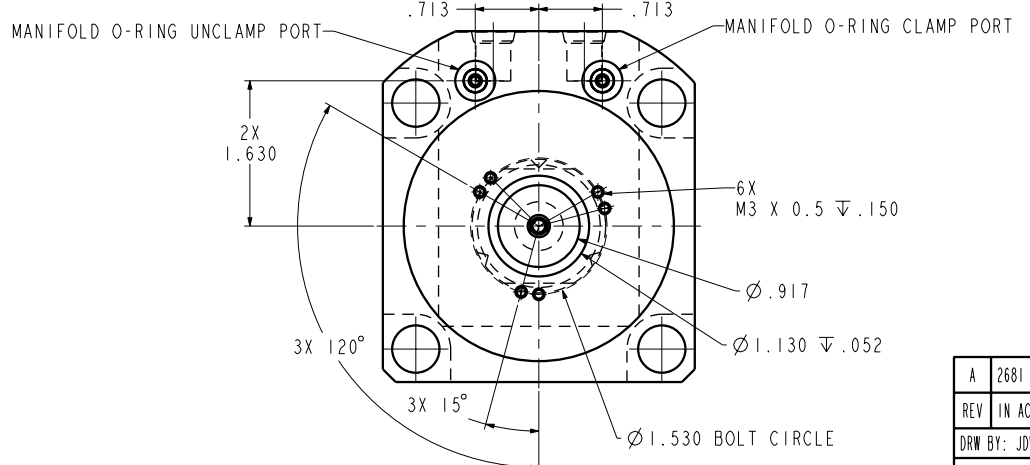


ILCI4062103PR REV A ECN 2681



REV	IN ACCORDANCE WITH ECN	EFFECTIVE DATE	REVISED BY	DATE	REFERENCE MODEL	REF REV
DRW BY:	DRAWING STATUS: Released		TOLERANCES DO NOT APPLY DIMENSIONS ARE NOMINAL			
DATE:	PRODUCTION APPROVED FOR RELEASED STATUS ONLY		SIZE D ILCI4062103PR REV A			

CAD CONTROL DRAWING

VEKTEK, INC.
1334 E. SIXTH AVE. P.O. BOX 625
EMPORIA, KS. 66801 U.S.A.

A	2681	RELEASE	JDW	06/30/14	14062103PR	A	SC, LP, TF, TC, 7500, DA, RH, LS, PR
FORM FEG036, Rev. B							