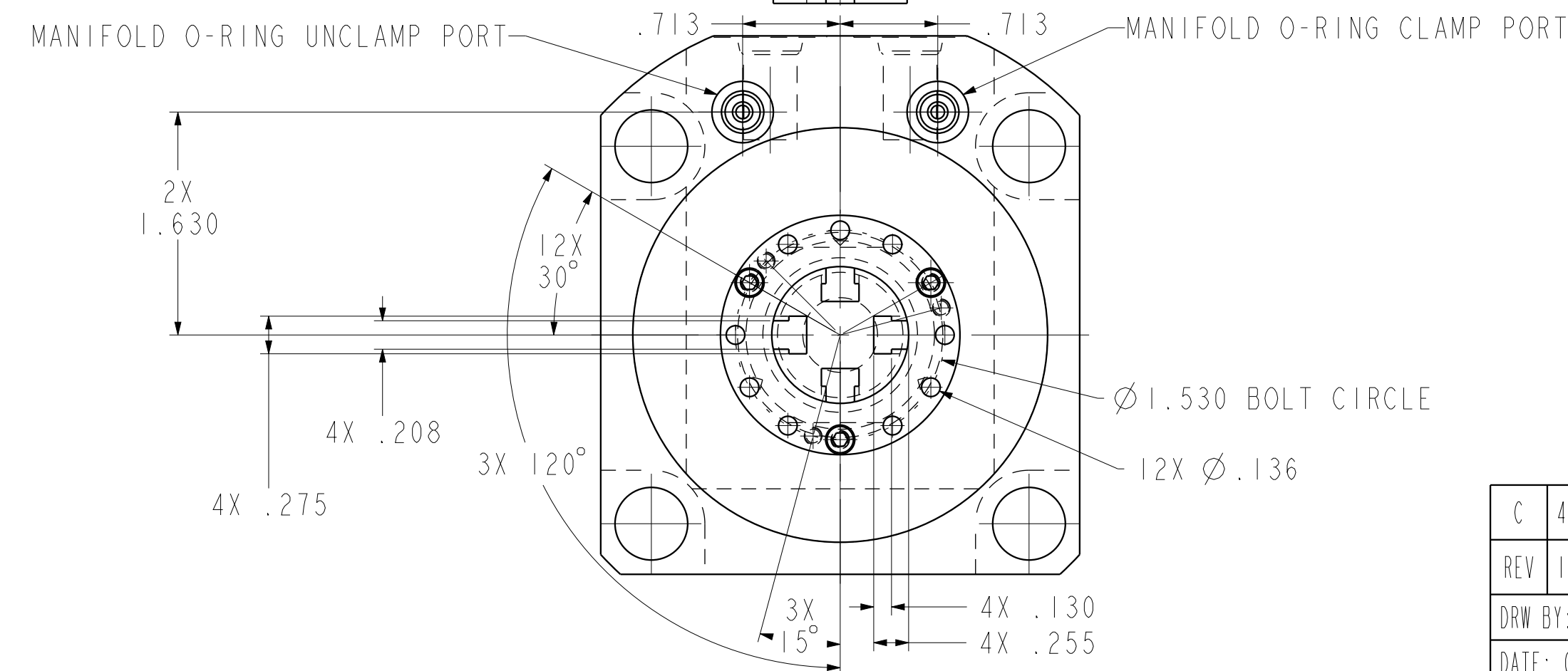
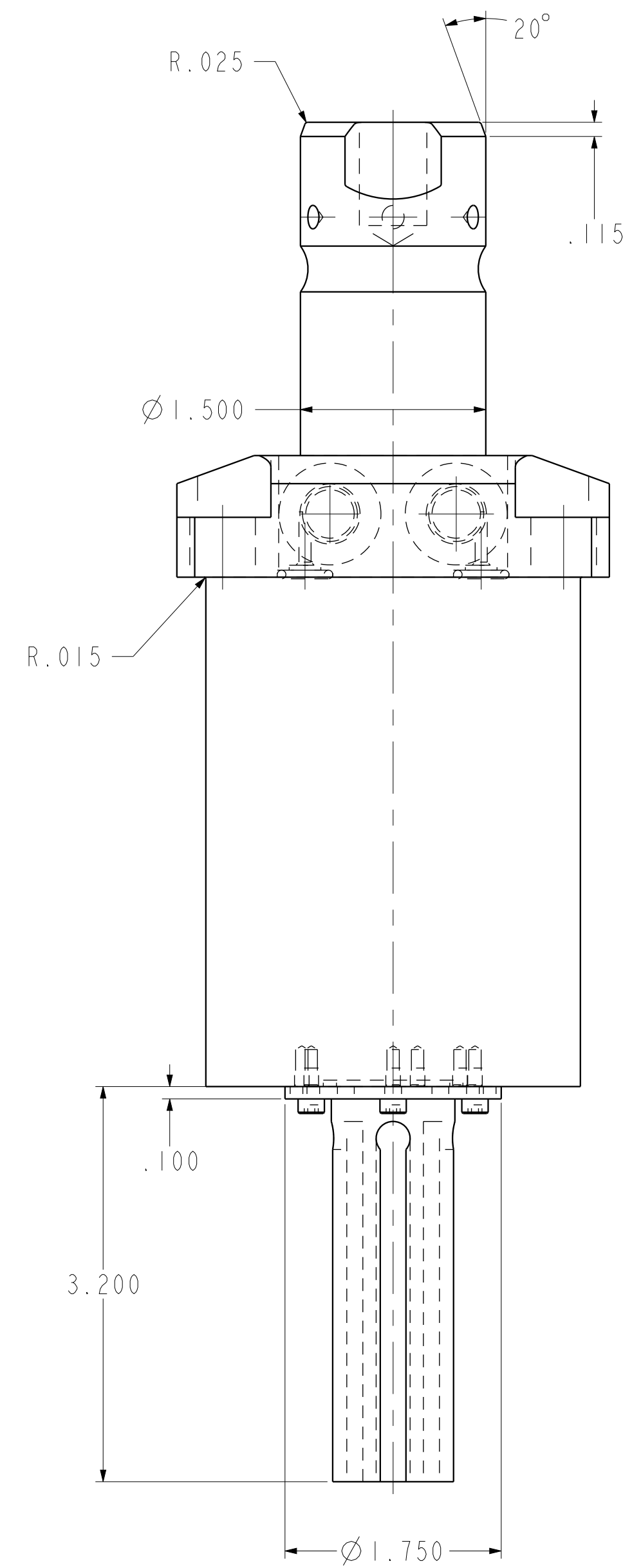
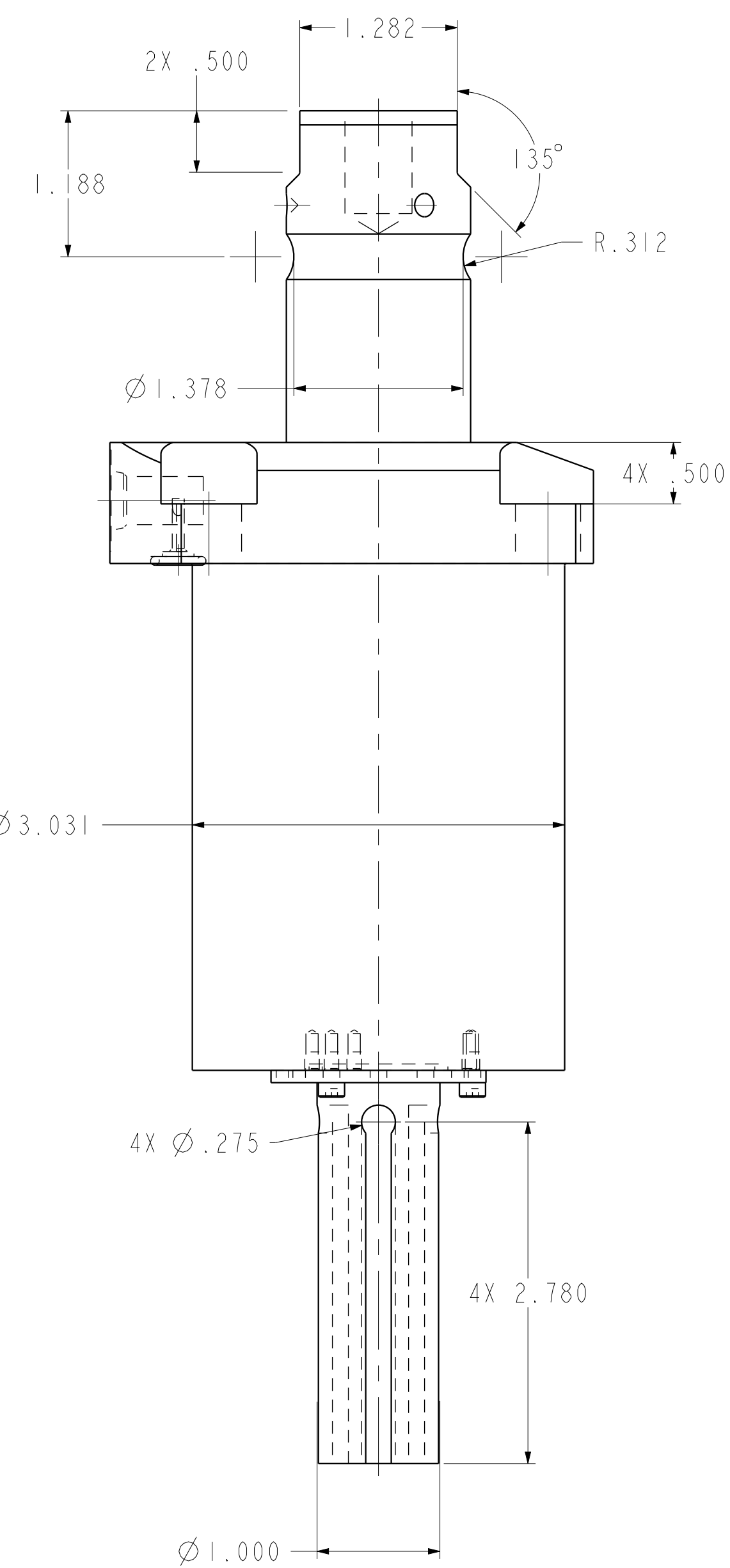
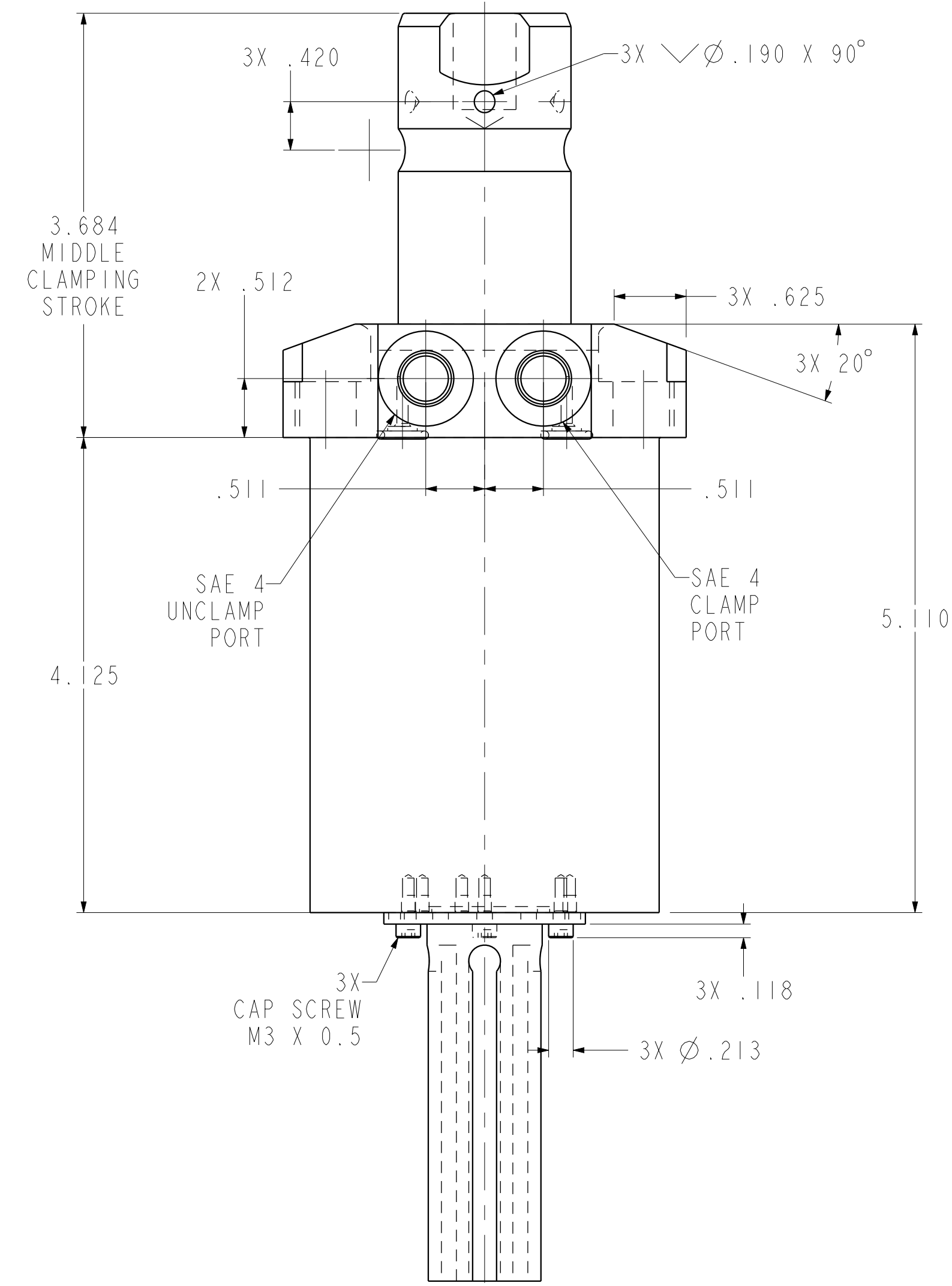
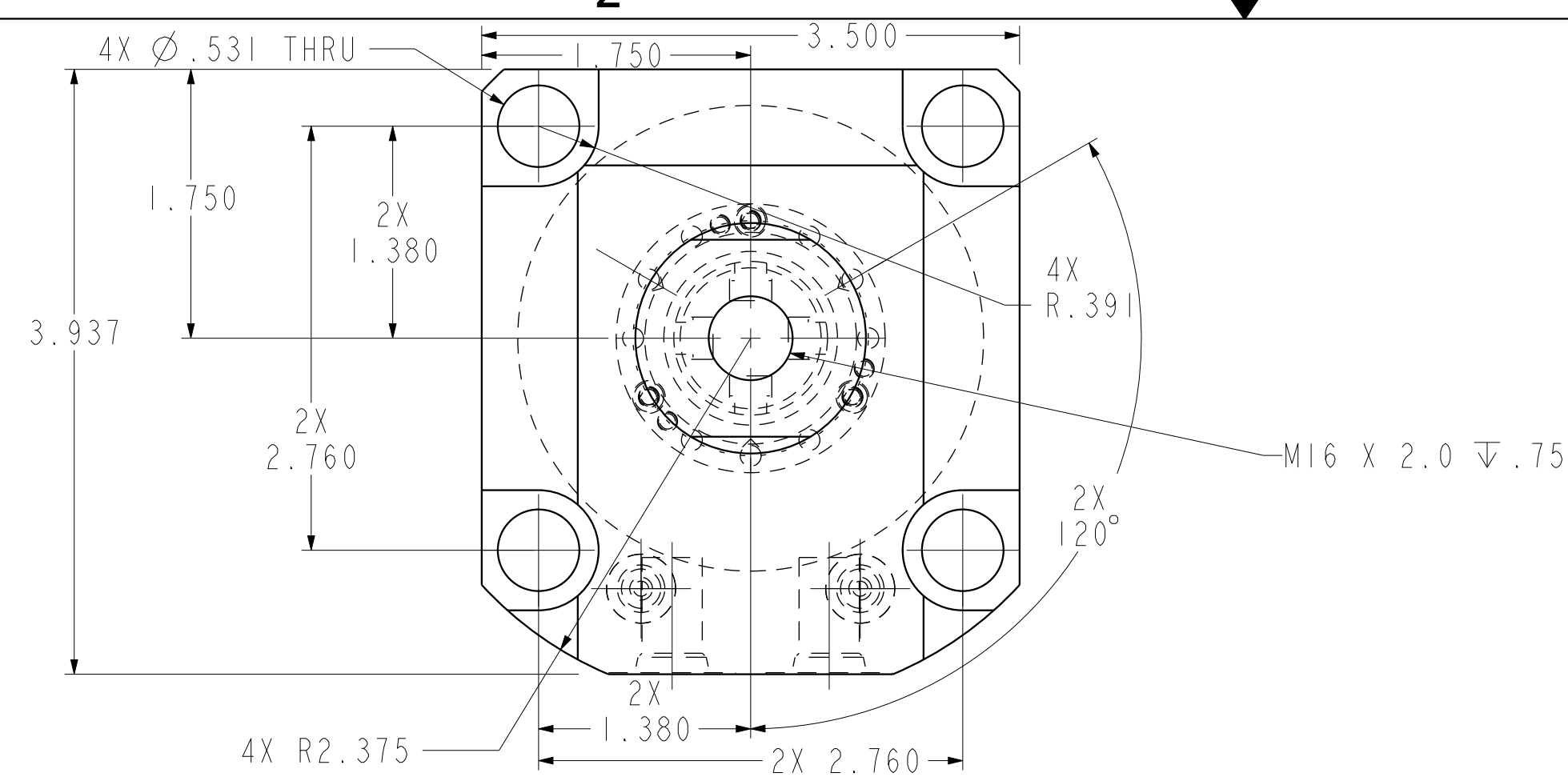


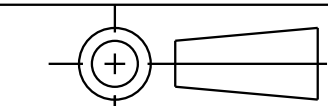
ILCI4062103PS REV C ECN 4191



CAD CONTROL DRAWING



VEKTEK, INC.
1334 E. SIXTH AVE. P.O. BOX 625
EMPORIA, KS. 66801 U.S.A.



C	4191	RELEASE	JDW	05/22/20	14062103PS	A	SC, LP, TF, TC, 7500, DA, RH, LS, PS
REV	IN ACCORDANCE WITH ECN	EFFECTIVE DATE	REVISED BY	DATE	REFERENCE MODEL	REF REV	
DRW BY:	JDW	DRAWING STATUS: Released			TOLERANCES DO NOT APPLY DIMENSIONS ARE NOMINAL		SIZE D
DATE:	06/30/14	PRODUCTION APPROVED FOR RELEASED STATUS ONLY			ILCI4062103PS	REV C	FORM FEG036, Rev. B