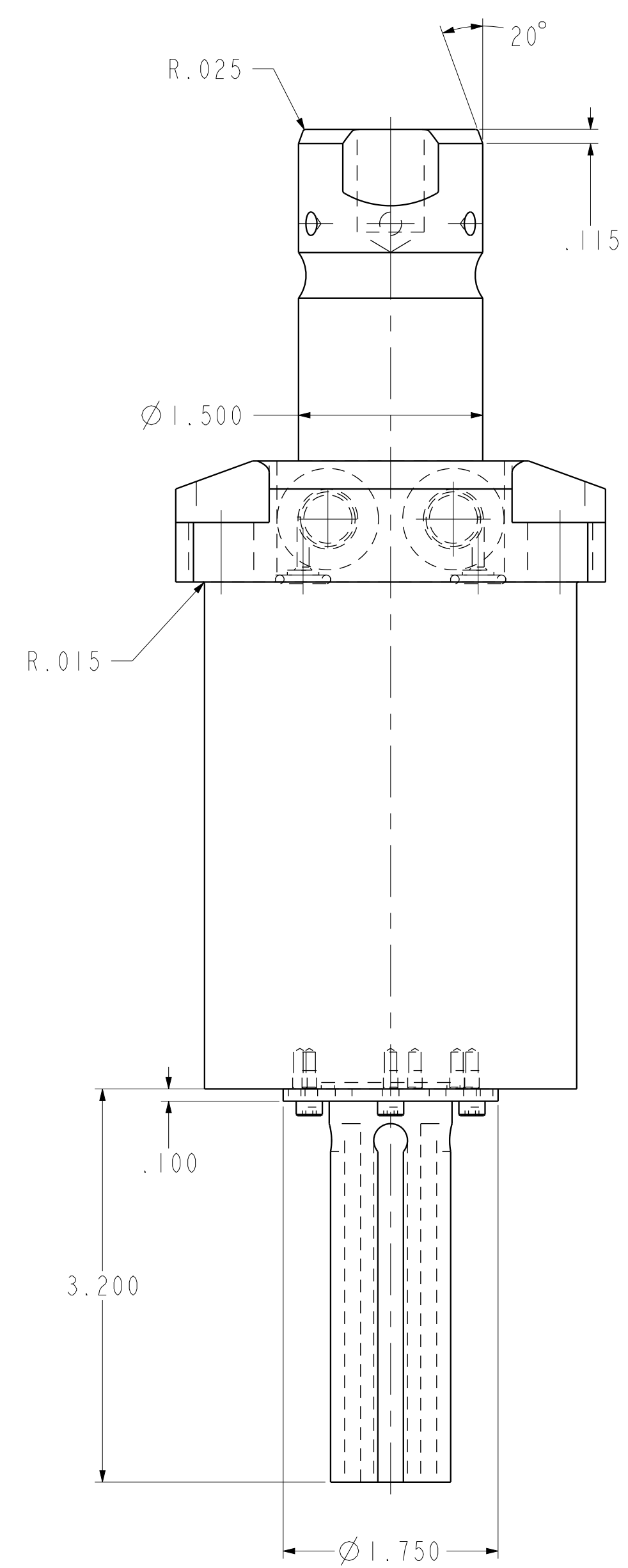
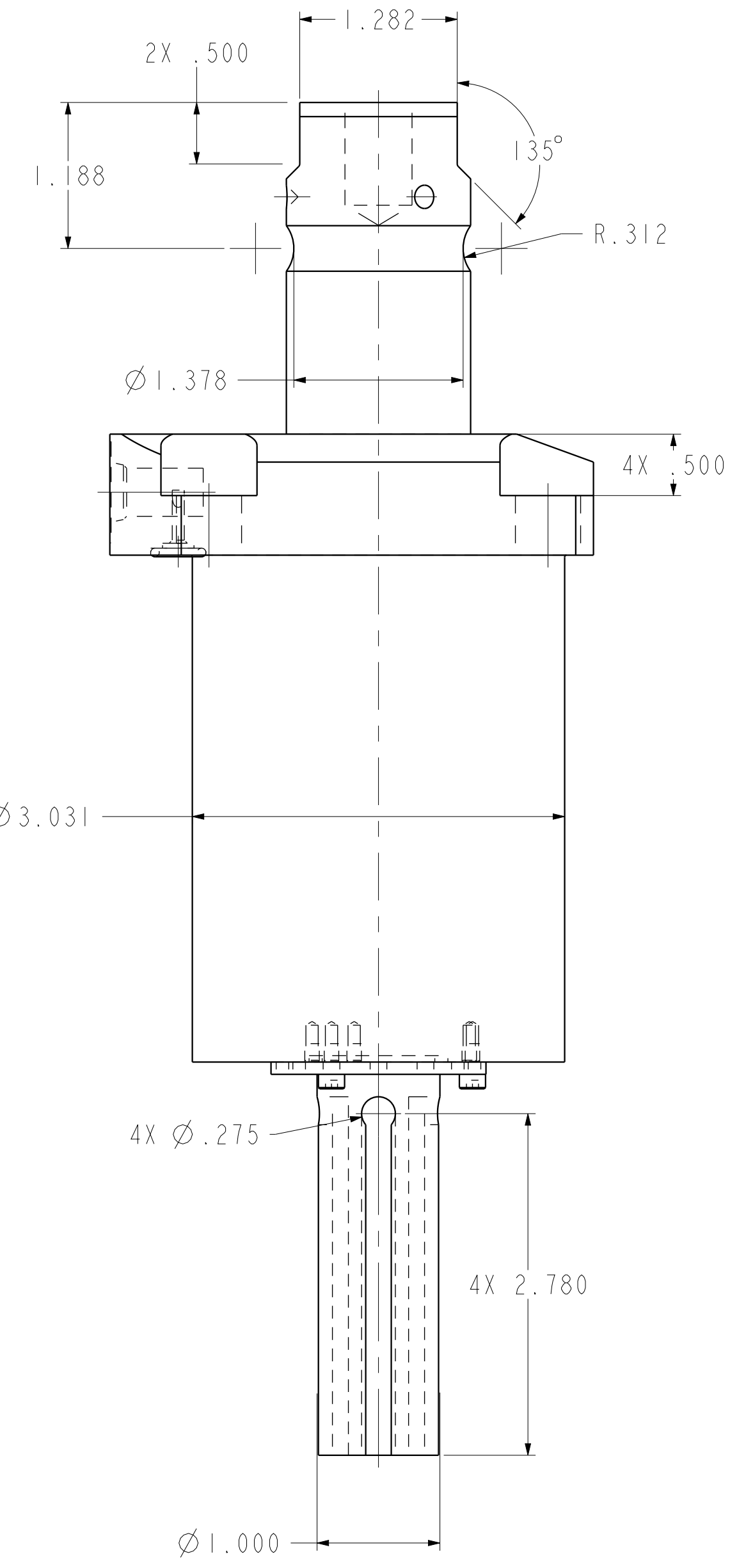
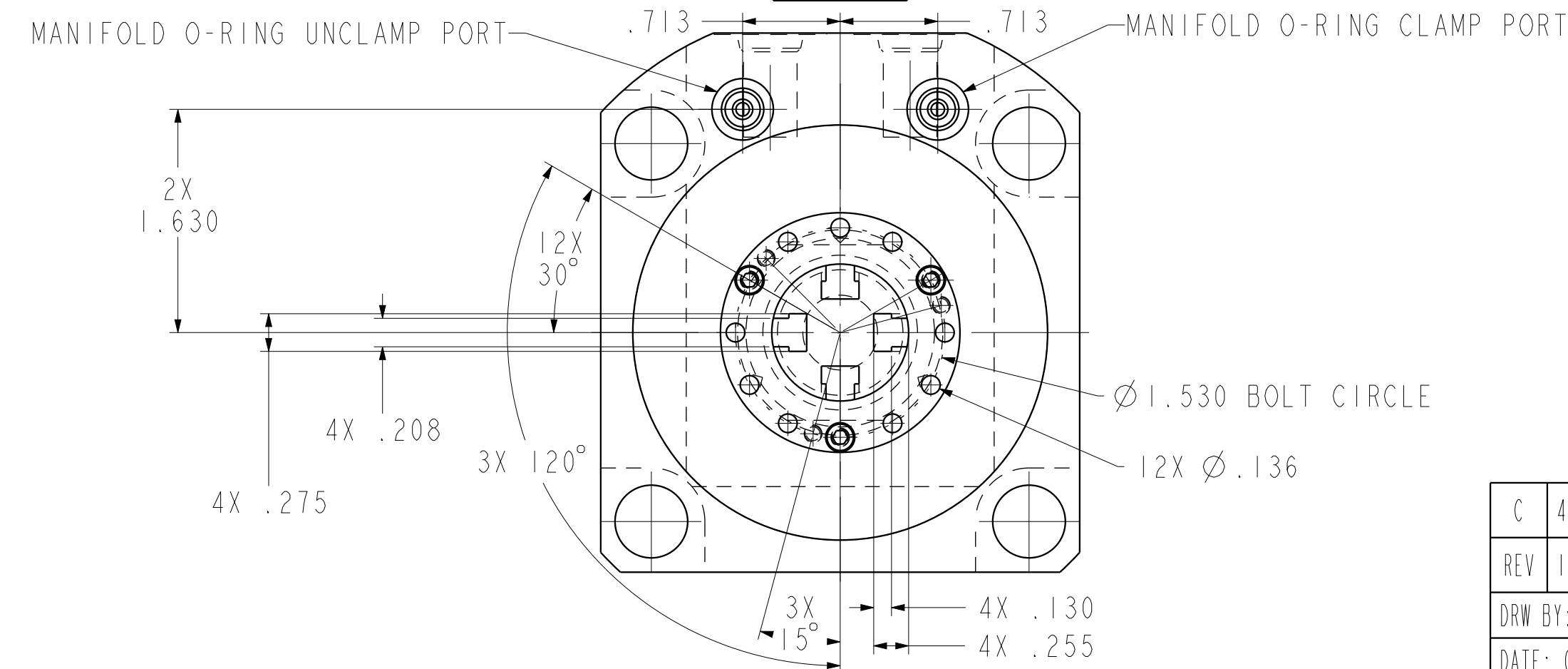
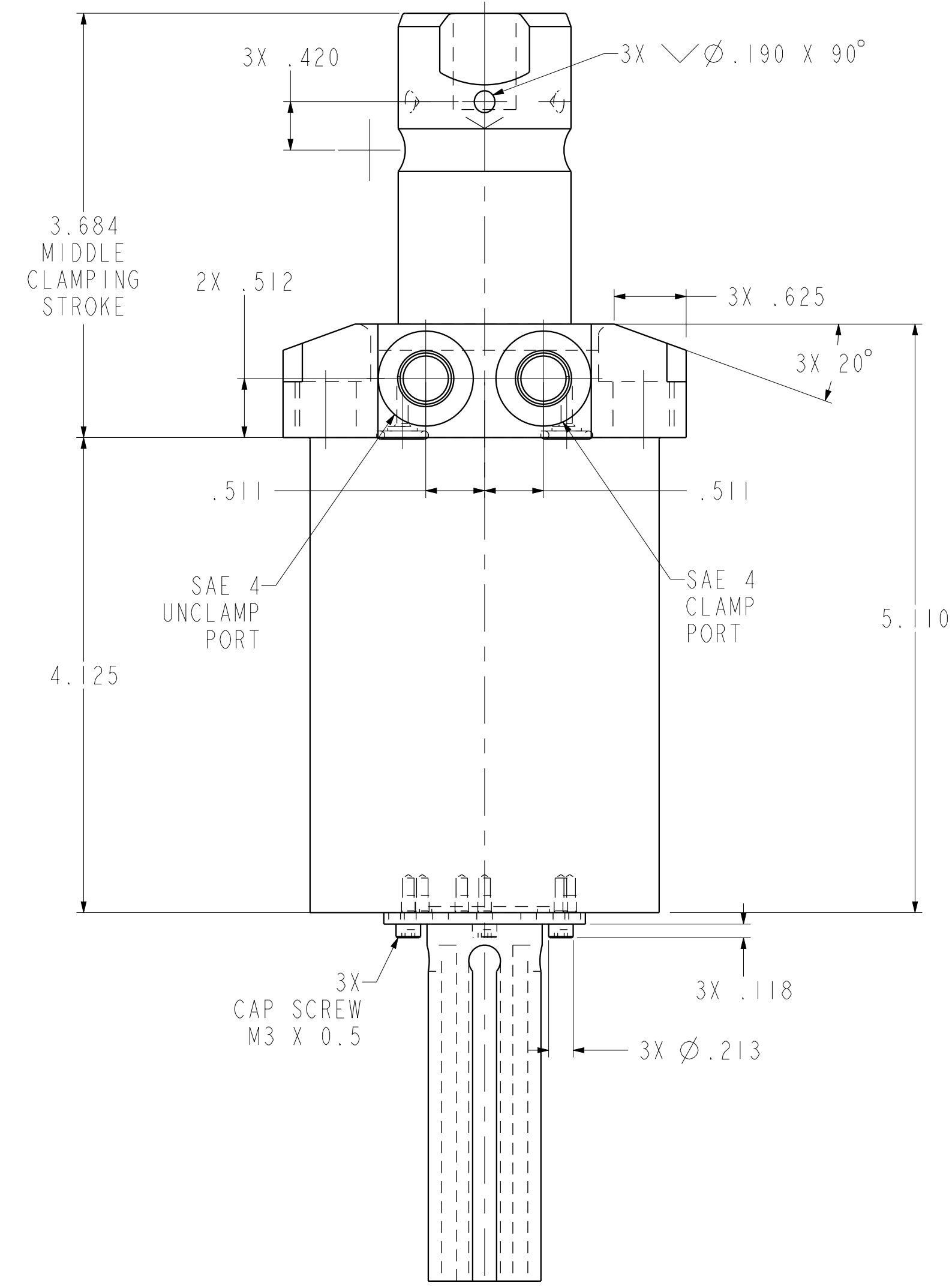
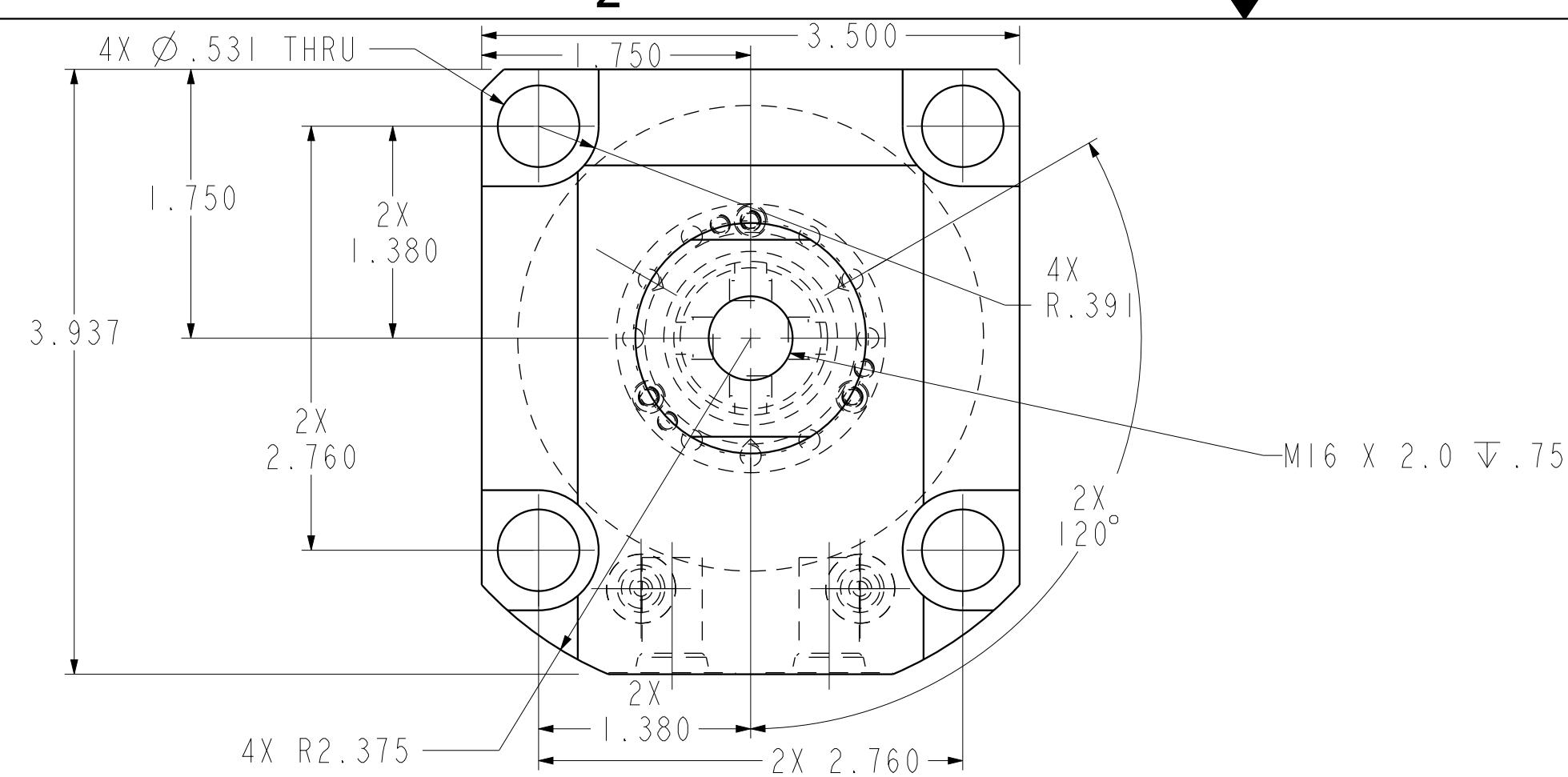


ILC14062104PS REV C ECN 4191



CAD CONTROL DRAWING



VEKTEK, INC.  
1334 E. SIXTH AVE. P.O. BOX 625  
EMPORIA, KS. 66801 U.S.A.

C	4191	RELEASE	JDW	05/22/20	14062104PS	A	SC, LP, TF, TC, 7500, DA, LH, LS, PS
REV	IN ACCORDANCE WITH ECN	EFFECTIVE DATE	REVISED BY	DATE	REFERENCE MODEL	REF REV	
DRW BY:	JDW	DRAWING STATUS: Released			TOLERANCES DO NOT APPLY DIMENSIONS ARE NOMINAL		SIZE D
DATE:	06/30/14	PRODUCTION APPROVED FOR RELEASED STATUS ONLY			ILC14062104PS		REV C