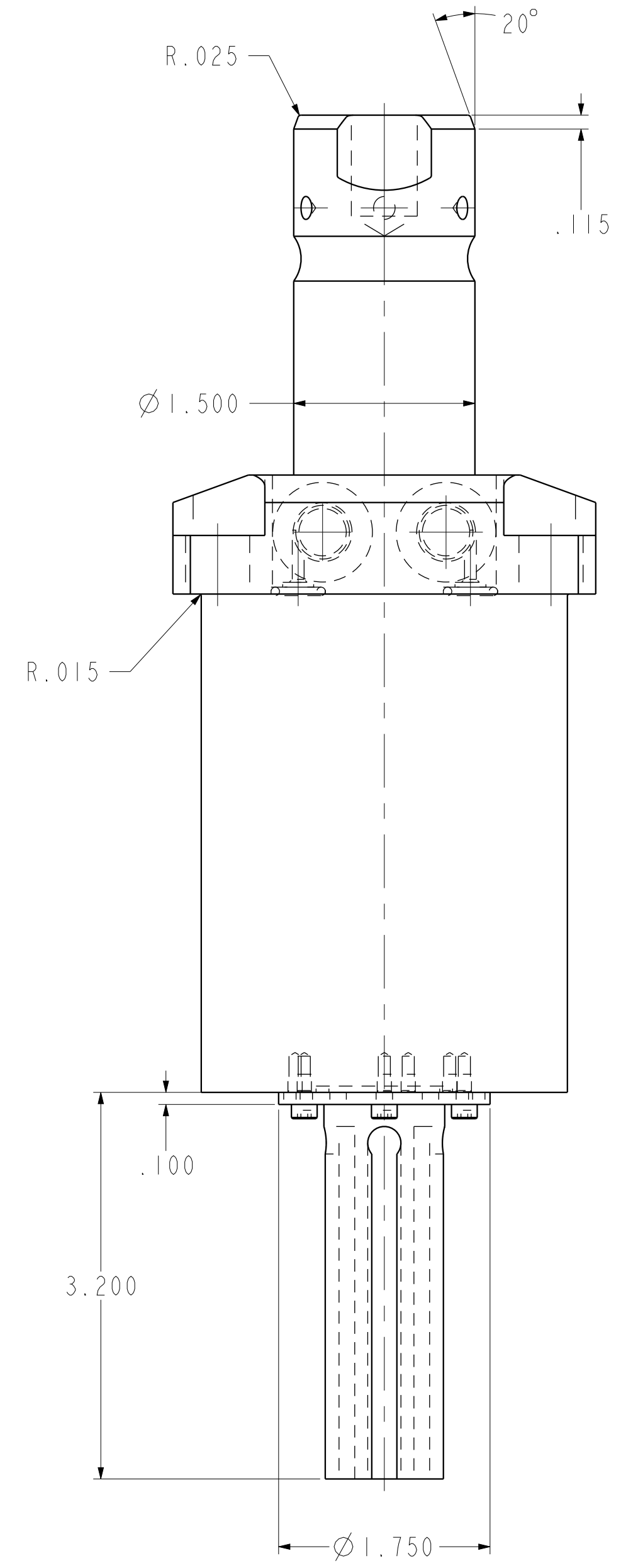
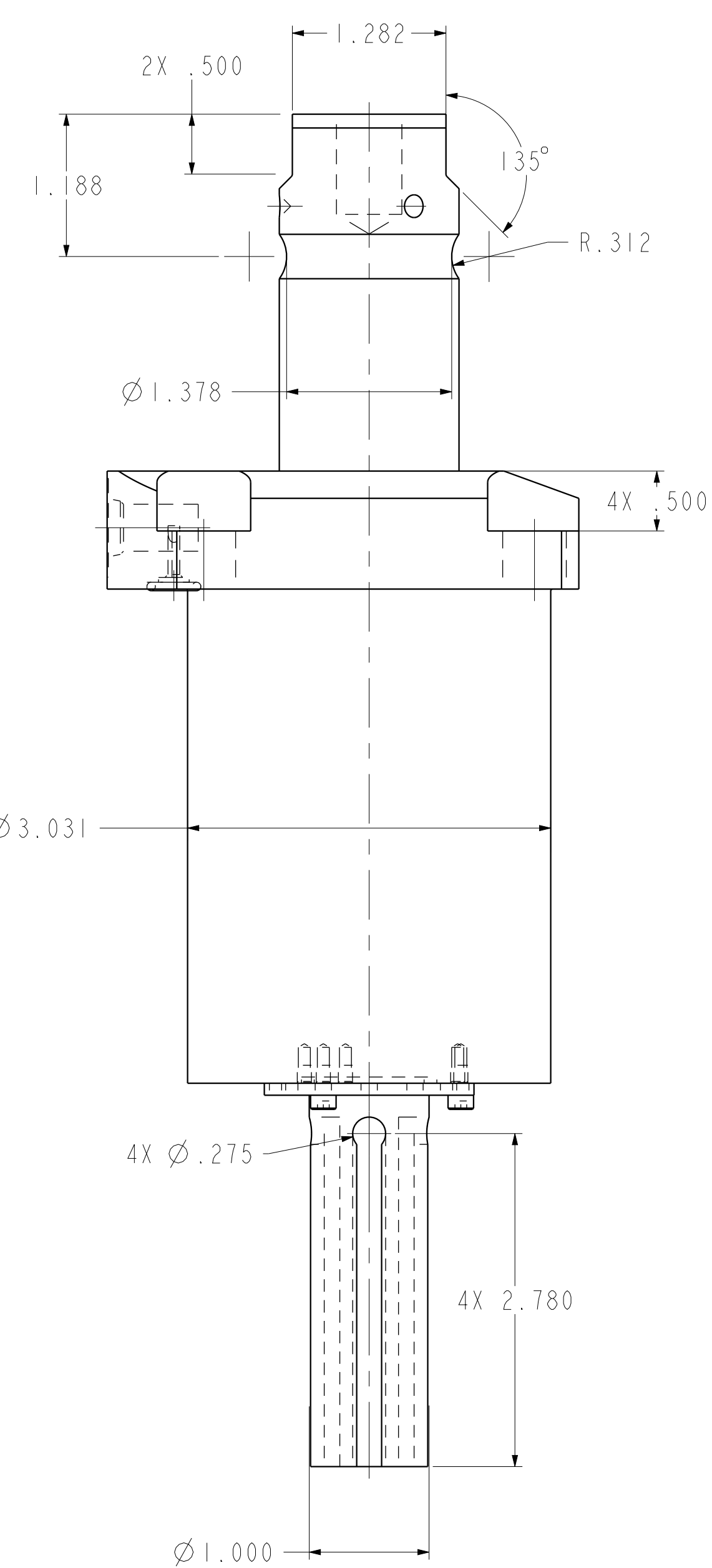
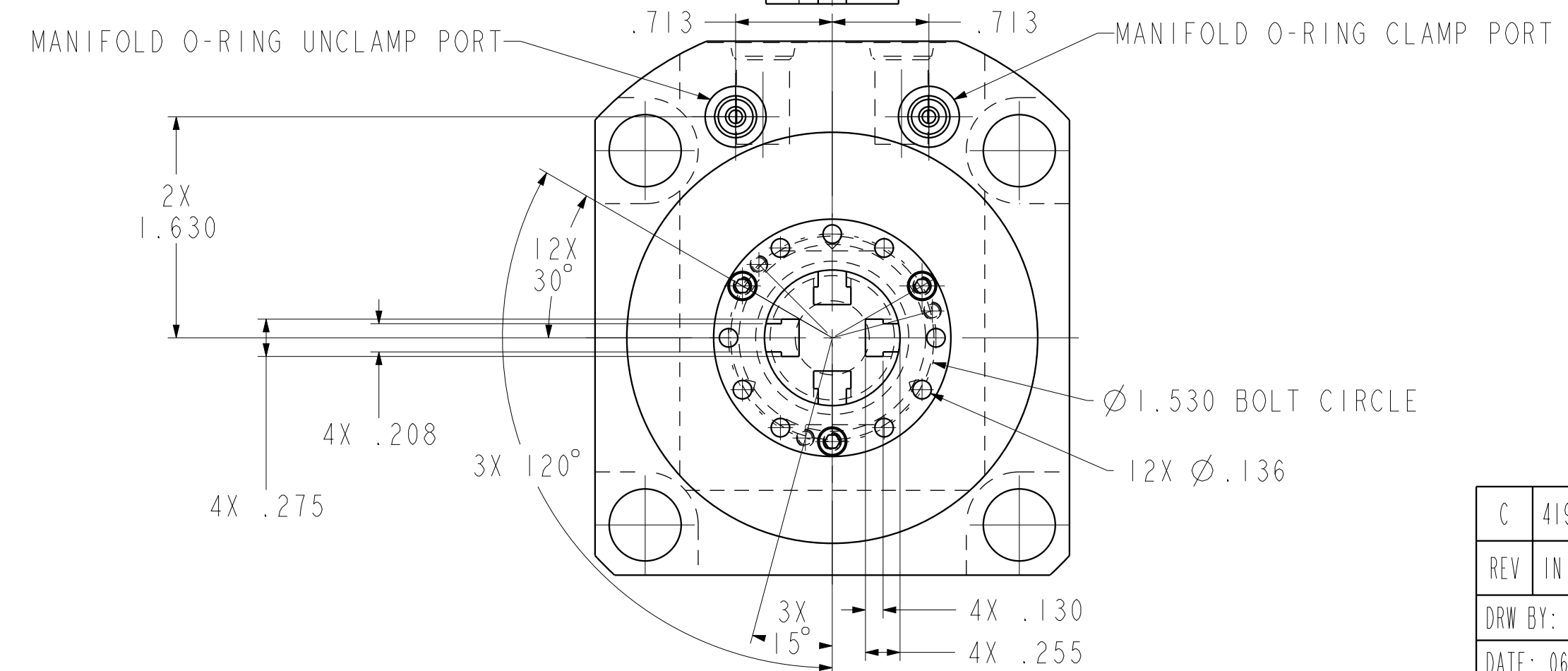
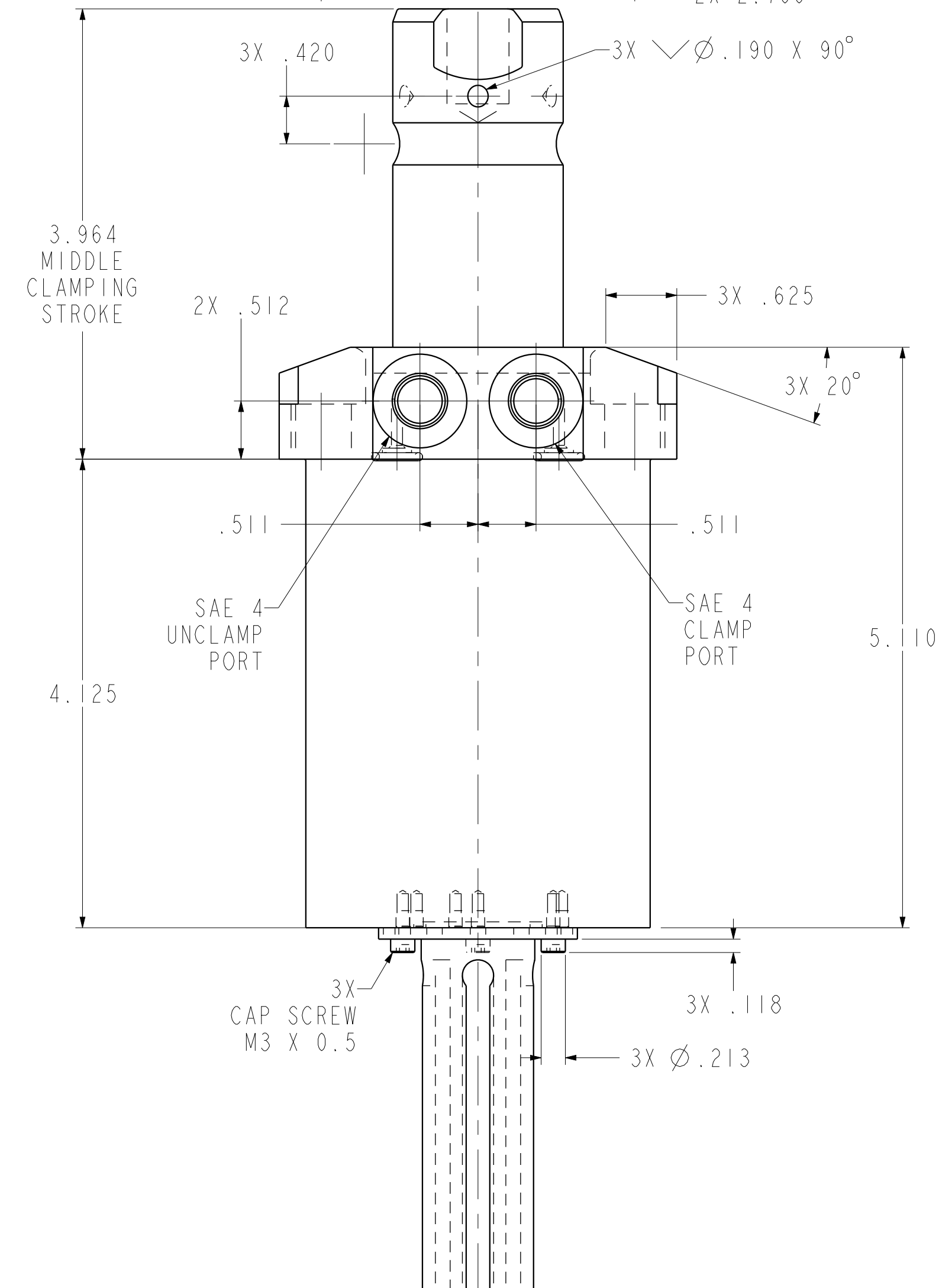
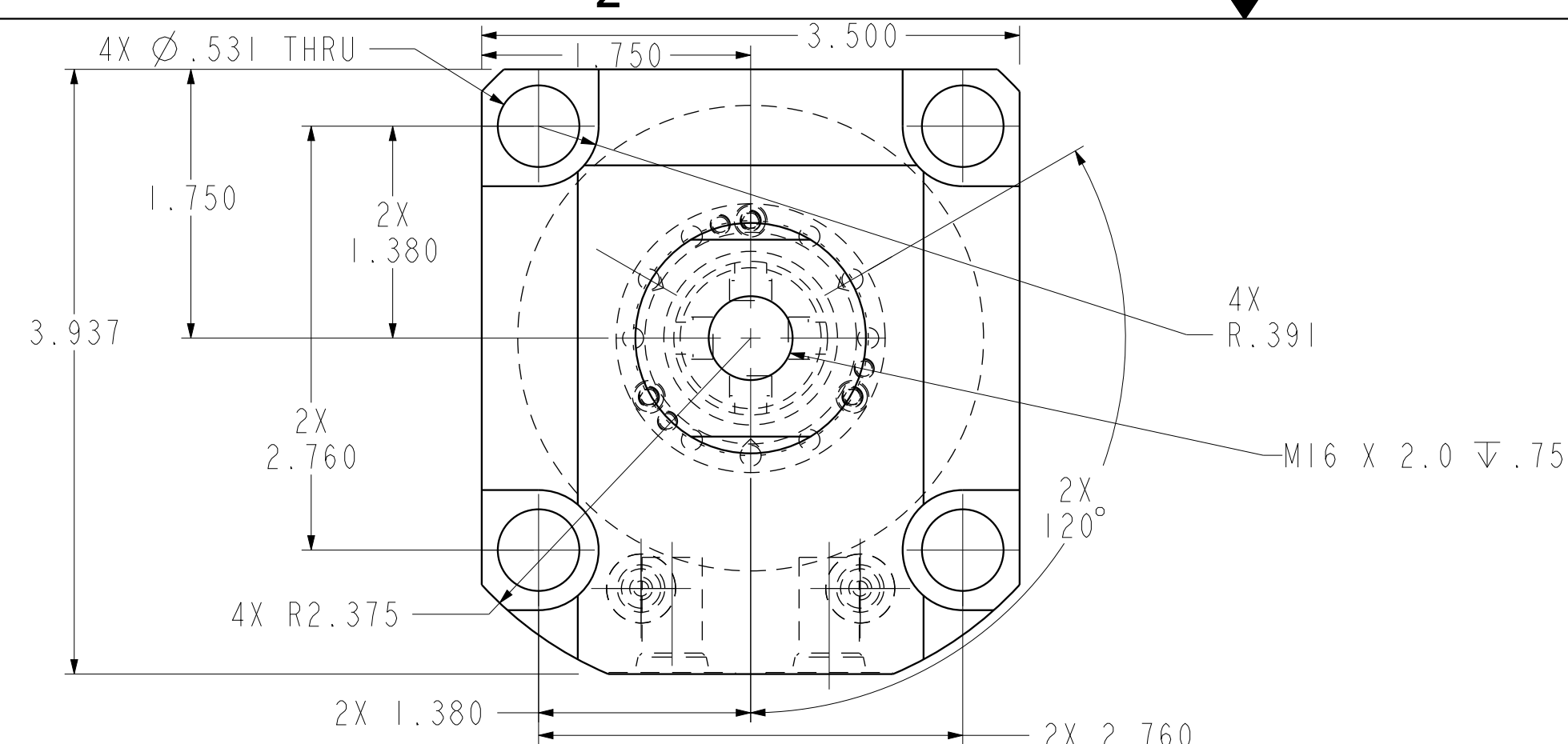


ILCI4062105PS REV C ECN 4191



CAD CONTROL DRAWING			
		VEKTEK, INC. 1334 E. SIXTH AVE. P.O. BOX 625 EMPORIA, KS. 66801 U.S.A.	

C	4191	RELEASE	JDW	05/22/20	14062105PS	A	SC,LP,TF,TC,7500,DA,STR,LS,PS
REV	IN ACCORDANCE WITH ECN	EFFECTIVE DATE	REVISED BY	DATE	REFERENCE MODEL	REF REV	
DRW BY:	JDW	DRAWING STATUS: Released			TOLERANCES DO NOT APPLY		SIZE D
DATE:	06/30/14	PRODUCTION APPROVED FOR RELEASED STATUS ONLY			DIMENSIONS ARE NOMINAL		ILCI4062105PS
							REV C