

1

2

3

4

D

D

C

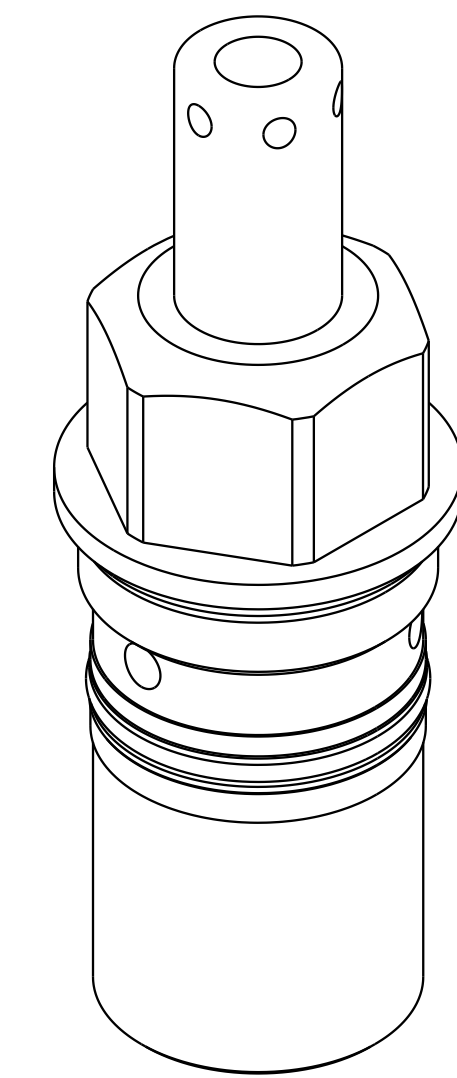
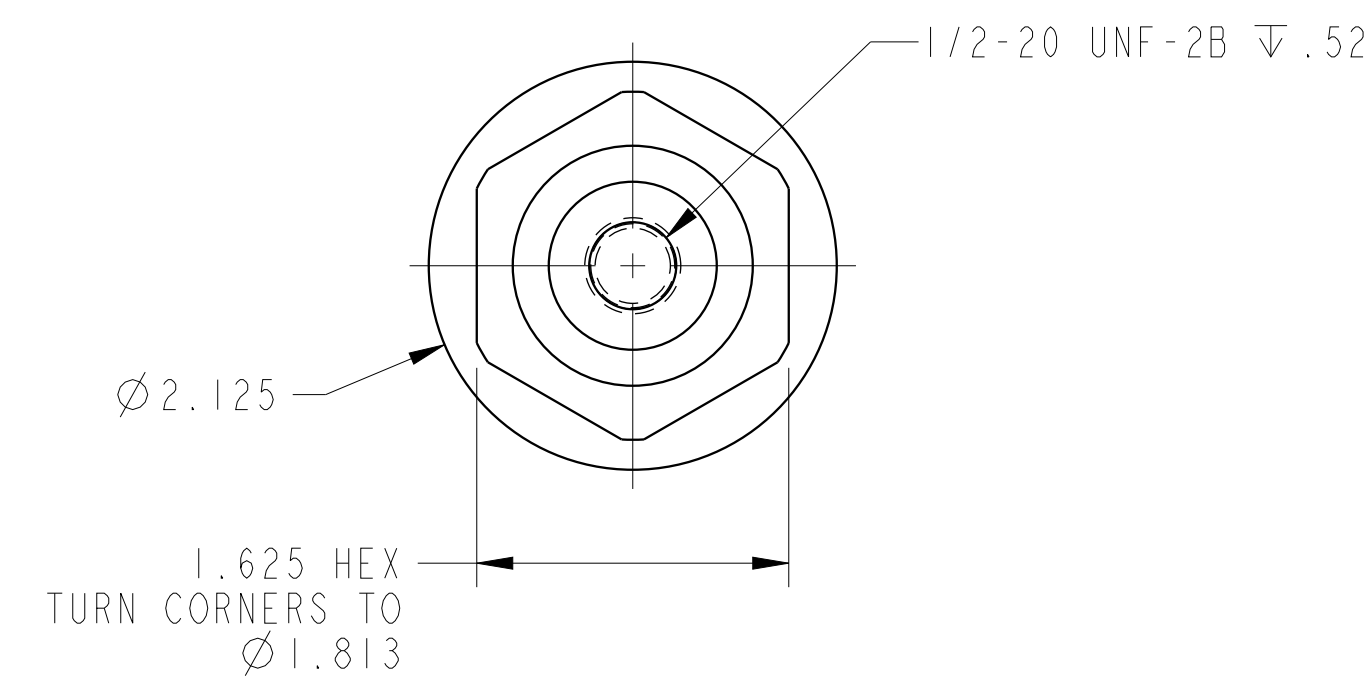
C

B

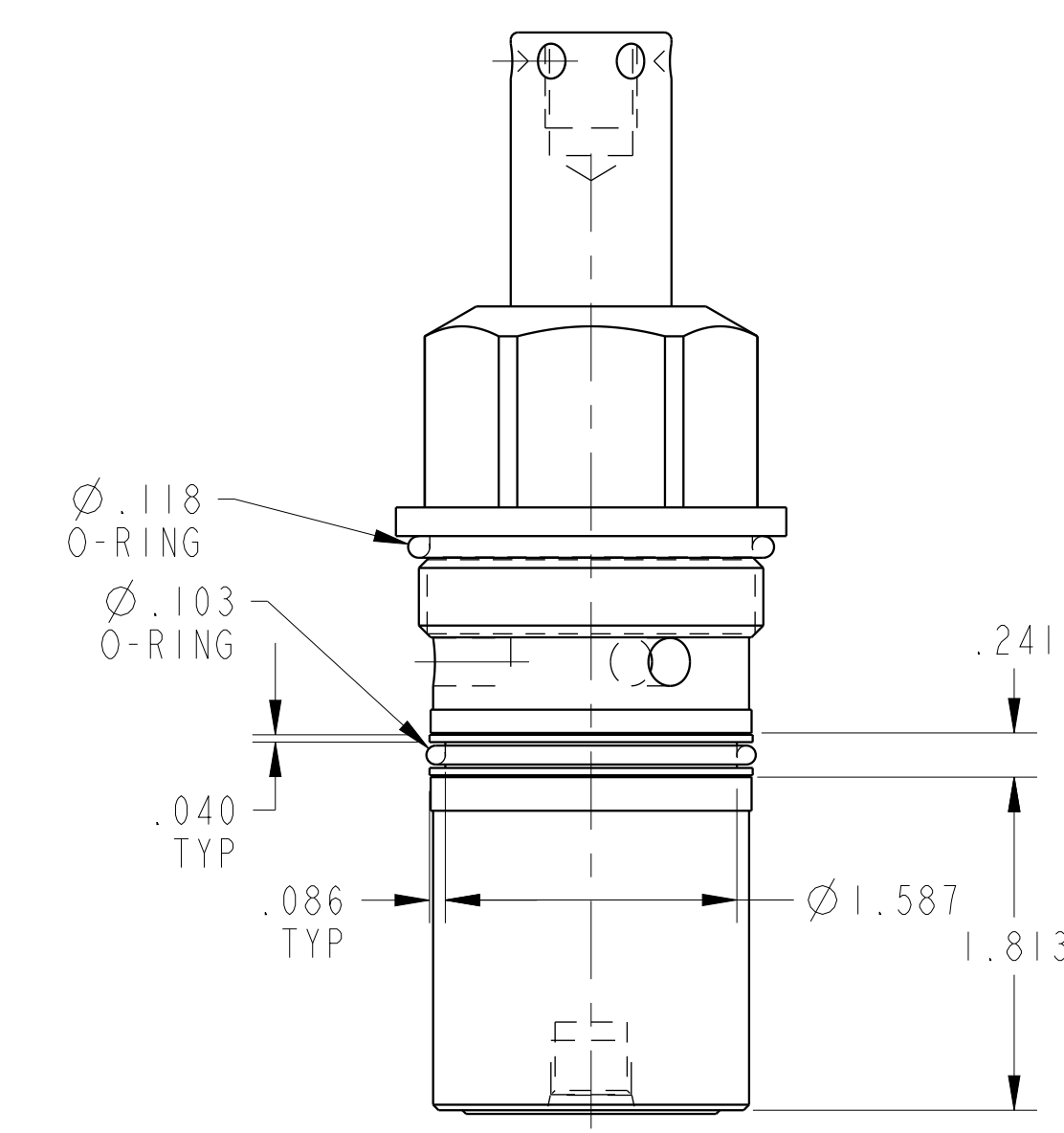
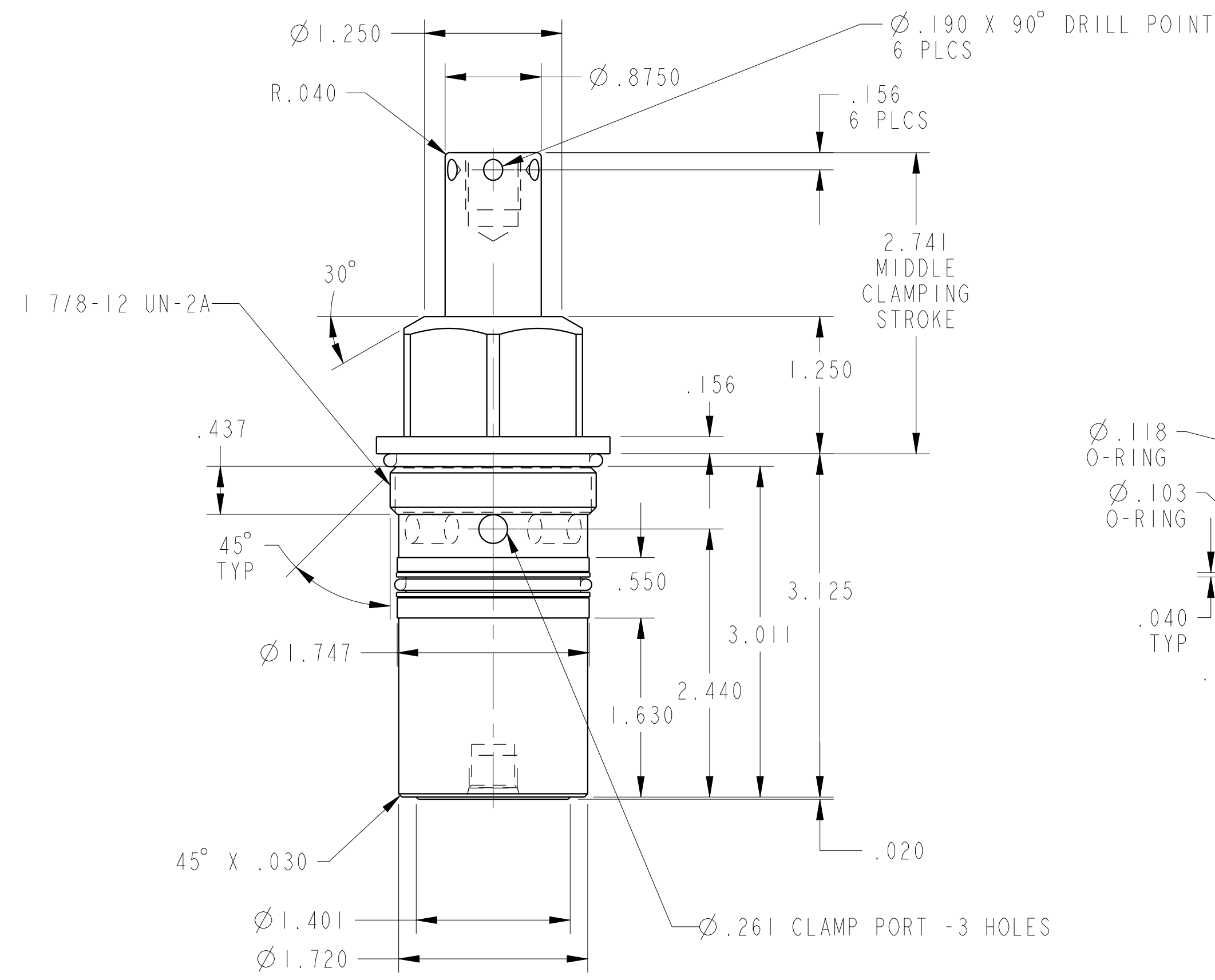
B

A

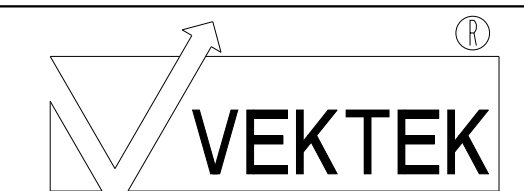
A



ILC14121301L REV E ECN 2510



**CAD CONTROL DRAWING**



VEKTEK, INC.  
1334 E. SIXTH AVE. P.O. BOX 625  
EMPORIA, KS. 66801 U.S.A.

|         |                        |  |            |          |                         |         |                          |
|---------|------------------------|--|------------|----------|-------------------------|---------|--------------------------|
| E       | 2510                   | RELEASED                                     | JDW        | 04/08/13 | 14121301L               | A       | SC, HS, CM, DA, 2600, LH |
| REV     | IN ACCORDANCE WITH ECN | EFFECTIVE DATE                               | REVISED BY | DATE     | REFERENCE MODEL         | REF REV |                          |
| DRW BY: | K. ROEMER              | DRAWING STATUS: <b>Released</b>              |            |          | TOLERANCES DO NOT APPLY |         | SIZE                     |
| DATE:   | 03/28/08               | PRODUCTION APPROVED FOR RELEASED STATUS ONLY |            |          | DIMENSIONS ARE NOMINAL  |         | D                        |

|      |   |     |   |
|------|---|-----|---|
| SIZE | D | REV | E |
|------|---|-----|---|

|       |              |     |   |
|-------|--------------|-----|---|
| SIZE  | D            | REV | E |
| MODEL | ILC14121301L |     |   |

1

2

3

4

SHEET 1 OF 1