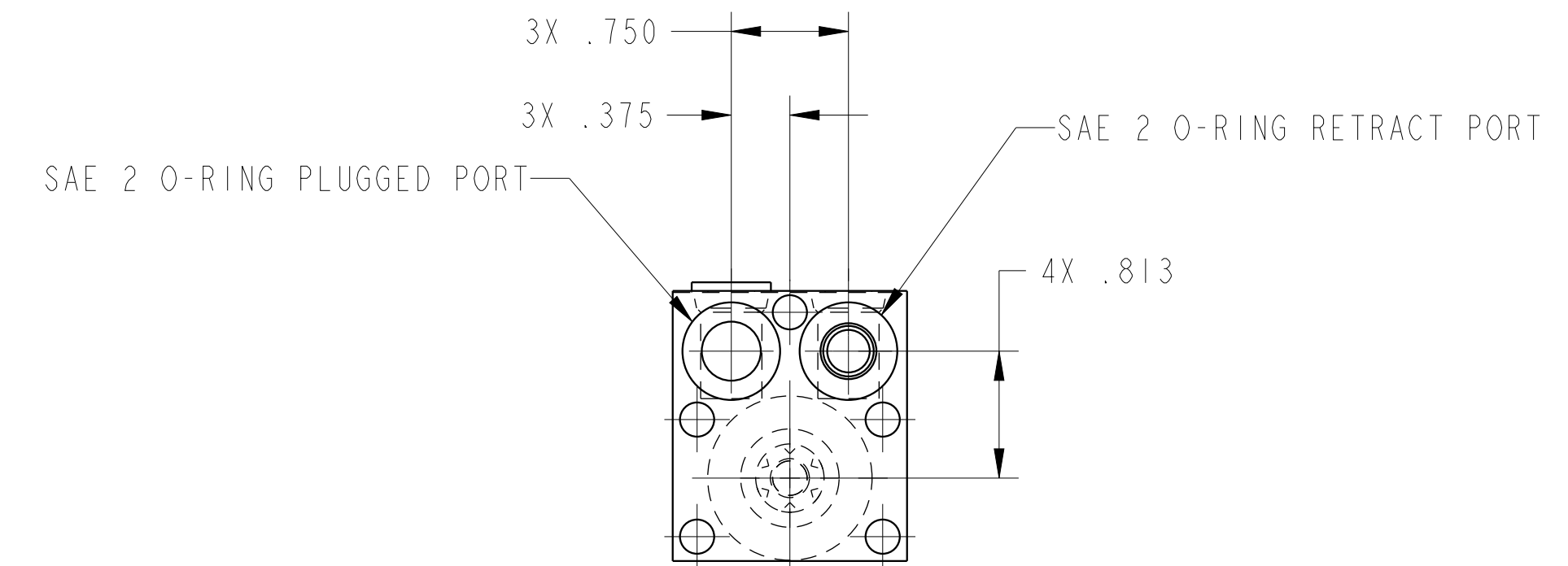
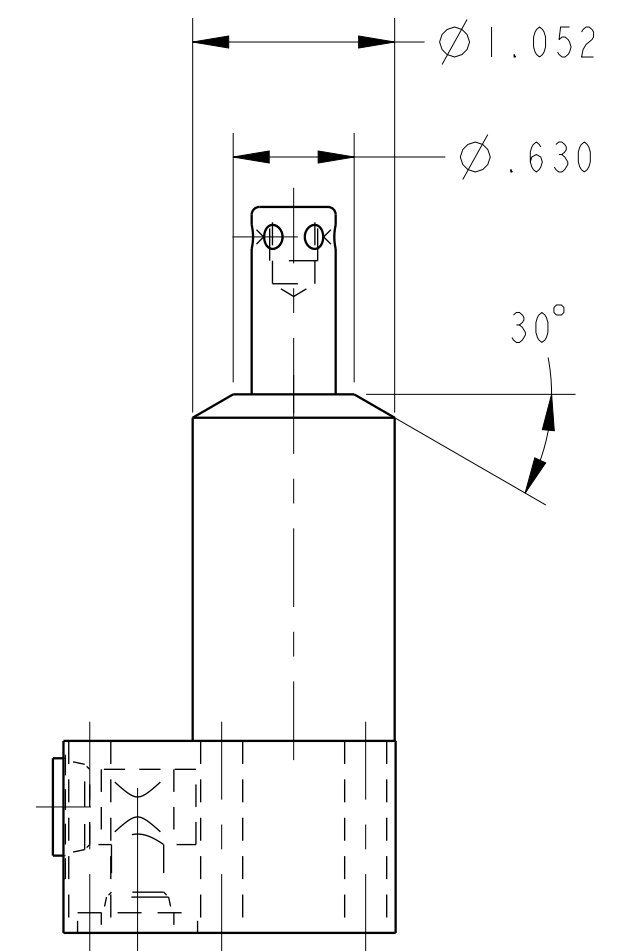
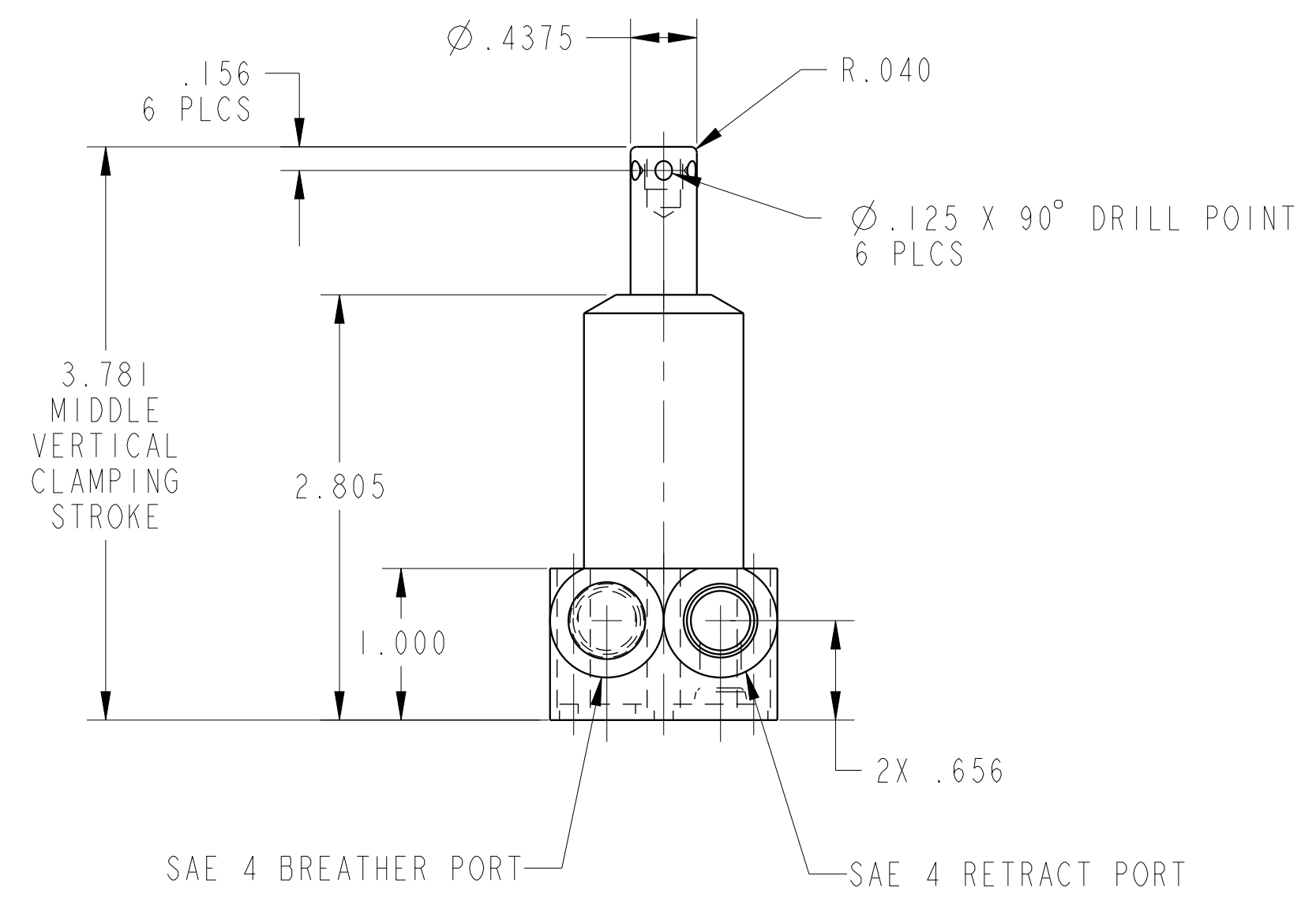

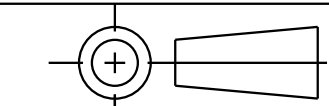


ILC14210501S REV B ECN 3489
SCALE 1.000



CAD CONTROL DRAWING	 VEKTEK, INC. 1334 E. SIXTH AVE. P.O. BOX 625 EMPORIA, KS. 66801 U.S.A.	
		

B	3489	RELEASE	ATHOMSEN	11-JUN-2018	14210501S	A	SC, BF, SA, HS, STR, 450
REV	IN ACCORDANCE WITH ECN	EFFECTIVE DATE	REVISED BY	DATE	REFERENCE MODEL	REF REV	
DRW BY:	DRAWING STATUS: Released			TOLERANCES DO NOT APPLY			
DATE:	PRODUCTION APPROVED FOR RELEASED STATUS ONLY			DIMENSIONS ARE NOMINAL			

SIZE D ILC14210501S REV B
FORM FEG036, Rev. B