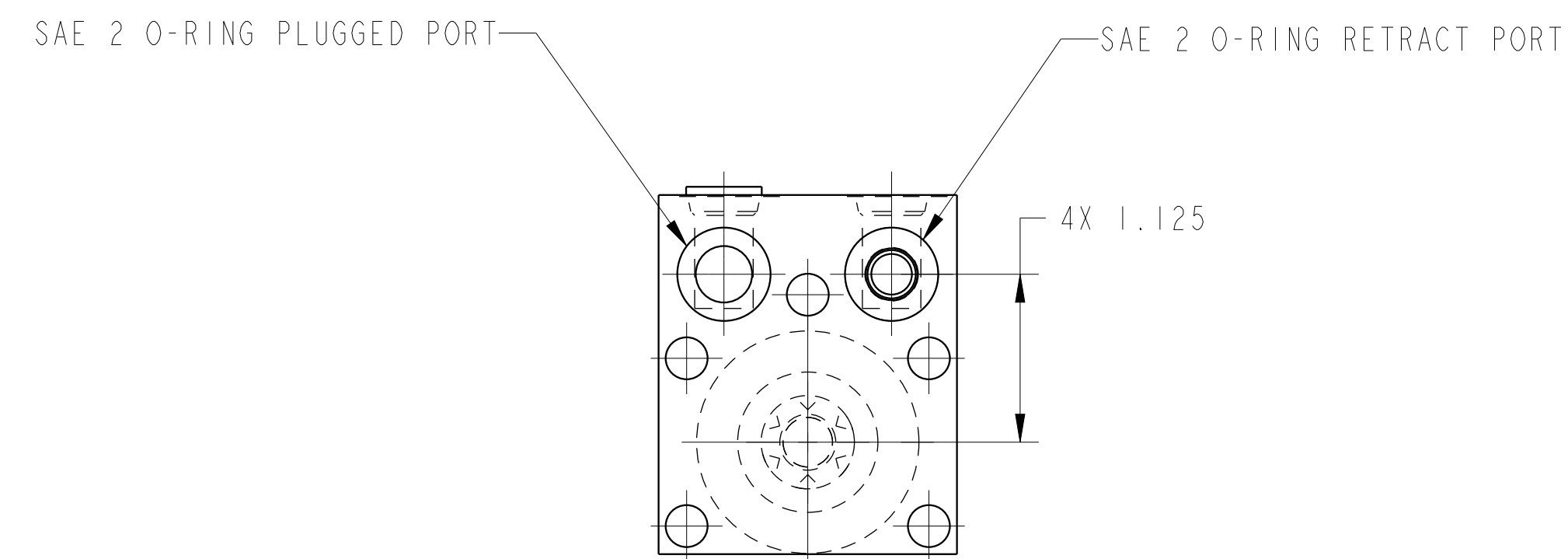
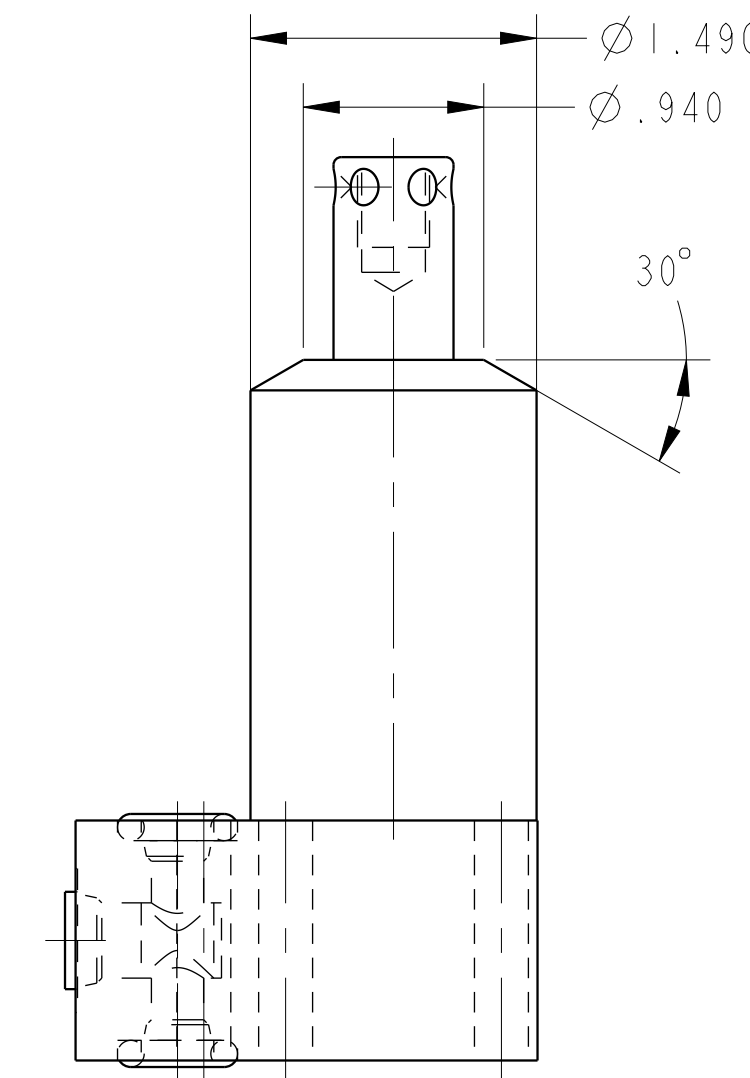
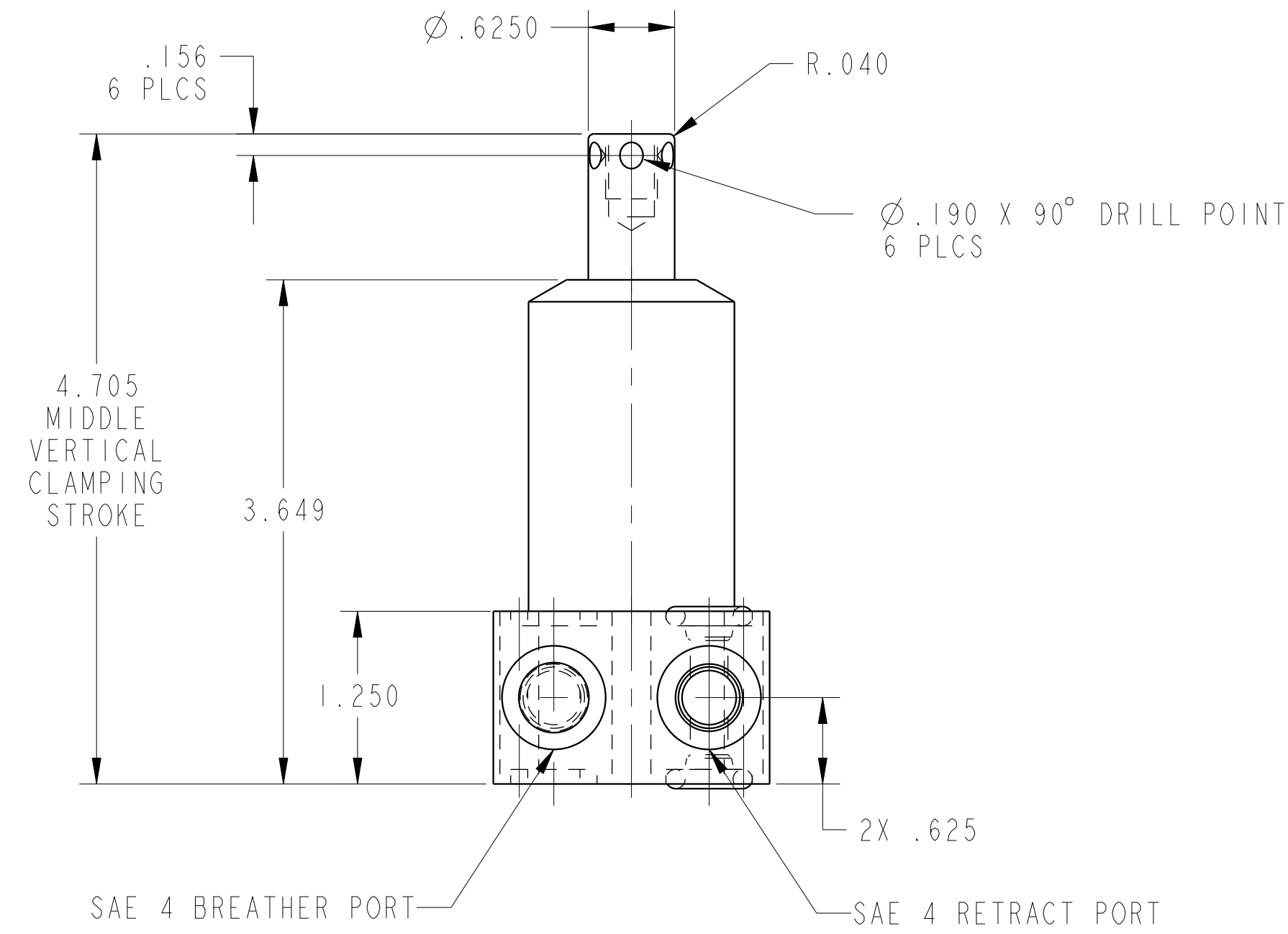
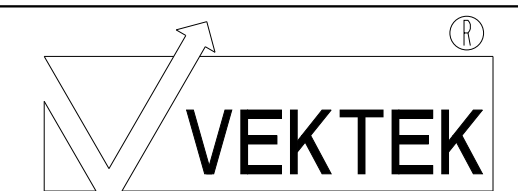


ILC14210901L REV D ECN 3502  
SCALE 1.000



CAD CONTROL  
DRAWING



VEKTEK, INC.  
1334 E. SIXTH AVE. P.O. BOX 625  
EMPORIA, KS. 66801 U.S.A.

D	3502	RELEASE	ATHOMSEN	12-JUN-2018
REV	IN ACCORDANCE WITH ECN	EFFECTIVE DATE	REVISED BY	DATE
DRW BY:	K. ROEMER	DRAWING STATUS: <b>Released</b>		
DATE:	02-09-05	PRODUCTION APPROVED FOR RELEASED STATUS ONLY		

14210901L	C
REFERENCE MODEL	REF REV
TOLERANCES DO NOT APPLY DIMENSIONS ARE NOMINAL	

SC, BF, SA, HS, LH, 1100
SIZE D
ILC14210901L
REV D