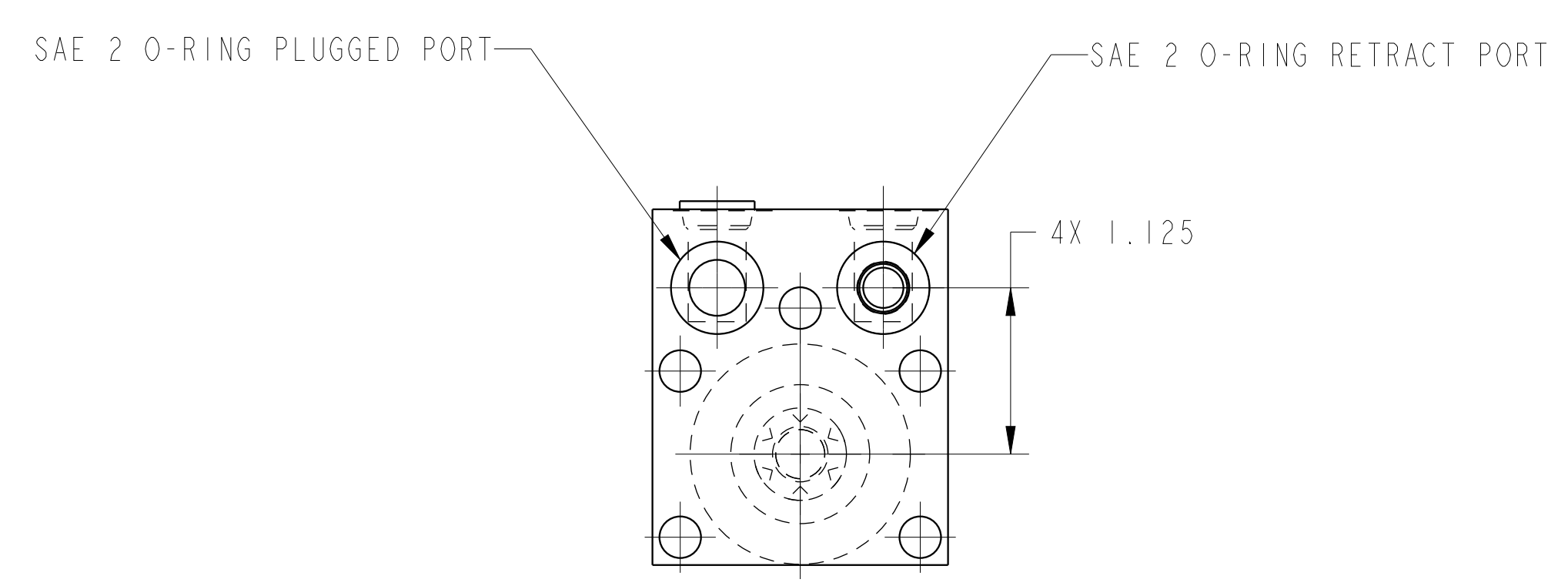
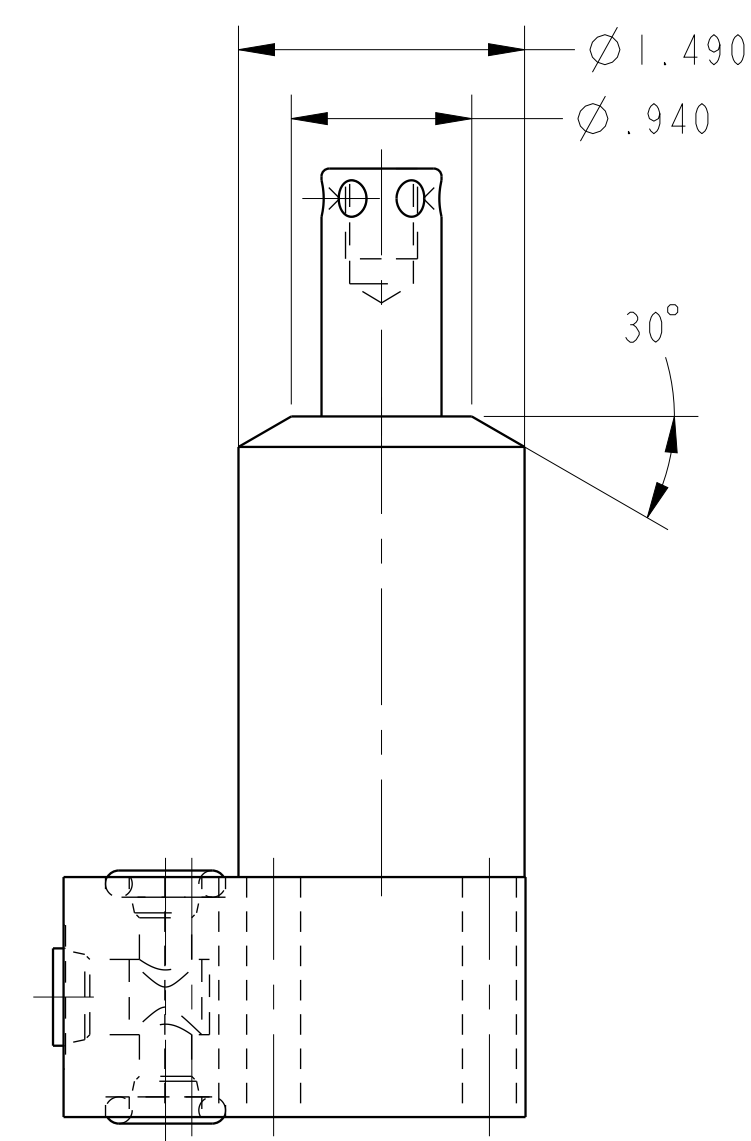
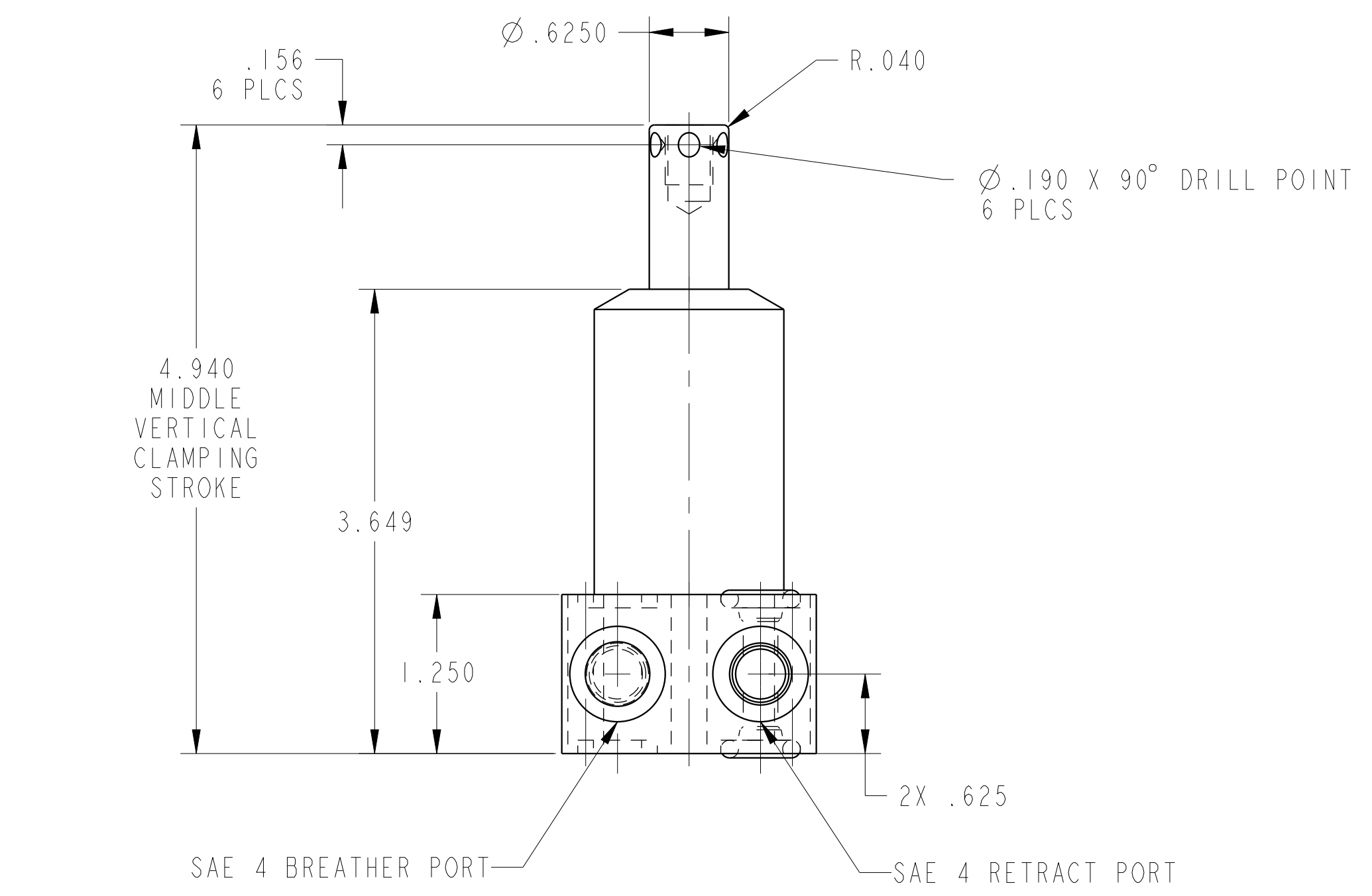


ILC14210901S REV B ECN 3502  
SCALE 1.000



CAD CONTROL DRAWING		
	VEKTEK, INC. 1334 E. SIXTH AVE. P.O. BOX 625 EMPORIA, KS. 66801 U.S.A.	

B	3502	RELEASE	ATHOMSEN	12-JUN-2018
REV	IN ACCORDANCE WITH ECN	EFFECTIVE DATE	REVISED BY	DATE
DRW BY:	JDW	DRAWING STATUS: <b>Released</b>		
DATE:	01/30/18	PRODUCTION APPROVED FOR RELEASED STATUS ONLY		

14210901S	A	SC, BF, SA, HS, STR, 1100
REFERENCE MODEL	REF REV	
TOLERANCES DO NOT APPLY DIMENSIONS ARE NOMINAL		SIZE D
ILC14210901S		REV B