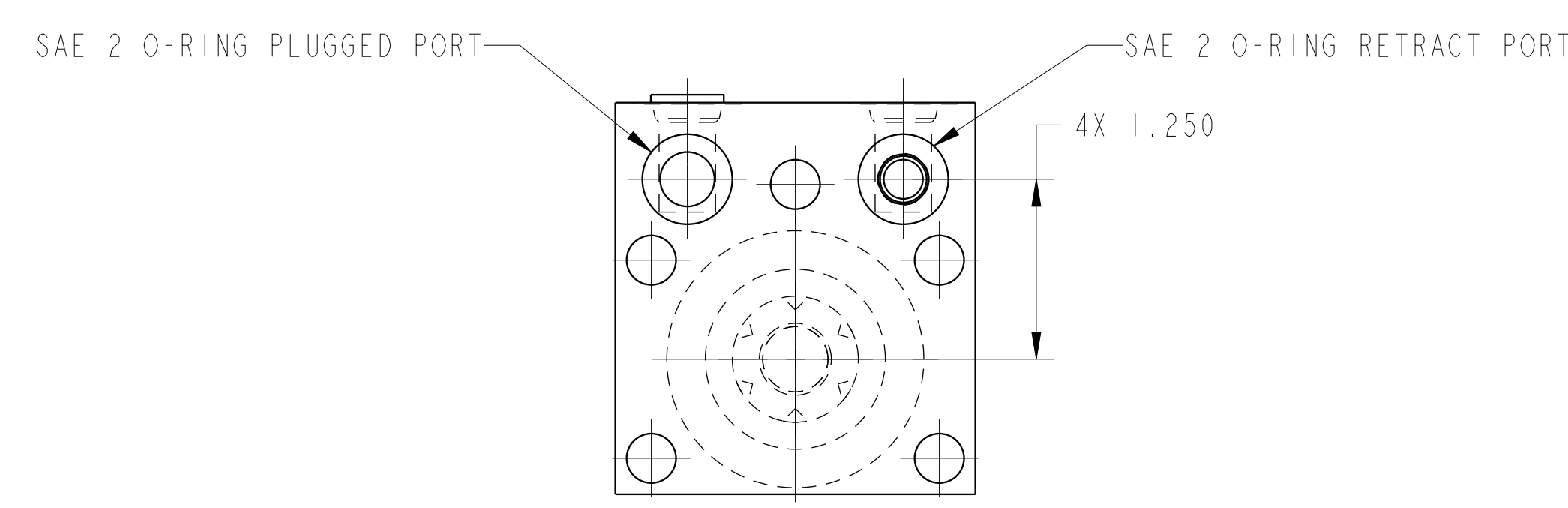
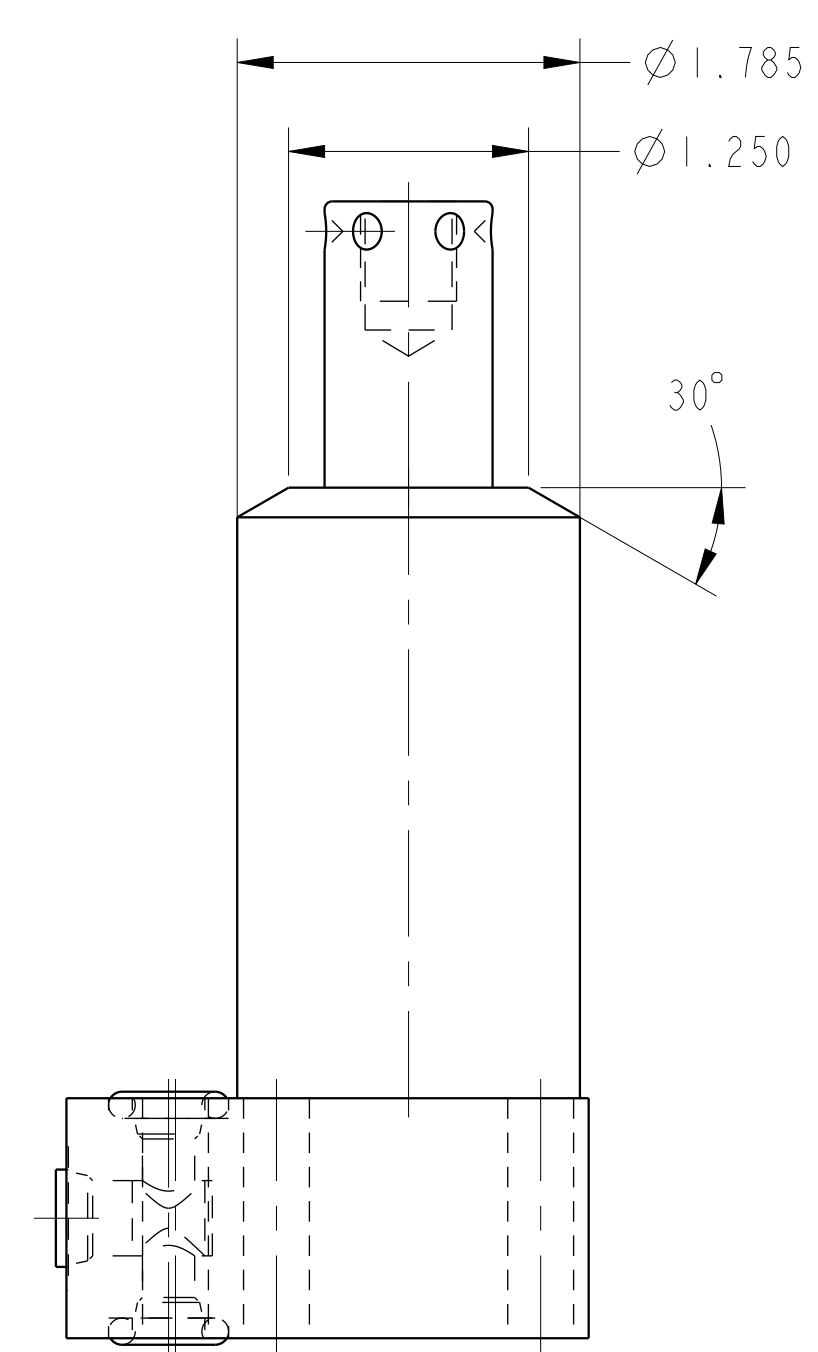
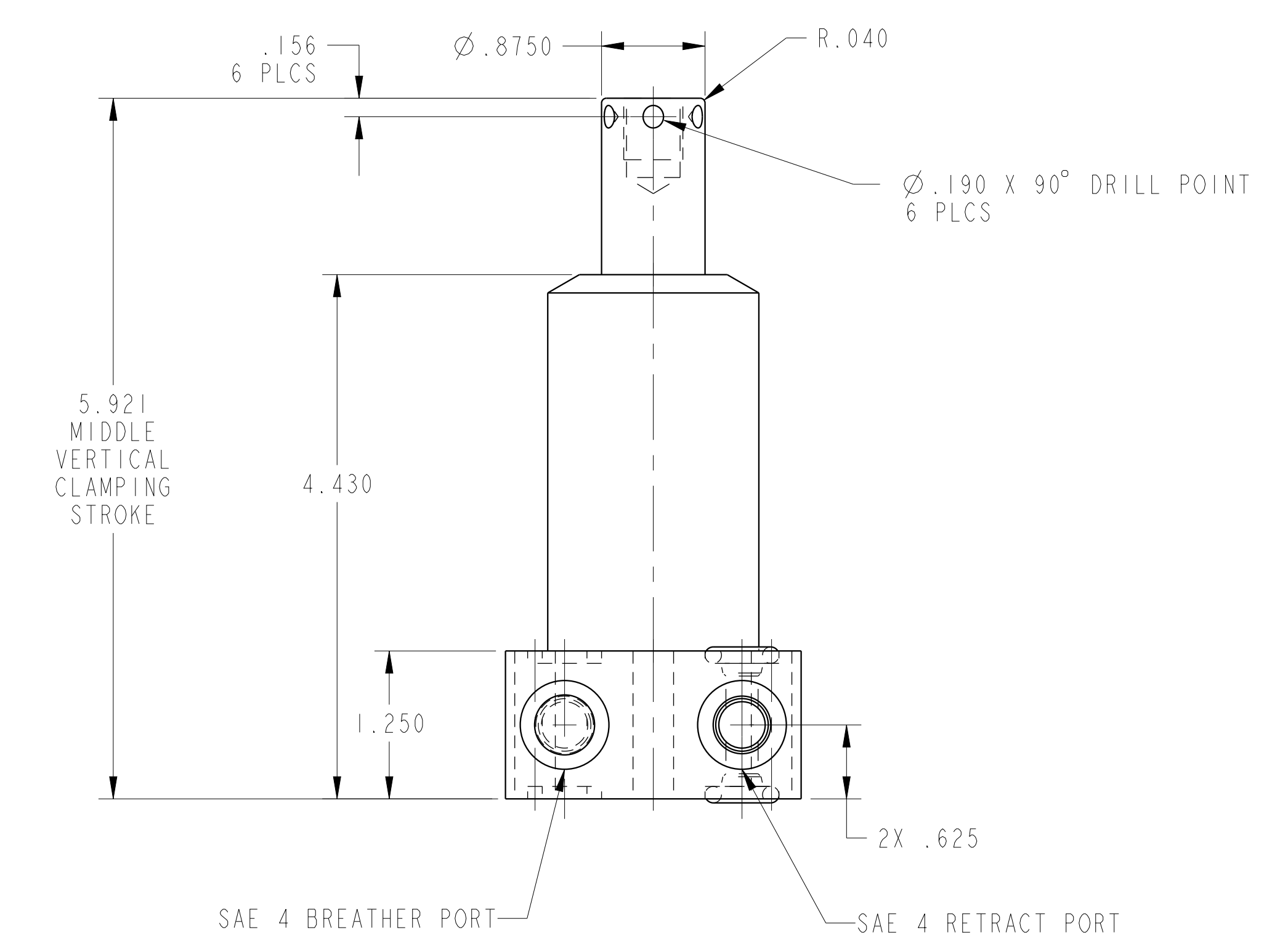



ILC14211301L REV E ECN 3505
SCALE 1.000



CAD CONTROL
DRAWING


VEKTEK, INC.
1334 E. SIXTH AVE. P.O. BOX 625
EMPORIA, KS. 66801 U.S.A.

E	3505	RELEASE	ATHOMSEN	15-JUN-2018	14211301L	C	SC, BF,SA, HS, LH, 2600
REV	IN ACCORDANCE WITH ECN	EFFECTIVE DATE	REVISED BY	DATE	REFERENCE MODEL	REF REV	---
DRW BY: K. ROEMER	DRAWING STATUS: Released				TOLERANCES DO NOT APPLY DIMENSIONS ARE NOMINAL		SIZE D
DATE: 02-09-05	PRODUCTION APPROVED FOR RELEASED STATUS ONLY				ILC14211301L		REV E