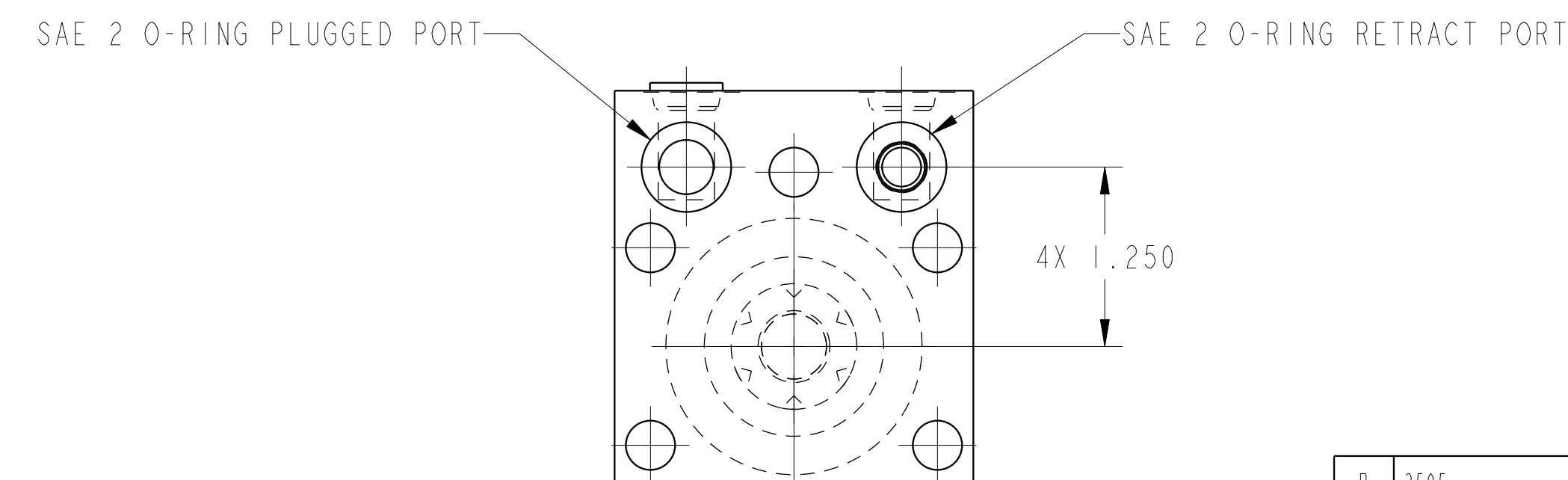
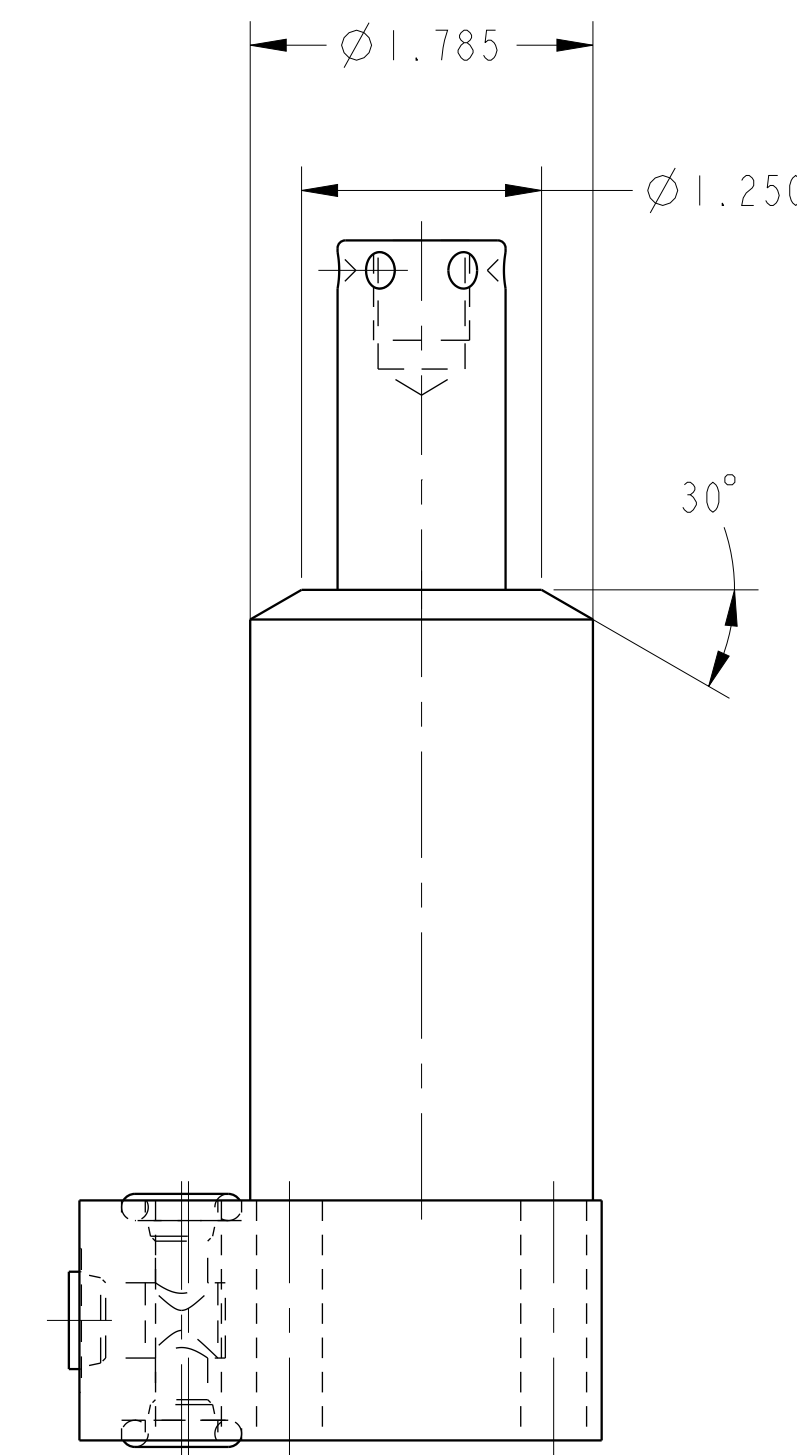
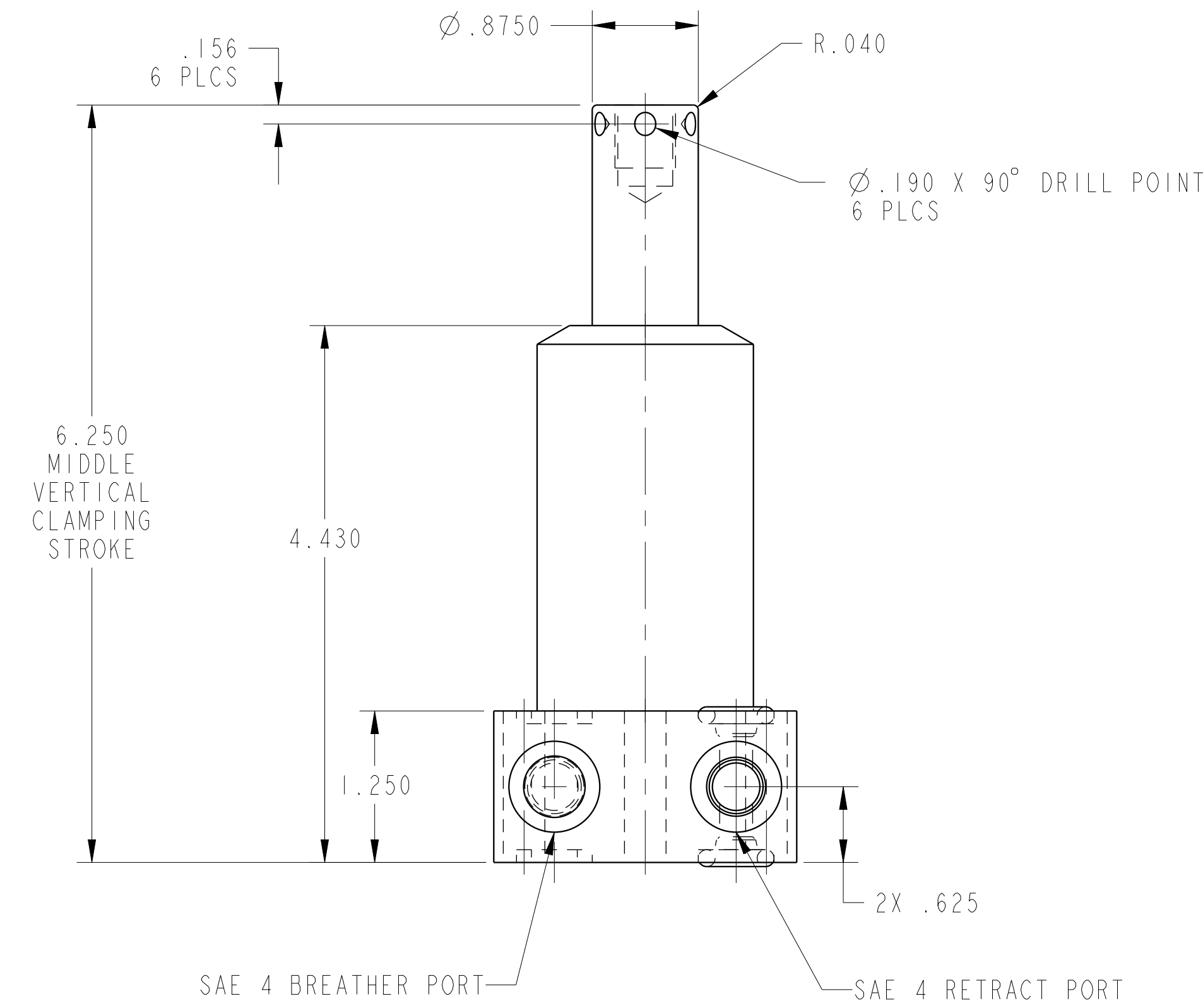
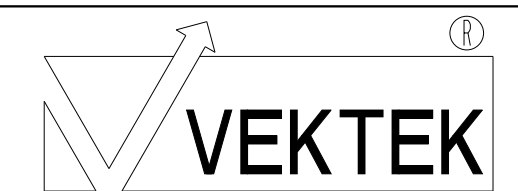


ILC14211301S REV B ECN 3505

SCALE 1.000



CAD CONTROL DRAWING



VEKTEK, INC.  
1334 E. SIXTH AVE. P.O. BOX 625  
EMPORIA, KS. 66801 U.S.A.

B	3505	RELEASE	ATHOMSEN	15-JUN-2018
REV	IN ACCORDANCE WITH ECN	EFFECTIVE DATE	REVISED BY	DATE
DRW BY:	DRAWING STATUS: <b>Released</b>			
DATE:	PRODUCTION APPROVED FOR RELEASED STATUS ONLY			

14211301S	A
REFERENCE MODEL	REF REV
TOLERANCES DO NOT APPLY DIMENSIONS ARE NOMINAL	

SC, BF, SA, HS, STR, 2600	SIZE D	ILC14211301S	REV B
---------------------------	--------	--------------	-------