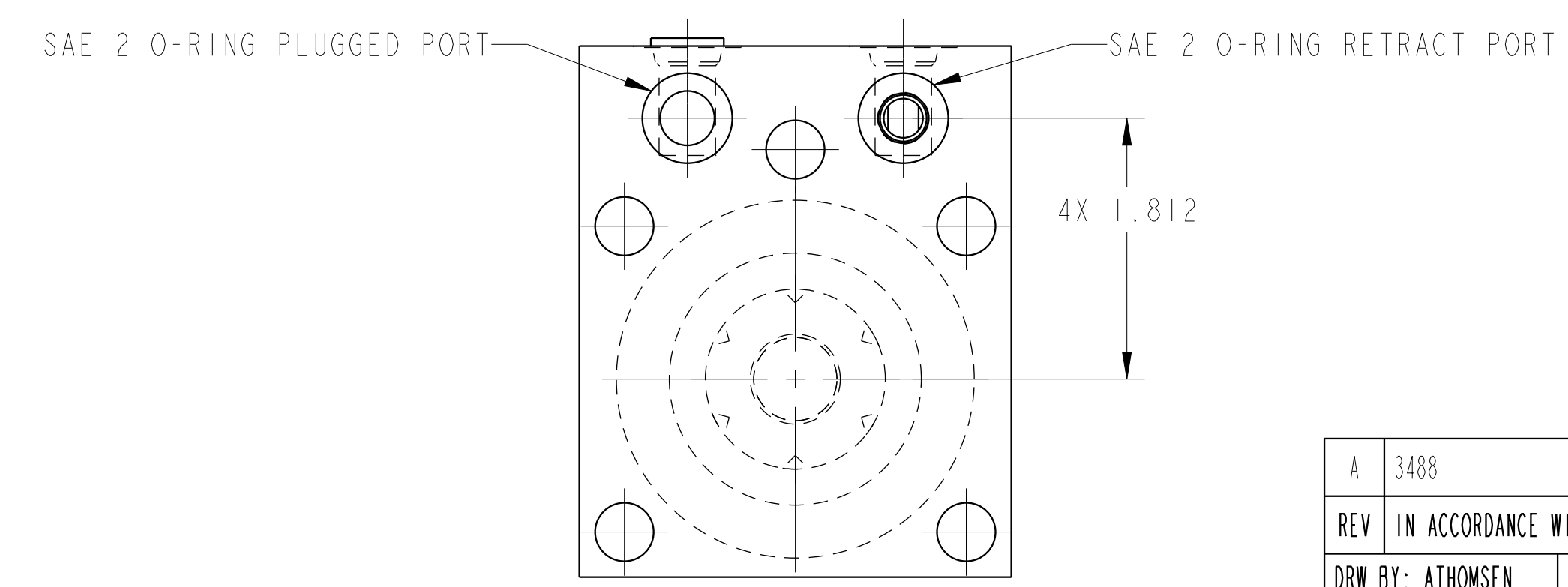



ILC14211803L REV A ECN 3488



CAD CONTROL DRAWING



VEKTEK, INC.
1334 E. SIXTH AVE. P.O. BOX 625
EMPORIA, KS. 66801 U.S.A.

A	3488	RELEASE	ATHOMSEN	20-JUN-2018
REV	IN ACCORDANCE WITH ECN	EFFECTIVE DATE	REVISED BY	DATE
DRW BY:	ATHOMSEN	DRAWING STATUS: Released		
DATE:	20-JUN-2018	PRODUCTION APPROVED FOR RELEASED STATUS ONLY		

14211803L	A	SC, HS, BF, 5000, SA, LH
REFERENCE MODEL	REF REV	
TOLERANCES DO NOT APPLY DIMENSIONS ARE NOMINAL		SIZE D
ILC14211803L		REV A