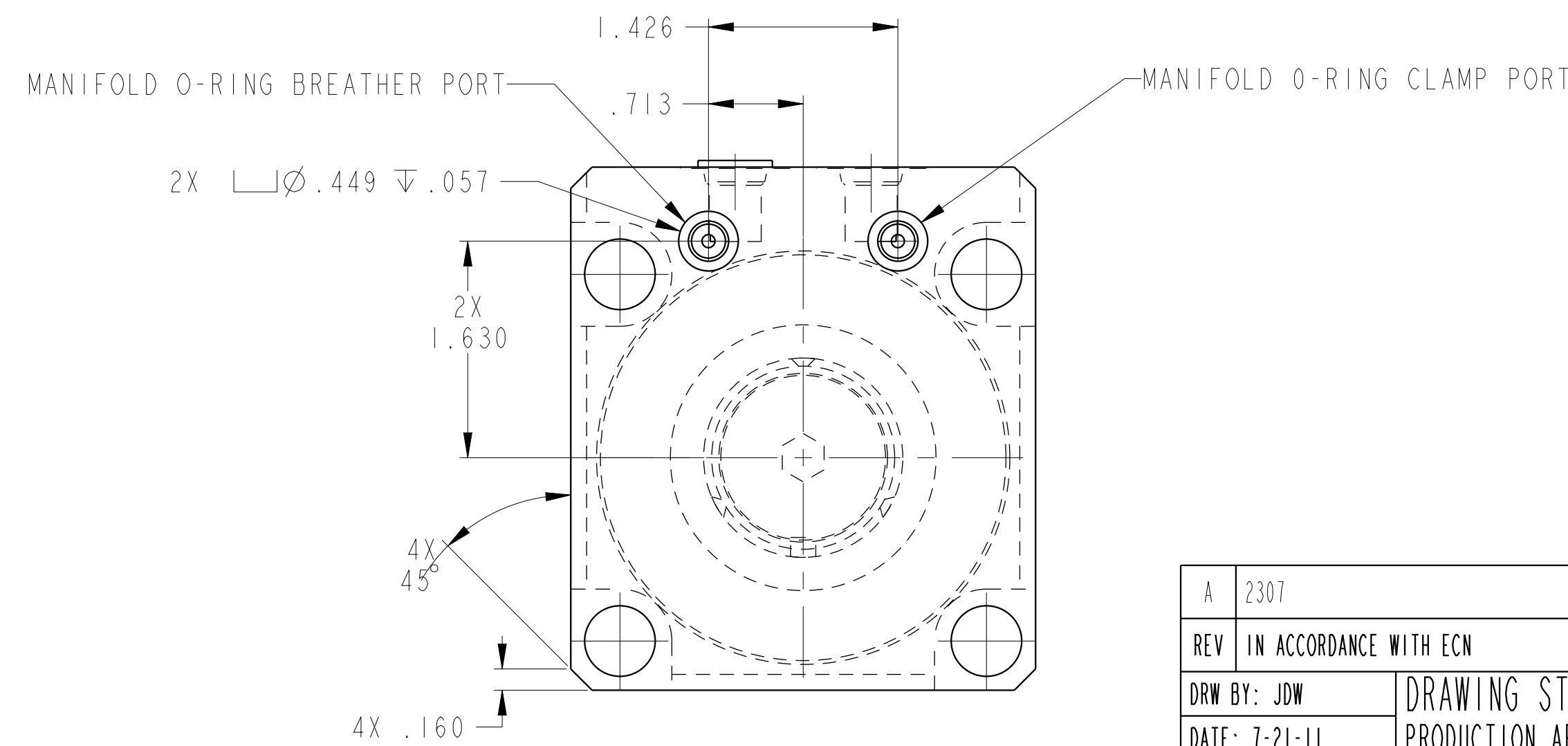
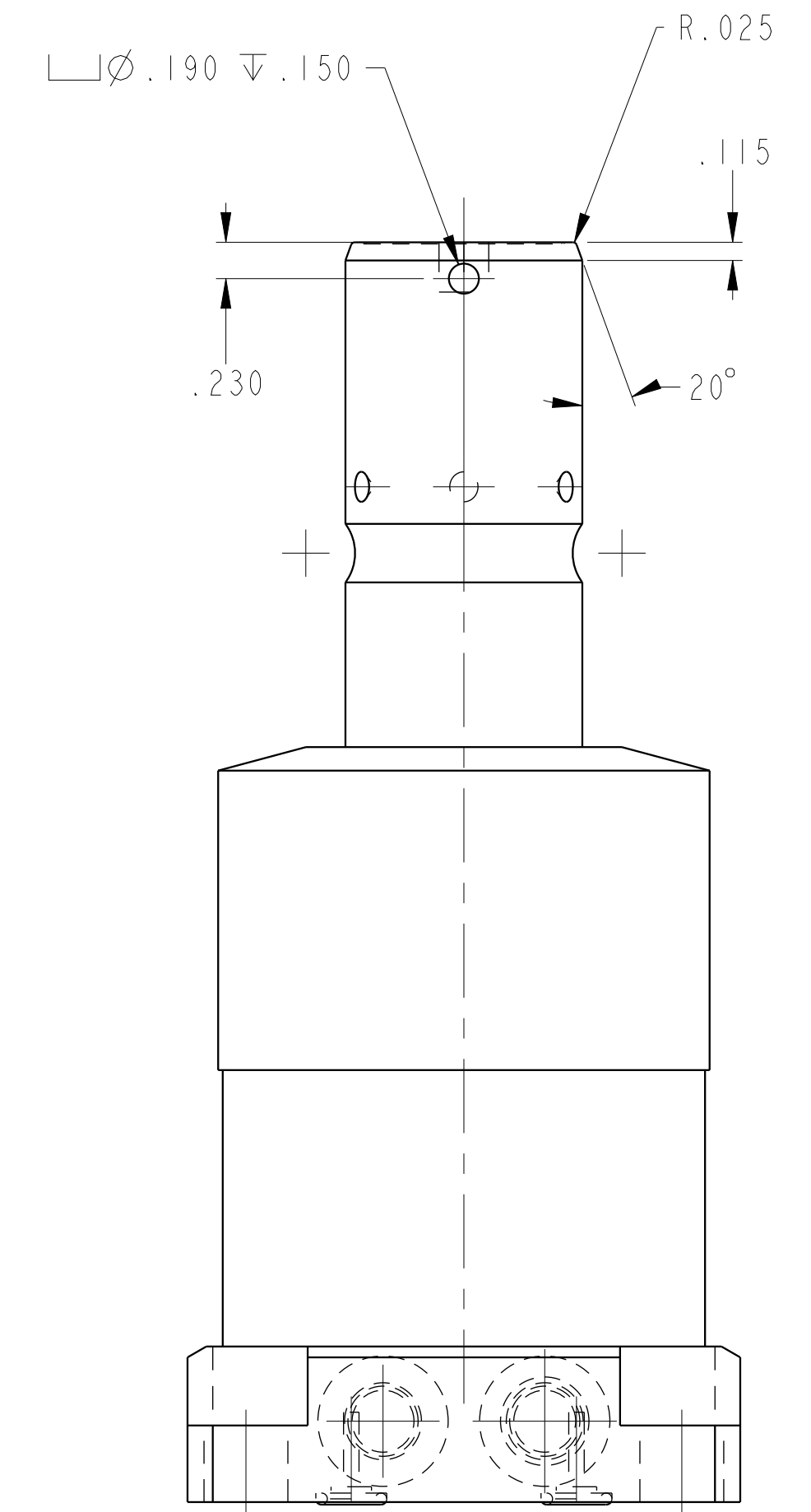
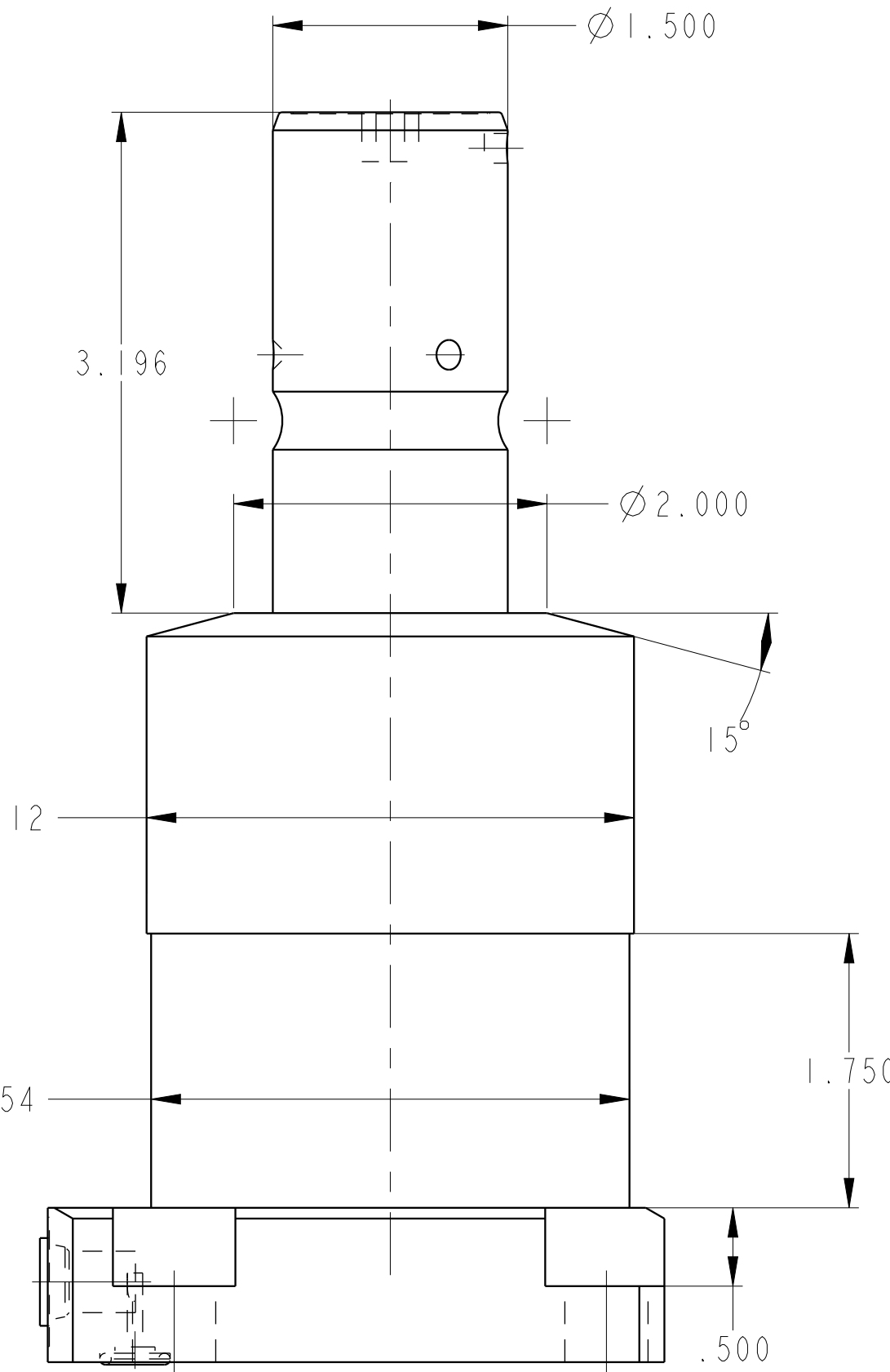
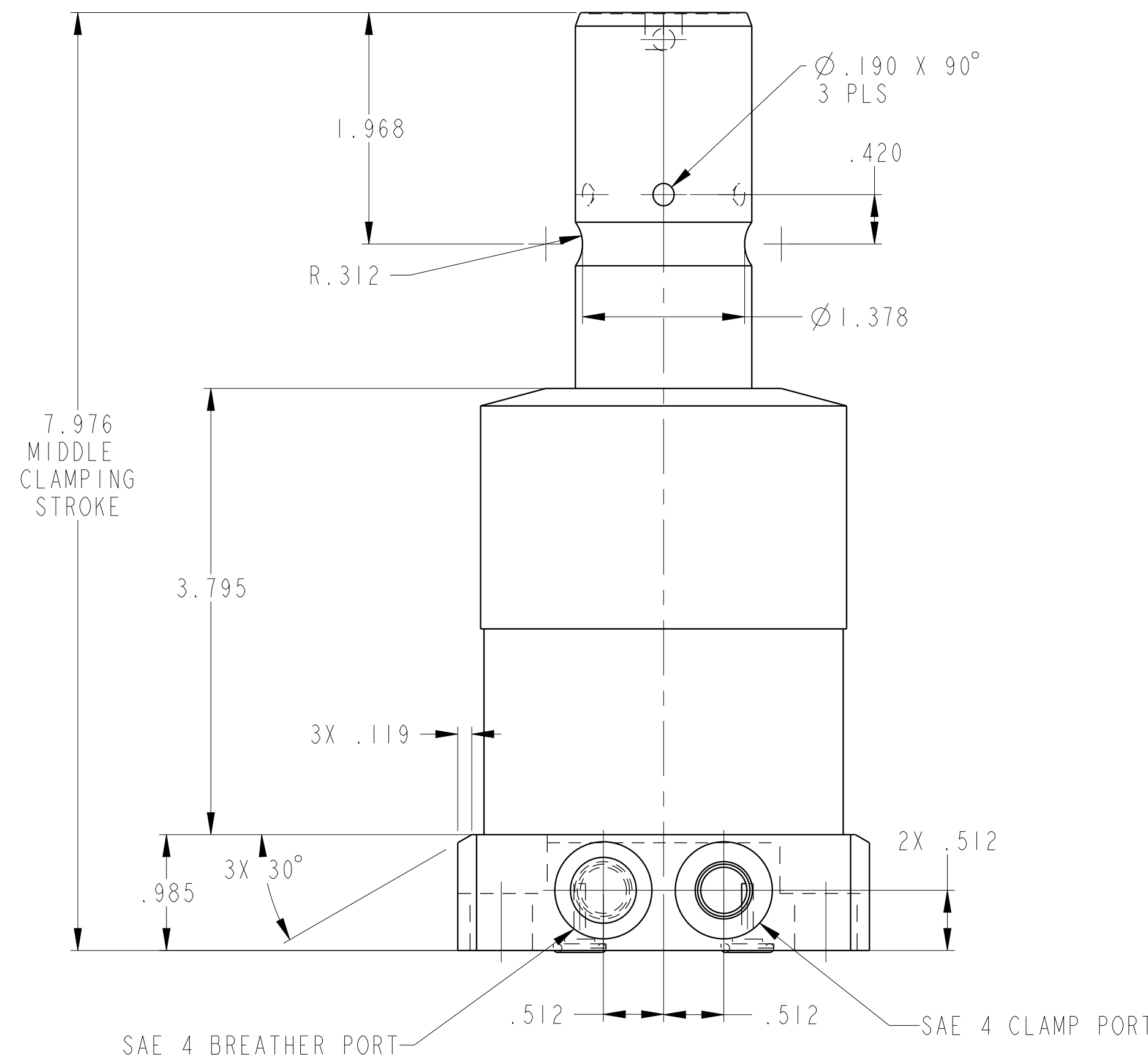
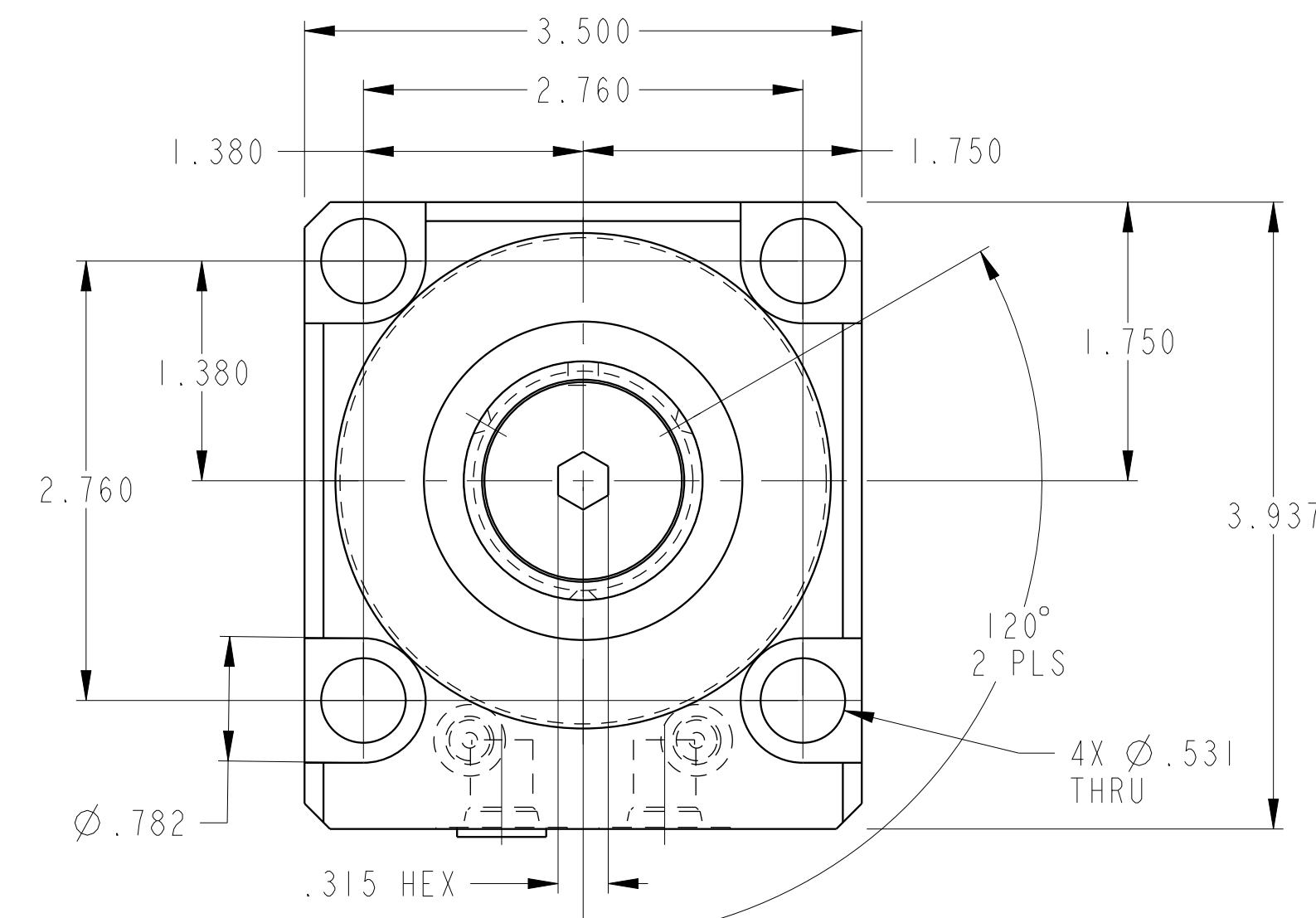
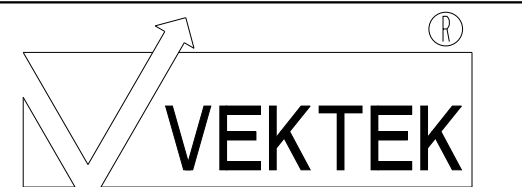


ILC14212100 REV A ECN 2307

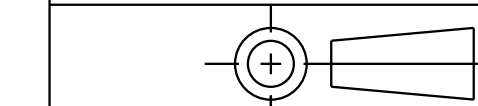


CAD CONTROL DRAWING



VEKTEK, INC.  
1334 E. SIXTH AVE. P.O. BOX 625  
EMPORIA, KS. 66801 U.S.A.

A	2307	RELEASE	JDW	7-21-11
REV	IN ACCORDANCE WITH ECN	EFFECTIVE DATE	REVISED BY	DATE
DRW BY:	JDW	DRAWING STATUS: <b>Released</b>		
DATE:	7-21-11	PRODUCTION APPROVED FOR RELEASED STATUS ONLY		



TOLERANCES DO NOT APPLY  
DIMENSIONS ARE NOMINAL

SIZE D ILC14212100 REV A

FORM FEG036, Rev. B